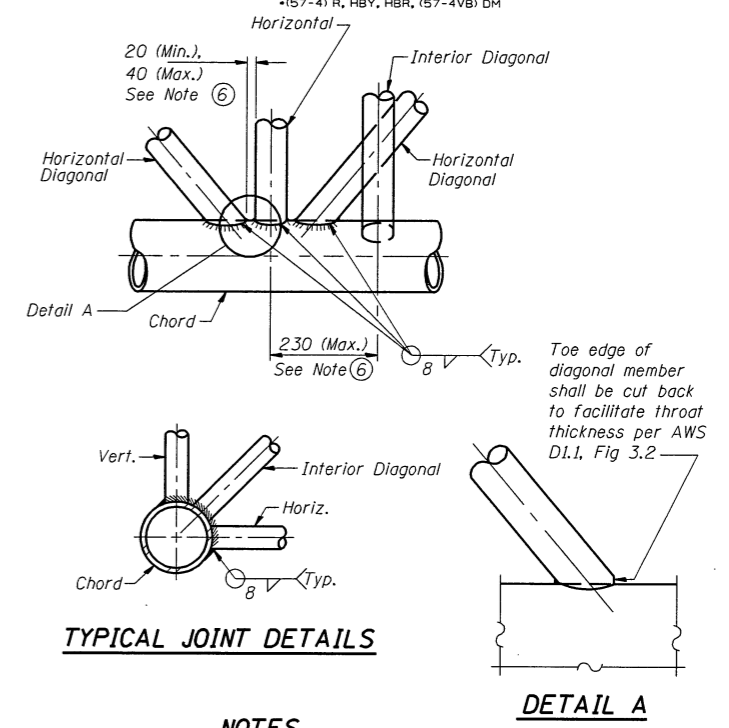
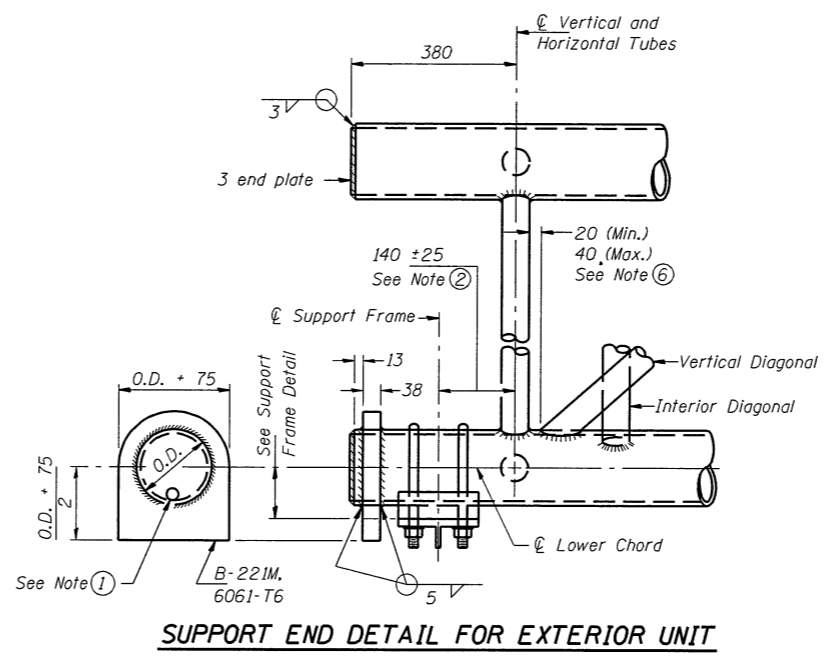
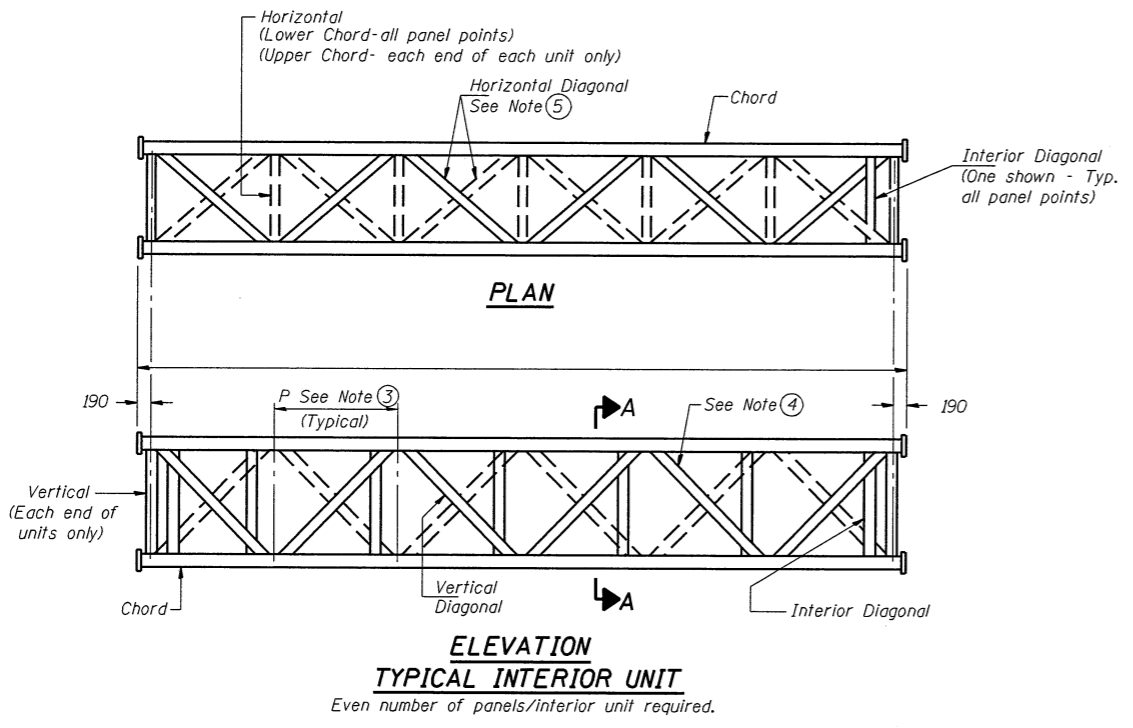
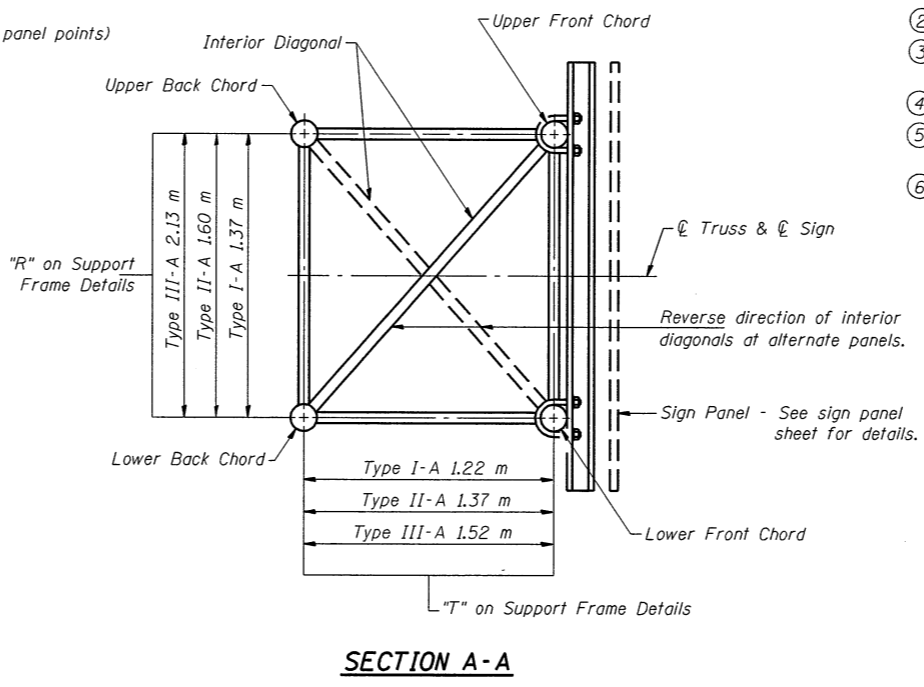
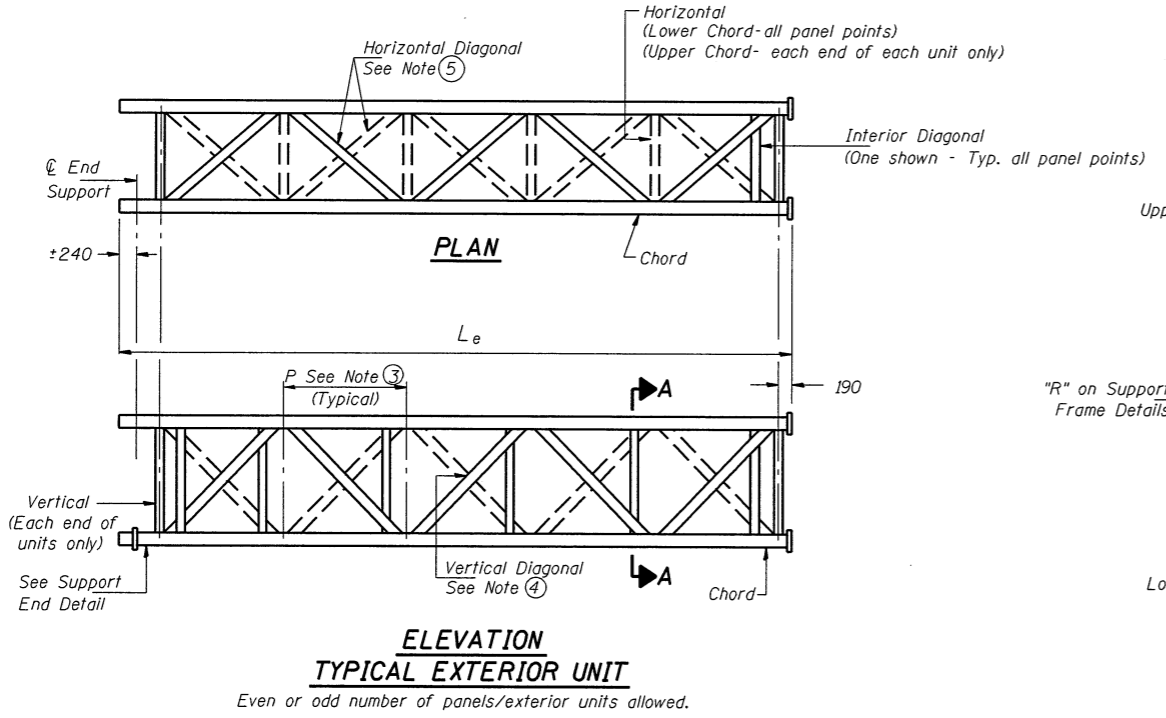


Contract No. 70757  
+157-4) R, HBY, HBR, (57-4VB) DM



**NOTES**

- Contractor may alternatively use standard aluminum drive-fit cap to close end. 13 mm  $\phi$  drain hole in end plate/drive-fit cap. (Typ. at ends of all chords)
- 140 mm end dimension may vary by  $\pm 25$  mm to provide uniform panel spacing (P).
- Panel spacing (P) shall be uniform for entire truss and between 1.20 m and 1.50 m for Type I-A or 1.20 m and 1.65 m for Types II-A and III-A.
- Vertical Diagonals in front and back face shall alternate.
- Hidden lines show wind bracing alternates direction between planes of top and bottom chords.
- All diagonals shall be detailed for minimum offset from the panel point based on the following: Offset shall be such as to provide a 20 mm minimum to 40 mm maximum clearance between any diagonal and any horizontal or vertical member, and to provide clearance for U-bolt connections of signs or walkway brackets.



NUMBER	REVISION	DATE

SHEET TITLE <b>OVERHEAD SIGN STRUCTURE ALUMINUM TRUSS DETAILS FOR TRUSS TYPES I-A, II-A AND III-A</b>	
PROJECT F.A.I. 55 SECTION (57-4)R, HBY, HBR, (57-4VB)DM McLEAN COUNTY	PROJECT NO. 9450 SCALE DATE 10/08/04 DRAWN BY TFG CHECKED BY MCB DRAWING NO. 3
<b>COOMBE-BLOXDORF P.C.</b> Engineers/Land Surveyors Springfield, Illinois Design Firm License No. 184-002703	
OF 24 SHTS	