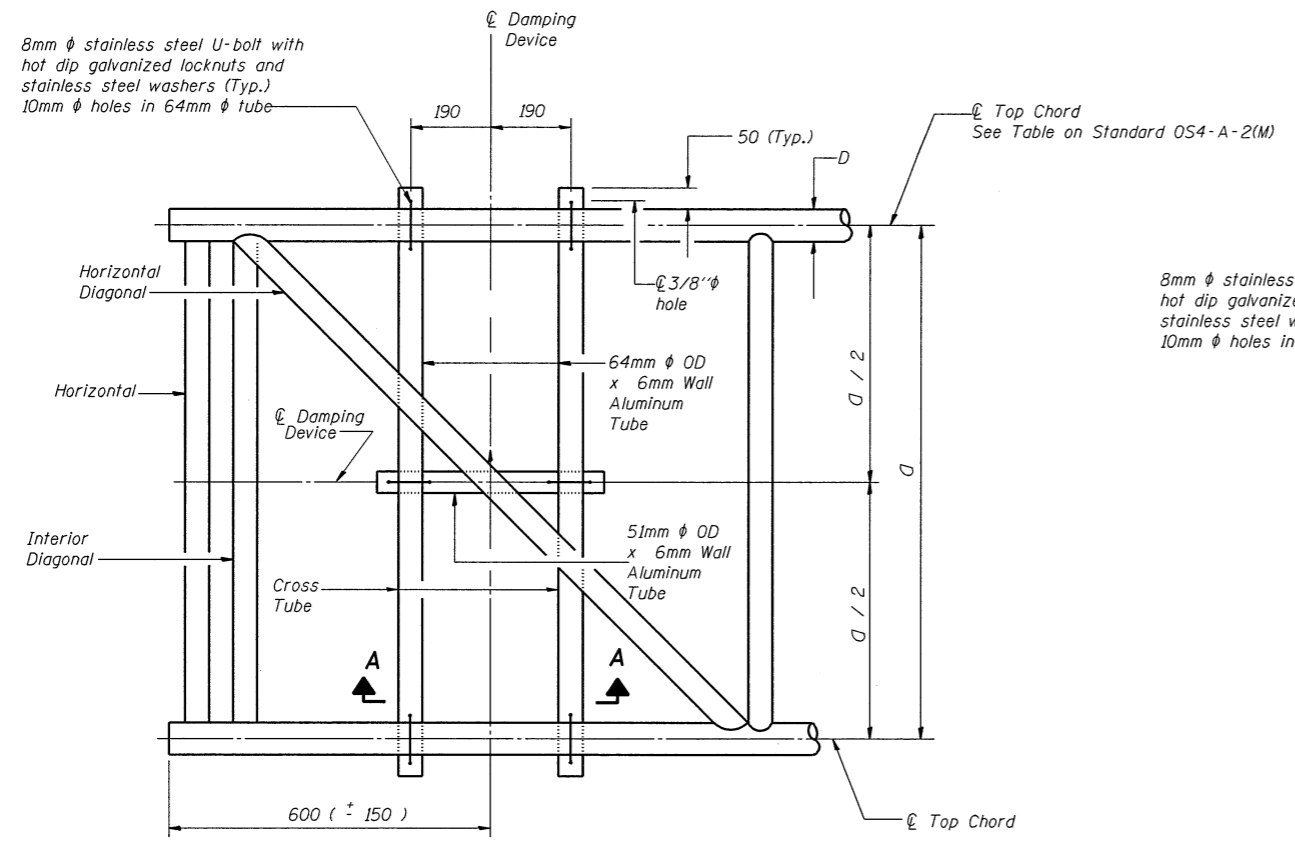
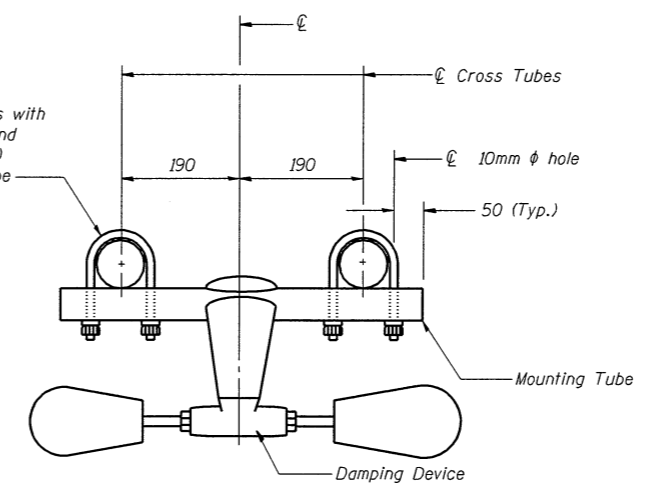


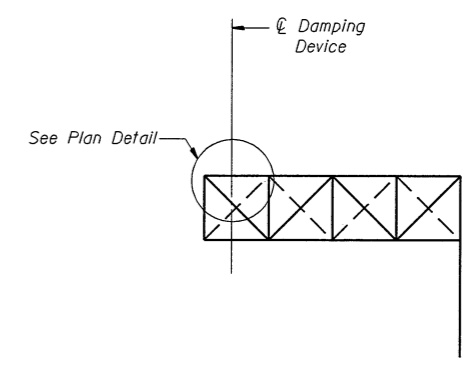
ROUTE NO.	SECTION	COUNTY	SHEET NO.	SHEET NO.
F. A. I. R.T.E. 55		McLEAN	310147	24 SHEETS
FED. ROAD DIST. NO. 7	ILLINOIS	FED. AID PROJECT	Contract No. 70757	
*(57-4) R, HBY, HBR, (57-4VB) DM				



PLAN DETAIL



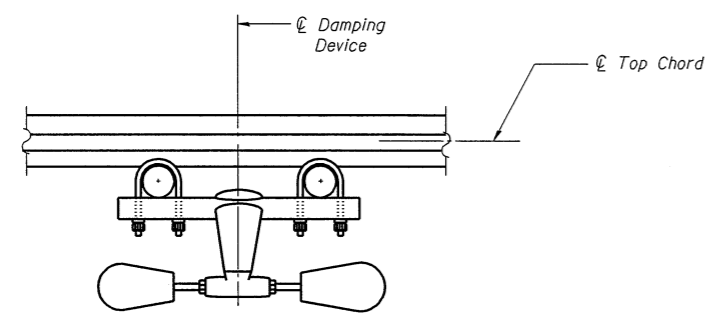
TRUSS DAMPING DEVICE CONNECTION DETAIL



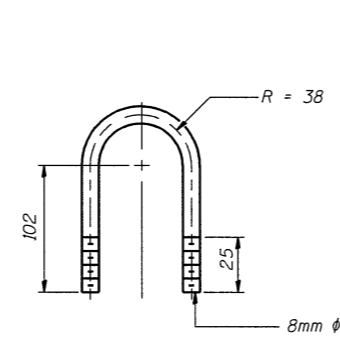
ELEVATION
Aluminum Cantilever Sign Structure

GENERAL NOTES

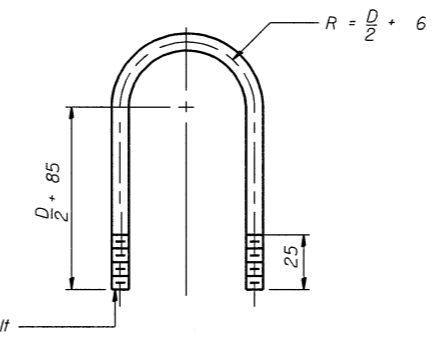
- Damper: One damper per truss. (14 Kg Stockbridge-Type Aluminum) 29" minimum between ends of weights
- Materials: Aluminum tubes shall be ASTM B221(M) alloy 6061 temper T6
- All dimensions are in millimeters (mm) except as noted.



SECTION A-A



DAMPING DEVICE MOUNTING TUBE U-BOLT DETAIL
(Typical)



TOP CHORD TO CROSS TUBE U-BOLT DETAIL
(Typical)

SHEET TITLE		CANTILEVER SIGN STRUCTURE DAMPING DEVICE	
PROJECT	F.A.I. 55 SECTION (57-4)R, HBY, HBR, (57-4VB)DM McLEAN COUNTY	PROJECT NO.	9450
SCALE		DATE	10/08/04
DRAWN BY	TFG	CHECKED BY	MCB
DRAWING NO.			
COOMBE-BLOXDORF P.C. Engineers / Land Surveyors Springfield, Illinois Design Firm License No. 184-002703		15	OF 24 SHTS