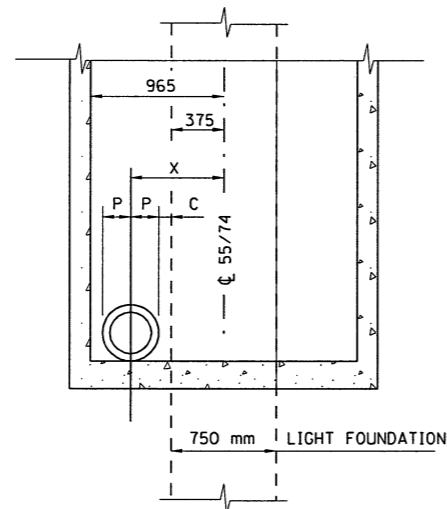
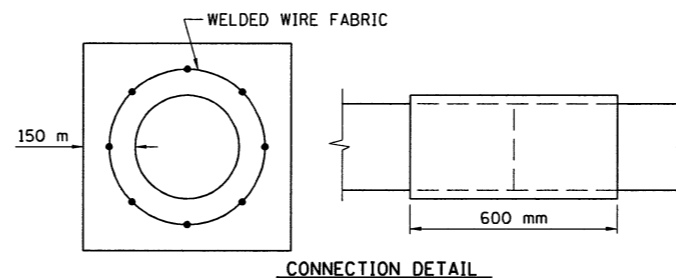


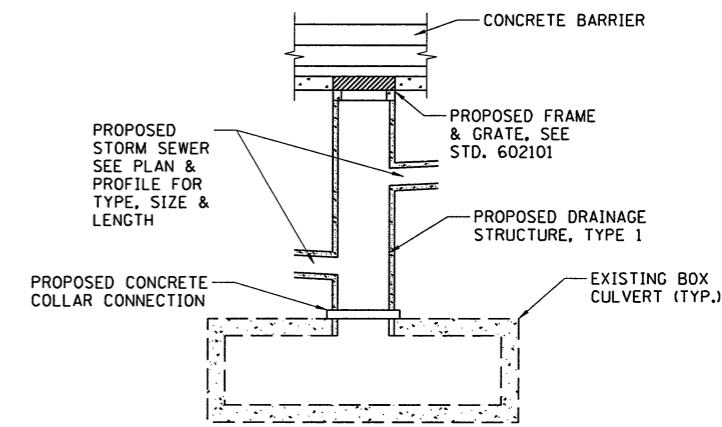
NOMINAL PIPE DIA	ACTUAL "P"	X	X+P	X-P	C
300	203	762	965	559	184



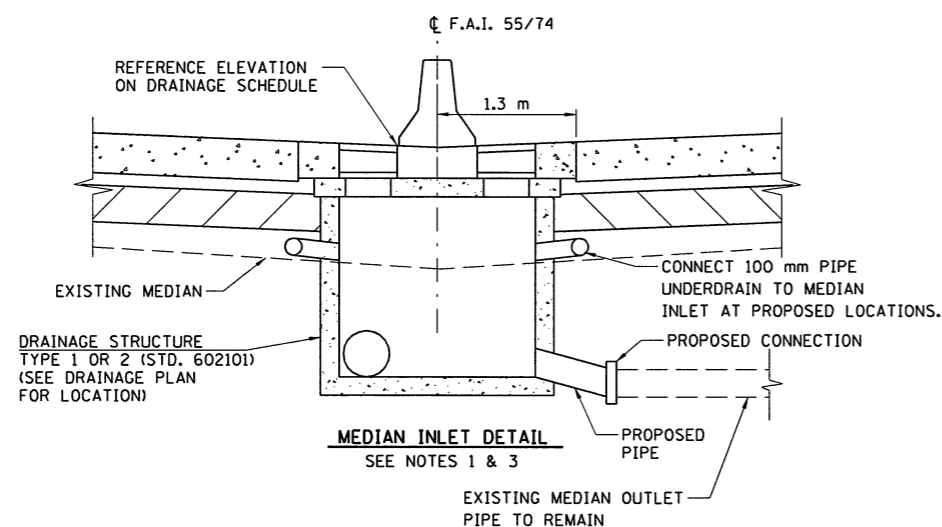
SECTION THRU MEDIAN INLET SHOWING OUTLET PIPE LOCATION



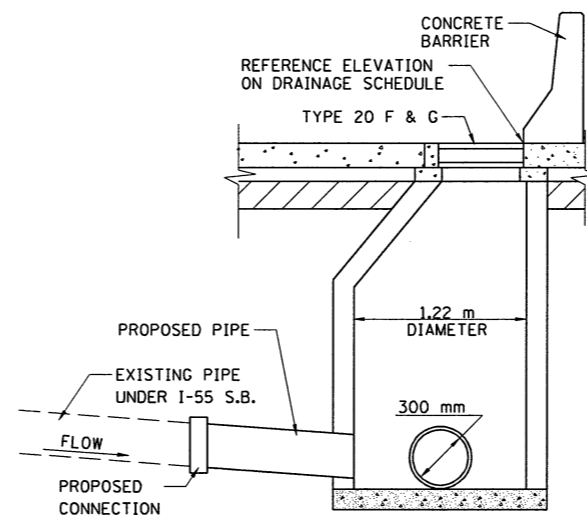
CONNECTION DETAIL



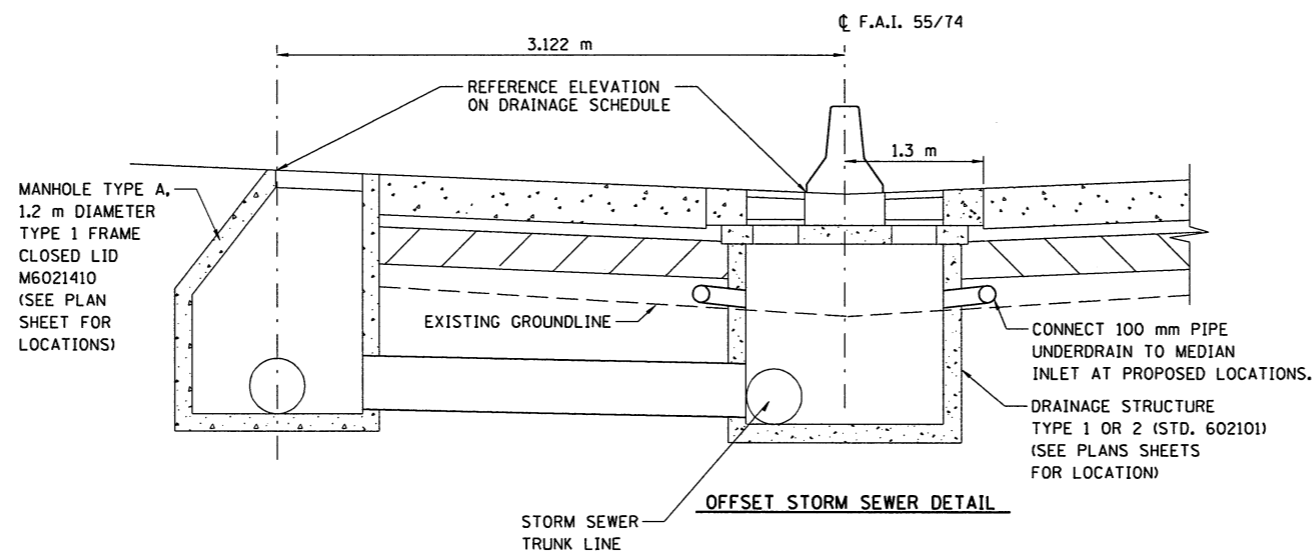
**BOX CULVERT CONNECTION DETAIL
ELEVATION VIEW
SEE NOTE 4**



**MEDIAN INLET DETAIL
SEE NOTES 1 & 3**



**MANHOLE DETAIL @ STA. 37+436
SEE NOTE 3**



OFFSET STORM SEWER DETAIL

NOTES

- GRATES OF ALL PROPOSED MEDIAN INLETS SHALL BE MECHANICALLY FASTENED TO THE STRUCTURE TO THE SATISFACTION OF THE ENGINEER. THE COST OF THIS WORK SHALL BE INCLUDED IN THE COST OF THE MEDIAN INLET STRUCTURE.
- WHERE INLETS ARE REMOVED AND NOT REPLACED, THE EXISTING OUTLET PIPE SHALL BE PLUGGED AND ABANDONED. THE COST OF THIS WORK SHALL BE INCLUDED IN THE UNIT COST FOR INLET REMOVAL.
- CONNECT PROPOSED PIPE TO THE EXISTING PIPE WITH THE APPROPRIATE COLLAR CONNECTION THE COST OF THIS CONNECTION AND THE PROPOSED LENGTH OF PIPE WILL BE INCLUDED IN THE COST OF THE INLET/MANHOLE.
- CONNECT PROPOSED STORM SEWER PIPE TO THE EXISTING BOX CULVERT WITH THE APPROPRIATE CONCRETE COLLAR CONNECTION. THE COST OF THIS CONNECTION WILL BE INCLUDED IN THE COST OF THE PROPOSED STORM SEWER.

ILLINOIS DEPARTMENT OF TRANSPORTATION
F.A.I. 55
SECTION (57-41R, HBY, HBR, 157-4VB1DM)
MCLEAN COUNTY

DRAINAGE DETAILS

REVISIONS	NAME	DATE

JOB NO. 94S2063
DATE 6/25/2009

6/25/2009 #FILE#
LAYOUT 04/10/02
DRAWN 03/05/04
REVIEWED DLH 03/18/04