

BR. APP. PAVT. (SPL)
SLAB ① - AREA 190.3 SM

REINFORCEMENT			
BAR	NO.	SIZE	LENGTH (m)
A	28	30	8.20
A1	16	30	6.20
A2	28	15	3.05
A3	40	15	5.94
B	105	25	10.82
B1	27	10	5.94
TIE BARS	41	20	0.75

BR. APP. PAVT. (SPL)
SLAB ② - AREA 181.7 SM

REINFORCEMENT			
BAR	NO.	SIZE	LENGTH (m)
A	28	30	8.20
A1	16	30	6.20
A2	28	15	3.05
A3	40	15	5.94
B	105	25	10.35
B1	26	10	5.94
TIE BARS	40	20	0.75

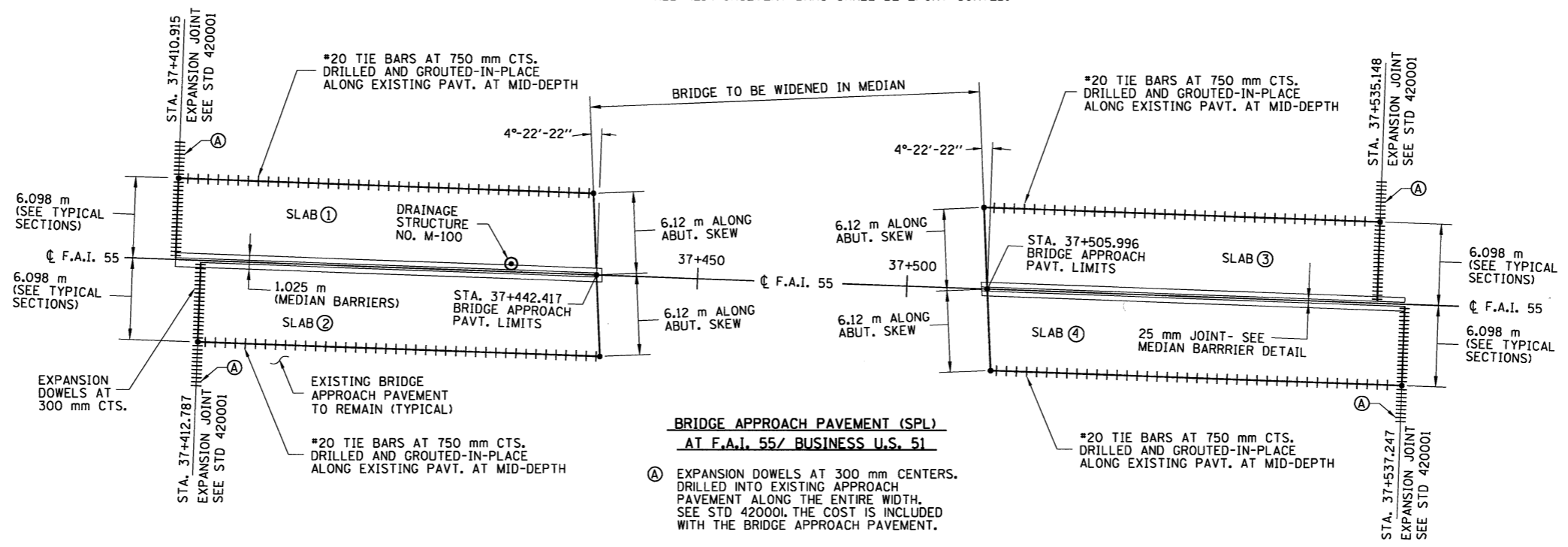
BR. APP. PAVT. (SPL)
SLAB ③ - AREA 178.8 SM

REINFORCEMENT			
BAR	NO.	SIZE	LENGTH (m)
A	28	30	8.20
A1	16	30	6.20
A2	28	15	3.05
A3	40	15	5.94
B	105	25	10.24
B1	26	10	5.94
TIE BARS	39	20	0.75

BR. APP. PAVT. (SPL)
SLAB ④ - AREA 188.8 SM

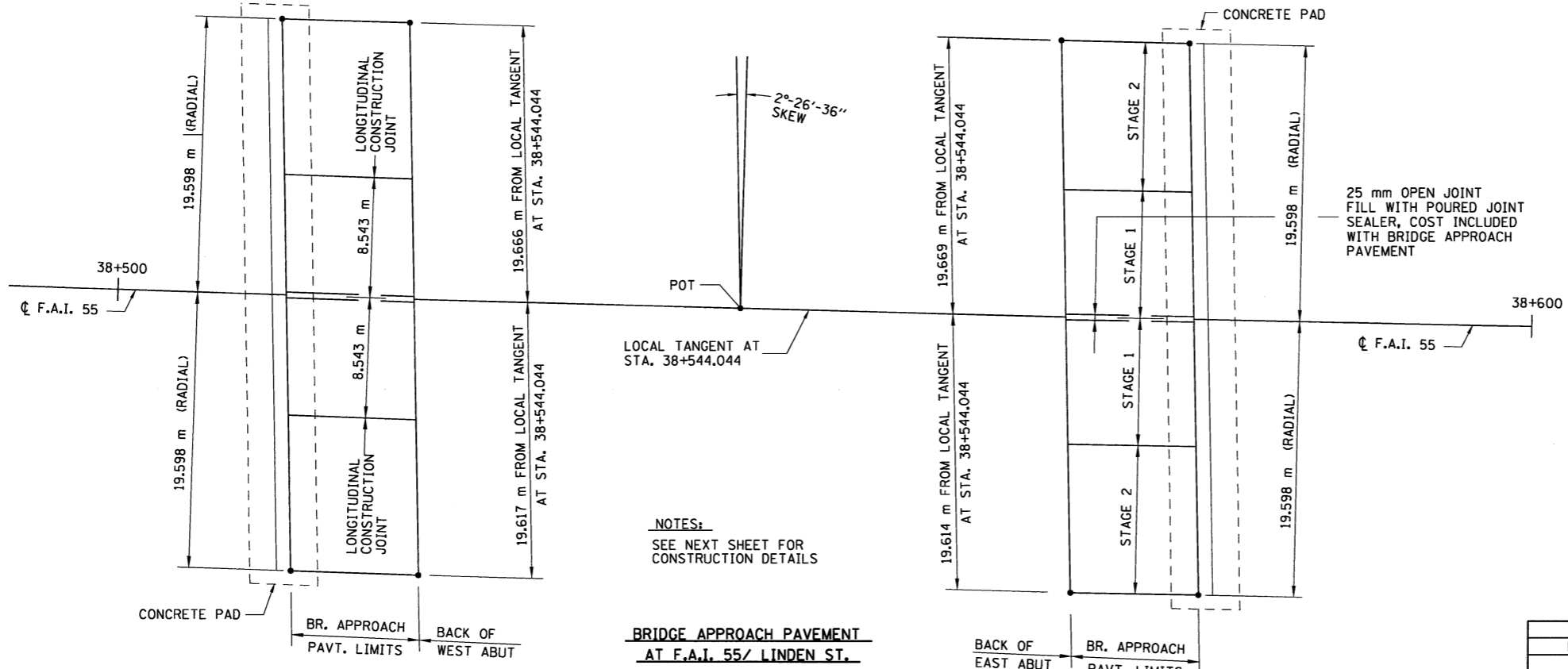
REINFORCEMENT			
BAR	NO.	SIZE	LENGTH (m)
A	28	30	8.20
A1	16	30	6.20
A2	28	15	3.05
A3	40	15	5.94
B	105	25	10.58
B1	26	10	5.94
TIE BARS	41	20	0.75

NOTES FOR U.S. 51:
 SEE STANDARD 2353 FOR CONSTRUCTION DETAILS, REINFORCEMENT LAYOUT & BAR BEND DETAILS.
 APPROACH PAVEMENT THICKNESS SHALL BE THE SAME AS ADJACENT PAVEMENT.
 PAVEMENT ADJACENT TO THE SOUTH BRIDGE APPROACHES SHALL BE 315 mm THICK.
 PAVEMENT ADJACENT TO THE NORTH BRIDGE APPROACHES SHALL BE 300 mm THICK.
 ALL REINFORCEMENT BARS SHALL BE EPOXY COATED.



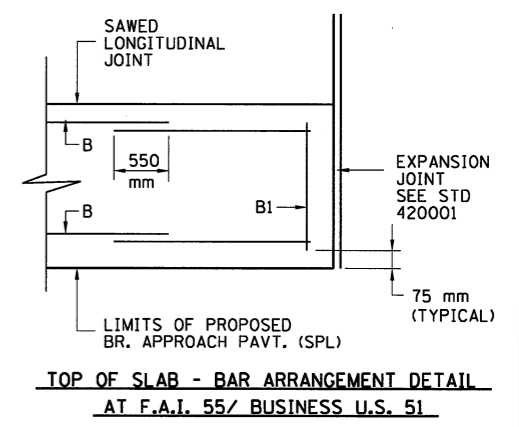
**BRIDGE APPROACH PAVEMENT (SPL)
AT F.A.I. 55/ BUSINESS U.S. 51**

Ⓐ EXPANSION DOWELS AT 300 mm CENTERS. DRILLED INTO EXISTING APPROACH PAVEMENT ALONG THE ENTIRE WIDTH. SEE STD 420001. THE COST IS INCLUDED WITH THE BRIDGE APPROACH PAVEMENT.



NOTES:
SEE NEXT SHEET FOR CONSTRUCTION DETAILS

**BRIDGE APPROACH PAVEMENT
AT F.A.I. 55/ LINDEN ST.**



**TOP OF SLAB - BAR ARRANGEMENT DETAIL
AT F.A.I. 55/ BUSINESS U.S. 51**

REVISIONS	
NAME	DATE

ILLINOIS DEPARTMENT OF TRANSPORTATION
 F.A.I. 55
 SECTION (57-4)R, HBY, HBR, (57-4VB)DM
 MCLEAN COUNTY

BRIDGE APPROACH DETAILS

JOB NO. 94S2063
 DATE 7/27/2009

7/27/2009
 #7158
 LAYOUT: J.H. 04/05/02
 DRAWN: J.H. 03/05/04
 REVIEWED: D.H. 03/18/04