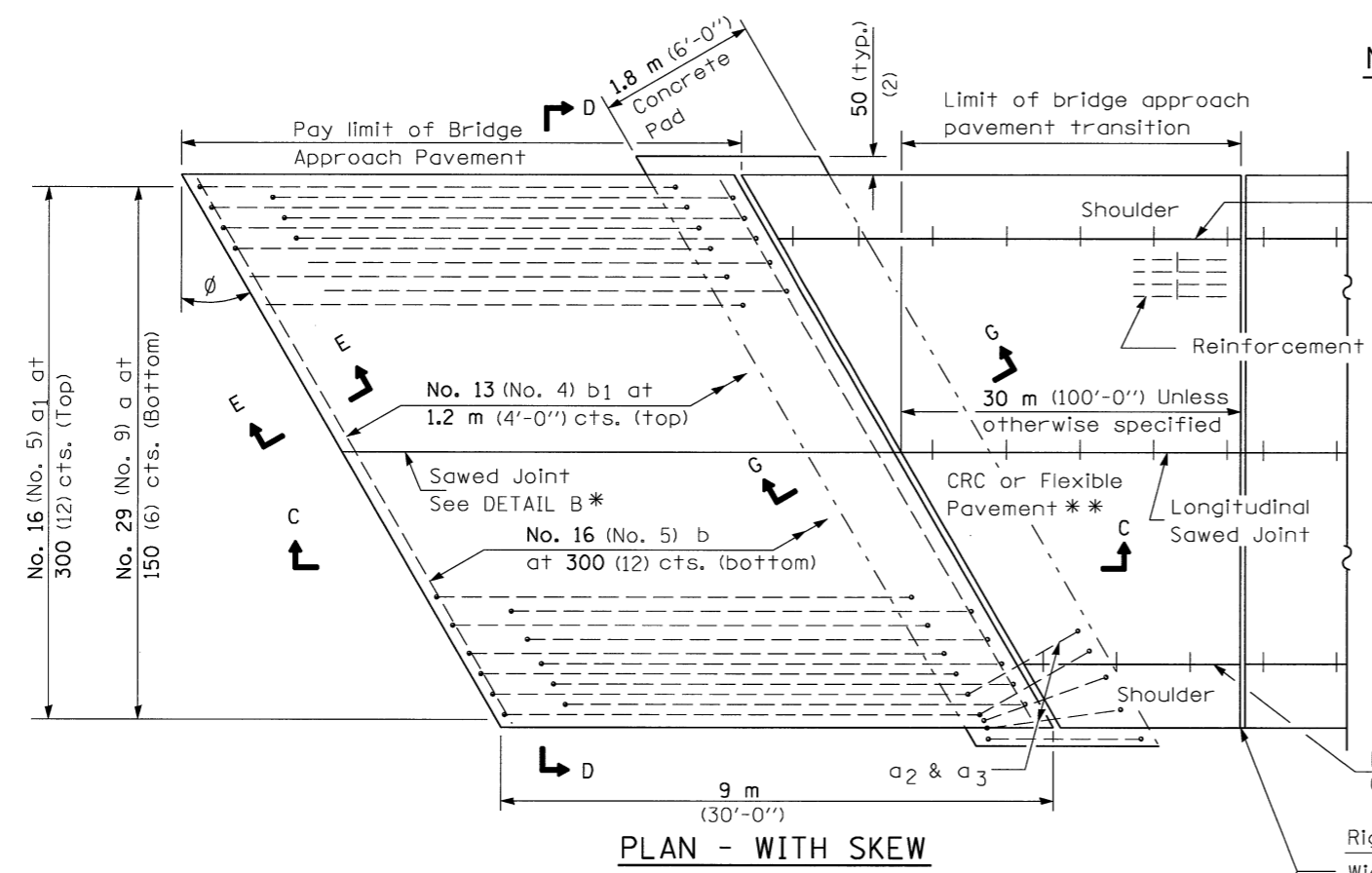


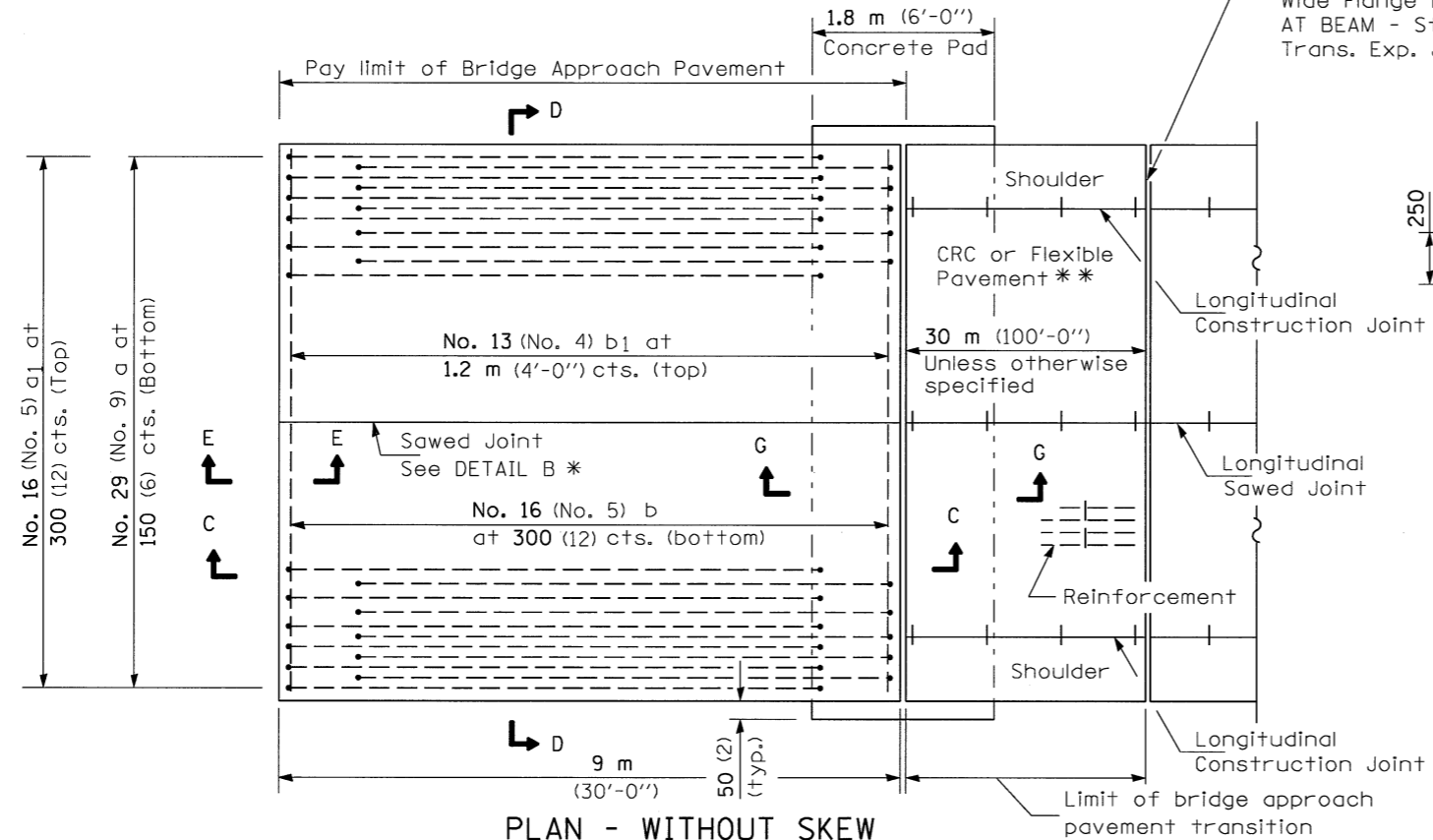
F.A.I. RTE.	SECTION	COUNTY	TOTAL SHEETS	SHEET NO.
55		MCLEAN	310	172
FED. ROAD DIST. NO. ILLINOIS		FED. AID PROJECT		

• (57-41R, HBY, HBR, (57-4VB)DM CONTRACT #70757

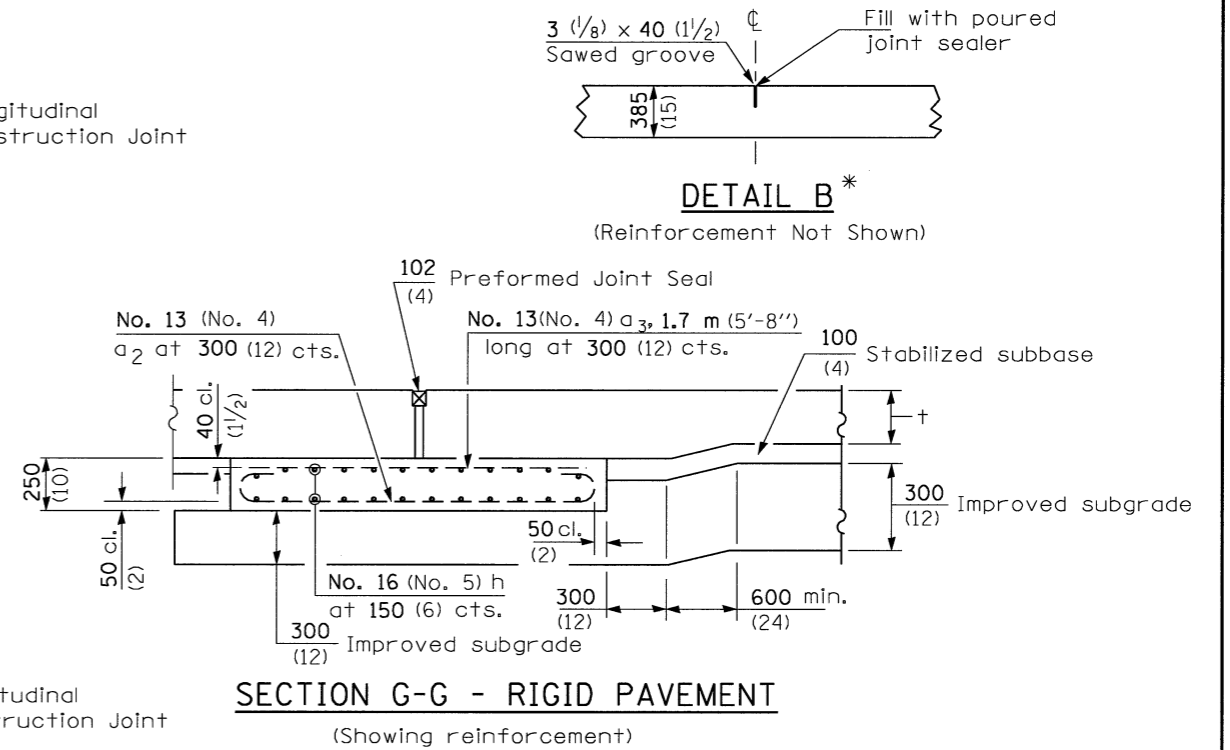
NEW CONSTRUCTION



PLAN - WITH SKEW

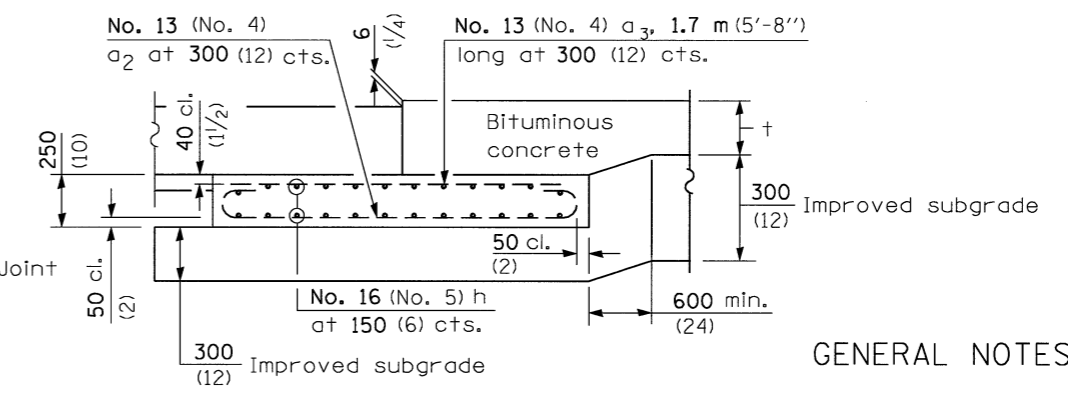


PLAN - WITHOUT SKEW



SECTION G-G - RIGID PAVEMENT
(Showing reinforcement)

Rigid Pavement only:
Wide Flange Beam Terminal Joint (See DETAIL AT BEAM - Standard 421101 or 421106 or 50 (2) Trans. Exp. Joint as detailed on Standard 420001.



SECTION G-G - FLEXIBLE PAVEMENT
(Showing reinforcement)

GENERAL NOTES

- THICKNESS-'t' = Thickness of Pavement.
- See Standard 421001 for reinforcement details not shown.
- See Standard 420001 for joint details not shown.
- All dimensions are in millimeters (inches) unless otherwise shown.

ILLINOIS DEPARTMENT OF TRANSPORTATION
F.A.I. 55
SECTION (57-41R, HBY, HBR, (57-4VB)DM
McLEAN COUNTY

BRIDGE APPROACH DETAILS

REVISIONS	
NAME	DATE

HANSON

JOB NO. 94S2063
DATE 7/27/2009

LAYOUT	JUH	04/09/02
DRAWN	JUH	03/05/04
REVIEWED	DLH	03/18/04

7/27/2009 #FILE*

* Saw ϕ or lane edge if poured two or more lane widths at a time.
** Omit Reinforcement, tie bars and Long. sawed Jt. for Flexible Pavement.