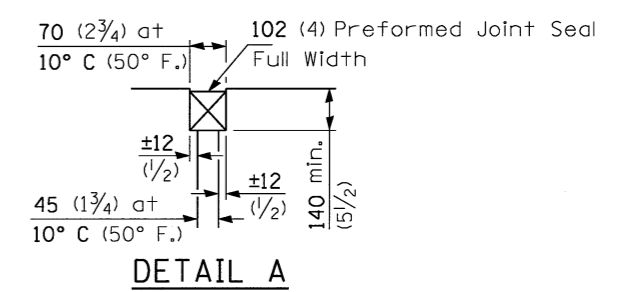
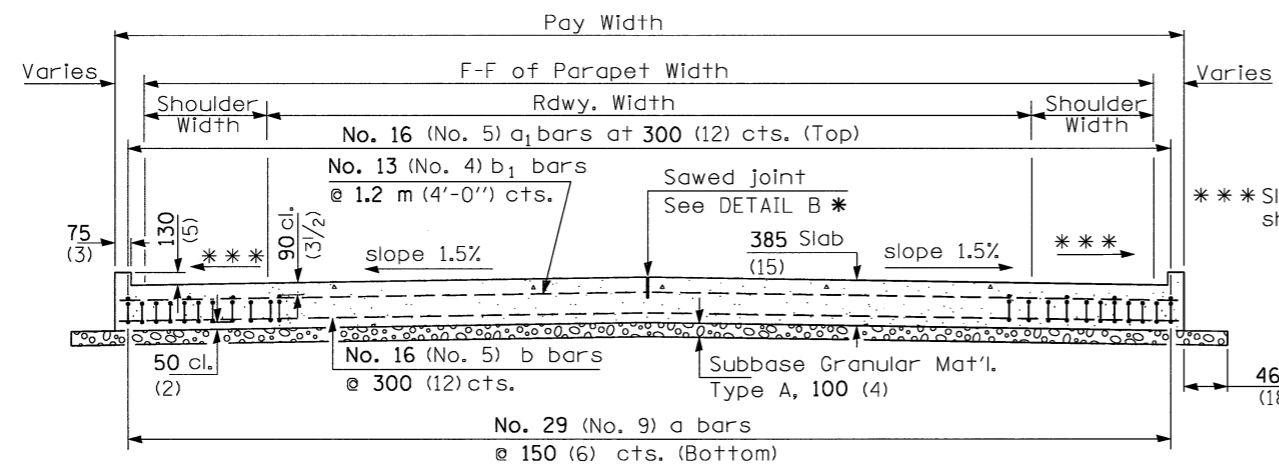


PREFORMED JOINT SEAL



DETAIL A

① Stagger No. 29 (No. 9) a bars as shown on plan - full width

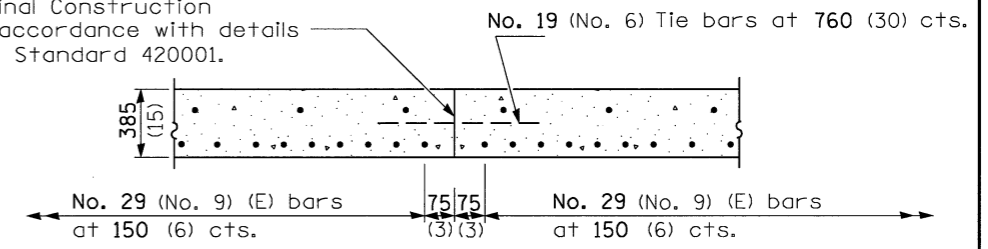


SECTION D-D

(See Plan for Dimensions not shown)
All reinforcement bars shall be epoxy coated.

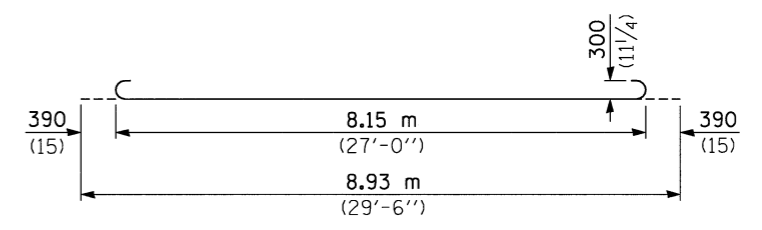
*** Slope same as adjacent shoulder slope.

Longitudinal Construction Joint in accordance with details shown on Standard 420001.

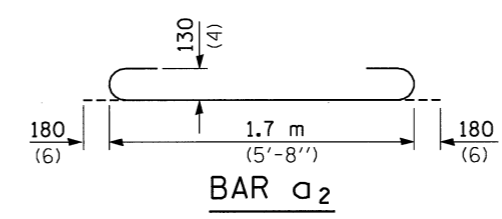


OPTIONAL LONGITUDINAL CONSTRUCTION JOINT

As approved by the Engineer, the Contractor may elect to reduce the widths of pour by use of the Optional Longitudinal Construction Joint shown. Joints shall be located at the edge of a traffic lane.



BAR a



BAR a2

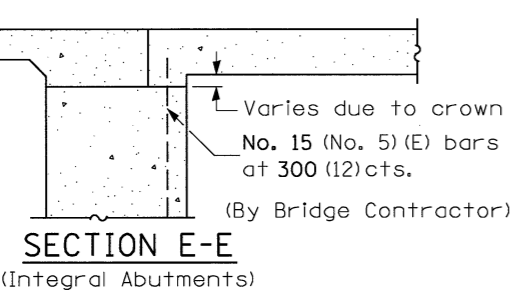
All dimensions are in millimeters (inches) unless otherwise shown.

DESIGN STRESSES
 $f_y = 400 \text{ MPa (60,000 p.s.i.)}$
 $f'_c = 24 \text{ MPa (3,500 p.s.i.)}$
 $n = 8.5$

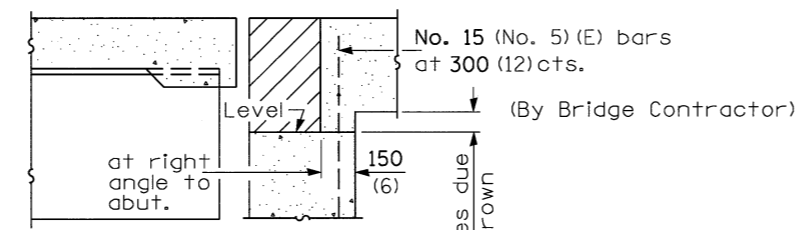
REVISIONS	
NAME	DATE



JOB NO.
94S2063
DATE
7/27/2009



SECTION E-E
(Integral Abutments)



SECTION E-E
(Jointed Abutments)

7/27/2009 #FILE*

LAYOUT	JRH	04/09/02
DRAWN	JRH	03/05/04
REVIEWED	DLH	03/18/04