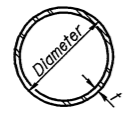


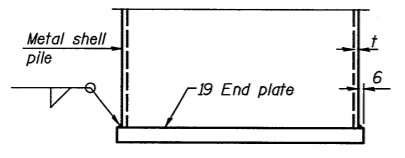
F.A.I. RTE.	SECTION	COUNTY	TOTAL SHEETS	SHEET NO.
55	*	McLEAN	310	200

FED. ROAD DIST. NO. 7 ILLINOIS FAP
 *(57-4)R, HBY, HBR, (57-4VB)DM
 Contract No. 70757

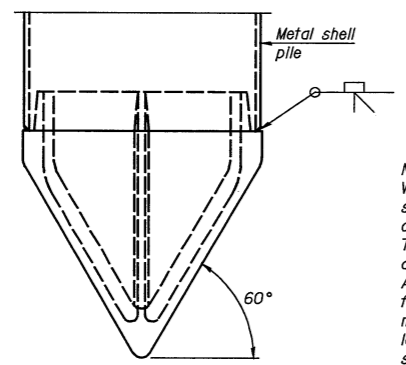


METAL SHELL PILE TABLE

Designation and outside diameter	Wall thickness t	Weight per meter (kg/m)	Inside volume (m ³ /m)
PP12	5	33.63	0.0687
PP12	6	46.68	0.0670
PP14	6	54.62	0.0923
PP14	8	67.87	0.0906



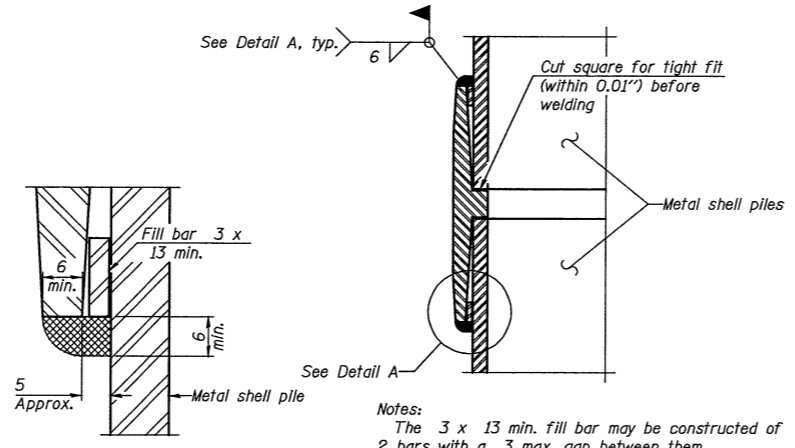
END PLATE ATTACHMENT



METAL SHELL PILE SHOE ATTACHMENT

(See Note A)

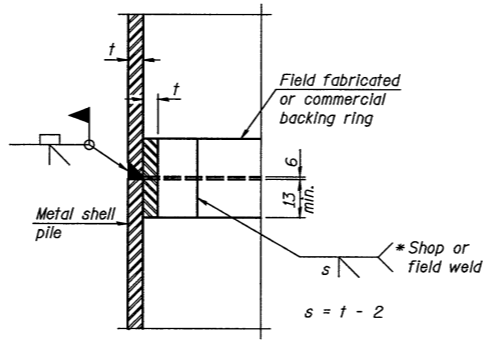
Note A:
 When called for on the plans, the Contractor shall furnish metal shell pile shoes consisting of a single piece conical pile point as shown. The pile shoes shall be cast in one piece steel according to either ASTM A 148 Grade 90-60 or AASHTO M 103 Grade 65-35 and shall provide full bearing over the full circumference of the metal shell pile. The pile shoe shall have tapered leads to assure proper alignment and fitting and shall be secured to the pile with a circumferential weld.



DETAIL A

Notes:
 The 3 x 13 min. fill bar may be constructed of 2 bars with a 3 max. gap between them.
 Pile segments shall be driven to solid contact with splicer before welding.

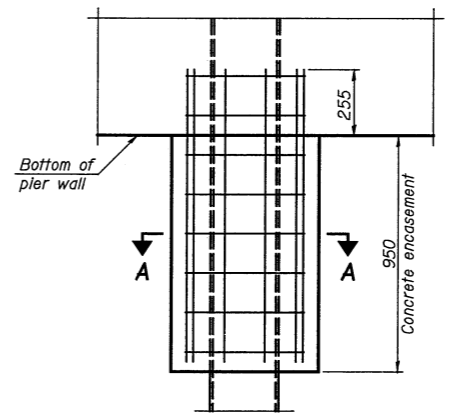
WELDED COMMERCIAL SPLICE



COMPLETE PENETRATION WELD SPLICE

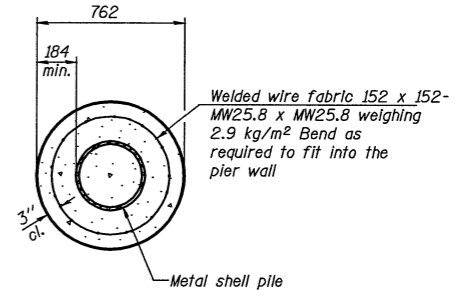
* Field fabricated backing ring may be made from pile shell by removing segment to allow reducing circumference and vertically rejoin with partial joint penetration weld.

Note:
 The metal shell piles shall be according to ASTM A 252 Grade 3.



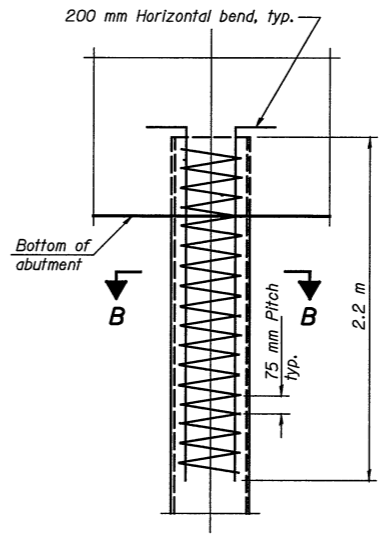
ELEVATION

CONCRETE ENCASEMENT AT PIERS



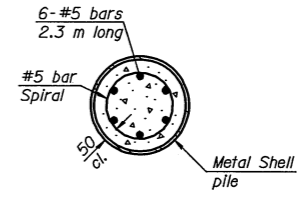
SECTION A-A

Note:
 Forms for encasement may be omitted when soil conditions permit.



ELEVATION

METAL SHELL REINFORCEMENT AT ABUTMENTS



SECTION B-B

(All dimensions are in millimeters (mm) except as noted.)

ILLINOIS DEPARTMENT OF TRANSPORTATION			
SHEET TITLE METAL SHELL PILES			
PROJECT F.A.I. 55 OVER BUSINESS U.S. 51 SECTION 57-4HBR-4 STATION 37+474.206 McLEAN COUNTY STRUCTURE NO. 057-0024 (N.B.) & STRUCTURE NO. 057-0025 (S.B.)	PROJECT NO. 08049-5	SCALE DATE 07/15/2009	DRAWN BY TFG/CFC
COOMBE-BLOXDORF P.C. Engineers / Land Surveyors Springfield, Illinois Design Firm License No. 184-002703		CHECKED BY CME/MCB	DRAWING NO. 24
			OF 24 SHTS