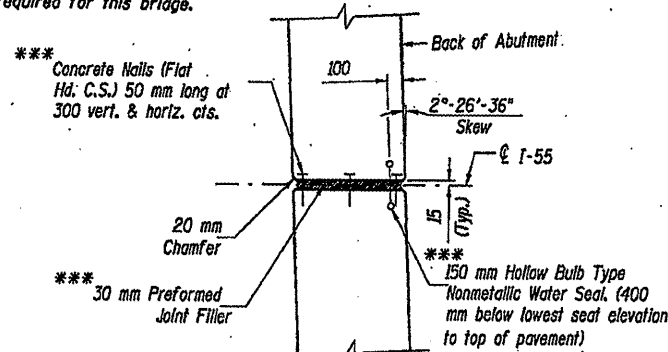


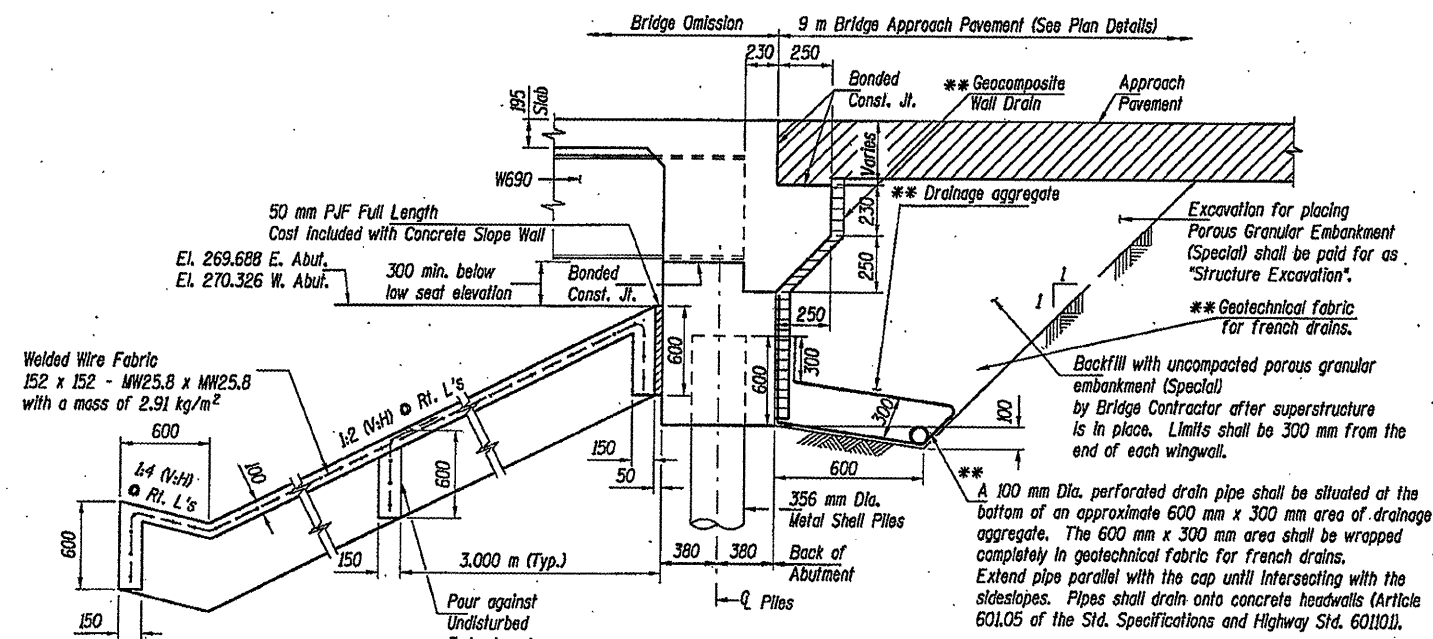
**GENERAL NOTES**

- Fasteners shall be AASHTO M164M TYPE 1, mechanically galvanized bolts. Bolts M 22, open holes 24 mm Dia., unless otherwise noted.
- Calculated mass of Structural Steel = 14,360 kg. ( M 270M, Grade 250)  
Calculated mass of Structural Steel = 121,700 kg. ( M 270M, Grade 345)
- The Inorganic zinc rich primer / Acrylic / Acrylic Paint System shall be used for shop and field painting of new structural steel except where otherwise noted. The color of the final finish coat for all interior steel surfaces shall be gray, Munsell No. 5B 7/1. The color of the final finish coat for the exterior and bottom flange of the fascia beams shall be Interstate Green, Munsell No. 7.5G 4/8. See Special Provision for "Cleaning and Painting New Metal Structures".
- Field welding of construction accessories will not be permitted to beams.
- Anchor bolts shall be set before bolting diaphragms over supports.
- The structural steel bearing plates of the Elastomeric Bearing Assembly shall conform to the requirements of AASHTO M 270M, Grade 345.
- The main load carrying member components subject to tensile stress shall conform to the Supplemental Requirements for Notch Toughness Zone 2. These components are the wide flange beams and all splice plate material except fill plates.
- Reinforcement bars shall conform to the requirements of ASTM A 706M Gr 400. See Special Provisions.
- Slope Wall shall be reinforced with welded wire fabric, 152 x 152 - MW25.8 x MW25.8 with a mass of 2.91 kg/m<sup>2</sup>.
- Bearing seat surfaces shall be constructed or adjusted to the designated elevations within a tolerance of 3 mm. Adjustment shall be made either by grinding the surface or by shimming the bearing. Two 3 mm adjusting shims, of the dimensions of the bottom bearing plate, shall be provided for each bearing in addition to all other plates or shims. For Type I Elastomeric Bearings, shims of the dimensions of top plate shall be provided and placed as detailed.
- The Contractor shall drive test piles to 110% of the nominal required bearing specified in production locations at substructures specified or approved by the Engineer before ordering the remainder of piles.
- All dimensions are in millimeters (mm) except as noted.
- For pavement removal and excavation between existing and new abutments, see roadway plans.
- Slipforming of the concrete parapets will not be allowed.
- All construction joints shall be bonded.
- The SSPC OP-1 painting contractor certifications will be required for this bridge.



**PARTIAL PLAN - JOINT DETAIL AT ABUTMENTS**

\*\*\* Cost Included with "Concrete Structures".

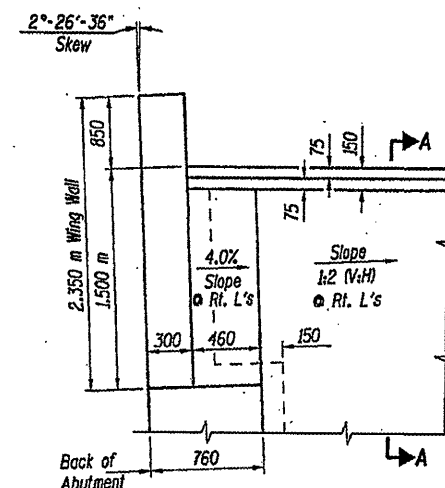


**SECTION THRU SLOPE WALL**

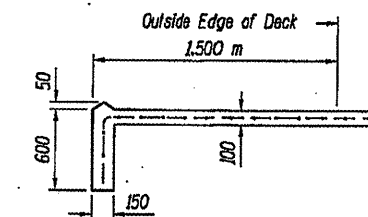
**SECTION THRU INTEGRAL ABUTMENT**

Dimensions are in R.L.'s

\*\*\* Cost Included with "Porous Granular Embankment (Special)".



**PARTIAL PLAN SLOPE WALL TREATMENT AT WING WALL**



**SECTION A-A**

**GENERAL NOTES & SLOPEWALL DETAILS**  
**F.A.I. 55 OVER LINDEN STREET**  
**SECTION (57-4HB-3)BR**  
**STRUCTURE NO. 057-0235 (N.B.) & 057-0236 (S.B.)**  
**McLEAN COUNTY**  
**STATION 38+544.044**

© Copyright Hanson Professional Services Inc. 2003

**HANSON**

JOB NO. 94S2063

DATE 03/26/04

CONTRACT NO. 78787	ROUTE NO. 1-55	SECTION 157-4HB-3)BR	COUNTY McLean	TOTAL SHEETS 310	SHEET NO. 202
FED. ROAD DIST. NO. 7			ILLINOIS PROJECT	Sheet 2 of 31	

**TOTAL BILL OF MATERIAL**

ITEM	UNIT	NORTHBOUND		SOUTHBOUND		TOTAL
		SUPER.	SUB.	SUPER.	SUB.	
Removal of Existing Structures No. 1	Each	1	-	-	-	1
Removal of Existing Structures No. 2	Each	-	-	1	-	1
Structure Excavation	m <sup>3</sup>	-	443	-	461	904
Concrete Superstructure	m <sup>3</sup>	238.3	-	239.4	-	477.7
Concrete Structures	m <sup>3</sup>	-	186.0	-	186.7	372.7
Bridge Deck Grooving	m <sup>2</sup>	872	-	875	-	1,747
Protective Coat	m <sup>2</sup>	976	-	978	-	1,954
Elastomeric Bearing Assembly, Type I	Each	9	-	9	-	18
Furnishing and Erecting Structural Steel Bridge No. 2	L. Sum	-	-	-	-	1
Stud Shear Connectors	Each	4,671	-	4,671	-	9,342
Reinforcement Bars, Epoxy Coated	kg	32,880	17,480	32,920	17,480	100,760
Slope Wall 100 mm	m <sup>2</sup>	-	445	-	445	890
Furnishing Metal Shell Piles 356 mm x 6.35 mm	m	-	231.5	-	231	462.5
Driving Piles	m	-	660.5	-	660	1320.5
Test Pile Metal Shells	Each	-	2	-	2	4
Furnishing Metal Shell Piles 305 mm x 6.35 mm	m	-	429	-	429	858
Temporary Sheet Piling	m <sup>2</sup>	-	215.2	-	215.2	430.4
Name Plates	Each	1	-	1	-	2
Bar Splicers	Each	631	90	631	90	1,442
Drainage Scuppers, DS-33	Each	1	-	1	-	2
Floor Drains	Each	2	-	2	-	4
Porous Granular Embankment (Special)	m <sup>3</sup>	153	-	153	-	306
Protective Shield	m <sup>2</sup>	280	-	280	-	560
Preformed Joint Seal 64 mm	m	23.1	-	23.1	-	46.2
Anchor Bolts, M24	Each	54	-	54	-	108
Anchor Bolts, M30	Each	18	-	18	-	36

\* Includes bridge deck surface and the top and inside face of parapets.

DATE 03/26/04  
 DRAWN BY  
 CHECKED BY  
 REVIEWED BY