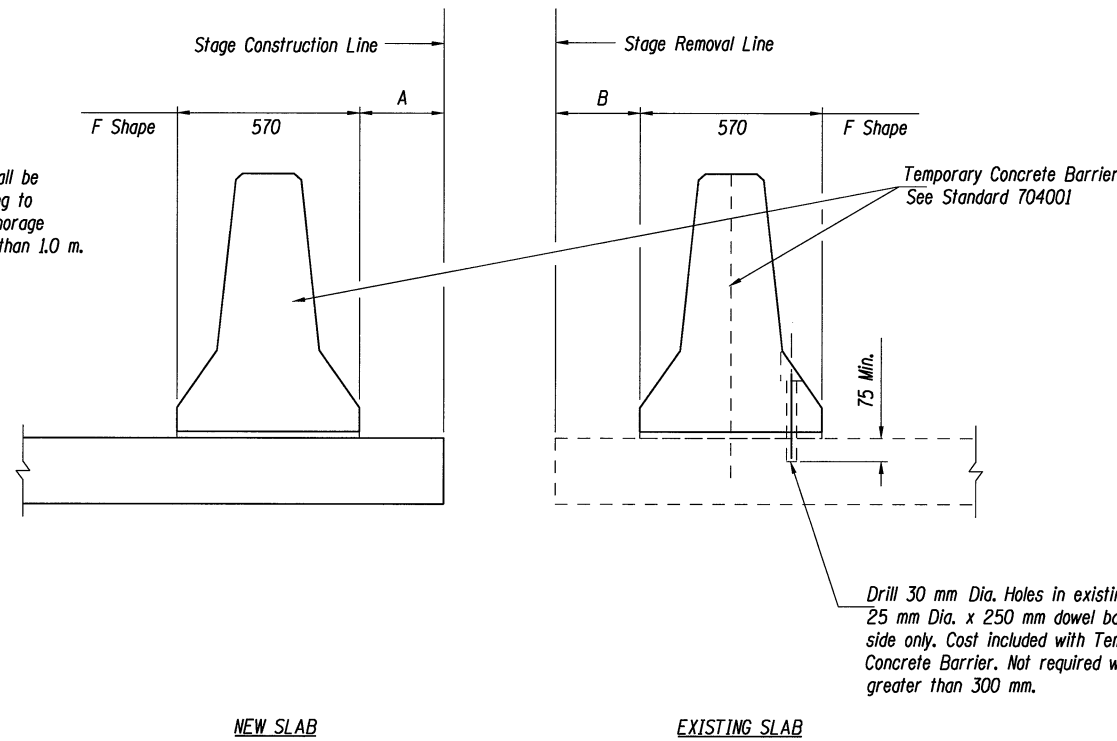


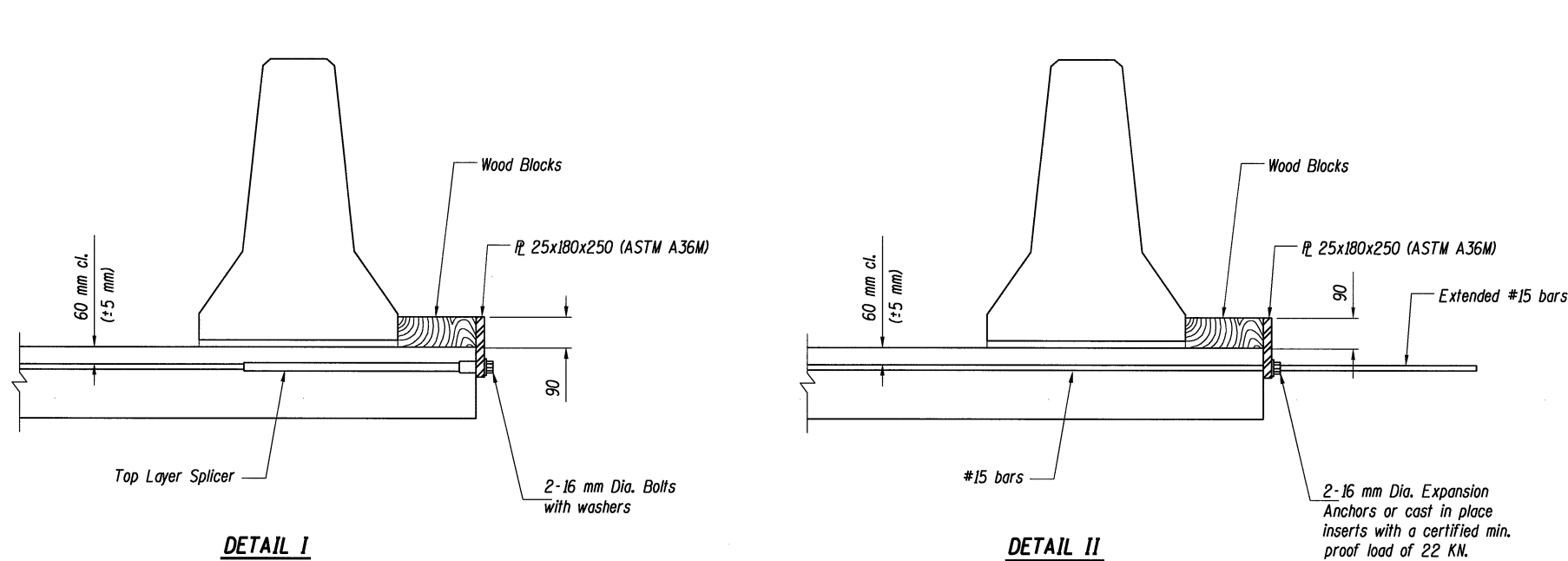
ROUTE NO.	SECTION	COUNTY	TOTAL SHEETS	SHEET NO.
I-55	(57-4HB-3)BR	McLean	310	204
FED. ROAD DIST. NO. 7		ILLINOIS PROJECT		

When "A" is 1.0 m or less the temporary concrete barrier shall be anchored to new slab according to Detail I or Detail II. No anchorage required when "A" is greater than 1.0 m.



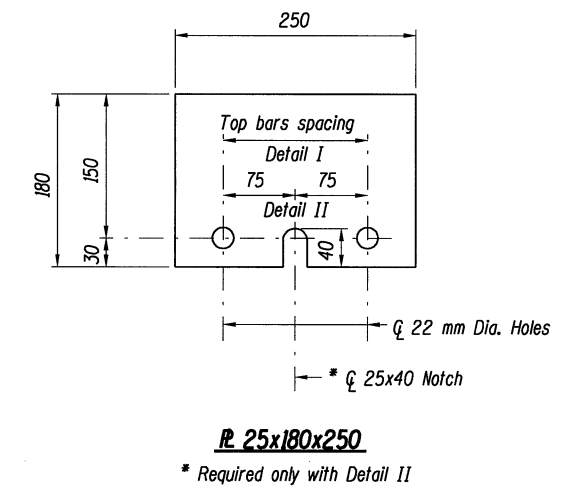
NOTES

- Detail I With Bar Splicer or Couplers:**
Connect one (1) 25x180x250 steel \bar{P} to the top layer of couplers with 2 - 16 mm Dia. bolts screwed to coupler at approximate \bar{C} of each 3 m barrier panel.
- Detail II With Extended Reinforcement Bars:**
Connect one (1) 25x180x250 steel \bar{P} to the concrete slab with 2 - 16 mm Dia. Expansion Anchors or cast in place inserts spaced between the top layer of reinforcement at approximate \bar{C} of each barrier panel.
- Cost of anchorage is included with Temporary Concrete Barrier.
All dimensions are in millimeters (mm) except as noted.
Quantities for Temporary Concrete Barrier and Relocate Temporary Concrete Barrier are included in the Roadway Plans



The 25x180x250 Plate shall not be removed until Stage II Construction forms and reinforcement bars are in place.

The 25x180x250 Plate shall not be removed until Stage II Construction forms and all reinforcement bars are in place and the concrete is ready to be placed.



TEMPORARY CONCRETE BARRIER
F.A.I. 55 OVER LINDEN STREET
SECTION (57-4HB-3)BR
STRUCTURE NO. 057-0235 (N.B.) & 057-0236 (S.B.)
McLEAN COUNTY
STATION 38+544.044



\$TIME\$ 8/16/2009 \$FILE\$
 LAYOUT G.L.C. 11/5/97
 DRAWN D.A.M. 11/5/97
 REVIEWED * * * * *