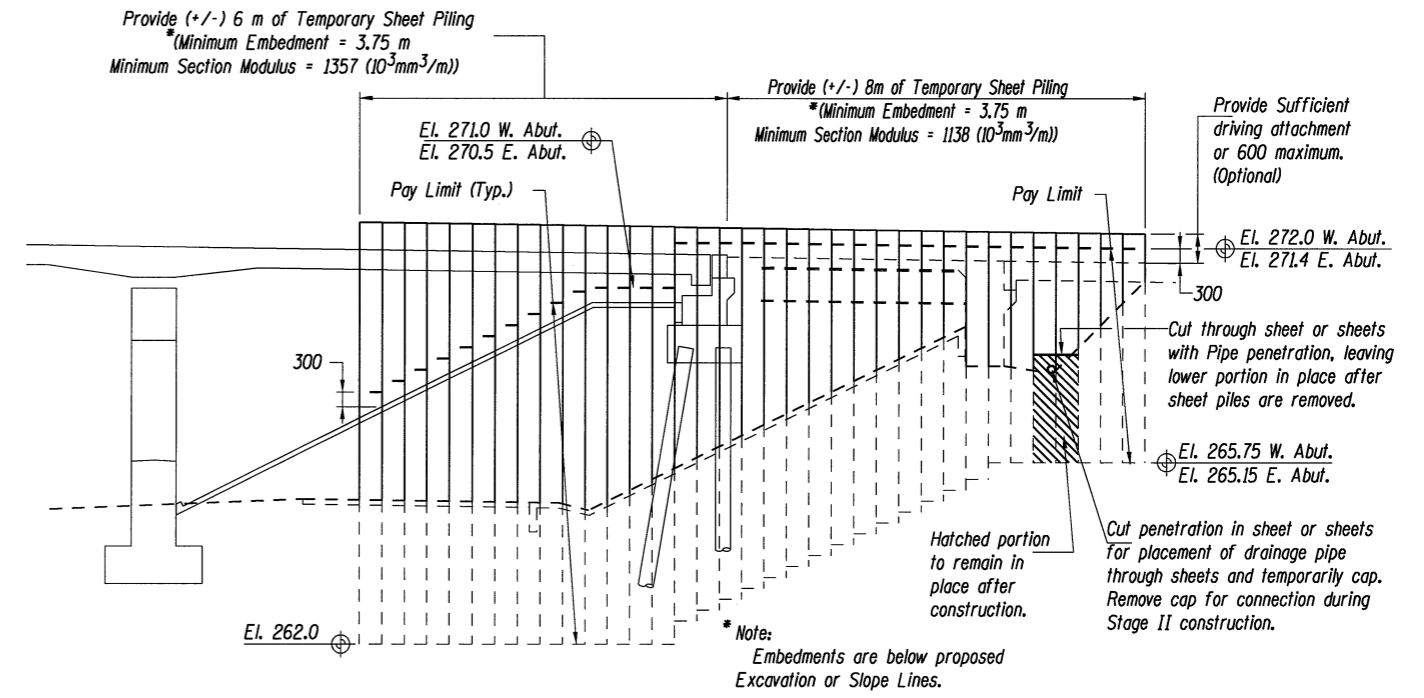


SUGGESTED CONSTRUCTION SEQUENCE

- | | |
|---|--|
| 1. Remove Existing Superstructure - Stage I | 7. Complete Stage I and switch traffic flow. |
| 2. Place Temporary Sheet Piling. | 8. Excavate Stage II to finish grade lines. |
| 3. Remove portion of existing abutment. | 9. Construct Stage II Abutments. |
| 4. Excavate Stage I to finish grade lines. | 10. Complete pipe drain and abutment backfill. |
| 5. Construct Stage I Abutments | 11. Remove Temporary Sheet Piling. |
| 6. Place drainage pipe and backfill and penetrate sheet or sheets with drain. | 12. Complete Stage II Construction. |

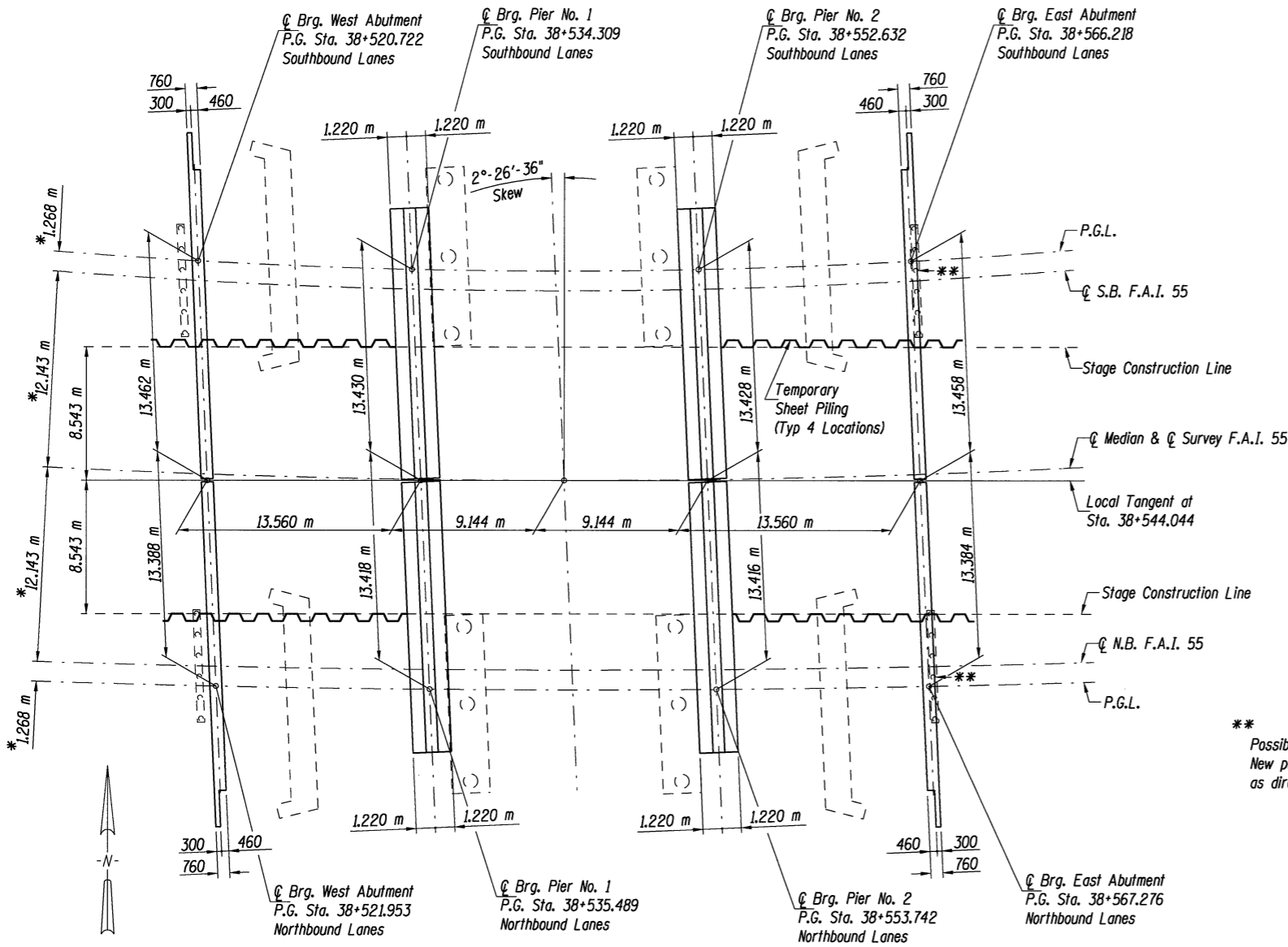


TEMPORARY SHEET PILING
(East Abutment Shown - West Abutment Similar)

Note:
If the Contractor chooses to alter the temporary cantilevered sheet piling design requirements shown on the plans, a design submittal including plan details and calculations will be required for review and acceptance by the Engineer.

Note:
Piles at the east abutment shall be driven through 457 mm (1'-6") diameter precored holes extending to elevation 265.00 according to Article 512.09(c) of the Standard Specifications. Cost included in driving piles.

** Possible interference with existing approach pavement pile. New piles shall be relocated to clear existing piles as directed by the Engineer.



FOOTING LAYOUT

* Radial Dimensions

FOOTING LAYOUT & TEMPORARY SHEET PILING
F.A.I. 55 OVER LINDEN STREET
SECTION (57-4HB-3)BR
STRUCTURE NO. 057-0235 (N.B.) & 057-0236 (S.B.)
McLEAN COUNTY
STATION 38+544.044

TIME \$
8/16/2009
FILE \$

LAYOUT	G.L.C.	11/5/97
DRAWN	D.M.K.	11/5/97
REVIEWED		11/7/97