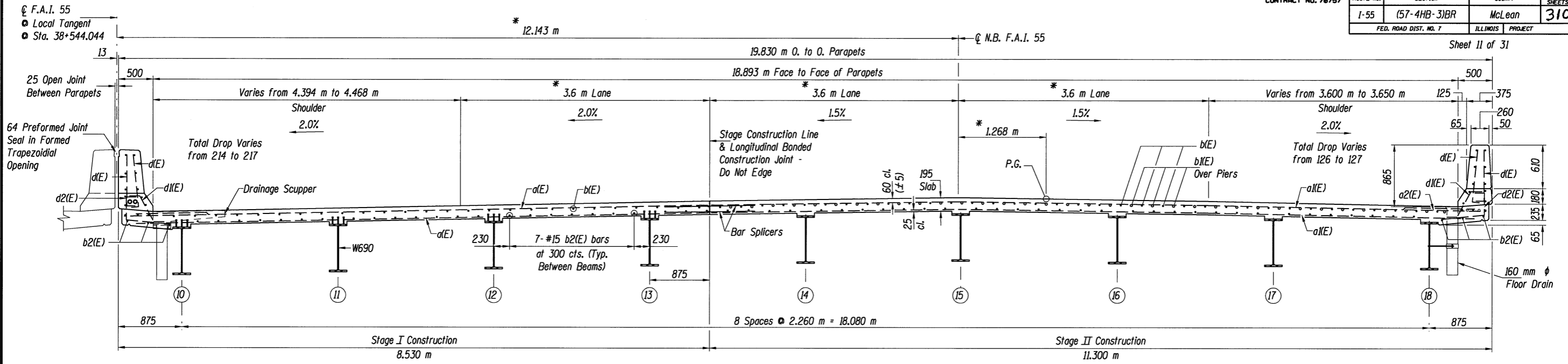


CONTRACT NO. 70757	ROUTE NO.	SECTION	COUNTY	TOTAL SHEETS	SHEET NO.
	I-55	(57-4HB-3)BR	McLean	310	211
	FED. ROAD DIST. NO. 7		ILLINOIS	PROJECT	

Sheet 11 of 31

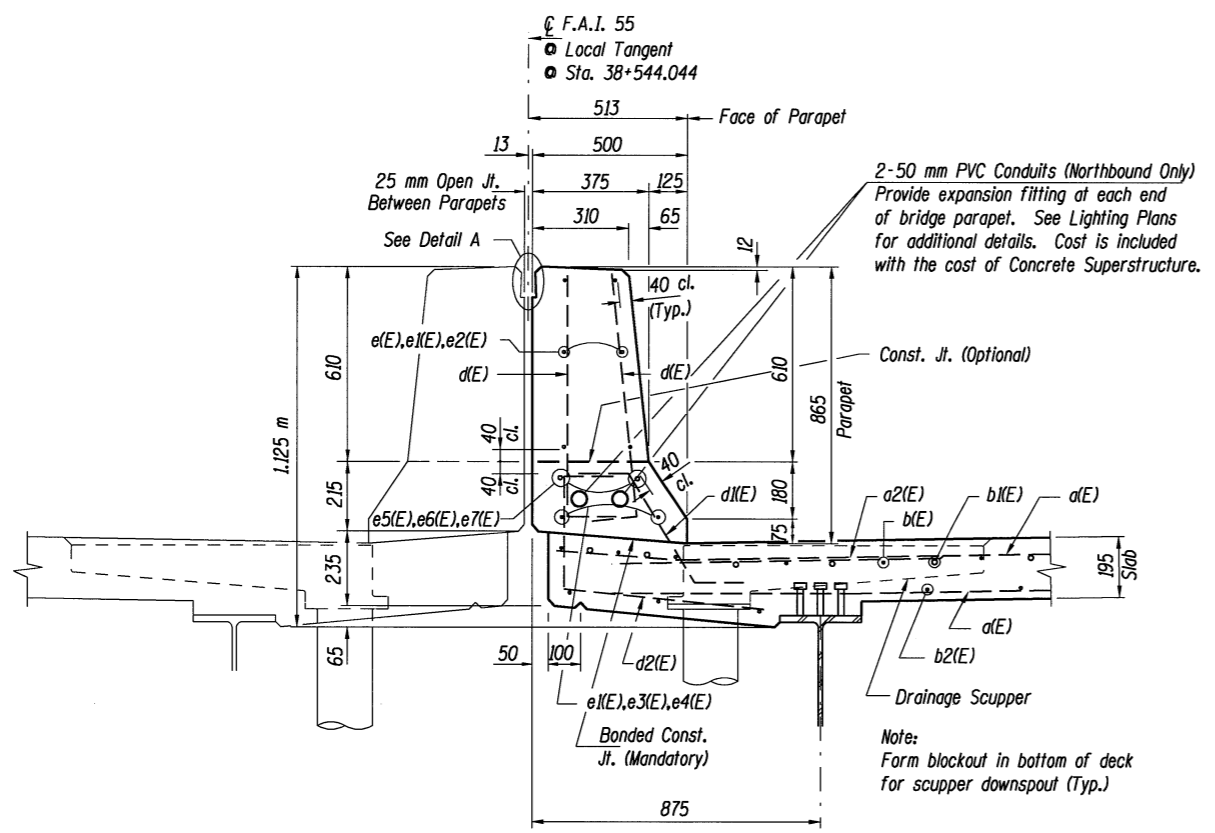


NEAR MIDSPAN

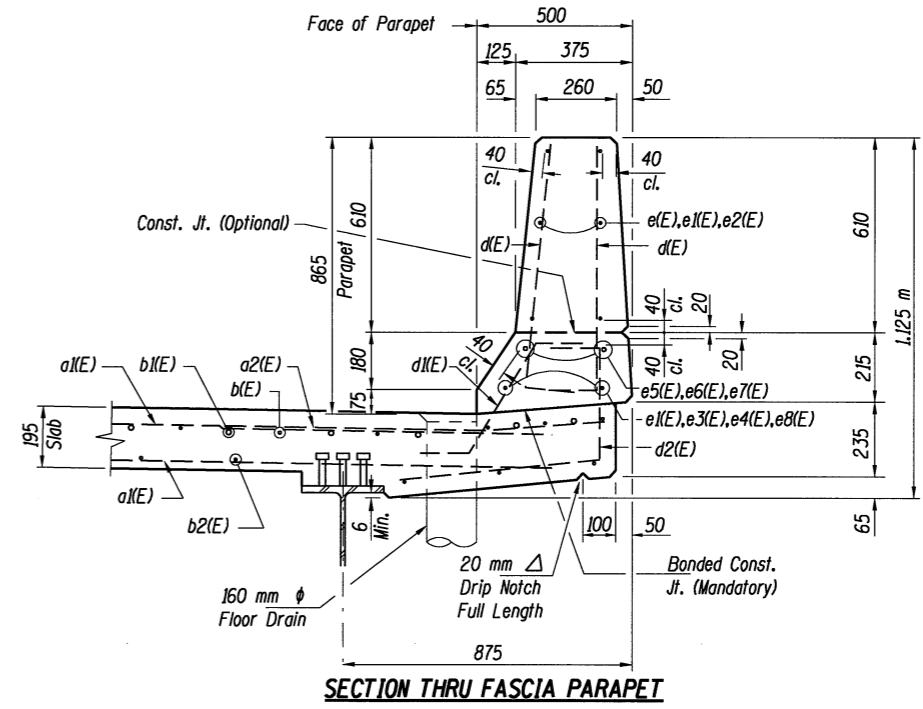
CROSS SECTION - NORTHBOUND  
(Looking Up-Station)

NEAR PIER

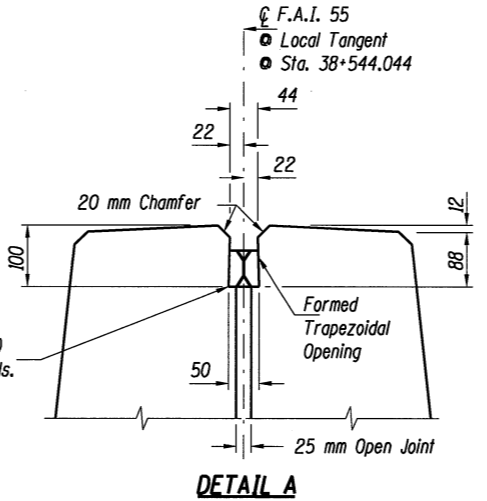
\* Radial Dimension



**SECTION THRU MEDIAN PARAPET**  
50 mm  $\phi$  Conduits shall only be placed in the curb portion of the parapet.



**SECTION THRU FASCIA PARAPET**



**DETAIL A**

**SUPERSTRUCTURE DETAILS - NORTHBOUND**  
**F.A.I. 55 OVER LINDEN STREET**  
**SECTION (57-4HB-3)BR**  
**STRUCTURE NO. 057-0235 (N.B.) & 057-0236 (S.B.)**  
**McLEAN COUNTY**  
**STATION 38+544.044**

© Copyright Hanson Professional Services Inc. 2003



JOB NO.	94S2063
DATE	03/26/04

LAYOUT	G.L.C.	11/5/97
DRAWN	D.A.N.	11/5/97
REVIEWED		11/7/97

\$TIME\$ 8/17/2009  
\$FILE\$