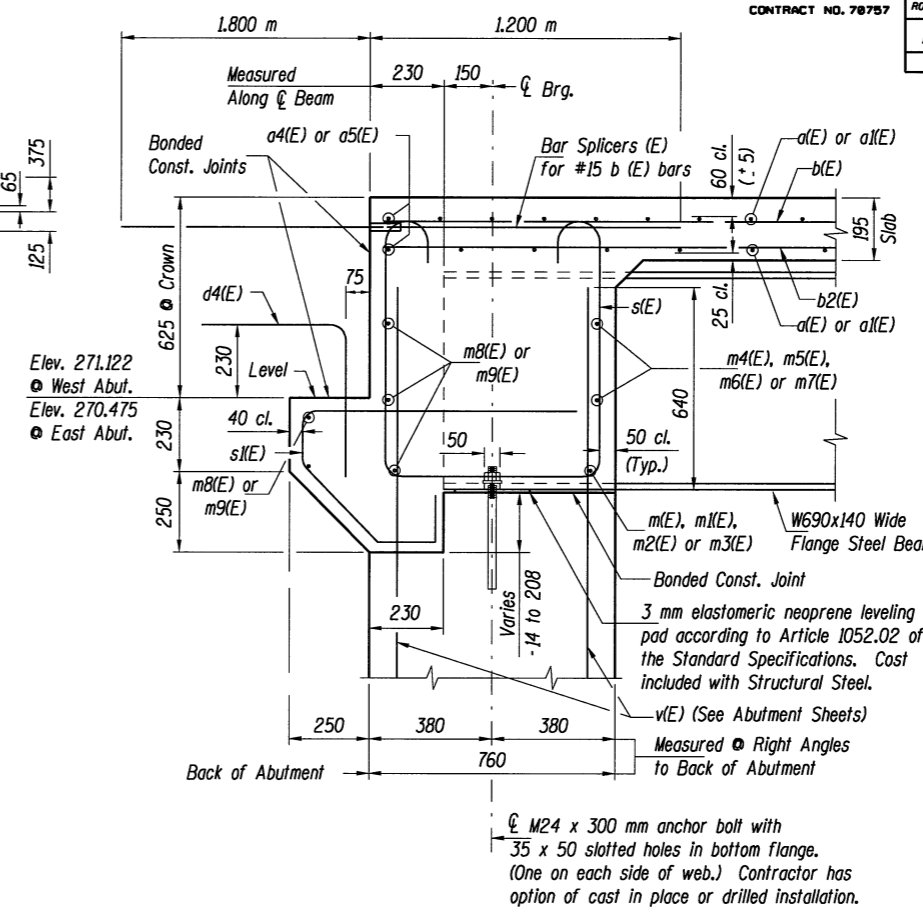


ROUTE NO.	SECTION	COUNTY	TOTAL SHEETS	SHEET NO.
1-55	(57-4HB-3)BR	McLean	310	212
FED. ROAD DIST. NO. 7		ILLINOIS PROJECT		

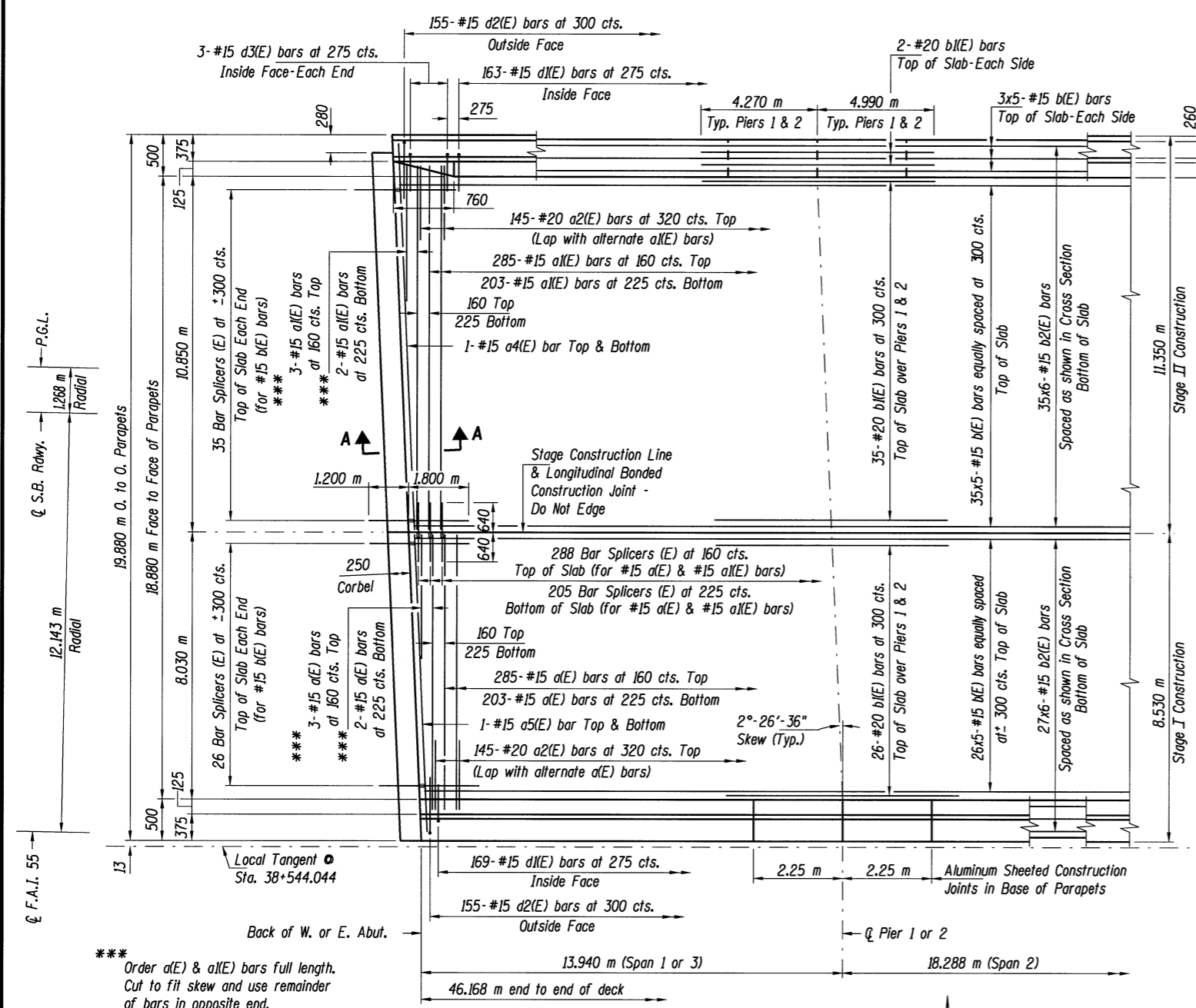
**BILL OF MATERIAL
SUPERSTRUCTURE - SOUTHBOUND**

Bar	No.	Size	Length (m)	Shape
a(E)	493	#15	8.14	—
a1(E)	493	#15	10.96	—
a2(E)	290	#20	1.20	—
a3(E)	8	#15	0.60	—
a4(E)	4	#15	11.12	—
a5(E)	4	#15	8.46	—
b(E)	335	#15	9.64	—
b1(E)	130	#15	9.26	—
b2(E)	372	#15	8.12	—
d(E)	648	#15	0.91	—
d1(E)	332	#15	0.73	—
d2(E)	310	#15	1.15	—
d3(E)	6	#15	0.82	—
d4(E)	134	#15	1.06	—
e(E)	72	#15	3.81	—
e1(E)	64	#15	2.17	—
e2(E)	36	#15	4.50	—
e3(E)	14	#15	6.06	—
e4(E)	8	#15	7.11	—
e5(E)	16	#25	2.17	—
e6(E)	16	#25	6.33	—
e7(E)	8	#25	7.38	—
e8(E)	2	#15	6.05	—
m(E)	4	#20	0.78	—
m1(E)	14	#20	2.16	—
m2(E)	2	#20	1.32	—
m3(E)	2	#20	0.76	—
m4(E)	8	#20	2.30	—
m5(E)	20	#20	2.90	—
m6(E)	4	#20	2.28	—
m7(E)	4	#20	2.82	—
m8(E)	10	#20	8.19	—
m9(E)	10	#20	10.96	—
s(E)	108	#15	2.51	—
s1(E)	124	#15	1.46	—
Concrete Superstructure			m ³	239.4
Reinforcement Bars			kg	32,920
Epoxy Coated				

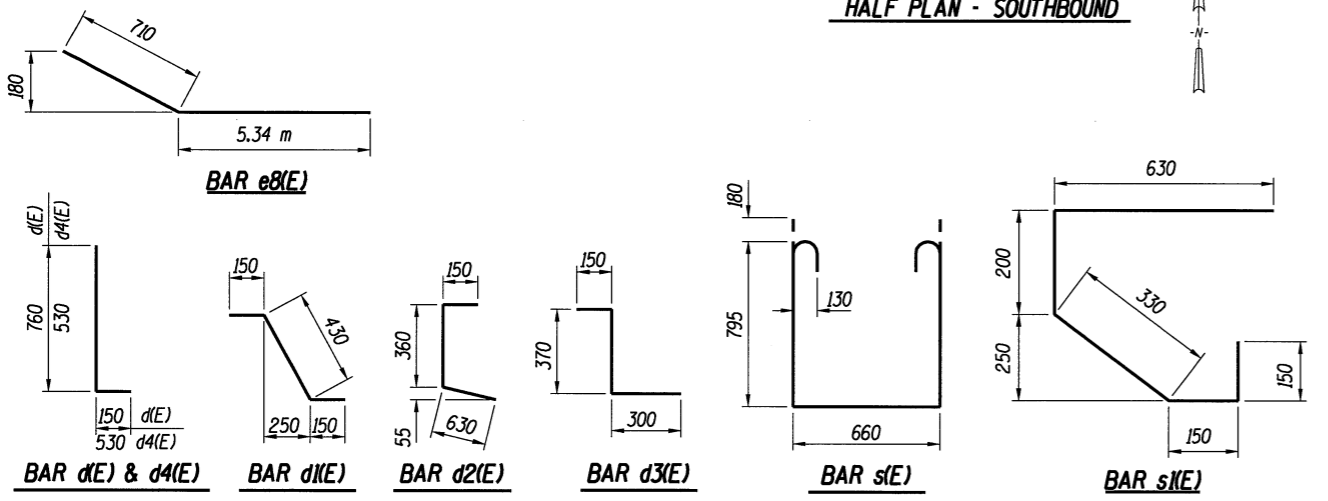


**SECTION A-A
AT ABUTMENT**

Concrete in Diaphragm is included with Concrete Superstructure.



HALF PLAN - SOUTHBOUND



NOTES:

- All dimensions are in millimeters (mm) except as noted.
- Reinforcement bars designated (E) shall be epoxy coated.
- Bars indicated thus: 20 x 3-#15 etc. indicates 20 lines of bars with 3 lengths per line.
- See General Plan & Elevation Sheet for location of drainage scuppers.
- Cut longitudinal reinforcement to clear drainage scuppers.

MINIMUM BAR LAPS
(Unless otherwise noted)
#15 Bars = 510 mm
#20 Bars = 640 mm

SUPERSTRUCTURE - SOUTHBOUND
F.A.I. 55 OVER LINDEN STREET
SECTION (57-4HB-3)BR
STRUCTURE NO. 057-0235 (N.B.) & 057-0236 (S.B.)
McLEAN COUNTY
STATION 38+544.044

© Copyright Hanson Professional Services Inc. 2003



JOB NO.
94S2063
DATE
03/26/04

\$TIME\$ 8/16/2009 \$FILE\$
 LAYOUT G.L.C. 11/5/97
 DRAWN D.A.W. 11/5/97
 REVIEWED * 11/7/97