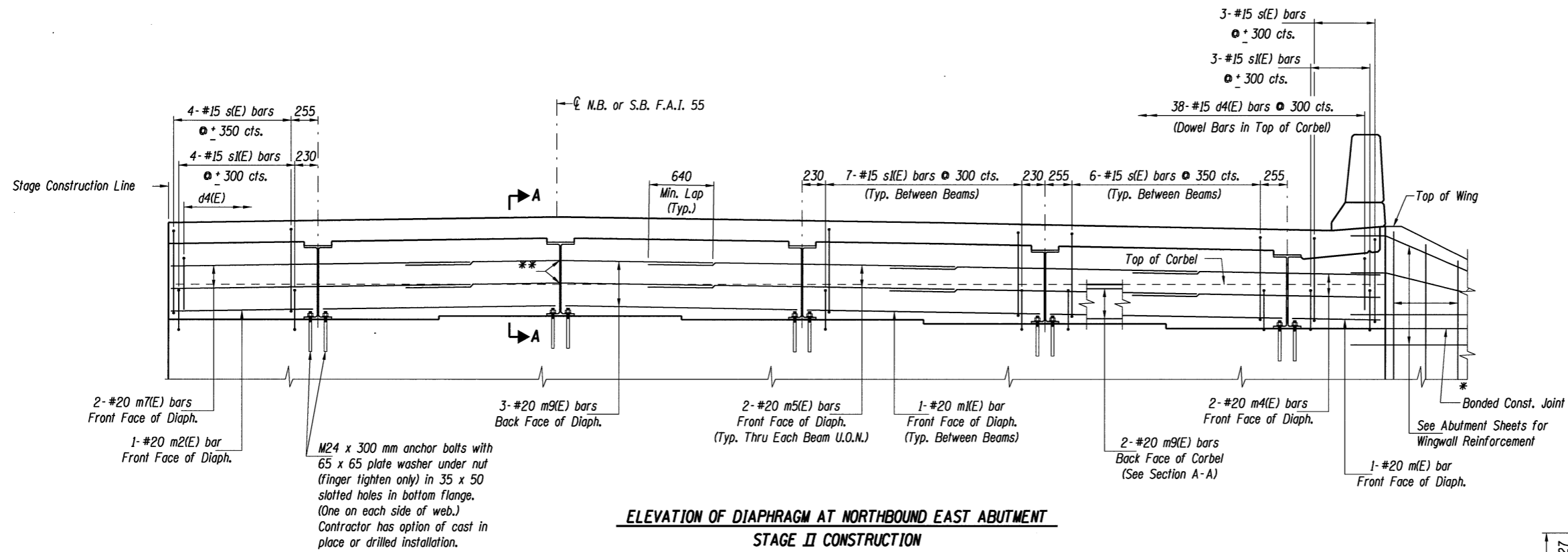


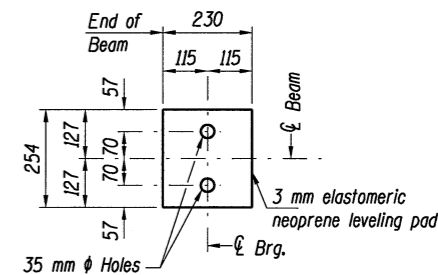
CONTRACT NO. 70757	ROUTE NO.	SECTION	COUNTY	TOTAL SHEETS	SHEET NO.
	1-55	(57-4HB-3)BR	McLean	310	214
	FED. ROAD DIST. NO. 7		ILLINOIS	PROJECT	

Sheet 14 of 31

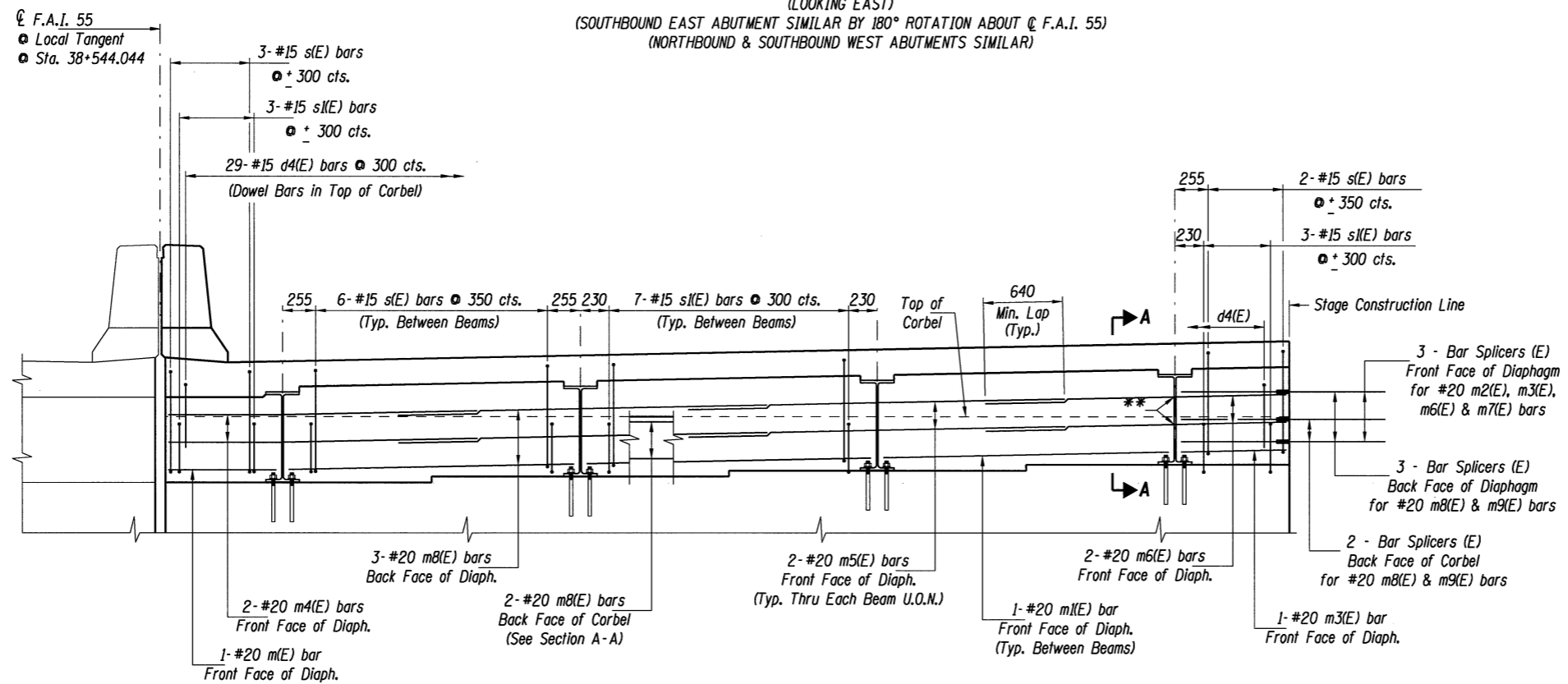


ELEVATION OF DIAPHRAGM AT NORTHBOUND EAST ABUTMENT
STAGE II CONSTRUCTION

(SHOWING REINFORCEMENT)
(LOOKING EAST)
(SOUTHBOUND EAST ABUTMENT SIMILAR BY 180° ROTATION ABOUT C.F.A.I. 55)
(NORTHBOUND & SOUTHBOUND WEST ABUTMENTS SIMILAR)



LEAD PLATE DETAIL



ELEVATION OF DIAPHRAGM AT NORTHBOUND EAST ABUTMENT
STAGE I CONSTRUCTION

(SHOWING REINFORCEMENT)
(LOOKING EAST)
(SOUTHBOUND EAST ABUTMENT SIMILAR BY 180° ROTATION ABOUT C.F.A.I. 55)
(NORTHBOUND & SOUTHBOUND WEST ABUTMENTS SIMILAR)

- NOTES:**
- Reinforcement bars designated (E) shall be epoxy coated.
 - All dimensions are in millimeters (mm) except as noted.
 - All dimensions are measured horizontally & along skew.
 - * Bonded Construction Joint.
 - ** 2-25 mm Dia. holes in beam web (Typ.) See Structural Steel Framing Plan for locations.
 - For Section A-A see Sheets 10 & 12 of 31.

MINIMUM BAR LAPS
#15 Bars = 510 mm
#20 Bars = 640 mm

SUPERSTRUCTURE DETAILS - (N.B. & S.B.)
F.A.I. 55 OVER LINDEN STREET
SECTION (57-4HB-3)BR
STRUCTURE NO. 057-0235 (N.B.) & 057-0236 (S.B.)
MCLEAN COUNTY
STATION 38+544.044

© Copyright Hanson Professional Services Inc. 2003



JOB NO.
94S2063
DATE
03/26/04

TIME \$
8/16/2009
DRAWN
REVIEWED

LAYOUT	G.L.C.	11/5/97
DRAWN	D.A.N.	11/5/97
REVIEWED		