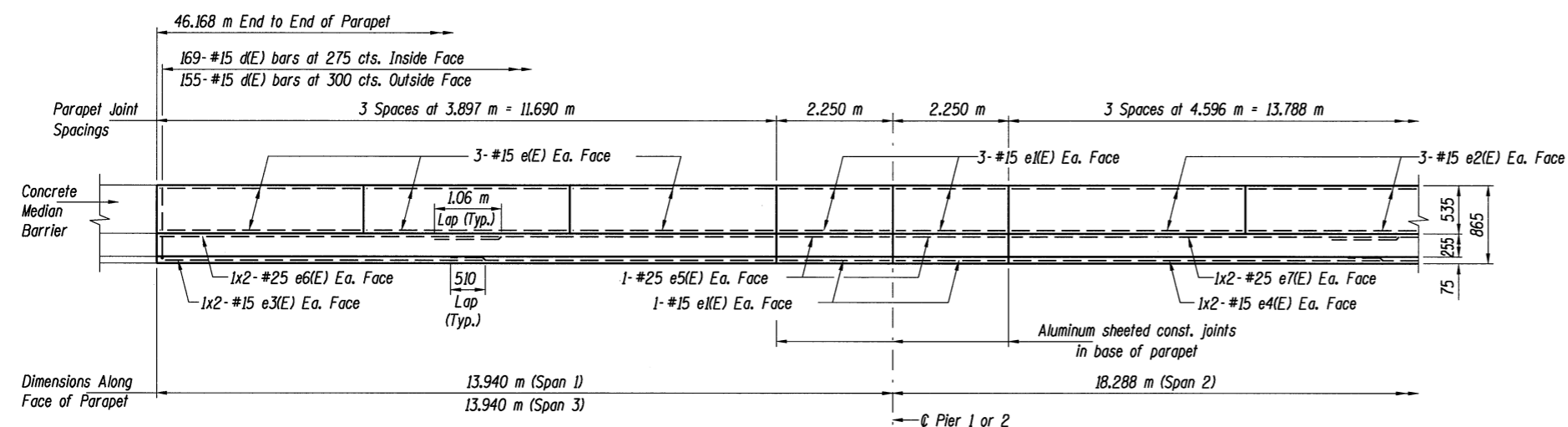
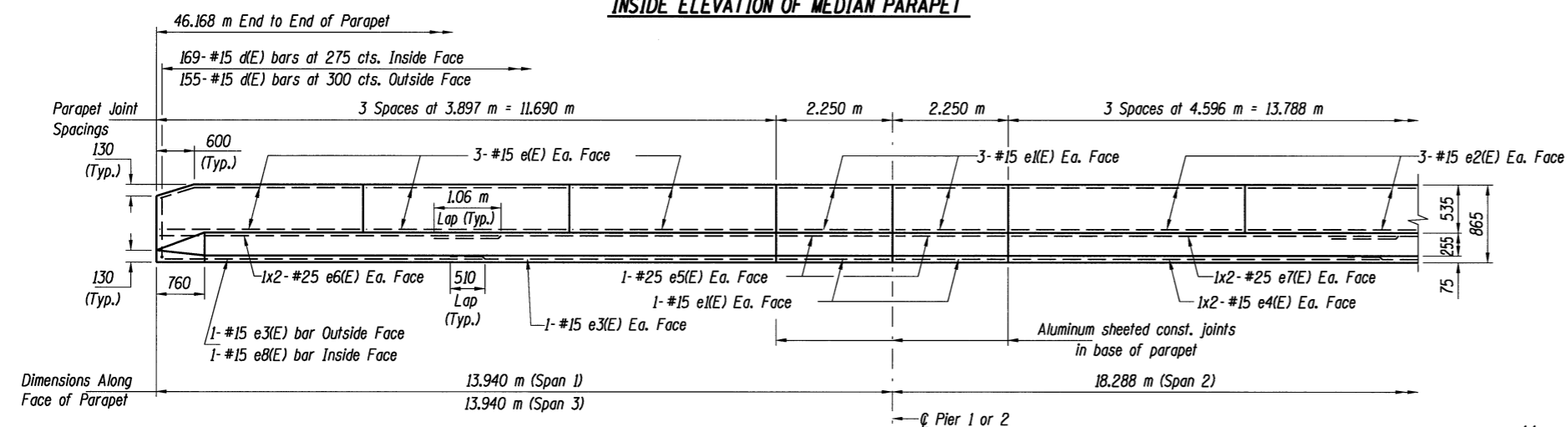


ROUTE NO.	SECTION	COUNTY	TOTAL SHEETS	SHEET NO.
I-55	(57-4HB-3)BR	McLean	310	215
FED. ROAD DIST. NO. 7		ILLINOIS PROJECT		

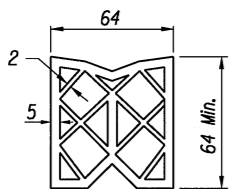
Sheet 15 of 31



INSIDE ELEVATION OF MEDIAN PARAPET



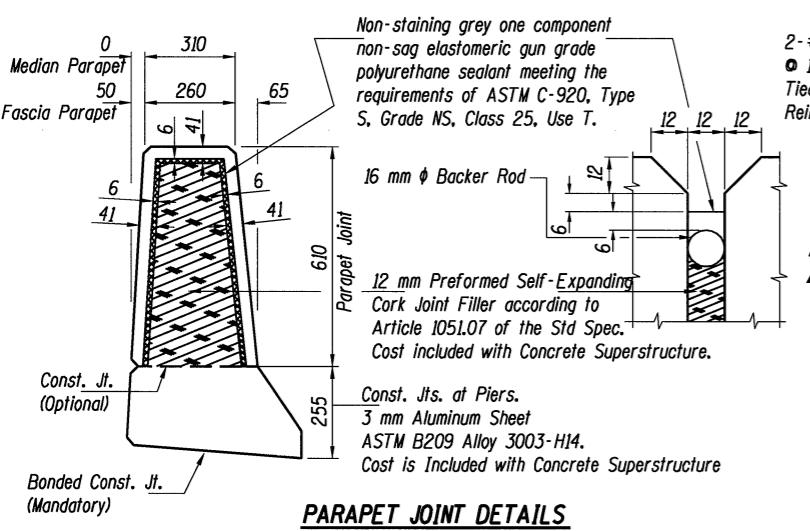
INSIDE ELEVATION OF FASCIA PARAPET



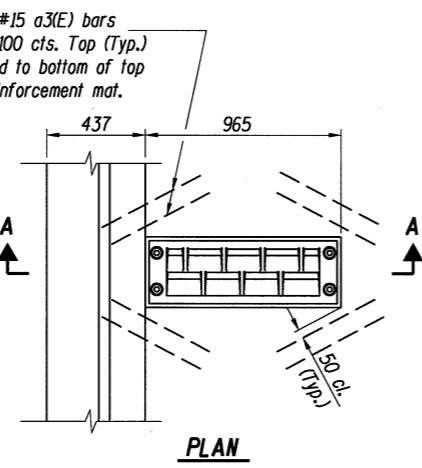
PREFORMED JOINT SEAL (64 mm)

MINIMUM BAR LAPS

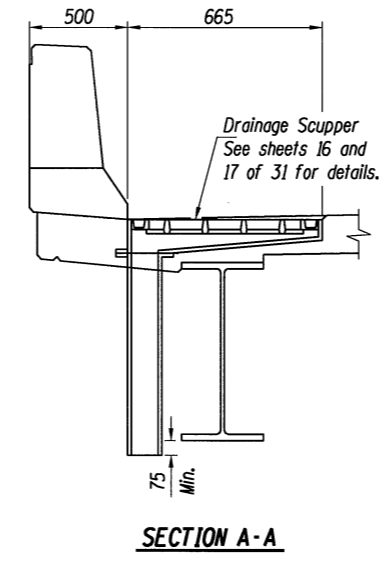
- #15 Bars = 510 mm
- #25 Bars = 1.060 m



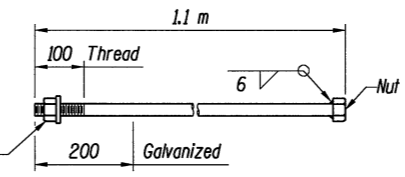
PARAPET JOINT DETAILS



DRAINAGE SCUPPER DETAILS

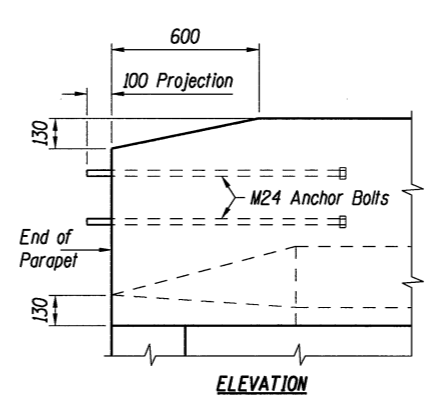


SECTION A-A



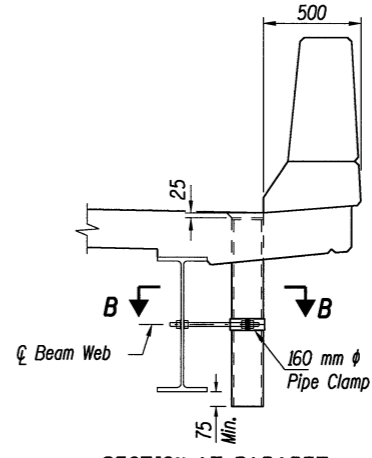
M24 ANCHOR BOLT

Cost of bolts to be included with Concrete Superstructure.

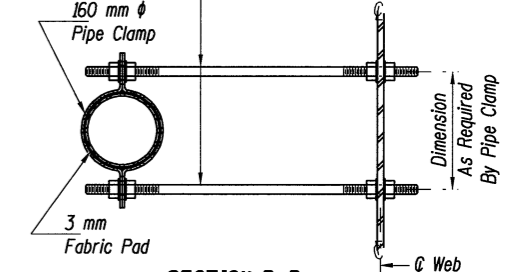


ANCHOR BOLT LOCATION

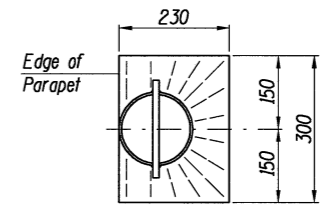
At S.E. corner of Northbound Bridge
At N.W. corner of Southbound Bridge



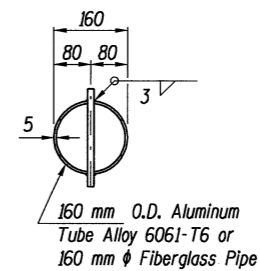
SECTION AT PARAPET



SECTION B-B

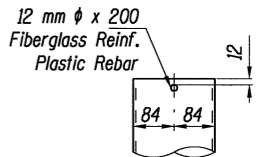


TOP PLAN

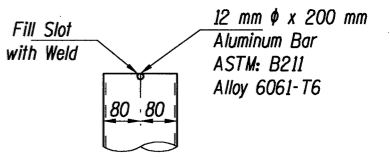


TOP PLAN

(Showing Aluminum Tube)



FIBERGLASS PIPE



ALUMINUM TUBE

FLOOR DRAIN DETAILS

Notes:

The exterior surfaces of the floor drains shall be painted with the finish coat as specified in the special provisions for Cleaning and Painting New Metal Structures. The exterior surfaces of the drain shall be cleaned according to Steel Structures Painting Council's Spec. SSPC-SPI & SSPC Paint 27 prior to painting. Fiberglass Pipe shall conform to ASTM D2996, with short-time rupture strength hoop tensile stress of 200 MPa minimum.

SUPERSTRUCTURE DETAILS - (N.B. & S.B.)
F.A.I. 55 OVER LINDEN STREET
SECTION (57-4HB-3)BR
STRUCTURE NO. 057-0235 (N.B.) & 057-0236 (S.B.)
MCLEAN COUNTY
STATION 38+544.044

© Copyright Hanson Professional Services Inc. 2003



JOB NO. 94S2063

DATE 03/26/04

\$TIME\$ 8/16/2009
 \$FILE\$
 LAYOUT G.L.C. 11/5/97
 DRAWN D.A.M. 11/5/97
 REVIEWED *** 11/97