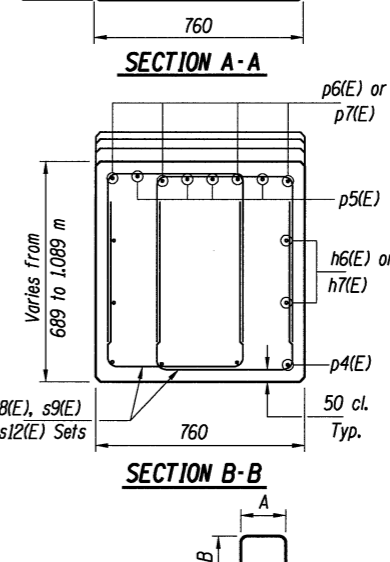
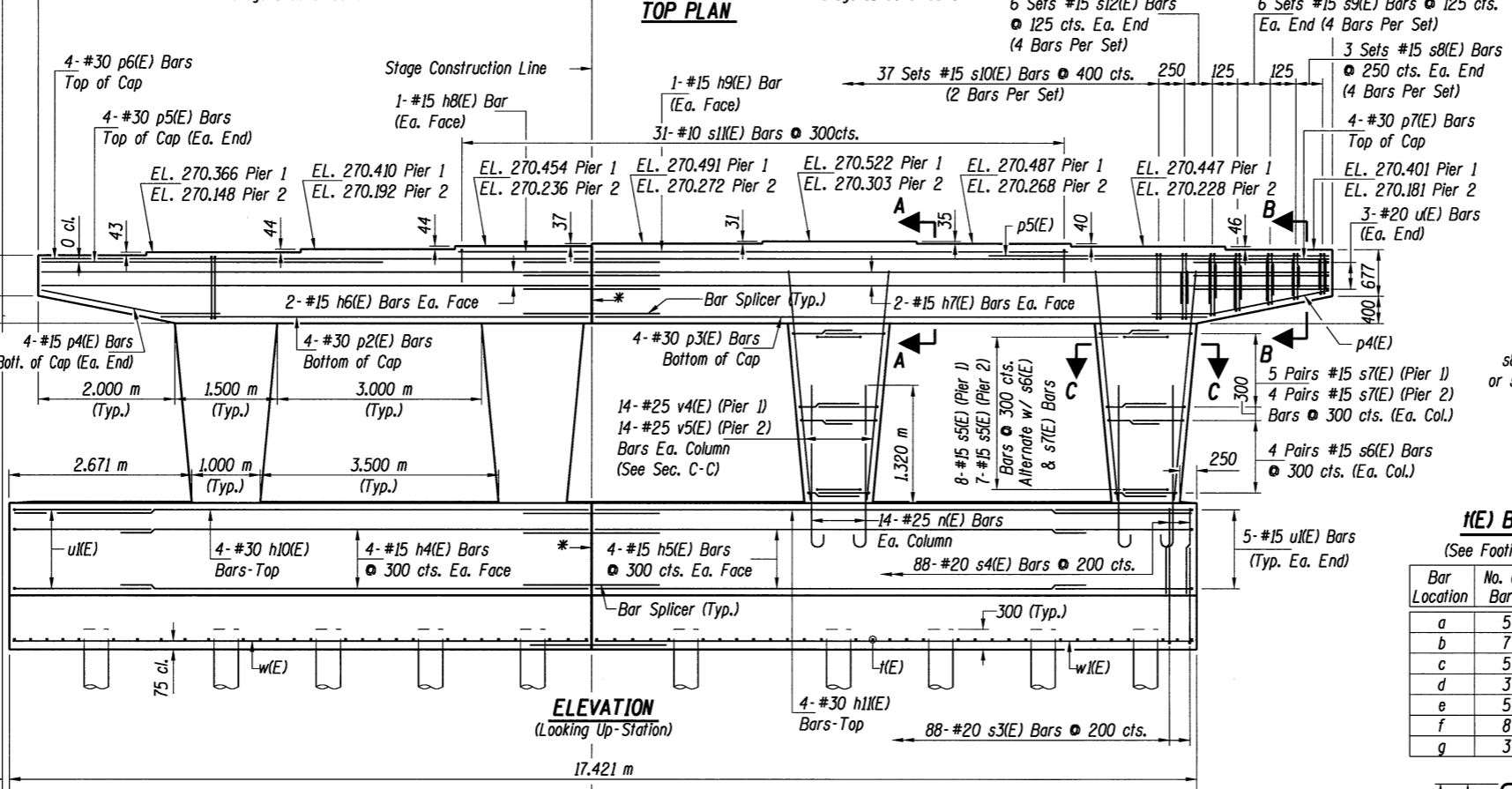
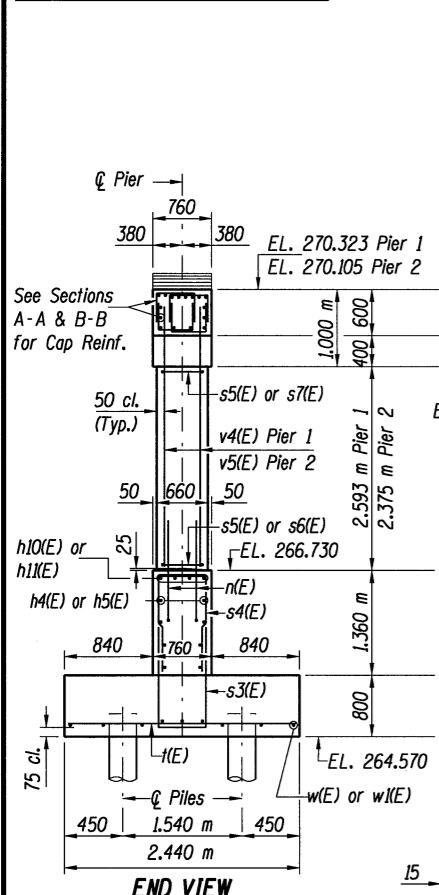


BILL OF MATERIAL
PIERS 1 & 2 - NORTHBOUND

Bar	No.	Size	Length (m)	Shape
h4(E)	16	#15	7.18	—
h5(E)	16	#15	7.53	—
h6(E)	8	#15	8.01	—
h7(E)	8	#15	10.78	—
h8(E)	4	#15	1.91	—
h9(E)	4	#15	6.94	—
h10(E)	8	#30	8.44	—
h11(E)	8	#30	8.79	—
n(E)	112	#25	2.22	C
p2(E)	8	#30	6.10	—
p3(E)	8	#30	8.88	—
p4(E)	16	#15	2.60	—
p5(E)	16	#30	5.00	—
p6(E)	8	#30	8.01	—
p7(E)	8	#30	10.78	—
s3(E)	176	#20	4.40	□
s4(E)	176	#20	3.22	□
s5(E)	120	#15	2.08	□
s6(E)	64	#15	2.32	□
s7(E)	144	#15	2.60	□
s8(E)	48	#15	1.46	□
s9(E)	96	#15	1.78	□
s10(E)	148	#15	3.00	□
s11(E)	62	#15	1.56	□
s12(E)	96	#15	2.04	□
t(E)	122	#25	2.34	—
u(E)	12	#20	4.56	□
u1(E)	20	#15	4.56	□
v4(E)	56	#25	3.21	—
v5(E)	56	#25	3.00	—
w(E)	18	#25	8.43	—
w1(E)	18	#25	8.78	—
Reinforcement Bars, Epoxy Coated	kg		14,260	
Concrete Structures	m³		150.2	
Structure Excavation	m³		210	
Furnishing Metal Shell	m		429	
Piles 305mm x 6.35mm	m		429	
Driving Piles	m		429	
Test Pile Metal Shells	Each		1	

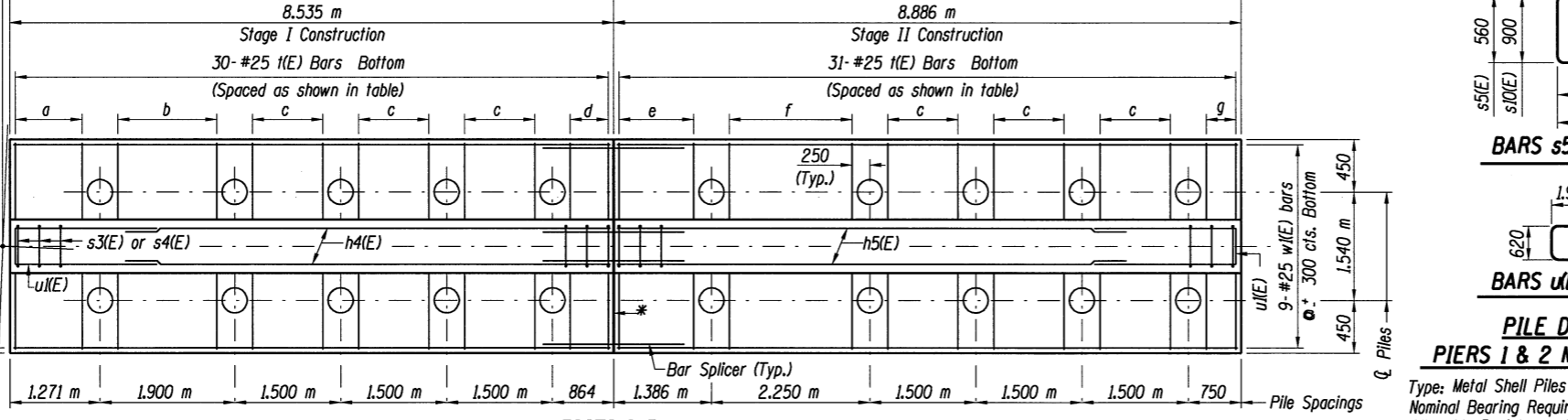
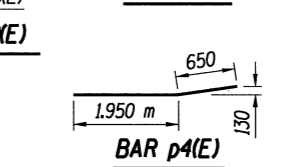
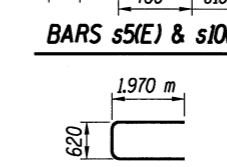
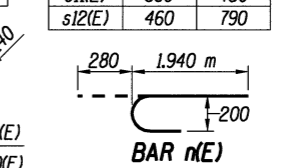
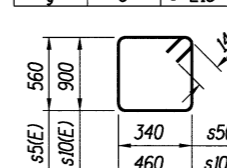


t(E) BARS
(See Footing Plan)

Bar Location	No. of Bars	Bar Spacing
a	5	+ 237
b	7	+ 233
c	5	250
d	3	+ 270
e	5	+ 265
f	8	250
g	3	+ 213

BARS s3(E), s4(E), s6(E), s7(E), s8(E), s9(E), s11(E) & s12(E)

Bar	A	B
s3(E)	660	1,870
s4(E)	660	1,280
s6(E)	560	880
s7(E)	560	1,020
s8(E)	460	500
s9(E)	460	660
s11(E)	660	450
s12(E)	460	790



MIN. BAR LAPS (Unless Otherwise Noted)

#15 Bars: 640

#20 Bars: 1,110 m

#25 Bars: 1,850 m

#30 Bars: 2,600 m

PILE DATA
PIERS 1 & 2 NORTHBOUND

Type: Metal Shell Piles 305 mm Dia. x 6.35 mm walls

Nominal Bearing Required: 1230 kN

Allowable Resistance Available: 410 kN

Est. Length: 11 m @ Pier 1

11 m @ Pier 2

No. Req'd.: 20 @ Pier 1 **

20 @ Pier 2 **

** Includes 1 Test Pile at Pier 2

- Notes:**
1. Cast steps monolithically with cap.
 2. All edges shall have standard 20 mm chamfers except as noted.
 3. All dimensions are in millimeters (mm) except as noted.
 4. Reinforcement bars designated (E) shall be Epoxy Coated.
 5. Space reinforcement in cap to miss anchor bolts.

* Bonded Construction Joint

● Stage Construction Line

PIERS 1 & 2 - NORTHBOUND
F.A.I. 55 OVER LINDEN STREET
SECTION (57-4HB-3)BR
STRUCTURE NO. 057-0235 (N.B.) & 057-0236 (S.B.)
McLEAN COUNTY
STATION 38+544.044

© Copyright Hanson Professional Services Inc. 2003

HANSON

94S2063

03/26/04

DATE: 11/5/97
DRAWN: D.A.N.
REVIEWED: [Signature]