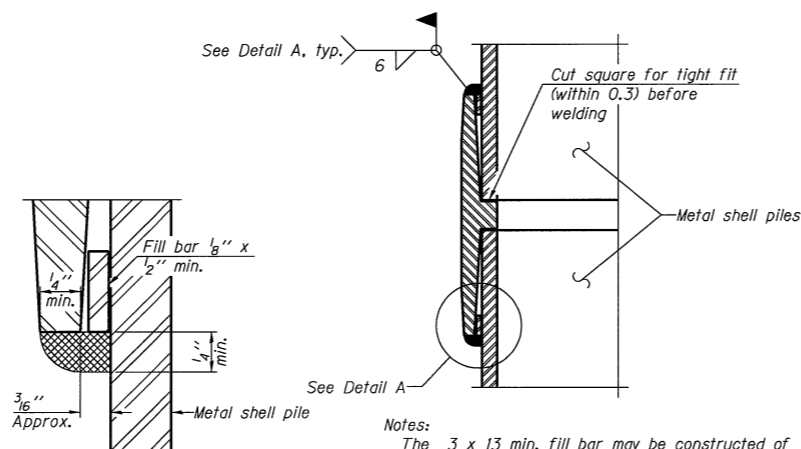




METAL SHELL PILE TABLE

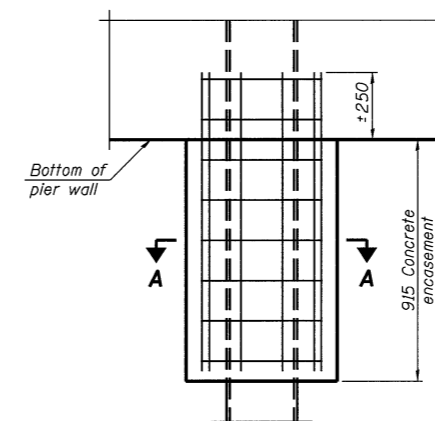
Designation and outside diameter	Wall thickness t	Weight per root (kg./m.)	Inside volume (m ³ /m)
PP305	4.55	330	0.0687
PP305	6.35	460	0.0690
PP356	6.35	535	0.0923
PP356	7.92	665	0.0906



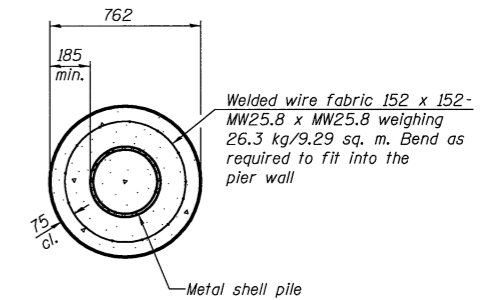
DETAIL A

Notes:
 The 3 x 13 min. fill bar may be constructed of 2 bars with a 3 max. gap between them.
 Pile segments shall be driven to solid contact with splicer before welding.

WELDED COMMERCIAL SPLICE



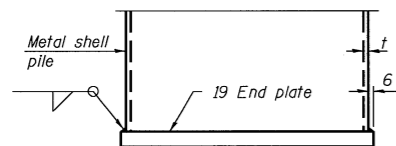
ELEVATION



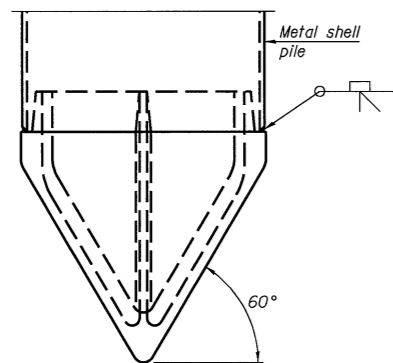
SECTION A-A

Note:
 Forms for encasement may be omitted when soil conditions permit.

CONCRETE ENCASEMENT AT PIERS



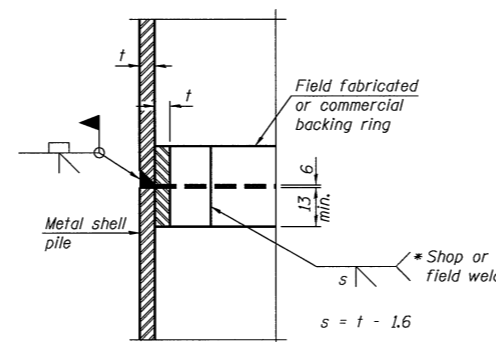
END PLATE ATTACHMENT



METAL SHELL PILE SHOE ATTACHMENT

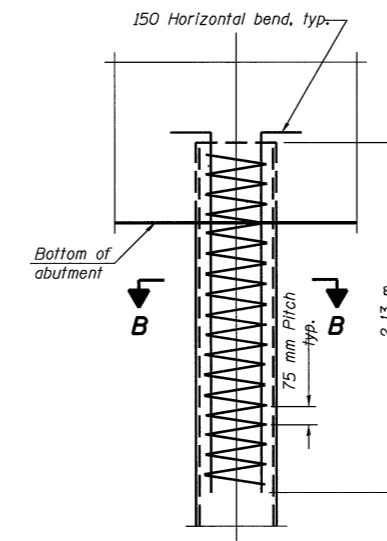
(See Note A)

Note A:
 When called for on the plans, the Contractor shall furnish metal shell pile shoes consisting of a single piece conical pile point as shown. The pile shoes shall be cast in one piece steel according to either ASTM A 148 Grade 90-60 or AASHTO M 103 Grade 65-35 and shall provide full bearing over the full circumference of the metal shell pile. The pile shoe shall have tapered leads to assure proper alignment and fitting and shall be secured to the pile with a circumferential weld.

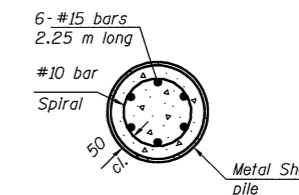


COMPLETE PENETRATION WELD SPLICE

* Field fabricated backing ring may be made from pile shell by removing segment to allow reducing circumference and vertically rejoin with partial joint penetration weld.



ELEVATION



SECTION B-B

METAL SHELL REINFORCEMENT AT ABUTMENTS

(All dimensions are in millimeters (mm) except as noted.)

METAL SHELL PILES AT ABUTMENTS
 F.A.I. 55 OVER LINDEN STREET
 SECTION (57-4HB-3)BR
 STRUCTURE NO. 057-0235 (N.B.) & 057-0236 (S.B.)
 McLEAN COUNTY
 STATION 38+544.044

© Copyright Hanson Professional Services Inc. 2003



JOB NO.
94S2063

DATE
03/26/04

DATE \$/TIME \$
8/16/2009 \$/FILE \$

LAYOUT	G.L.C.	11/5/97
DRAWN	D.A.N.	11/5/97
REVIEWED		

F-MS

10-1-08

Note:
 The metal shell piles shall be according to ASTM A 252 Grade 3.