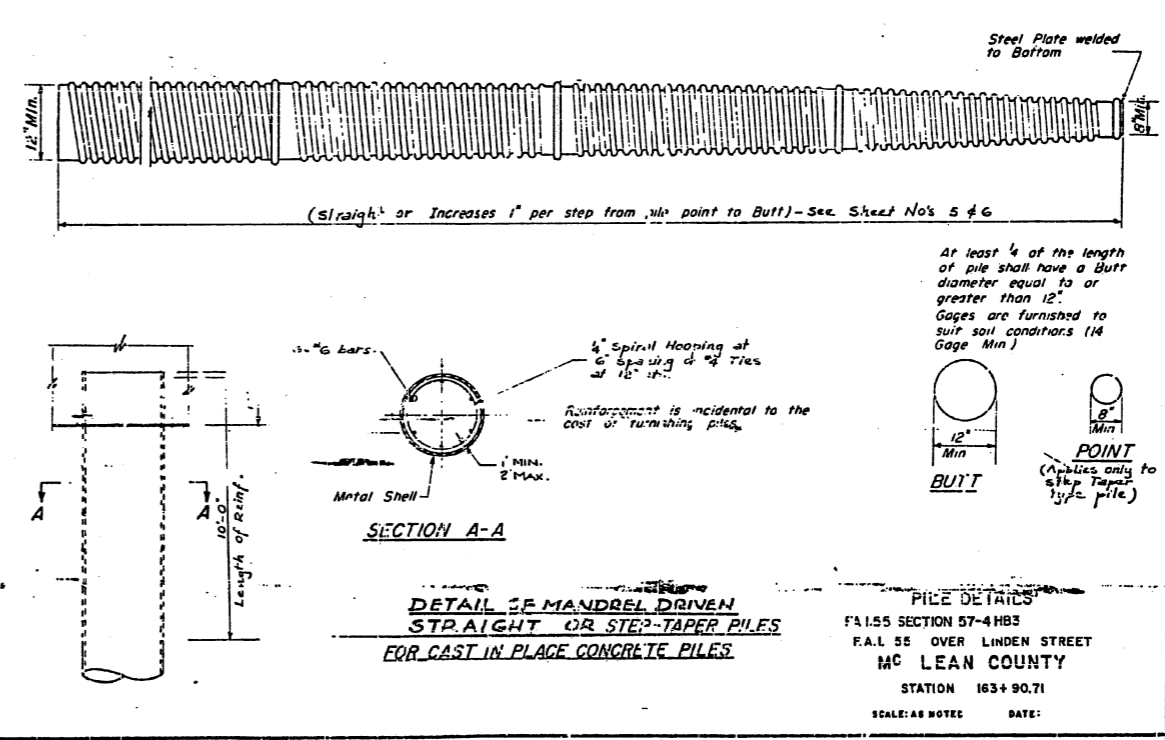
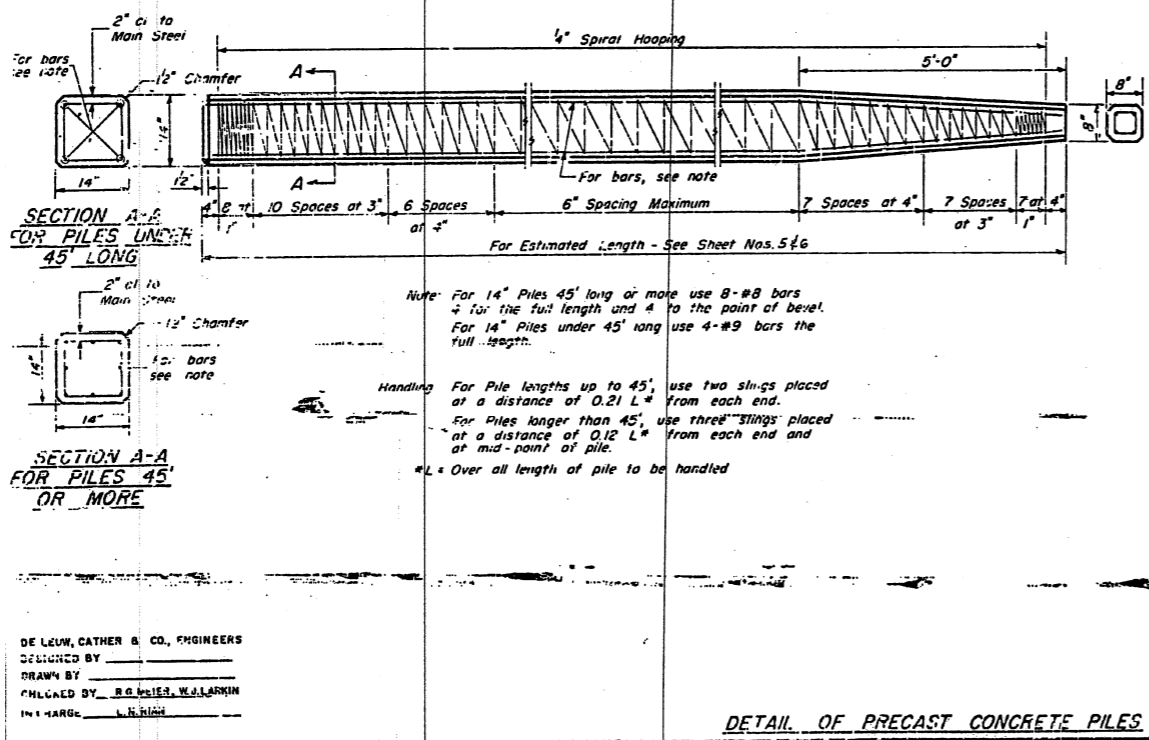
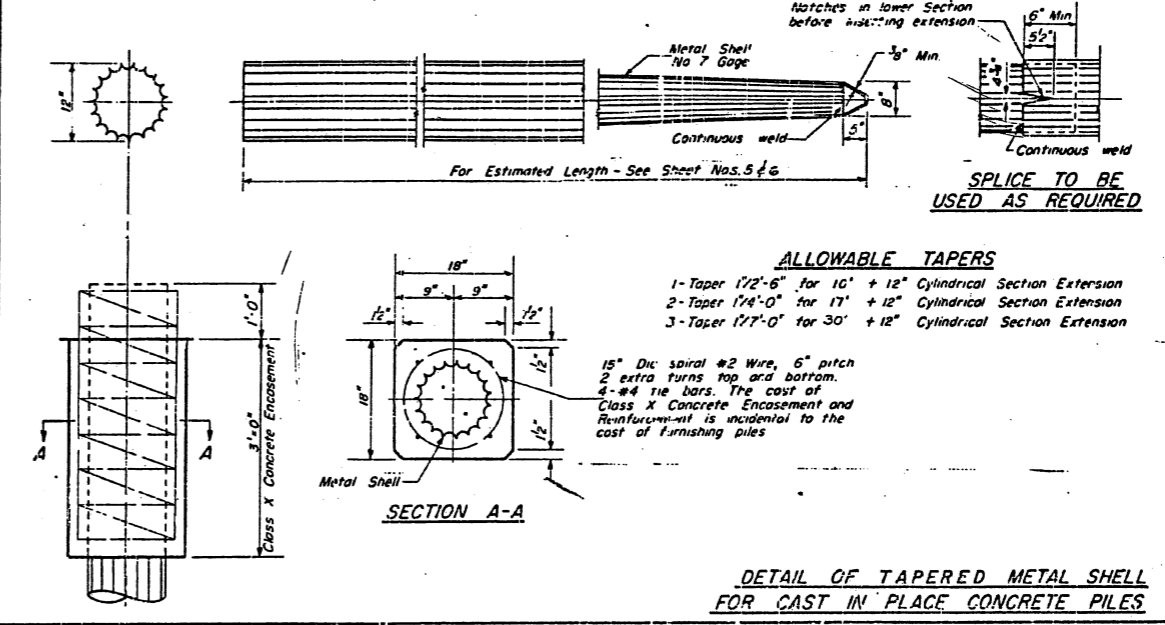
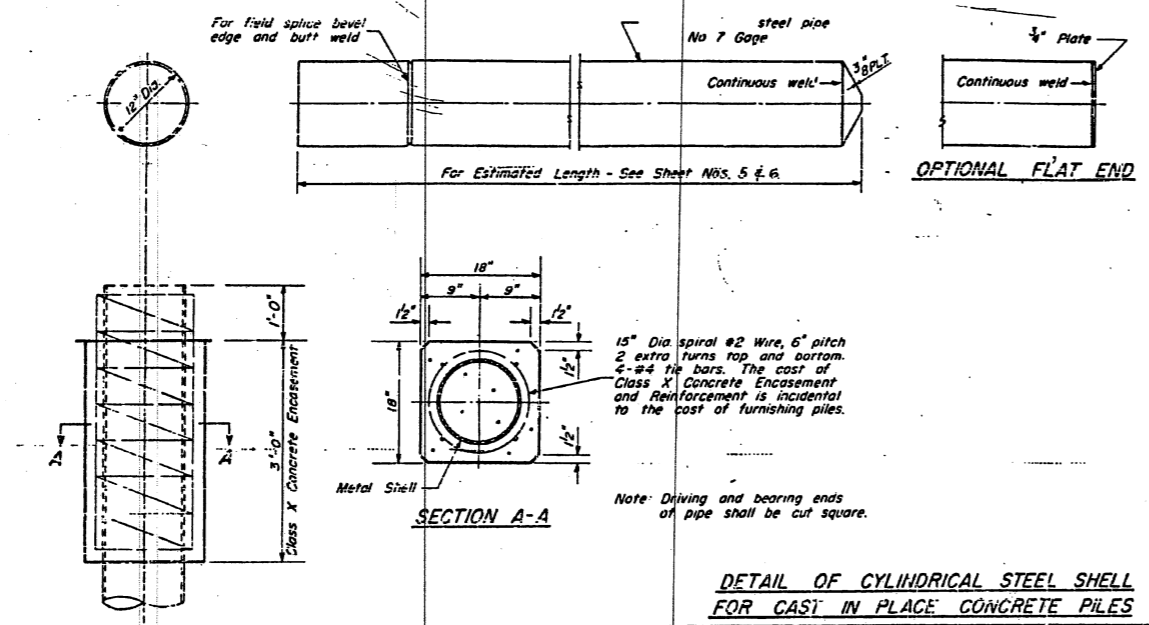


ROUTE NO.	SECTION	COUNTY	TOTAL SHEETS	SHEET NO.	SHEET NO. 3
F.A. 55	57-4HB3	MC LEAN	54	11	10 SHEETS
FEL. ROAD DIST. NO. (ILLINOIS) FED. AID PROJECT					



DE LEW, CATHY & CO., ENGINEERS
DESIGNED BY _____
DRAWN BY _____
CHECKED BY R.G. WILSON, W.L. LARKIN
IN CHARGE L.H. BROWN

FOR INFORMATION ONLY

EXISTING STRUCTURE PLANS
F.A.I. 55 OVER LINDEN STREET
SECTION (57-4HB-3)BR
STRUCT. NO. 057-0028 (N.B.) & 057-0029 (S.B.)
MCLEAN COUNTY
STATION 38+544.044

ST/MS 7/12/2009 \$FILES

LAYOUT	10/15/04
DESIGN	10/15/04
CHECK	10/15/04
REVIEWED	10/15/04

94S2063
DATE 10/15/04