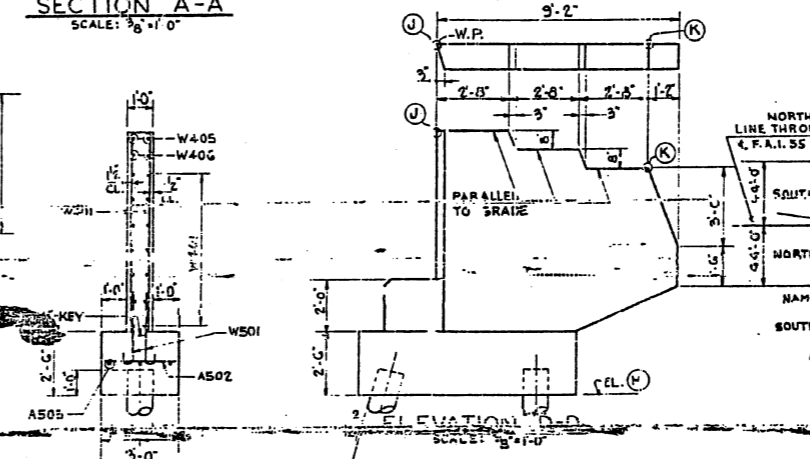
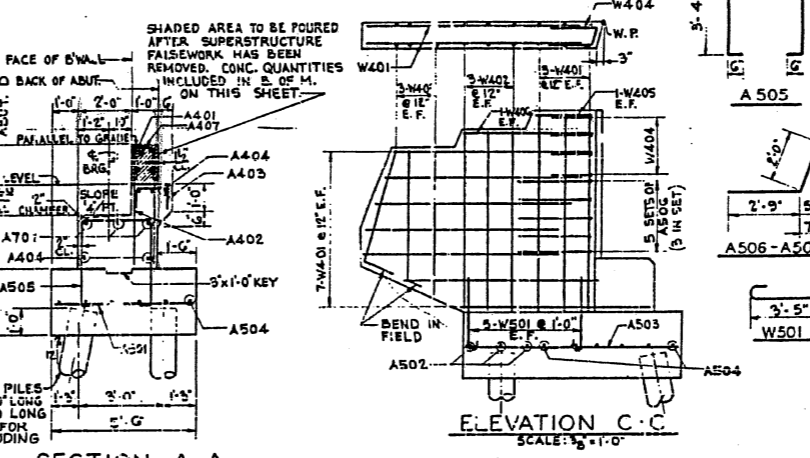
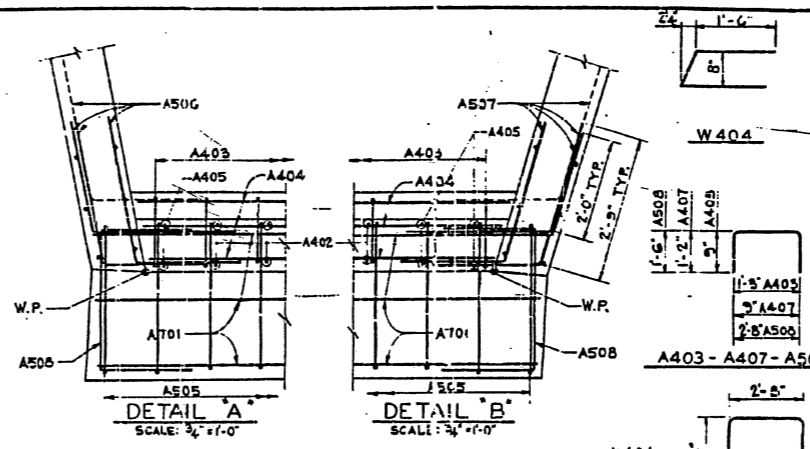


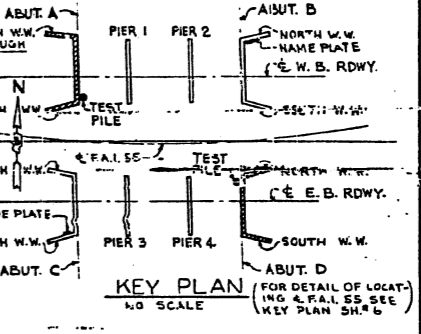
AT POINT	ABUT. A	ABUT. D
(A)	891.22	891.57
(B)	891.01	889.38
(C)	890.59	889.17
(D)	891.78	890.15
(E)	889.74	888.06
(F)	888.58	886.92
(G)	884.08	882.42



BAR LIST - 2 ABUTMENTS						
BAR	NO. ABUT. A	NO. ABUT. D	SIZE	LENGTH	SHAPE	WEIGHT
A401	8	8	4	20'-0"		214
A402	80	80	4	4		442
A403	43	43		2'-9"		158
A404	10	10		22'-3"		257
A405	6	6		4'-11"		39
A406	4	4		3'-0"		16
A407	40	40	1	3'-1"		105
A501	27	27	5	5'-0"		282
A502	6	6		2'-6"		31
A503	6	6		7'-9"		97
A504	12	12		24'-0"		601
A505	45	45		10'-4"		970
A506	15	15		4'-9"		149
A507	15	15		4'-9"		149
A508	4	4		5'-8"		47
A701	6	6	7	22'-7"		554
W401	40	40	1/2	7'-5"		396
W402	12	12		6'-8"		107
W403	12	12		5'-4"		66
W404	8	8		3'-6"		39
W405	4	4		2'-1"		11
W406	4	4		4'-9"		25
W501	20	20	5	4'-0"		167

NOTE: ALL BAR DIMENSIONS ARE CUT TO OUT.

BILL OF MATERIAL (2 ABUTS)		
ITEM	UNIT	QUANTITY
CLASS X CONCRETE	CU YD	95
REINFORCEMENT BARS	POUND	5045
FURNISHING CONC. PILES	LIN FT.	800
DRIVING CONC. PILES	LIN FT.	800
TEST PILES (CONCRETE)	EACH	2



ABUT.	WINGWALL	ELEVATION S	(D)	(E)
A	NORTH	894.24	891.00	
	SOUTH	894.28	891.04	
D	NORTH	892.45	891.19	
	SOUTH	892.56	891.10	

ABUTMENTS A & D  
F.A.I. 55 SECTION 57-4 HB3  
F.A.I. 55 OVER LINDEN STREET  
MCLEAN COUNTY  
STATION 163+90.71  
SCALE: AS NOTED DATE:

DE LEUK, CATHEN & CO. ENGINEERS  
DESIGNED BY: J. J. LEUK  
DRAWN BY: B. L. CATHEN  
CHECKED BY: W. J. LARKIN, REGISTERED  
IN CHARGE: L. N. RIAN

FOR INFORMATION ONLY

EXISTING STRUCTURE PLANS  
F.A.I. 55 OVER LINDEN STREET  
SECTION (57-4HB-3)BR  
STRUCT. NO. 057-0028 (N.B.) & 057-0029 (S.B.)  
MCLEAN COUNTY  
STATION 38+544.044

DATE: 7/17/2009  
FILE: 57-4HB-3

REVISED	DATE	BY

94S2063  
DATE: 10/15/04