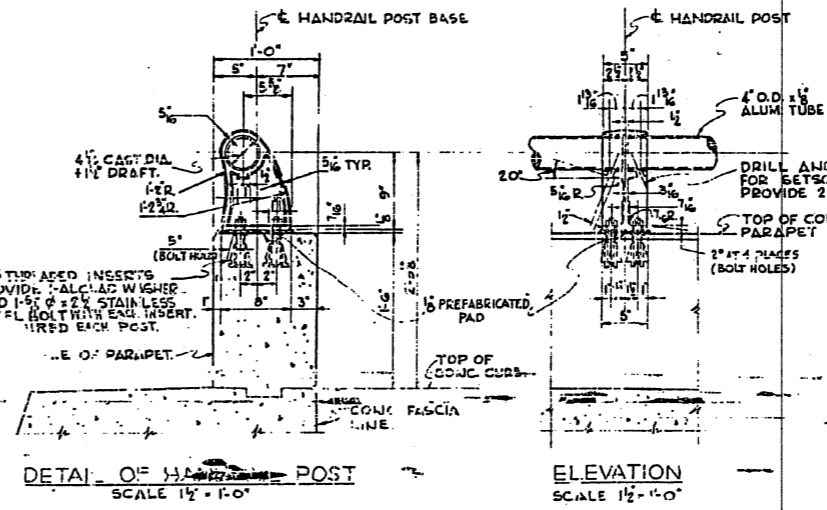
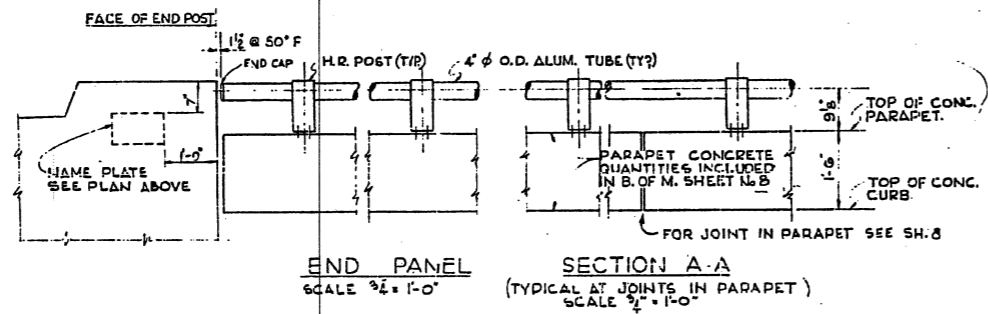
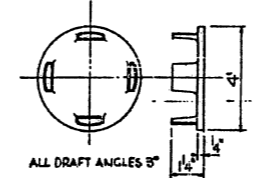
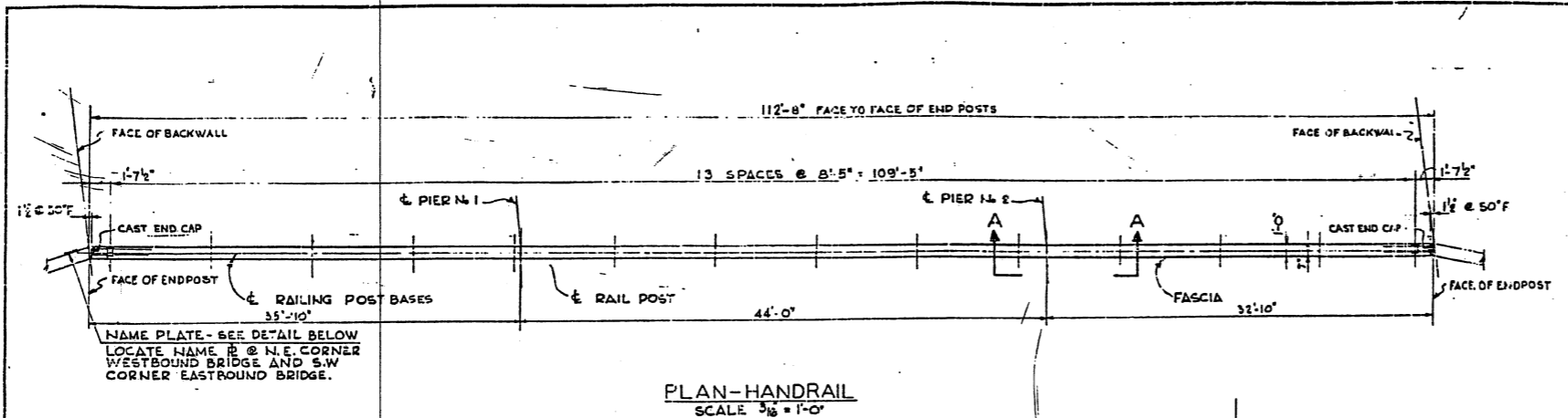


| SHEET NO. | SECTION | QUANTITY | TOTAL SHEETS | SHEET NO. | SHEET NO. 9 |
|-----------|---------|----------|--------------|-----------|-------------|
| FA.I.55 | 57-4 | MC, LEAN | 54 | 17 | 10 SHEETS |

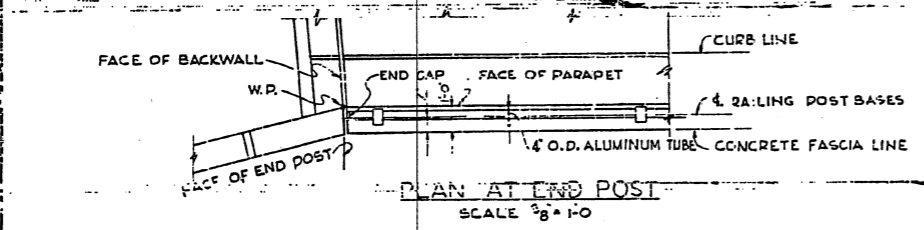
STATION 163+90.71
 BUILT 196 BY
 STATE OF ILLINOIS
 F.A.I. ROUTE 55 SEC. 57-4
 F.A. PROJECT I -55-4(1)
 LOADING H20-S16 & ALT.

SEE STANDARD NO. 2113
 LETTERING FOR NAME PLATE

| BILL OF MATERIAL | | |
|-------------------|----------|----------|
| 2 BRIDGES | | |
| ITEM | UNIT | QUANTITY |
| ALUMINUM HANDRAIL | LIN. FT. | 450 |



NOTES:
 ALL POSTS SHALL BE PLACED NORMAL TO PARAPET.
 ALL POSTS SHALL BE OF ALUMINUM CONFORMING TO ASTM SPECIFICATION B-211 ALLOY 6063-T6.
 ALL RAIL TUBING SHALL BE OF ALUMINUM CONFORMING TO ASTM SPECIFICATION B-215 ALLOY 6061-T6.
 ALCLAD WASHERS SHALL BE MADE FROM SHEET CONFORMING TO ASTM SPECIFICATION B-209 ALLOY CLAD CG-42A-T4.
 RAIL TUBING LENGTHS MAY EXTEND A MAXIMUM OF 3 PANELS.
 FOR MATERIAL COMPOSITION OF PREFABRICATED PAD, SEE ART. 54.9, (f), (BEARINGS AND ANCHORAGE), OF THE STD. SPECS.
 SET SCREWS SHALL BE OF ALUMINUM CONFORMING TO ASTM SPECIFICATION B-211 ALLOY 6063-T6.



DR. LEW CATHER & CO. ENGINEERS
 DESIGNED BY J. J. GARCIA
 DRAWN BY S. J. GARDNER, W. L. HARRIS
 IN CHARGE E. L. N. PRAN

HANDRAILS & MISCELLANEOUS DETAILS
 F.A.I. 55 SECTION 57-4HB3
 F.A.I. 55 OVER LINDEN STREET
 MCLEAN COUNTY
 STATION 163+90.71
 SCALE: AS NOTED DATE:

FOR INFORMATION ONLY

EXISTING STRUCTURE PLANS
 F.A.I. 55 OVER LINDEN STREET
 SECTION (57-4HB-3)BR
 STRUCT. NO. 057-0028 (N.B.) & 057-0029 (S.B.)
 MCLEAN COUNTY
 STATION 38+544.044

94S2063
 DATE 10/15/04

TIME \$ 7/12/2009 \$FILE \$
 LAYOUT 10/15/04
 DRAWN 10/15/04
 REVIEWED 10/15/04