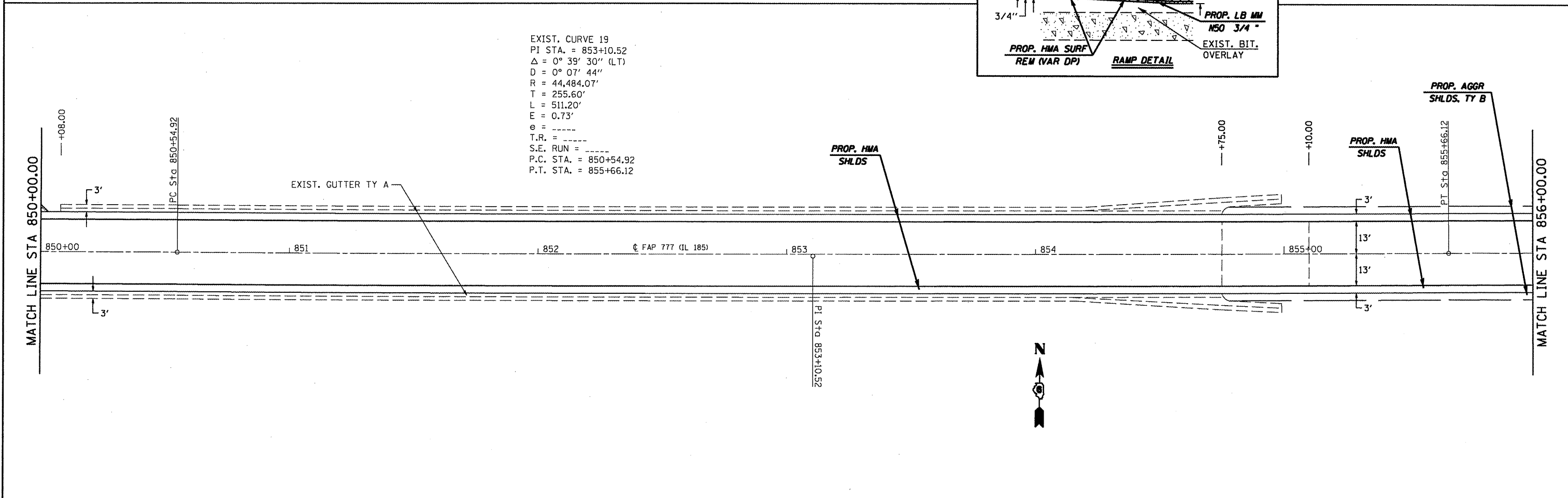


EXIST. CURVE 19
 PI STA. = 853+10.52
 $\Delta = 0^\circ 39' 30''$ (LT)
 $D = 0^\circ 07' 44''$
 $R = 44,484.07'$
 $T = 255.60'$
 $L = 511.20'$
 $E = 0.73'$
 $\theta =$
 $T.R. =$
 $S.E. RUN =$
 P.C. STA. = 850+54.92
 P.T. STA. = 855+66.12



FILE NAME =	USER NAME = coxjw	DESIGNED - JWC	REVISED -	STATE OF ILLINOIS DEPARTMENT OF TRANSPORTATION	PLAN SHEETS		F.A.P. RTE. = 777	SECTION = IORS-5	COUNTY = Montgomery	TOTAL SHEETS = 54	SHEET NO. = 45	
ct:\pwwork\pwwid\COXJW\dms22861\0672068-shr-plan21.dgn		DRAWN - JWC	REVISED -		SCALE: 20	SHEET NO. 26 OF 27 SHEETS	STA. 844+00.00 TO STA. 856+00.00	CONTRACT NO. 72A68				
PLOT SCALE = 48.0000' / IN.		CHECKED - RSC	REVISED -		[ILLINOIS] FED. AID PROJECT							
PLOT DATE = Aug-13-2009 10:31:30AM		DATE - 7/10/09	REVISED -									