

PROJECT MANAGER: SAL MADONIA (217) 782-4761

SQUAD LEADER: KEN ANDERSON (217) 524-7546

INDEX OF SHEETS

- 1 COVER SHEET, INDEX OF SHEETS & STANDARDS
- 2 GENERAL NOTES & COMMITMENTS
- 3-4 SUMMARY OF QUANTITIES
- 5 TYPICAL SECTIONS
- 6-8 SCHEDULE OF QUANTITIES
- 9 ALIGNMENT, TIES, AND BENCHMARKS
- 10 PLAN & PROFILE SHEET
- 11 MAINTENANCE OF TRAFFIC DETAIL
- 12 EROSION CONTROL PLAN
- 13-14 PROPOSED CULVERT PLAN
- 15 BORING LOG
- 16 BUTT JOINT DETAIL
- 17-20 CROSS SECTIONS

STATE STANDARDS

- 000001-05
- 001001-02
- 001006
- 280001-04
- 630001-08
- 630301-05
- 635006-03
- 635011-02
- 701006-03
- 701901-01
- 780001-02
- BLR 21-8

ALIGNMENT, TIES, AND BENCHMARKS



PLAN & PROFILE SHEET



EROSION CONTROL PLAN



CROSS SECTIONS



FULL SIZE PLANS HAVE BEEN PREPARED USING STANDARD ENGINEERING SCALES. REDUCED SIZED PLANS WILL NOT CONFORM TO STANDARD SCALES. IN MAKING MEASUREMENTS ON REDUCED PLANS, THE ABOVE SCALES MAY BE USED.

J.U.L.I.E. JOINT UTILITY LOCATION INFORMATION FOR EXCAVATION 1-800-892-0123

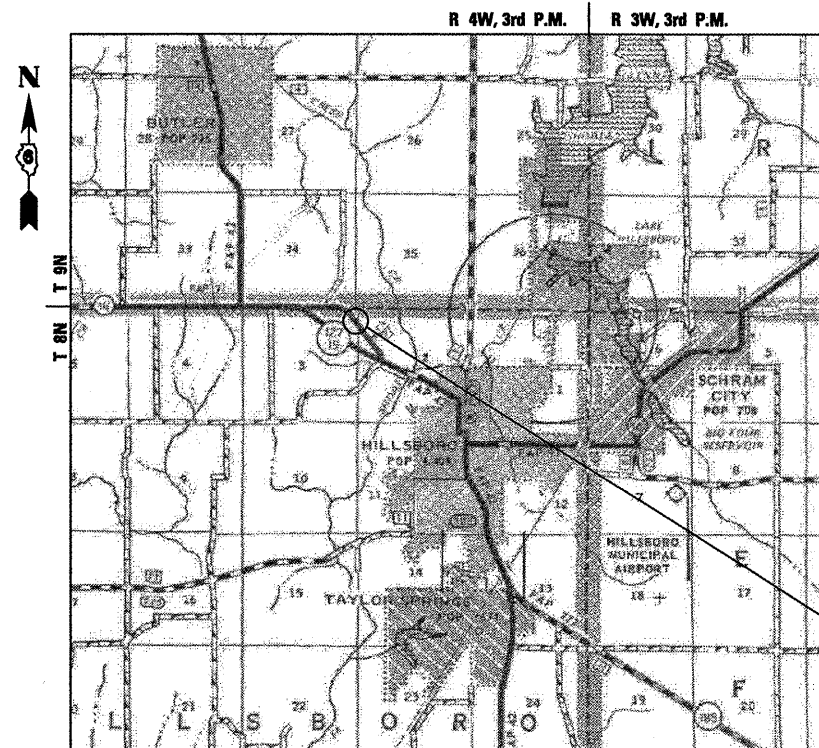
HILLSBORO TOWNSHIP, SECTIONS 2 & 3

ADT: 100(2008); 125(2030)
SU: 1.5%
MU: 0.5%

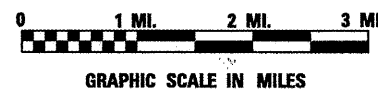
CONTRACT NO. 72B73

STATE OF ILLINOIS
DEPARTMENT OF TRANSPORTATION
DIVISION OF HIGHWAYS
**PROPOSED
HIGHWAY PLANS**

SBI ROUTE 16A (GRESS CIRCLE)
SECTION (21[FR#1])ACB
PROJECT NO. ACRS-0135 (040)
MONTGOMERY COUNTY
C-96-033-08



LOCATION MAP



GROSS LENGTH OF IMPROVEMENT = 65.0 FEET = 0.012 MILE
NET LENGTH OF IMPROVEMENT = 65.0 FEET = 0.012 MILE

DESCRIPTION OF WORK:

THIS PROJECT CONSISTS OF THE REMOVAL OF THE EXISTING SINGLE BARREL BOX CULVERT, S.N. 068-7030 (EX.), WITH PROPOSED 6' x 8' SINGLE BARREL BOX CULVERT, S.N. 068-7059 (PR.), CARRYING SBI ROUTE 16A OVER UNNAMED DITCH. GUARDRAIL REPLACEMENT AND APPROACH ROADWAY IMPROVEMENTS ARE ALSO INCLUDED.

PROPOSED IMPROVEMENTS:

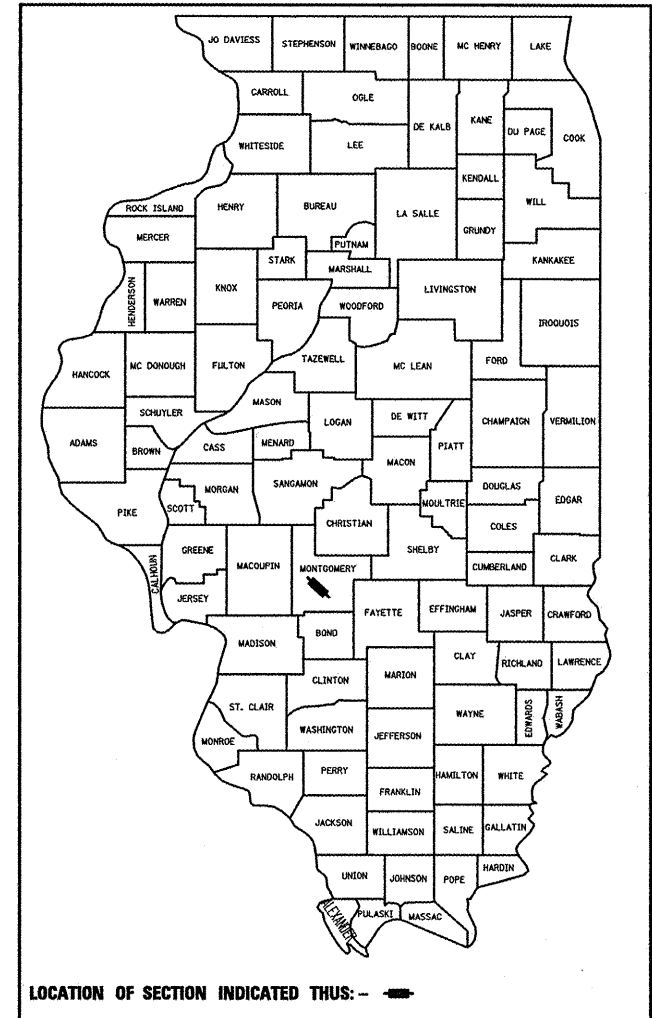
STATION 56+25.00 TO
STATION 56+90.00



SEAL

F.A. RTE.	SECTION	COUNTY	TOTAL SHEETS	SHEET NO.
	(21[FR#1])ACB	MONTGOMERY	20	1
FED. ROAD DIST. NO.	ILLINOIS	CONTRACT NO. 72B73		

D-96-033-08



LOCATION OF SECTION INDICATED THIS: -



PREPARED BY:
LIN ENGINEERING, LTD.
WESTMONT, ILLINOIS 60559
(630) 323-5168

Fred M. Lin

FRED M. LIN, P.E.
ILLINOIS REGISTERED ENGINEER NO. 062-056704
REGISTRATION EXPIRES NOV. 30, 2009

STATE OF ILLINOIS
DEPARTMENT OF TRANSPORTATION
DIVISION OF HIGHWAYS

SUBMITTED *July 23* 20 *09*

Roger Z. Orskell
DEPUTY DIRECTOR OF HIGHWAYS, REGION ENGINEER

October 2, 2009
Charles J. Ingersoll
ENGINEER OF DESIGN AND ENVIRONMENT

October 2, 2009
Christine M. Reed
DIRECTOR OF HIGHWAYS, CHIEF ENGINEER

PRINTED BY THE AUTHORITY
OF THE STATE OF ILLINOIS

GENERAL NOTES

THE ENGINEER WILL BE THE SOLE JUDGE CONCERNING CURING TIME FOR THE VARIOUS HMA LIFTS.

AT ALL LOCATIONS WHERE THE PROPOSED HOT MIX ASPHALT JOINS THE EXISTING HOT MIX ASPHALT OR CONCRETE PAVEMENT, A FULL DEPTH SAWED JOINT SHALL BE CONSTRUCTED. THE COST OF SAW CUTS AND JOINTS IS CONSIDERED AS INCLUDED IN THE COST OF THE TYPE OF PAVEMENT BEING CONSTRUCTED.

THE CONTRACTOR SHALL VERIFY ALL DIMENSIONS AND CONDITIONS IN THE FIELD PRIOR TO CONSTRUCTION AND ORDERING OF MATERIALS.

THE CONTRACTOR SHALL CONSULT WITH THE ENGINEER IN REGARD TO THE EXACT LENGTH OF THE BOX CULVERT REQUIRED PRIOR TO ORDERING THIS ITEM.

THE CONTRACTOR SHALL REMOVE OR RELOCATE ALL CONFLICTING MAILBOXES, EXISTING STREET NAME SIGNS, AND ALL PRIVATE AND COMMERCIAL SIGNS IN ACCORDANCE WITH ARTICLES 107.20 & 107.25 AND AS DIRECTED BY THE ENGINEER. SIGN LOCATIONS MAY BE ADJUSTED IN THE FIELD TO AVOID ANY FOUND UTILITIES AND AS DIRECTED BY THE ENGINEER. THIS WORK SHALL BE CONSIDERED AS INCLUDED IN THE COST OF EARTH EXCAVATION. ALL WOOD POST LOCATIONS SHALL BE VERIFIED WITH THE BUREAU OF OPERATIONS, TRAFFIC SECTION, BEFORE INSTALLATION.

EXISTING FENCES SHALL BE REMOVED UP TO THE LIMITS AS SHOWN IN THE PLANS. EXISTING TIMBER VEGETATION SHALL BE REMOVED UP TO CONSTRUCTION LIMITS. THIS WORK SHALL BE CONSIDERED AS INCLUDED IN THE COST OF EARTH EXCAVATION.

BITUMINOUS AND AGGREGATE PRIME COAT SHALL BE PLACED IN ACCORDANCE WITH SECTION 406 OF THE STANDARD SPECIFICATIONS.

THE NEW NUMBER FOR THIS STRUCTURE SHALL BE S.N. 068-7059.

THE CONTRACTOR SHALL SUBMIT FOUR COPIES OF THE REQUIRED SHOP DRAWINGS FOR REVIEW AND APPROVAL TO THE BUREAU OF BRIDGES AND STRUCTURES, 2300 SOUTH DIRKSEN PARKWAY, SPRINGFIELD, IL, 62764. AFTER APPROVAL OF INITIAL SUBMITTAL, THE CONTRACTOR SHALL SUBMIT ONE SET OF SHOP DRAWINGS TO DAVE LIPPERT, ENGINEER OF MATERIALS, 126 EAST ASH STREET, SPRINGFIELD, IL, 62706 AND EIGHT (8) SETS OF SHOP DRAWINGS TO BE DISTRIBUTED TO:

- DISTRICT 6 DISTRICT ENGINEER (1)
- FABRICATOR (1)
- CONTRACTOR (2)
- RESIDENT ENGINEER (2)
- DISTRICT 6 BUREAU OF MATERIALS (2)

ABANDONED UNDERGROUND UTILITIES THAT CONFLICT WITH CONSTRUCTION SHALL BE DISPOSED OUTSIDE THE LIMITS OF RIGHT-OF-WAY ACCORDING TO ARTICLE 202.03 OF THE STANDARD SPECIFICATIONS AND AS DIRECTED BY THE ENGINEER. THIS WORK WILL NOT BE PAID FOR SEPERATELY BUT SHALL BE CONSIDERED INCLUDED IN THE COST OF EARTH EXCAVATION AND NO ADDITIONAL COMPENSATION WILL BE ALLOWED.

THE COST OF REMOVAL OF ANY EXISTING NON-ROADWAY RELATED ITEM OR OTHER OBSTRUCTIONS WHICH INTERFERE WITH CONSTRUCTION WILL BE CONSIDERED INCLUDED IN THE COST OF SPECIAL EXCAVATION.

SEEDING WILL NOT BE PERMITTED AT ANY TIME WHEN THE GROUND IS FROZEN, WET OR IN AN UNTILLABLE CONDITION. AREAS TO BE SEEDED SHALL BE DETERMINED BY THE ENGINEER.

EXISTING PAVEMENT DAMAGED DUE TO THE CONTRACTOR'S OPERATIONS, AND NOT OTHERWISE NECESSARY TO REPLACE, SHALL BE REPLACED AT THE EXPENSE OF THE CONTRACTOR.

WHERE SECTION OR SUBSECTION MONUMENTS ARE ENCOUNTERED, THE RESIDENT ENGINEER SHALL BE NOTIFIED BEFORE SUCH MONUMENTS ARE REMOVED. THE CONTRACTOR SHALL PROTECT AND CAREFULLY PRESERVE ALL PROPERTY MARKERS AND MONUMENTS UNTIL THE OWNER AND AUTHORIZED SURVEYOR OR AGENT HAS WITNESSED OR OTHERWISE REFERENCED THEIR LOCATION. IF THE ENGINEER DECIDES TO HAVE THE CONTRACTOR RESET THE MONUMENT, THIS WORK SHALL BE PAID FOR IN ACCORDANCE WITH ARTICLE 109.04 OF THE STANDARD SPECIFICATIONS. THE CONTRACTOR WILL BE RESPONSIBLE FOR HAVING AN AUTHORIZED SURVEYOR RE-ESTABLISH ANY SECTION OR SUBSECTION MONUMENTS DESTROYED BY HIS OPERATIONS

THE THICKNESS OF BITUMINOUS MIXTURE SHOWN ON THE PLANS IS THE NOMINAL THICKNESS. DEVIATIONS FROM THE NOMINAL THICKNESS WILL BE PERMITTED WHEN SUCH DEVIATIONS OCCUR DUE TO IRREGULARITIES IN THE EXISTING SURFACE OR BASE ON WHICH THE HOT-MIX ASPHALT MIXTURE IS PLACED.

THE FOLLOWING APPLICATION RATES WERE USED FOR QUANTITY CALCULATIONS.

HOT-MIX ASPHALT SURFACE COURSE, MIX C, N50	0.056 TON / SQ YD / IN
LEVELING BINDER (MACHINE METHOD), N50	0.056 TON / SQ YD / IN
BITUMINOUS MATERIALS (PRIME COAT)	0.00038 TON / SQ YD
NITROGEN FERTILIZER NUTRIENT	90 LB / ACRE
PHOSPOROUS FERTILIZER NUTRIENT	90 LB / ACRE
POTASSIUM FERTILIZER NUTRIENT	90 LB / ACRE
AGRICULTURAL GROUND LIMESTONE	2.00 TON / ACRE
TEMPORARY EROSION CONTROL SEEDING	100 LB / ACRE
AGGREGATE MATERIAL, TYPE A	2.05 TON / CU YD
AGGREGATE SHOULDERS, TYPE B	1.89 TON / CU YD
RIPRAP	1.50 TON / CU YD

THE FOLLOWING MIXTURE REQUIREMENTS ARE APPLICABLE FOR THIS PROJECT.

Mixture Uses:	HMA SURFACE COURSE MIX "C", N50	LEVELING BINDER (MACHINE METHOD), N50	HMA BASE COURSE, 9"
PG:	PG 64-22	PG 64-22	PG 64-22
Design Air Voids	4.0% e Ndesign = 50	4.0% e Ndesign = 50	4.0% e Ndesign = 50
Mixture Composition (Gradation Mixture)	IL 9.5 OR 12.5	IL 9.5	IL 19.0
Friction Aggregate	MIXTURE "C"	N/A	N/A
20 Year ESAL			

ANY REFERENCE TO A STANDARD IN THESE PLANS SHALL BE INTERPRETED TO MEAN THE EDITION AS INDICATED BY THE SUB NUMBER LISTED IN THE INDEX OF SHEETS OR THE COPY OF THE STANDARD INCLUDED IN THESE PLANS.

IN ADDITION TO FIELD SURVEYS, PLAN DIMENSIONS AND DETAILS RELATIVE TO THE EXISTING FACILITIES HAVE BEEN TAKEN FROM EXISTING PLANS AND ARE SUBJECT TO CONSTRUCTION VARIATIONS. IT SHALL BE THE CONTRACTOR'S RESPONSIBILITY TO VERIFY SUCH DIMENSIONS AND DETAILS IN THE FIELD. SUCH VARIATIONS SHALL NOT BE A CAUSE FOR ADDITIONAL COMPENSATION DUE TO A CHANGE IN THE SCOPE OF WORK; HOWEVER, THE CONTRACTOR WILL BE PAID FOR THE QUANTITY ACTUALLY FURNISHED AT THE UNIT PRICE BID FOR THE WORK.

THE LOCATIONS OF EXISTING WATER MAINS, GAS MAINS, SEWERS, ELECTRIC POWER LINES, TELEPHONE LINES AND OTHER UTILITIES AS SHOWN ON THE PLANS ARE BASED ON CAREFUL FIELD INVESTIGATION AND THE BEST INFORMATION AVAILABLE, BUT THEY ARE NOT GUARANTEED. ALL UTILITY LOCATIONS SHOWN ON THE CROSS SECTIONS ARE BASED ON THE APPROXIMATE DEPTH SUPPLIED BY THE UTILITY COMPANY. IT SHALL BE THE CONTRACTOR'S RESPONSIBILITY TO LOCATE THEIR EXACT LOCATION FROM THE UTILITY COMPANIES AND BY FIELD INSPECTION.

THE CONTRACTOR SHALL COORDINATE ACTIVITIES WITH ALL UTILITIES WITHIN THE PROJECT LIMITS.

THE APPLICABLE PORTIONS OF ARTICLE 105.07 OF THE STANDARD SPECIFICATIONS SHALL APPLY EXCEPT FOR THE FOLLOWING: THE CONTRACTOR SHALL BE RESPONSIBLE TO LOCATE THE VERTICAL DEPTHS OF UNDERGROUND UTILITIES WHICH MAY INTERFERE WITH CONSTRUCTION OPERATIONS. THIS WORK WILL NOT BE PAID FOR SEPARATELY, BUT SHALL BE CONSIDERED AS INCLUDED IN THE COST OF EARTH EXCAVATION.

STREAM FLOWS SHALL BE MAINTAINED THROUGHOUT THE PROJECT. NORMAL FLOWS SHALL BE ALLOWED TO PASS AT THE RATE IT ENTERS THE JOBSITE. HIGH FLOWS SHALL BE ALLOWED TO PASS WITHOUT CAUSING DAMAGE TO UPSTREAM PROPERTIES.

THE FINAL TOP FOUR INCHES (100 MM) OF SOIL IN ANY RIGHT-OF-WAY AREA DISTURBED BY THE CONTRACTOR MUST BE CAPABLE OF SUPPORTING VEGETATION. THE SOIL MUST BE FROM THE A HORIZON (ZERO TO 2' DEEP) OF SOIL PROFILES OF LOCAL SOILS.

TREE REMOVAL MAY BE NECESSARY PRIOR TO UTILITY COMPANIES BEING ABLE TO RELOCATE THEIR FACILITIES OUTSIDE THE CONSTRUCTION LIMITS. THE CONTRACTOR SHOULD COORDINATE ANY CONTRACT TREE REMOVAL ACTIVITIES WITH THE UTILITY COMPANIES TO ELIMINATE CONFLICTS AND POTENTIAL DELAYS CAUSED BY UTILITY TREE REMOVAL ACTIVITIES OR INCOMPLETE UTILITY RELOCATIONS.

COMMITMENTS ARE NOT TO BE ALTERED WITHOUT THE WRITTEN APPROVAL OF ALL PARTIES TO WHICH THE COMMITMENT WAS MADE.

PRIOR APPROVAL FROM IDOT SHALL BE OBTAINED FOR ANY TREE REMOVAL BEYOND THE LIMITS/LOCATIONS INCLUDED IN THE PLANS.

ANY PROTRUDING METAL BARS SHALL BE REMOVED PRIOR TO THE DISPOSAL OF BROKEN CONCRETE AT APPROVED DISPOSAL SITES.

THE CONTRACTOR SHALL SEED ALL DISTURBED AREAS WITHIN THE PROJECT LIMITS. SEEDING CLASS 2A SHALL BE USED. FERTILIZER NUTRIENTS SHALL BE APPLIED AT THE RATE SPECIFIED IN SECTIONS 250 AND 252 OF THE STANDARD SPECIFICATIONS.

ALL BORROW/WASTE/USE SITES MUST BE APPROVED BY THE DEPARTMENT PRIOR TO REMOVING ANY MATERIAL FROM THE PROJECT OR INITIATING ANY EARTHMOVING ACTIVITIES, INCLUDING TEMPORARY STOCKPILING OUTSIDE THE LIMITS OF CONSTRUCTION.

THE FIELD/RESIDENT ENGINEER SHALL NOTIFY THE PROPERTY OWNER PRIOR TO CONSTRUCTION, DUE TO AN AGREEMENT ALLOWING THE EXISTING CULVERT TO BE UTILIZED AS A CATTLE CROSSING.

THE CONTRACTOR SHALL BE RESPONSIBLE FOR PROTECTING UTILITY PROPERTY FROM CONSTRUCTION OPERATIONS, AS OUTLINED IN ARTICLE 107.31 OF THE STANDARD SPECIFICATIONS. A MINIMUM OF 48 HOURS ADVANCE NOTICE IS REQUIRED. THE JULIE NUMBER IS 1-800-892-0123.

COMMITMENTS

THE FIELD/RESIDENT ENGINEER SHALL CONTACT STUDIES & PLANS CONCERNING ANY MAJOR PLAN CHANGES TO MAKE SURE NO PREVIOUS COMMITMENTS (NOT LISTED) WERE MADE AFFECTING THE DESIGN AND ALLOW AN IMPROVED DESIGN FOR FUTURE PROJECTS.

DISTRICT SIX	
EXAMINED <u>March 26</u> 20 <u>09</u>	<i>[Signature]</i>
OPERATIONS ENGINEER	
EXAMINED <u>March 31</u> 20 <u>09</u>	<i>[Signature]</i>
PROGRAM IMPLEMENTATION ENGINEER	
EXAMINED <u>March 17</u> 20 <u>09</u>	<i>[Signature]</i>
PROGRAM DEVELOPMENT ENGINEER	

ILLINOIS DEPARTMENT OF TRANSPORTATION
SUMMARY OF QUANTITIES

80% FED.
20% STATE

ROUTE SBI 16A (CRESS CIRCLE)				CONSTRUCTION TYPE CODE	
SUMMARY OF QUANTITIES				RWY	STR
CODE NO.	ITEM	UNIT	TOTAL	I000-2A	X028-2A
20200100	EARTH EXCAVATION	CU. YD.	145	145	
20300100	CHANNEL EXCAVATION	CU. YD.	13	13	
20400800	FURNISHED EXCAVATION	CU. YD.	250	250	
25000210	SEEDING, CLASS 2A	ACRE	0.25	0.25	
25000400	NITROGEN FERTILIZER NUTRIENT	POUND	23	23	
25000500	PHOSPHOROUS FERTILIZER NUTRIENT	POUND	23	23	
25000600	POTASSIUM FERTILIZER NUTRIENT	POUND	23	23	
25000700	AGRICULTURAL GROUND LIMESTONE	TON	0.5	0.5	
25100630	EROSION CONTROL BLANKET	SQ. YD.	888	888	
28000250	TEMPORARY EROSION CONTROL SEEDING	POUND	100	100	
28000300	TEMPORARY DITCH CHECKS	EACH	2	2	
28000400	PERIMETER EROSION BARRIER	FOOT	378	378	
31100300	SUB-BASE GRANULAR MATERIAL, TYPE A 4"	SQ. YD.	166	166	
35501320	HOT-MIX ASPHALT BASE COURSE, 9"	SQ. YD.	128	128	
40600200	BITUMINOUS MATERIALS (PRIME COAT)	TON	0.2	0.2	
40600300	AGGREGATE (PRIME COAT)	TON	0.5	0.5	

80% FED.
20% STATE

ROUTE SBI 16A (CRESS CIRCLE)				CONSTRUCTION TYPE CODE	
SUMMARY OF QUANTITIES				RWY	STR
CODE NO.	ITEM	UNIT	TOTAL	I000-2A	X028-2A
40600625	LEVELING BINDER (MACHINE METHOD), N50	TON	8	8	
40600982	HOT-MIX ASPHALT SURFACE REMOVAL - BUTT JOINT	SQ. YD.	54	54	
40603310	HOT-MIX ASPHALT SURFACE COURSE, MIX "C", N50	TON	11	11	
44000100	PAVEMENT REMOVAL	SQ. YD.	122	122	
44000400	GUTTER REMOVAL	FOOT	175	175	
48101200	AGGREGATE SHOULDERS, TYPE B	TON	25	25	
50100100	REMOVAL OF EXISTING STRUCTURES	EACH	1		1
50102400	CONCRETE REMOVAL	CU. YD.	7.0	7.0	
54001000	BOX CULVERT END SECTIONS	EACH	2		2
54010608	PRECAST CONCRETE BOX CULVERT 6' X 8'	FOOT	39.0		39.0
* 63000001	STEEL PLATE BEAM GUARD RAIL, TYPE A, 6 FOOT POST	FOOT	100	100	
* 63000025	STEEL PLATE BEAM GUARD RAIL, ATTACHED TO STRUCTURES	FOOT	50	50	
* 63100167	TRAFFIC BARRIER TERMINAL, TYPE 1 (SPECIAL) TANGENT	EACH	4	4	
63200305	STEEL PLATE BEAM GUARD RAIL REMOVAL	FOOT	133	133	
67000500	ENGINEER'S FIELD OFFICE, TYPE B	CAL MO	2	2	
67100100	MOBILIZATION	L. SUM	1	1	

* Specialty Items

FILE NAME =	USER NAME = laughlinr1	DESIGNED - DPS	REVISED -	STATE OF ILLINOIS DEPARTMENT OF TRANSPORTATION	SUMMARY OF QUANTITIES ROUTE SBI 16A (CRESS CIRCLE)	F.A.U. RTE.	SECTION	COUNTY	TOTAL SHEETS	SHEET NO.
72873-sht-summary.dgn	DRAWN - DPS	REVISED -	(21FR*13)ACB			MONTGOMERY	20	3		
PLOT SCALE = 28.0000' / IN.	CHECKED - FML	REVISED -	CONTRACT NO. 72873							
PLOT DATE = Jul-24-2009 10:35:36AM	DATE - 01/2009	REVISED -	SCALE: N/A			SHEET NO. OF SHEETS	STA.	TO STA.	FED. ROAD DIST. NO.	ILLINOIS FED. AID PROJECT

ILLINOIS DEPARTMENT OF TRANSPORTATION

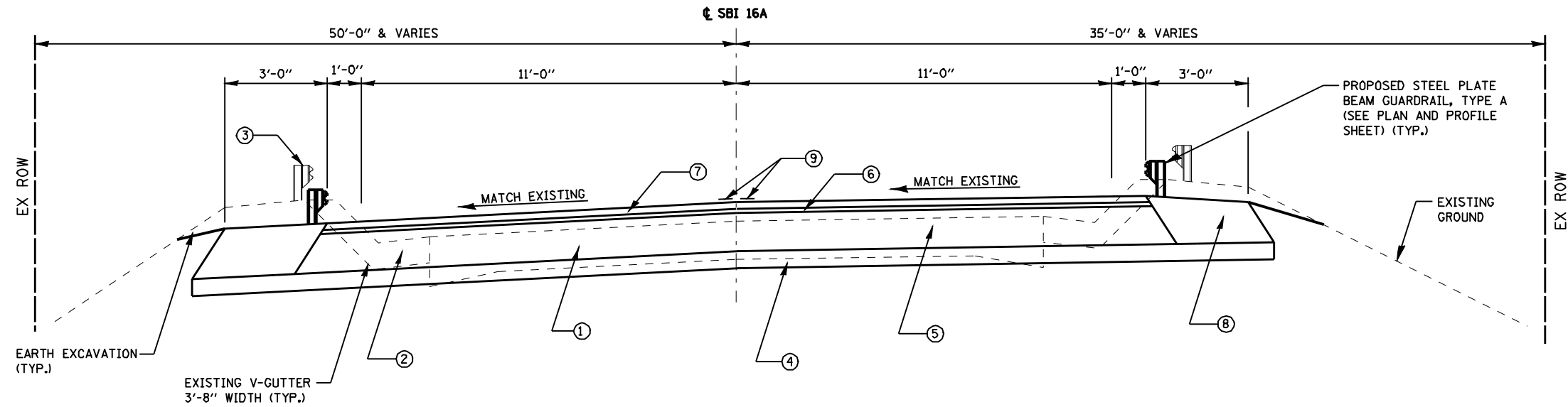
SUMMARY OF QUANTITIES

80% FED.
20% STATE

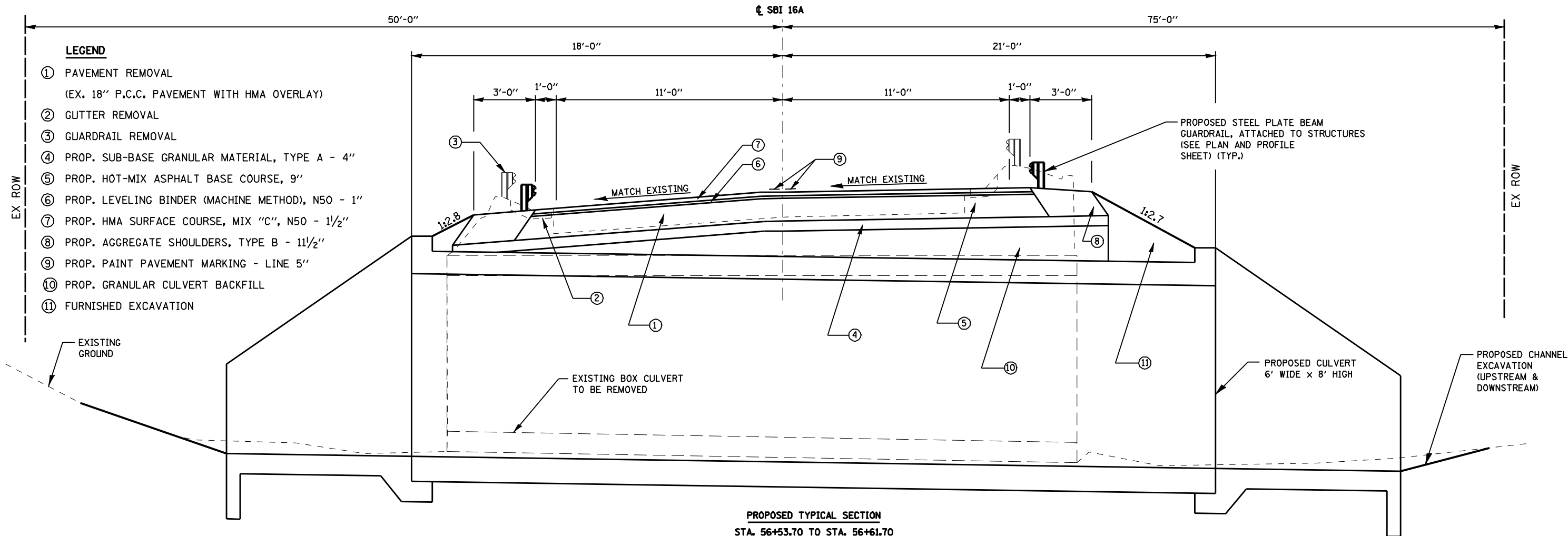
ROUTE SBI 16A (CRESS CIRCLE)				CONSTRUCTION TYPE CODE	
SUMMARY OF QUANTITIES				RWY	STR
CODE NO.	ITEM	UNIT	TOTAL	I000-2A	X028-2A
70101855	TRAFFIC CONTROL AND PROTECTION, STANDARD BLR 21 (SPECIAL)	L. SUM	1	1	
* 78001120	PAINT PAVEMENT MARKING - LINE 5"	FOOT	130	130	
* 78200420	GUARDRAIL MARKERS, TYPE B	EACH	6	6	
* 78201000	TERMINAL MARKER - DIRECT APPLIED	EACH	4	4	
X0322584	REVETMENT MAT REMOVAL	SQ. YD.	30	30	
X0324118	GRANULAR CULVERT BACKFILL	CU. YD.	222.3		222.3
XX001286	SPECIAL EXCAVATION	CU. YD.	10	10	

* Specialty Items

FILE NAME =	USER NAME = laughlinr	DESIGNED - DPS	REVISED -	STATE OF ILLINOIS DEPARTMENT OF TRANSPORTATION	SUMMARY OF QUANTITIES ROUTE SBI 16A (CRESS CIRCLE)			F.A.U. RTE.	SECTION	COUNTY	TOTAL SHEETS	SHEET NO.
ca:\pwwork\pwwork\LAUGHLINR\8156219.D	72873-shr-summary.dgn	DRAWN - DPS	REVISED -		SCALE: N/A	SHEET NO. OF SHEETS	STA.	TO STA.	(21FR*1)ACB	MONTGOMERY	20	4
	PLOT SCALE = 20.0000' / IN.	CHECKED - FML	REVISED -		CONTRACT NO. 72873			FED. ROAD DIST. NO. ILLINOIS FED. AID PROJECT				
	PLOT DATE = Jul-24-2009 10:35:38AM	DATE - 01/2009	REVISED -									



PROPOSED TYPICAL SECTION
 STA. 56+35.00 TO STA. 56+53.70 & STA. 56+61.70 TO STA. 56+80.00



PROPOSED TYPICAL SECTION
 STA. 56+53.70 TO STA. 56+61.70

LEGEND

- ① PAVEMENT REMOVAL
(EX. 18" P.C.C. PAVEMENT WITH HMA OVERLAY)
- ② GUTTER REMOVAL
- ③ GUARDRAIL REMOVAL
- ④ PROP. SUB-BASE GRANULAR MATERIAL, TYPE A - 4"
- ⑤ PROP. HOT-MIX ASPHALT BASE COURSE, 9"
- ⑥ PROP. LEVELING BINDER (MACHINE METHOD), N50 - 1"
- ⑦ PROP. HMA SURFACE COURSE, MIX "C", N50 - 1 1/2"
- ⑧ PROP. AGGREGATE SHOULDERS, TYPE B - 11 1/2"
- ⑨ PROP. PAINT PAVEMENT MARKING - LINE 5"
- ⑩ PROP. GRANULAR CULVERT BACKFILL
- ⑪ FURNISHED EXCAVATION

FILE NAME =	USER NAME = laughlinr1	DESIGNED - DMM	REVISED -	STATE OF ILLINOIS DEPARTMENT OF TRANSPORTATION	TYPICAL SECTIONS ROUTE SBI 16A (CRESS CIRCLE)			F.A. RTE.	SECTION	COUNTY	TOTAL SHEETS	SHEET NO.
ca:\pwwork\pwwid001\LAUGHLINRL\0156219\0722873-shr-typical.dgn		DRAWN - DMM	REVISED -		SCALE: N.T.S	SHEET NO.	OF SHEETS	STA. 56+25.00 TO STA. 56+90.00	(21IFR*1)ACB	MONTGOMERY	20	5
PLOT SCALE = 48.0000' / IN.		CHECKED - FL	REVISED -					FED. ROAD DIST. NO.	ILLINOIS FED. AID PROJECT			
PLOT DATE = Jul-24-2009 10:37:06AM		DATE - 10/2008	REVISED -					CONTRACT NO. 72B73				

EARTHWORK

LOCATION	EARTH EXCAVATION	EMBANKMENT	EARTH EXCAVATION ADJ. FOR SHRINKAGE	CHANNEL EXCAVATION	CHANNEL EXCAVATION ADJ. FOR SHRINKAGE	WASTE (+) SHORTAGE (-)
STATION TO STATION	CU. YD.					
55+22.00 TO 55+50.00	0.0	0.0	0.0			0.0
55+50.00 TO 56+00.00	0.7	56.7	0.6			-56.1
56+00.00 TO 56+25.00	6.0	70.8	4.5			-66.3
56+25.00 TO 56+57.70	63.1	122.9	47.3	13	9.75	-65.8
56+57.70 TO 56+90.00	62.3	111.2	46.7			-64.5
56+90.00 TO 57+00.00	4.0	4.5	3.0			-1.5
57+00.00 TO 57+22.00	8.8	0.0	6.6			6.6
TOTAL	145.0	366.1	108.7	13	9.75	-247.6

NOTE:
 SHRINKAGE FACTOR = 25% FOR EARTH AND CHANNEL EXCAVATION.
 CHANNEL EXCAVATION ASSUMED TO BE SUITABLE MATERIAL, AND IS INCLUDED IN EARTHWORK BALANCE.
 EARTH EXCAVATION AND FURNISHED EXCAVATION TOTALS ARE ROUNDED TO THE NEAREST 5 CU. YDS.
 CHANNEL EXCAVATION TOTAL IS ROUNDED TO THE NEAREST 1 CU. YD.

SEEDING, CLASS 2A

LOCATION	QUANTITY	
STATION	OFFSET	(ACRE)
55+22.00 TO 57+10.50	LT	0.06
55+22.00 TO 57+10.50	RT	0.12
	TOTAL	0.18
	USE	0.25

NITROGEN FERTILIZER NUTRIENT

LOCATION	QUANTITY	
STATION	OFFSET	(POUND)
55+22.00 TO 57+10.50	JOBSITE	23
	TOTAL	23

PHOSPHOROUS FERTILIZER NUTRIENT

LOCATION	QUANTITY	
STATION	OFFSET	(POUND)
55+22.00 TO 57+10.50	JOBSITE	23
	TOTAL	23

POTASSIUM FERTILIZER NUTRIENT

LOCATION	QUANTITY	
STATION	OFFSET	(POUND)
55+22.00 TO 57+10.50	JOBSITE	23
	TOTAL	23

AGRICULTURAL GROUND LIMESTONE

LOCATION	QUANTITY	
STATION	OFFSET	(TON)
55+22.00 TO 57+10.50	JOBSITE	0.5
	TOTAL	0.5

EROSION CONTROL BLANKET

LOCATION	QUANTITY	
STATION	OFFSET	(SQ YD)
55+22.00 TO 57+10.50	LT	279
55+22.00 TO 57+10.50	RT	609
	TOTAL	888

TEMPORARY EROSION CONTROL SEEDING

LOCATION	QUANTITY
JOBSITE	(POUND)
	100
TOTAL	100

TEMPORARY DITCH CHECKS

LOCATION	QUANTITY	
STATION	OFFSET	(EACH)
56+43.3	35.1' RT.	1
56+76.8	29.8' RT.	1
	TOTAL	2

PERIMETER EROSION BARRIER

LOCATION	QUANTITY	
STATION	OFFSET	(FOOT)
55+19.65 TO 56+35.25	LT	127
56+75.61 TO 57+10.30	LT	50
55+19.65 TO 56+50.43	RT	139
56+72.16 TO 57+10.30	RT	62
	TOTAL	378

**SUB-BASE GRANULAR MATERIAL
TYPE A_s - 4"**

LOCATION	QUANTITY	
STATION	(SQ YD)	
56+35.00 TO 56+57.70	83.3	
56+57.70 TO 56+80.00	81.8	
	TOTAL	165.1
	USE	166

HOT-MIX ASPHALT BASE COURSE, 9"

LOCATION	QUANTITY	
STATION	(SQ YD)	
56+35.00 TO 56+57.70	64.3	
56+57.70 TO 56+80.00	63.2	
	TOTAL	127.5
	USE	128

BITUMINOUS MATERIALS (PRIME COAT)

LOCATION	QUANTITY	
STATION	(TON)	
56+35.00 TO 56+80.00	0.1	
x2 APPLICATIONS	0.1	
	TOTAL	0.2

AGGREGATE (PRIME COAT)

LOCATION	QUANTITY
STATION	(TON)
56+35.00 TO 56+80.00	0.1
x2 APPLICATIONS	
56+25.00 TO 56+90.00, LT. & RT.	0.4
x3 APPLICATIONS	
TOTAL	0.5

LEVELING BINDER (MACHINE METHOD), N50

LOCATION	QUANTITY
STATION	(TON)
56+35.00 TO 56+57.70	3.6
56+57.70 TO 56+80.00	3.5
TOTAL	7.1
USE	8

**HOT-MIX ASPHALT SURFACE
REMOVAL - BUTT JOINT**

LOCATION	QUANTITY
STATION	(SQ YD)
56+25.00 TO 56+35.00	27
56+80.00 TO 56+90.00	27
TOTAL	54

**HOT-MIX ASPHALT SURFACE
COURSE, MIX "C", N50**

LOCATION	QUANTITY
STATION	(TON)
56+35.00 TO 56+57.70	5.4
56+57.70 TO 56+80.00	5.3
TOTAL	10.7
USE	11

PAVEMENT REMOVAL

LOCATION	QUANTITY
STATION	(SQ YD)
56+35.00 TO 56+57.70	62
56+57.70 TO 56+80.00	60
TOTAL	122

GUTTER REMOVAL

LOCATION	QUANTITY
STATION	OFFSET (FOOT)
56+25.00 TO 57+22.0	LT 97.0
56+12.5 TO 56+90.00	RT 77.5
TOTAL	174.5
USE	175

AGGREGATE SHOULDERS, TYPE B

LOCATION	QUANTITY
STATION	OFFSET (TON)
56+25.00 TO 56+90.00	LT 11.9
56+25.00 TO 56+90.00	RT 12.3
TOTAL	24.2
USE	25

CONCRETE REMOVAL

LOCATION	QUANTITY
STATION	OFFSET (CU. YD.)
56+54.2 TO 56+59.3	LT 3.1
56+58.5 TO 56+64.9	RT 3.9
TOTAL	7.0

STEEL PLATE BEAM GUARD RAIL, TYPE A, 6 FOOT POST

LOCATION	QUANTITY
STATION	OFFSET (FOOT)
55+72.00 TO 56+47.00	RT 75
56+22.00 TO 56+47.00	LT 25
TOTAL	100

**STEEL PLATE BEAM GUARD RAIL,
ATTACHED TO STRUCTURES**

LOCATION	QUANTITY
STATION	OFFSET (FOOT)
56+47.00 TO 56+72.00	LT 25
56+47.00 TO 56+72.00	RT 25
TOTAL	50

**TRAFFIC BARRIER TERMINAL, TYPE 1
(SPECIAL) TANGENT**

LOCATION	QUANTITY
STATION	OFFSET (EACH)
55+22.00 TO 55+72.00	RT 1
55+72.00 TO 56+22.00	LT 1
56+72.00 TO 57+22.00	RT 1
56+72.00 TO 57+22.00	LT 1
TOTAL	4

STEEL PLATE BEAM GUARD RAIL REMOVAL

LOCATION	QUANTITY
STATION	OFFSET (FOOT)
56+43.1 TO 56+84.3	LT 41.2
55+98.2 TO 56+88.1	RT 91.1
TOTAL	132.3
USE	133

ENGINEER'S FIELD OFFICE, TYPE B

LOCATION	QUANTITY
JOBSITE	(CAL MO)
JOBSITE	2
TOTAL	2

MOBILIZATION

LOCATION	QUANTITY
JOBSITE	(L SUM)
JOBSITE	1
TOTAL	1

**TRAFFIC CONTROL AND PROTECTION,
STANDARD BLR 21 (SPECIAL)**

LOCATION	QUANTITY
STATION	(L SUM)
JOBSITE	1
TOTAL	1

**PAINT PAVEMENT MARKING -
LINE 5''**

LOCATION		QUANTITY
STATION	OFFSET	(FOOT)
56+25.00 TO 56+90.00	± x2	130
TOTAL		130

GUARDRAIL MARKERS, TYPE B

LOCATION		QUANTITY
STATION	OFFSET	(EACH)
55+72.00	LT	1
56+22.00	LT	1
56+72.00	LT	1
55+59.50	RT	1
56+09.50	RT	1
56+59.50	RT	1
TOTAL		6

TERMINAL MARKER - DIRECT APPLIED

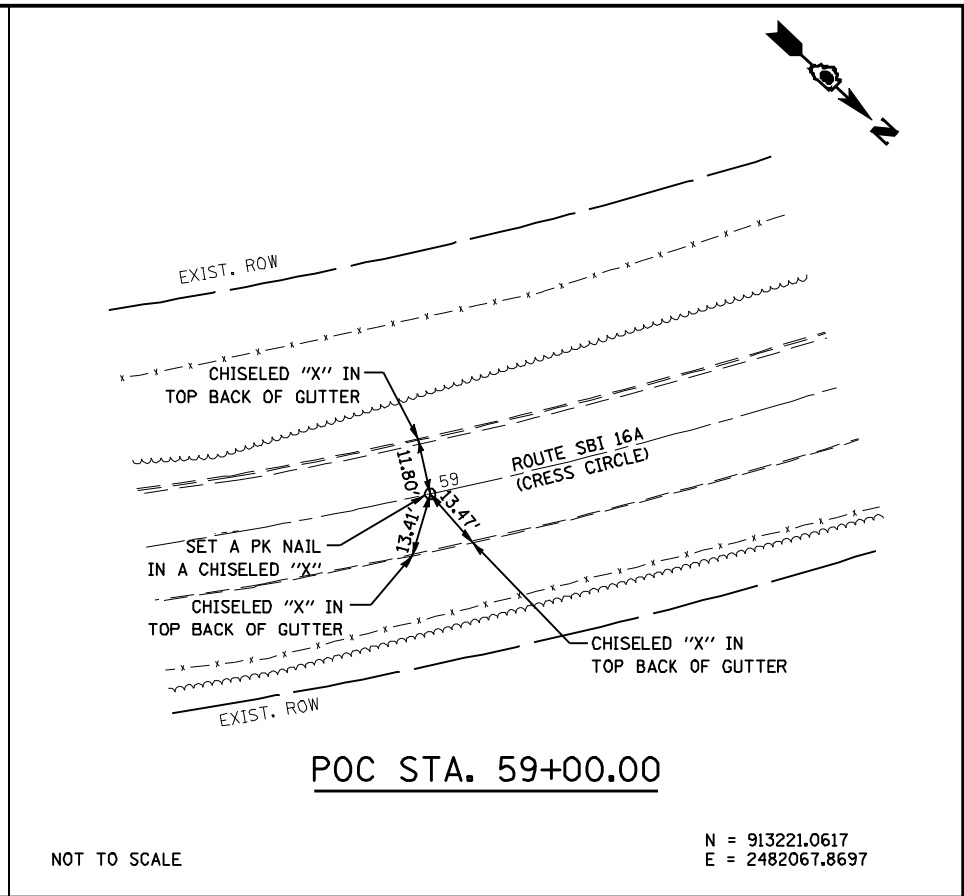
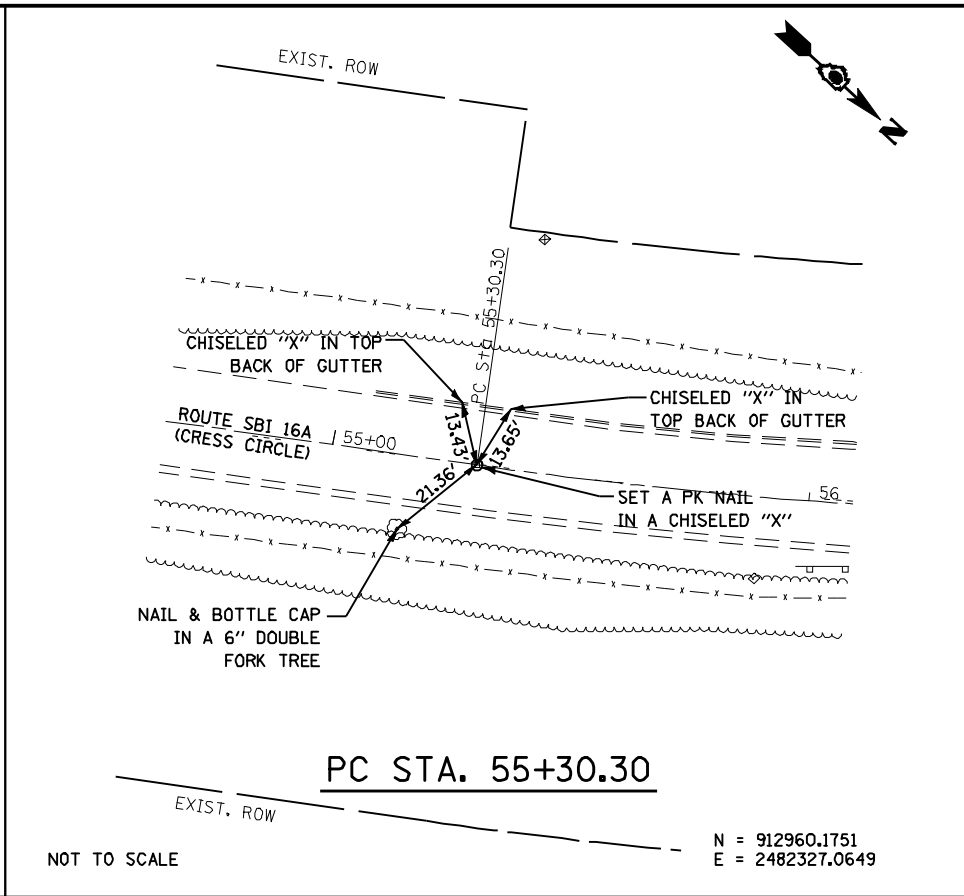
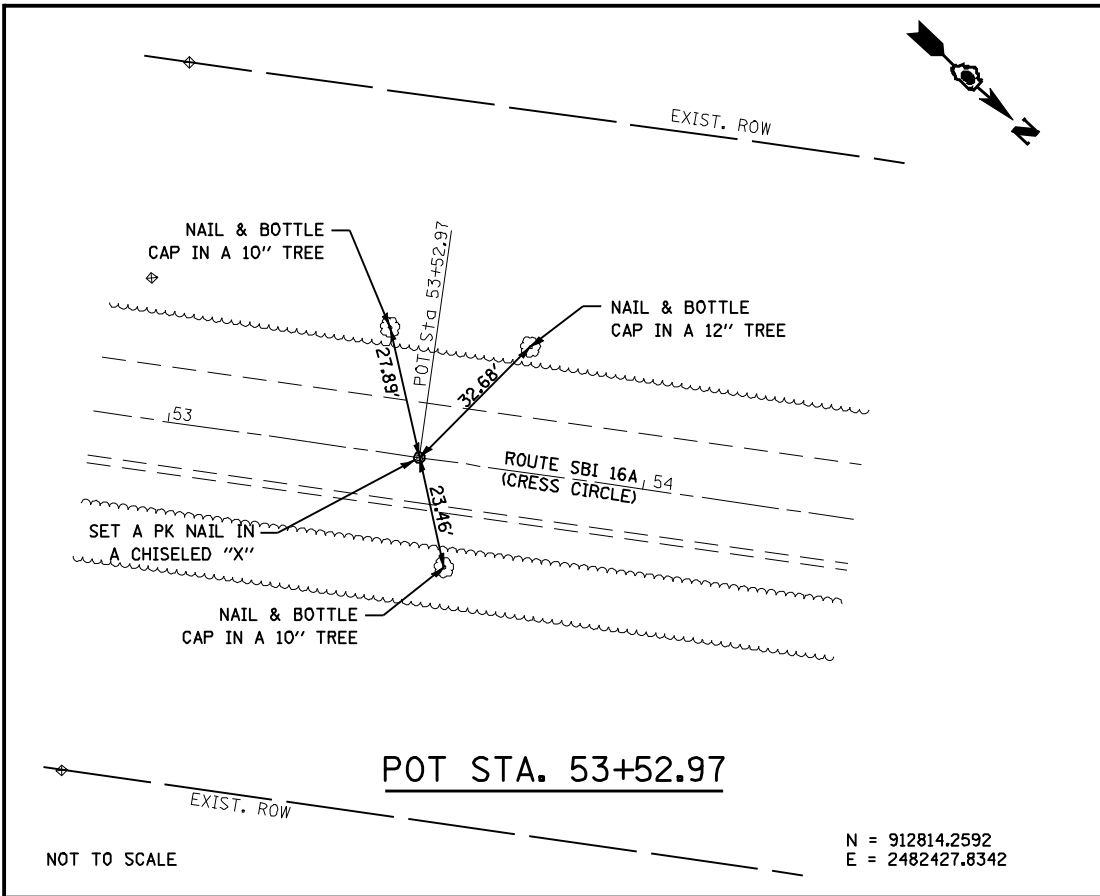
LOCATION		QUANTITY
STATION	OFFSET	(EACH)
55+22.00	RT	1
55+72.00	LT	1
57+22.00	RT	1
57+22.00	LT	1
TOTAL		4

REVTMENT MAT REMOVAL

LOCATION		QUANTITY
STATION TO STATION	OFFSET	(SQ. YD.)
56+62.72 TO 56+96.32	LT	28.9
USE		30

SPECIAL EXCAVATION

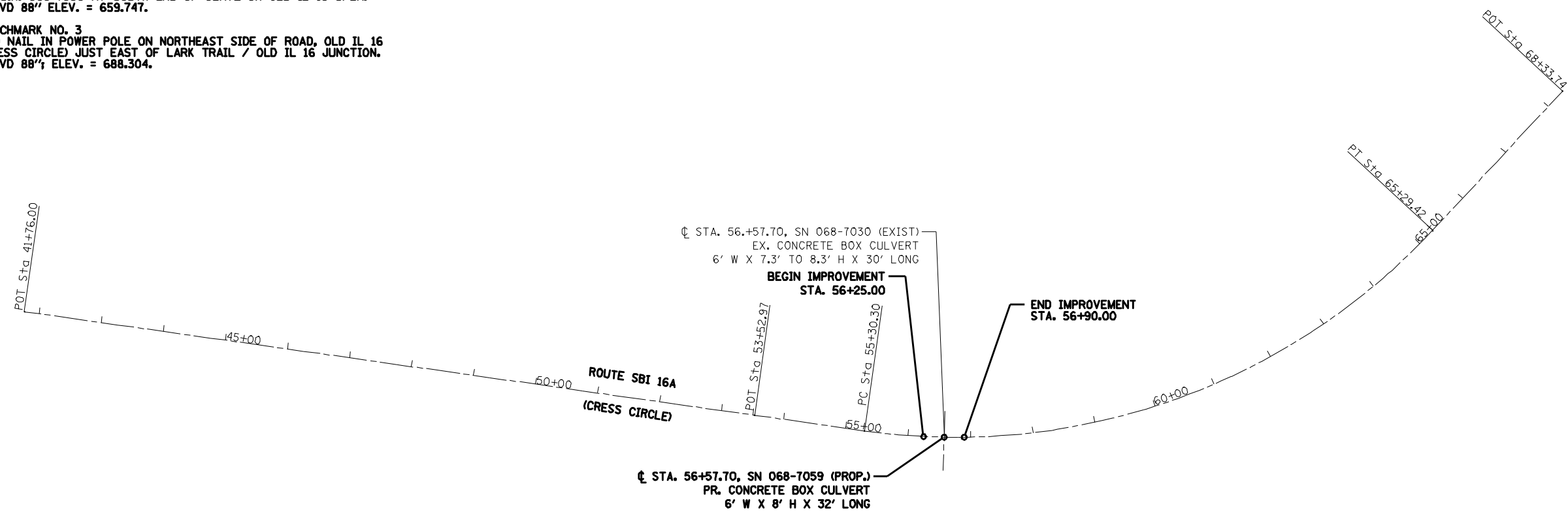
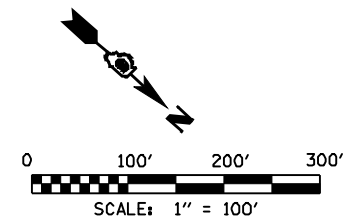
LOCATION	QUANTITY (CU. YD.)
JOBSITE	10
TOTAL	10



BENCHMARK NO. 1
CHISELED "□" CUT ON EAST CORNER OF SOUTH CONCRETE FOUNDATION OF CRESS CEMETARY ENTRANCE. "NAVD 88"; ELEV. = 617.737.

BENCHMARK NO. 2
CHISELED "□" CUT ON CENTER OF EAST HEADWALL OF S.N. 068-7030 AT SOUTH END OF CURVE ON OLD IL 16 SPUR. "NAVD 88" ELEV. = 659.747.

BENCHMARK NO. 3
60D NAIL IN POWER POLE ON NORTHEAST SIDE OF ROAD, OLD IL 16 (CRESS CIRCLE) JUST EAST OF LARK TRAIL / OLD IL 16 JUNCTION. "NAVD 88"; ELEV. = 688.304.



EXIST. CURVE C100
PI STA. = 60+72.20
 $\Delta = 55^\circ 02' 56''$ (LT)
 $D = 5^\circ 30' 35''$
 $R = 1,039.90'$
 $T = 541.90'$
 $L = 999.12'$
 $E = 132.72'$
 $e =$
T.R. =
S.E. RUN = MATCH EXIST.
P.C. STA. = 55+30.30
P.T. STA. = 65+29.42

FILE NAME =	USER NAME = laughlinr1	DESIGNED - DMM	REVISED -	STATE OF ILLINOIS DEPARTMENT OF TRANSPORTATION	ALIGNMENT, TIES AND BENCHMARKS ROUTE SBI 16A (CRESS CIRCLE)				F.A. RTE.	SECTION	COUNTY	TOTAL SHEETS	SHEET NO.
ca:\pwwork\pwwid001\LAUGHLINRL\02156219\0722673-sht-ATB.dgn		DRAWN - DMM	REVISED -		SCALE: 1" = 100'	SHEET NO.	OF	SHEETS	STA.	TO STA.	MONTGOMERY	20	9
		CHECKED - FL	REVISED -		CONTRACT NO. 72B73	FED. ROAD DIST. NO.	ILLINOIS	FED. AID PROJECT					
		DATE - 10/2008	REVISED -										

PLAN	SURVEYED	BY	DATE
	PLOTTED		
	ALIGNED		
	CHECKED		
	FILED		
	NO.		

PROFILE	SURVEYED	BY	DATE
	PLOTTED		
	GRADES		
	CHECKED		
	STRUCTURE		
	NOTATIONS		
	NO.		

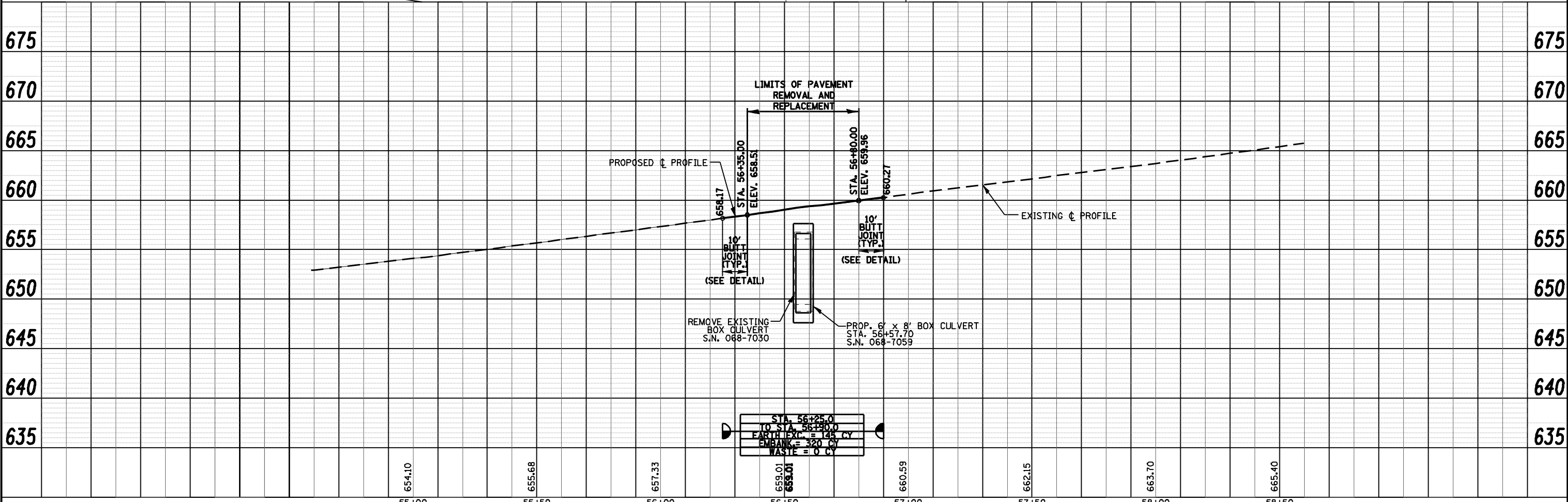
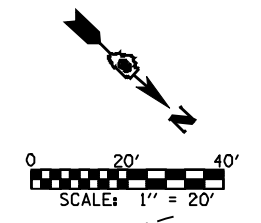
PR. STEEL PLATE BEAM GUARD RAIL, TYPE A
STA. 55+72.00 TO STA. 56+47.00 RT
STA. 56+22.00 TO STA. 56+47.00 LT

PR. STEEL PLATE BEAM GUARD RAIL,
ATTACHED TO STRUCTURES
STA. 56+47.00 TO STA. 56+72.00 LT & RT

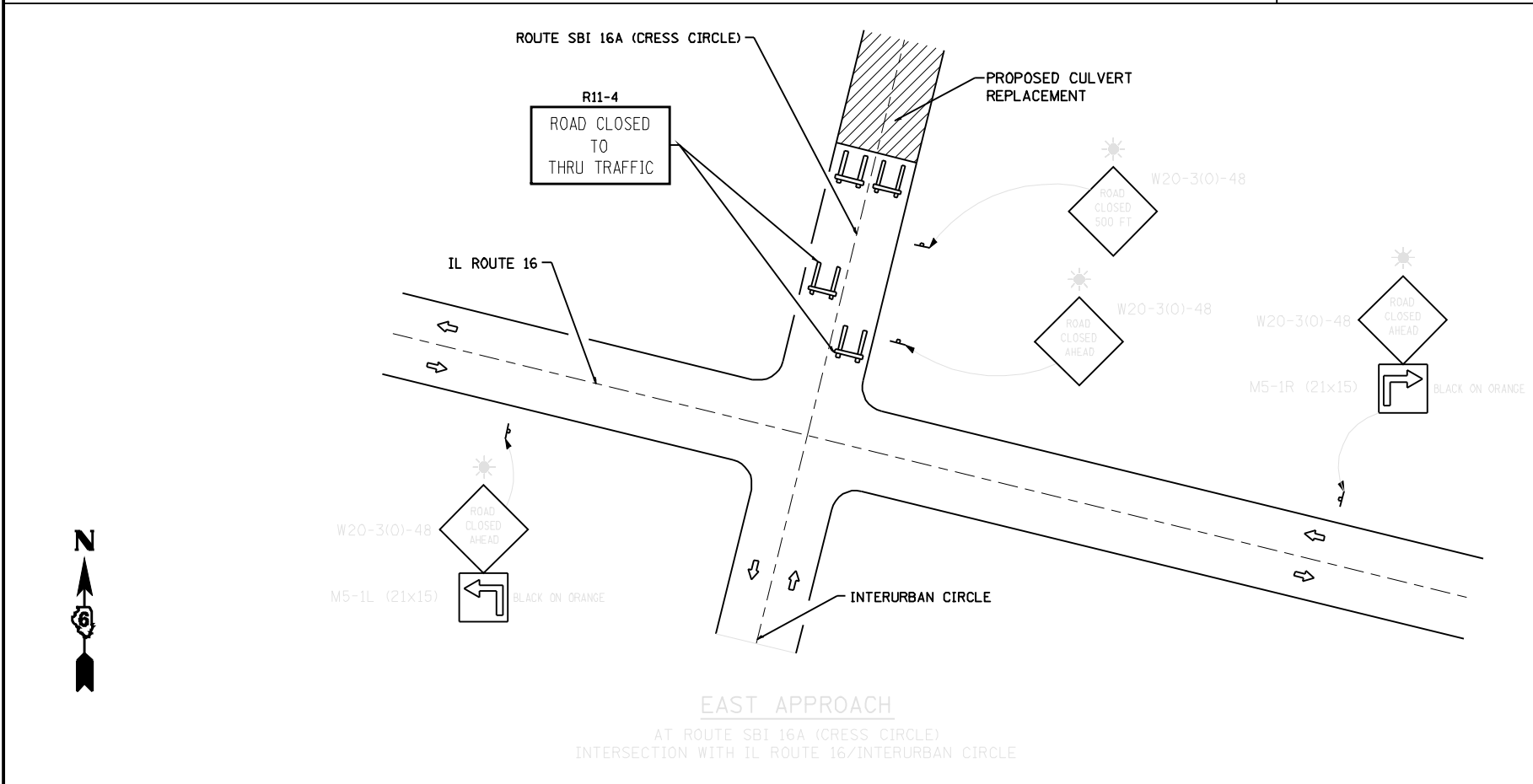
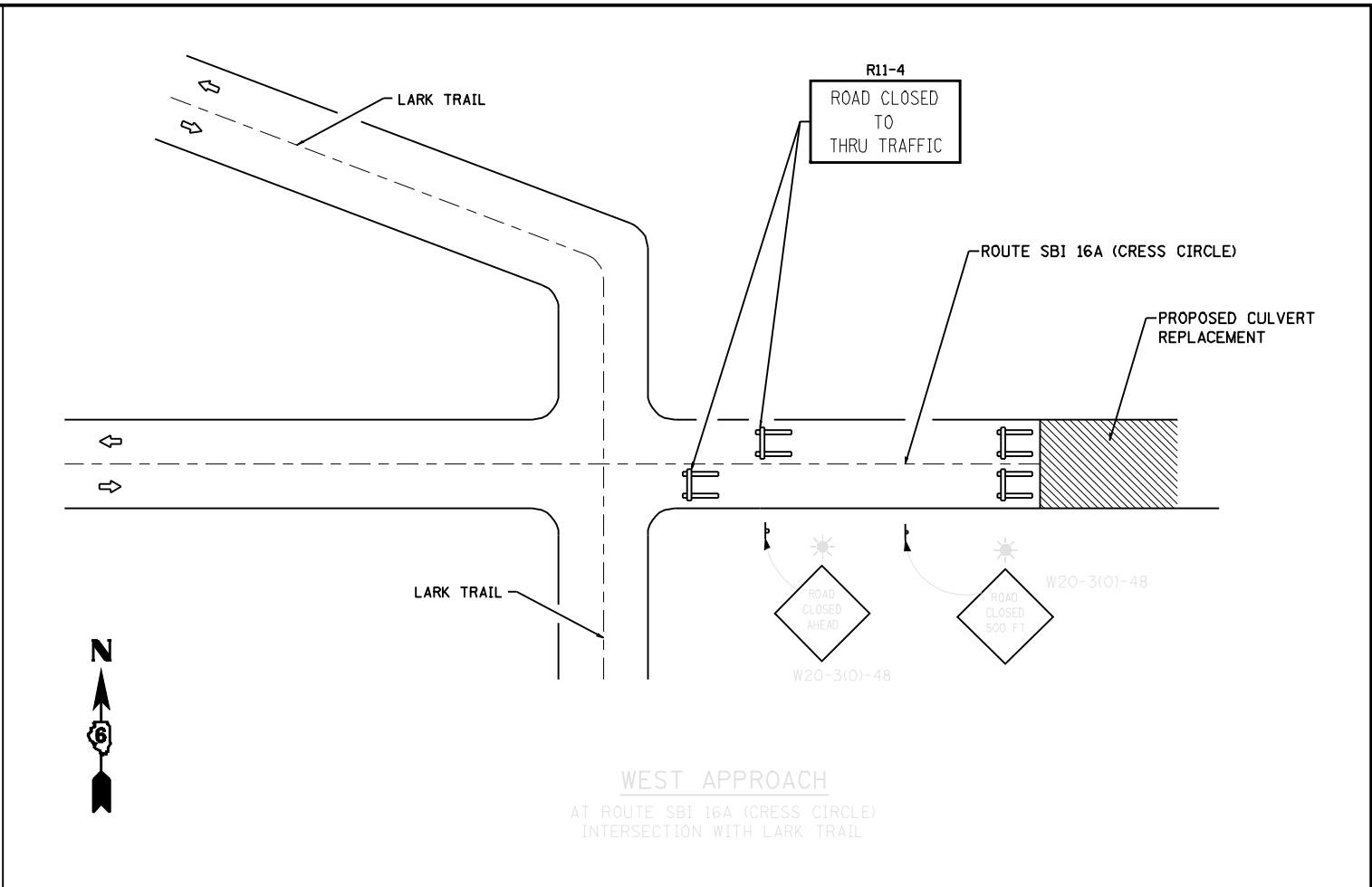
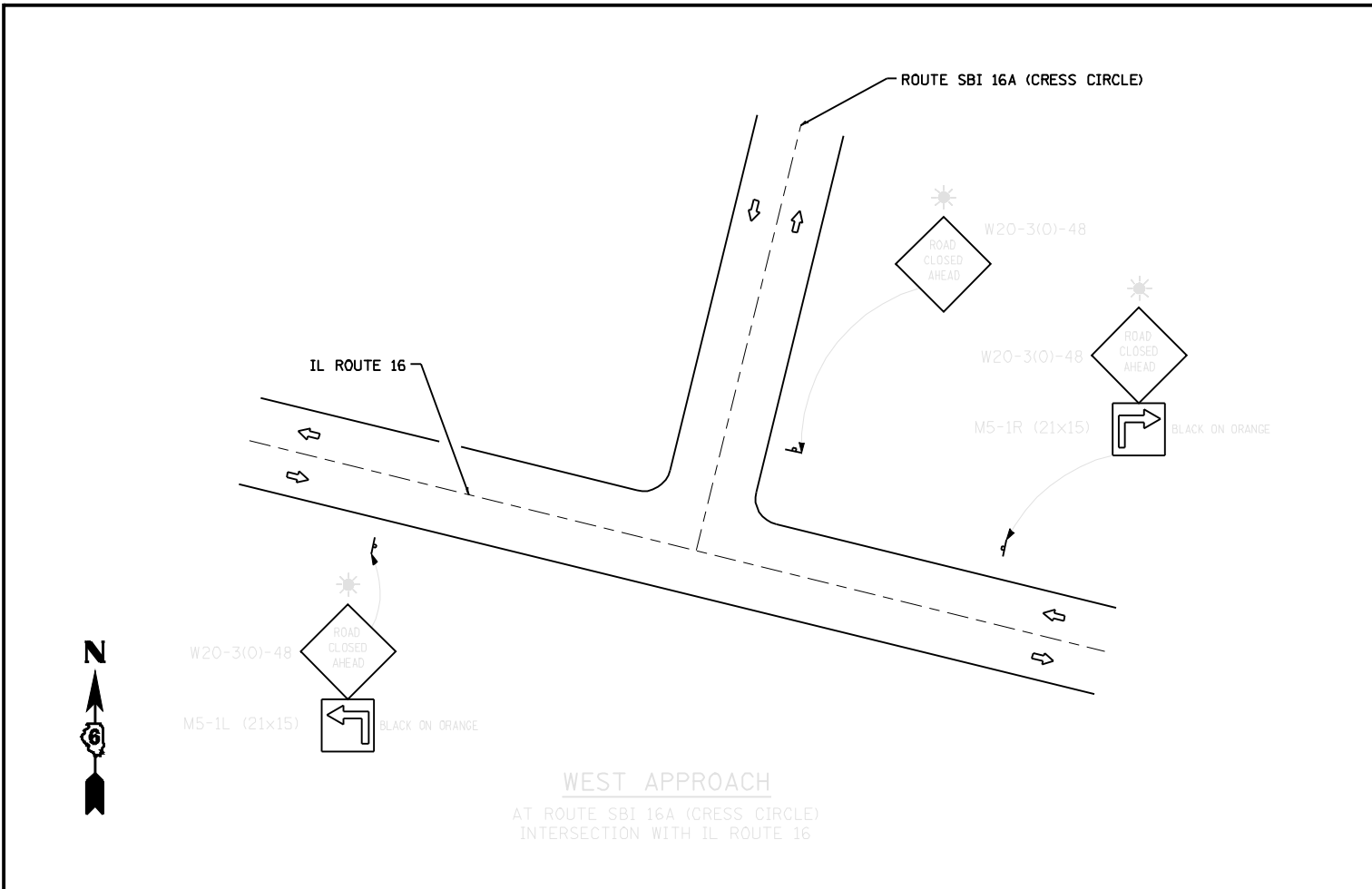
PR. TRAFFIC BARRIER TERMINAL, TYPE 1
(SPECIAL) TANGENT (SEE NOTE 1)
STA. 55+22.00 TO STA. 55+72.00 RT
STA. 55+72.00 TO STA. 56+22.00 LT
STA. 56+72.00 TO STA. 57+22.00 LT & RT

NOTE:
1) THE GUARDRAIL IS 24' FACE TO FACE.
DO NOT CONSTRUCT A TAPER FOR SHOULDER
AS SHOWN IN HWY. STD. 630301.

EXIST. CURVE C100
PI STA. = 60+72.20
Δ = 55° 02' 56" (LT)
D = 5° 30' 35"
R = 1,039.90'
T = 541.90'
L = 999.12'
E = 132.72'
e = -----
T.R. = -----
S.E. RUN = MATCH EXIST.
P.C. STA. = 55+30.30
P.T. STA. = 65+29.42



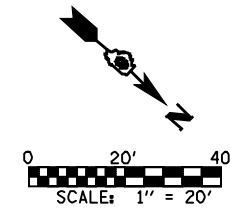
FILE NAME =	USER NAME = laughlinr1	DESIGNED - DMM	REVISED -	STATE OF ILLINOIS DEPARTMENT OF TRANSPORTATION	PLAN AND PROFILE SHEET ROUTE SBI 16A (CRESS CIRCLE)	F.A. RTE.	SECTION	COUNTY	TOTAL SHEETS	SHEET NO.	
ca:\pwwork\pwwid001\LAUGHLINR1\d0156219\0672873-sht-plnprf.dgn		DRAWN - DMM	REVISED -			(21FR*1)ACB	MONTGOMERY	20	10		
PLOT SCALE = 40.0000' / IN.		CHECKED - FL	REVISED -								
PLOT DATE = Jul-24-2009 10:33:15AM		DATE - 10/2008	REVISED -								
					SCALE: H1"=20', V1"=4'	SHEET NO. OF SHEETS	STA. 56+25.00 TO STA. 56+90.00				CONTRACT NO. 72B73
							FED. ROAD DIST. NO.				ILLINOIS FED. AID PROJECT



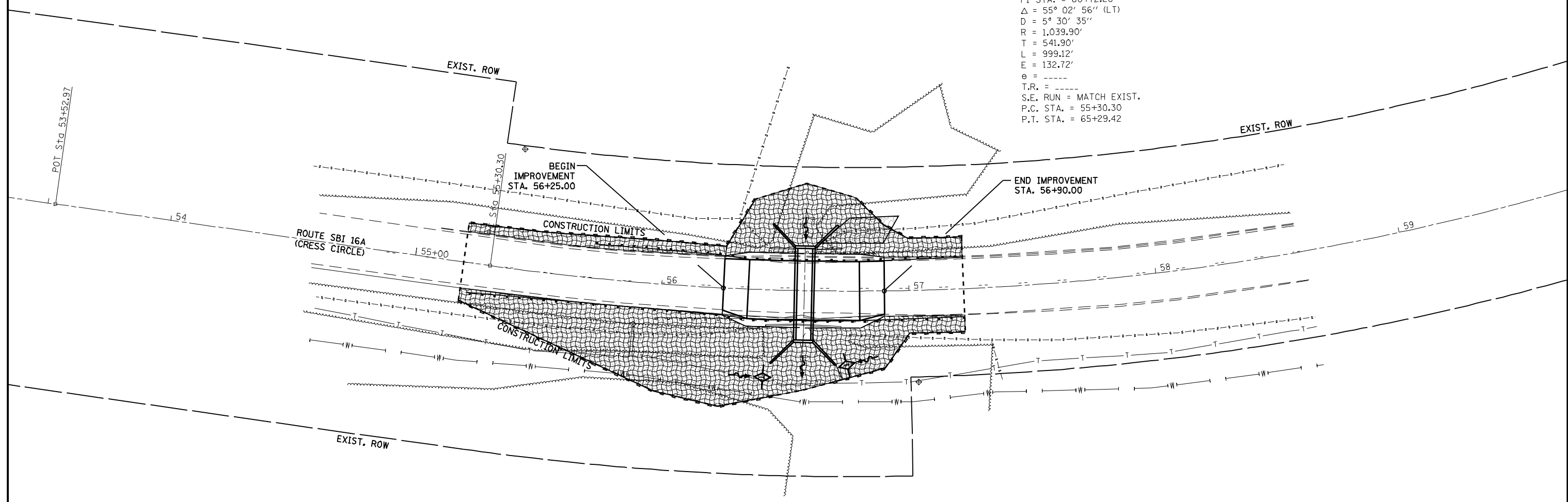
- NOTES:
1. TRAFFIC CONTROL TO BE PROVIDED IN ACCORDANCE WITH HIGHWAY STANDARD B.L.R. 21-8 AND AS SPECIFIED HEREIN, AND SHALL BE PAID AT THE CONTRACT PRICE PER "LUMP SUM" FOR TRAFFIC CONTROL AND PROTECTION, STANDARD BLR 21 (SPECIAL).
 2. SIGN LOCATIONS SHALL BE DETERMINED BY THE ENGINEER.
 3. SEE HIGHWAY STANDARD B.L.R. 21-8 FOR DETAILS NOT SHOWN.

- SYMBOLS
- WORK AREA
 - TYPE III BARRICADE W/ 2 TYPE A LIGHTS
 - SIGN WITH FLASHING LIGHT

FILE NAME =	USER NAME = laughlinr1	DESIGNED - FML	REVISED -	STATE OF ILLINOIS DEPARTMENT OF TRANSPORTATION	MAINTENANCE OF TRAFFIC DETAIL ROUTE SBI 16A (CRESS CIRCLE)			F.A. RTE.	SECTION	COUNTY	TOTAL SHEETS	SHEET NO.
ca:\pwwork\pwwid001\LAUGHLINRL\02156219\072272B73-sht-MOT.dgn	DRAWN - FML	REVISED -	(21IFR#1)ACB					MONTGOMERY	20	11		
PLOT SCALE = 20.0000' / IN.	CHECKED - DMM	REVISED -	CONTRACT NO. 72B73									
PLOT DATE = Jul-24-2009 10:39:17AM	DATE - 10/2008	REVISED -	FED. ROAD DIST. NO.					ILLINOIS FED. AID PROJECT				
				SCALE: N.T.S.	SHEET NO.	OF SHEETS	STA.	TO STA.				



EXIST. CURVE C100
 PI STA. = 60+72.20
 $\Delta = 55^\circ 02' 56''$ (LT)
 $D = 5^\circ 30' 35''$
 $R = 1,039.90'$
 $T = 541.90'$
 $L = 999.12'$
 $E = 132.72'$
 $e = \text{-----}$
 $T.R. = \text{-----}$
 S.E. RUN = MATCH EXIST.
 P.C. STA. = 55+30.30
 P.T. STA. = 65+29.42



LEGEND	
	SEEDING, CLASS 2A
	EROSION CONTROL BLANKET
	PERIMETER EROSION BARRIER
	TEMPORARY DITCH CHECK

FILE NAME =	USER NAME = laughlinr1	DESIGNED - DMM	REVISED -
ca:\pwwork\pwwid001\LAUGHLINRL\0156219\0722673-sht-eros.dgn		DRAWN - DMM	REVISED -
	PLOT SCALE = 40.0000' / IN.	CHECKED - FL	REVISED -
	PLOT DATE = Jul-24-2009 10:39:19AM	DATE - 10/2008	REVISED -

**STATE OF ILLINOIS
 DEPARTMENT OF TRANSPORTATION**

**EROSION CONTROL PLAN
 ROUTE SBI 16A (CRESS CIRCLE)**

SCALE: 1"=20' SHEET NO. OF SHEETS STA. 56+25.00 TO STA. 56+90.00

F.A. RTE.	SECTION	COUNTY	TOTAL SHEETS	SHEET NO.
	(21[FR*1])ACB	MONTGOMERY	20	12
FED. ROAD DIST. NO.			ILLINOIS FED. AID PROJECT	
CONTRACT NO. 72B73				

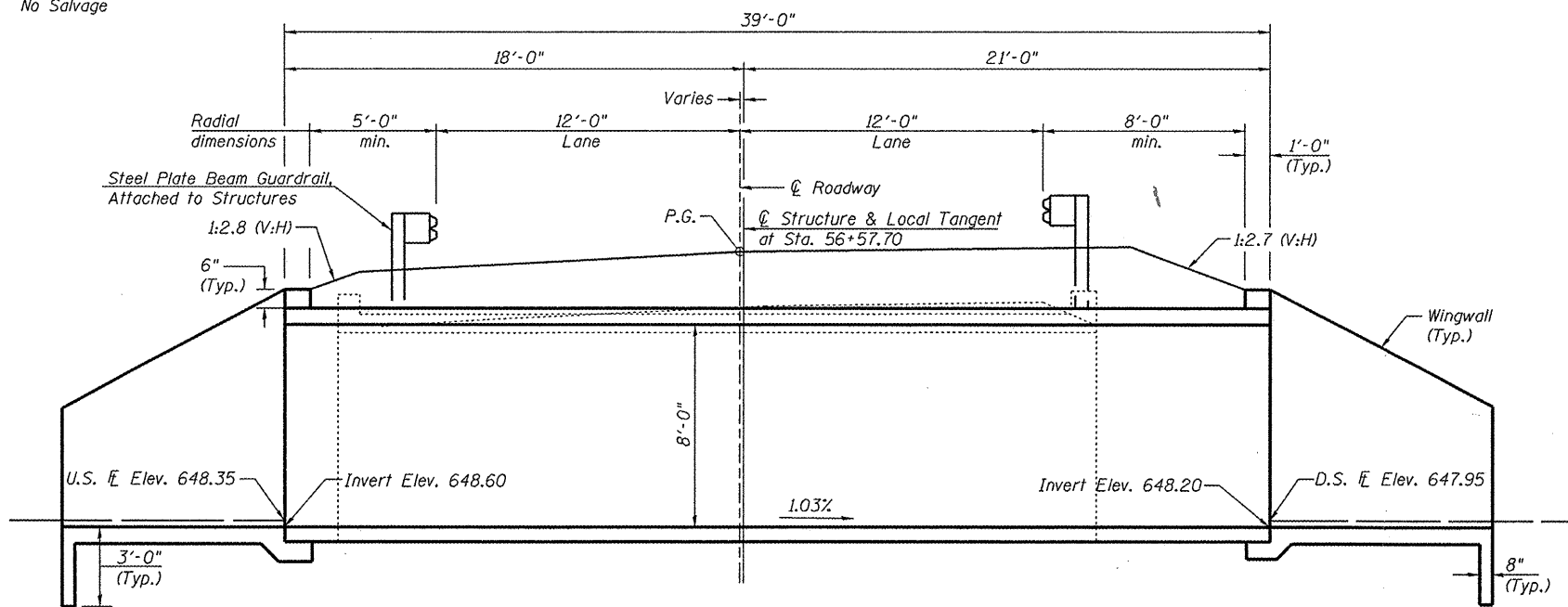
Bench Mark: Chiseled "□" in east headwall of SN 068-7030 at south end of curve, Elev. 659.747 (NAVD 88).

Existing Structure S.N. 068-7030; built in 1965 as a single 6'x8' box culvert, 30' o. to a. headwall and with no skew. The existing structure is to be removed and replaced with a 39'-0", 6'x8' precast concrete box culvert.

Road closure shall be used for construction.

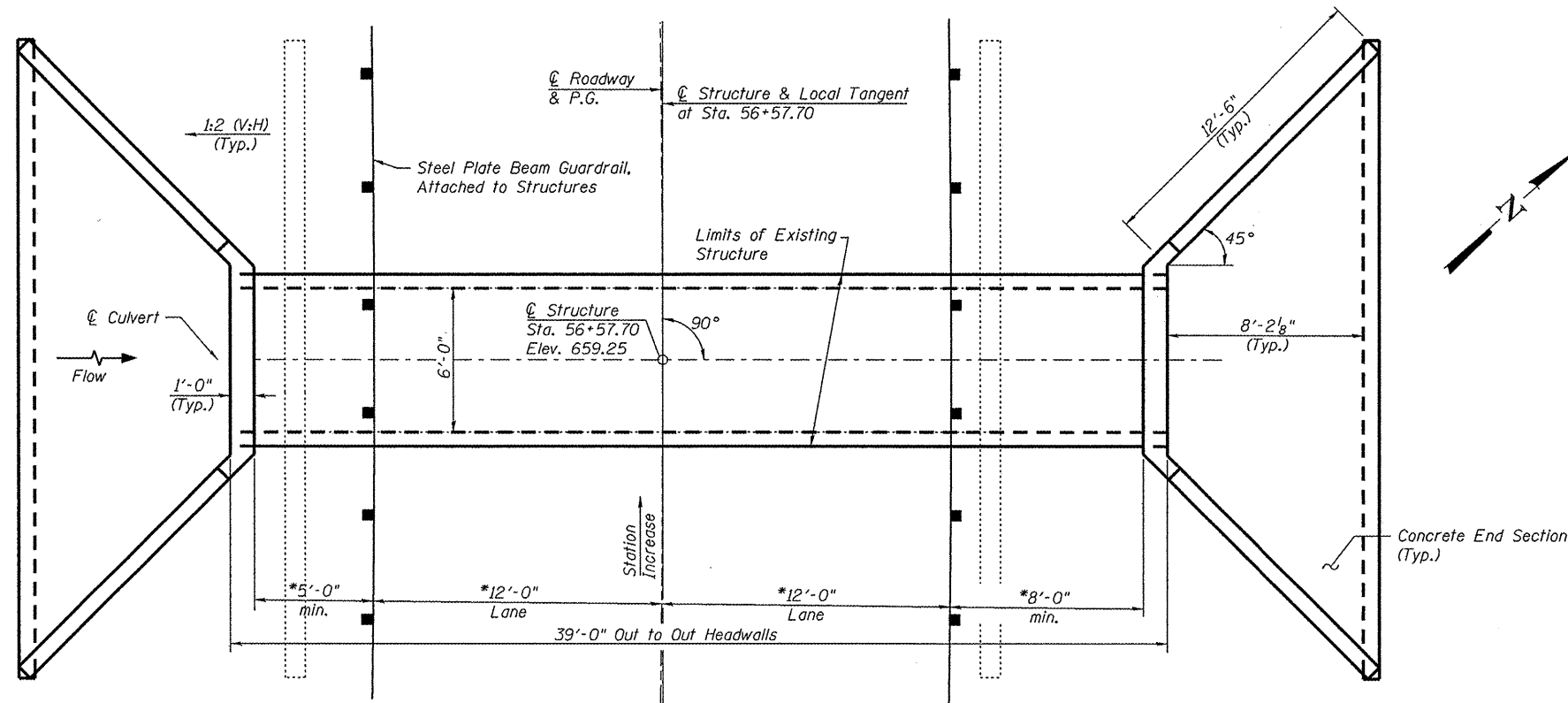
No Salvage

STATE OF ILLINOIS
DEPARTMENT OF TRANSPORTATION



LONGITUDINAL SECTION

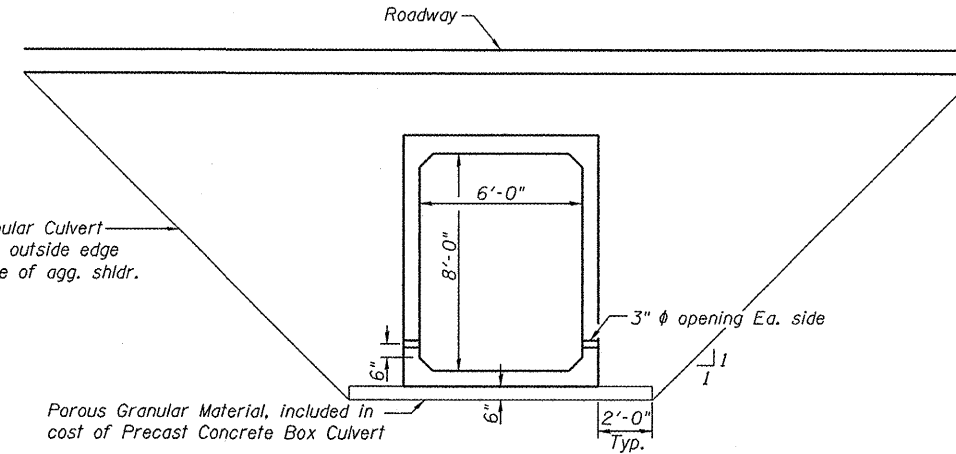
(Dimensions at Rt. L.'s to local tangent, unless noted otherwise)
(Looking North)



PLAN

◆ Boring 1 SE Corner

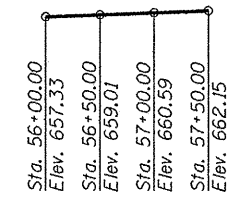
*Measured radially



SECTION THRU BARREL

Limits of Granular Culvert Backfill (Typ.), outside edge to outside edge of agg. shldr.

Porous Granular Material, included in cost of Precast Concrete Box Culvert



PROFILE GRADE
(along C roadway)

CURVE DATA

Δ = 55° 02' 56" (LT)
D = 5° 30' 35"
T = 541.90'
L = 999.12'
E = 132.72'
R = 1039.90'
S.E. = Match Existing
P.C. = Sta. 55+30.30
P.T. = Sta. 65+29.42
P.I. = Sta. 60+72.20

LOADING HS20-44
Allow 50#/sq. ft. for future wearing surface.

DESIGN SPECIFICATIONS
2002 AASHTO

DESIGN STRESSES

FIELD UNITS

f'c = 3,500 psi
fy = 60,000 psi (reinforcement)

PRECAST UNITS

f'c = 5,000 psi
fy = 65,000 psi (welded wire fabric)

GENERAL NOTES

1. Precast Concrete Box Culvert Sections shall conform to requirement of Article 540.06 of the Standard Specifications and the applicable requirements of AASHTO M 273.
2. Reinforcement bars shall conform to the requirements of ASTM A 706 Gr. 60. See Special Provisions.
3. Reinforcement bars designated (E) shall be epoxy coated.
4. Lifting holes shall be filled with concrete plugs and mastic after box sections are in place.

BILL OF MATERIAL

ITEM	UNIT	TOTAL
Precast Concrete Box Culvert 6'x 8'	Foot	39.0
Removal of Existing Structures	Each	1
Box Culvert End Sections	Each	2
Granular Culvert Backfill	Cu. Yd.	222.3



Michael T. Haley 10-1-09
Michael T. Haley
Licensed Structural Engineer
State of Illinois No. 81-5991
Expires 11/30/2010

CULVERT DETAILS
STATION 56+57.70

Lin Engineering, Ltd.
Consulting Engineers
Chatham, Illinois

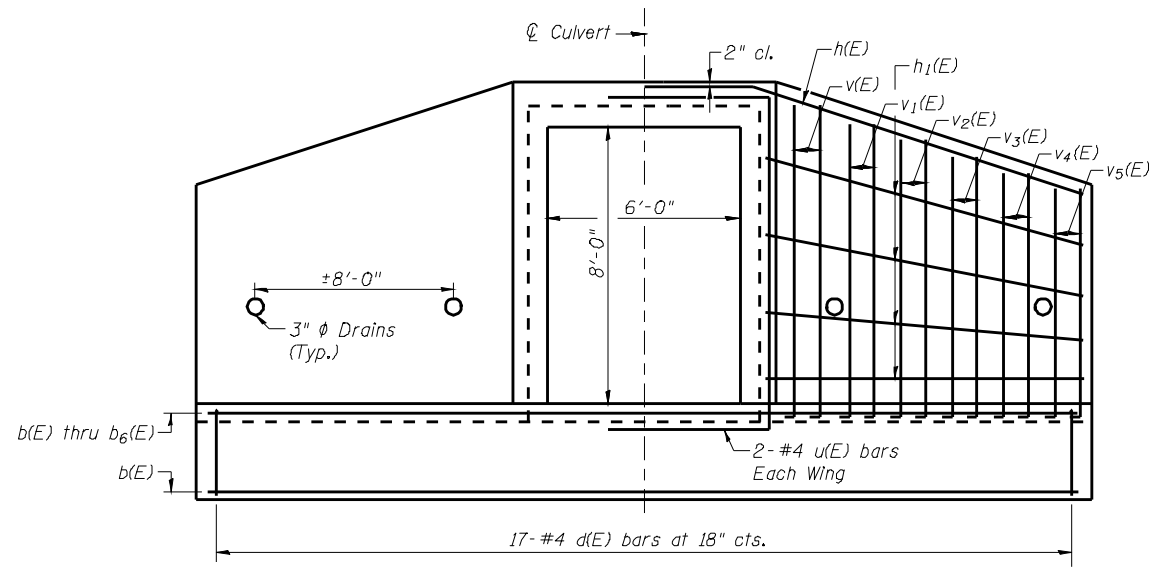
Designed By: ADB
Checked By: MTH
Date: 12/2008

Drawn By: TBP
File: 068-7030.dgn

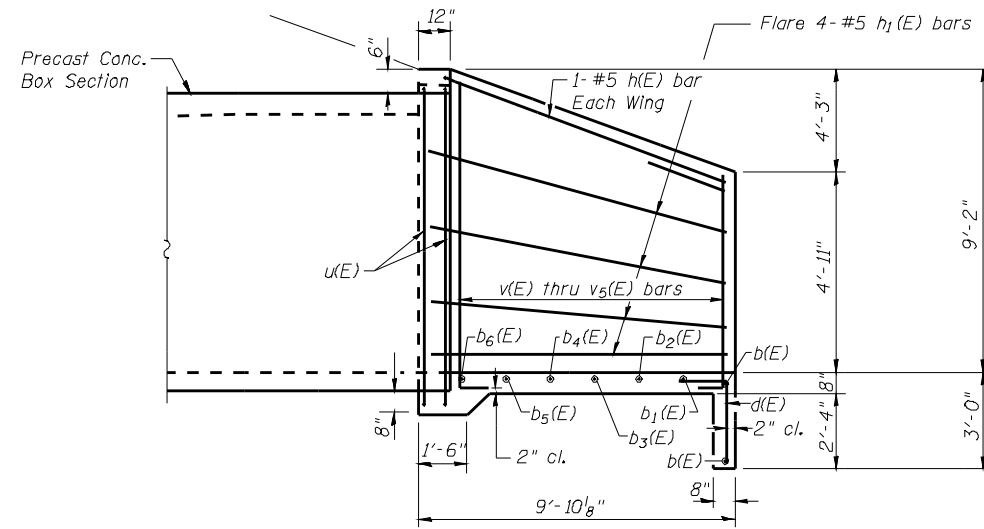
SHEET NO. 1
3 SHEETS

S.B.I. RTE.	SECTION	COUNTY	TOTAL SHEETS	SHEET NO.
16A	(21[FR*1])ACB	MONTGOMERY	20	13
CONTRACT NO. 72B73				
FED. ROAD DIST. NO. ILLINOIS FED. AID PROJECT				

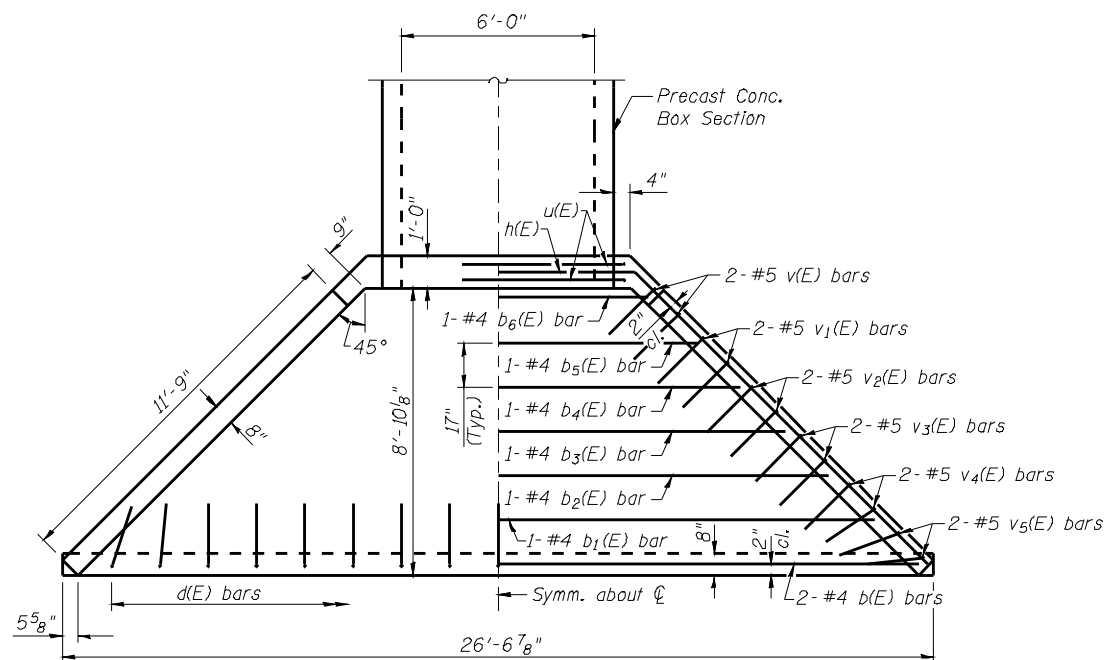
STATE OF ILLINOIS
DEPARTMENT OF TRANSPORTATION



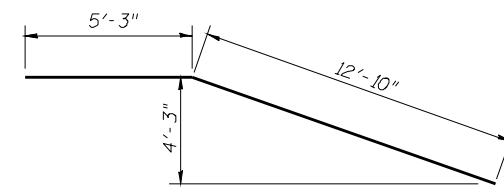
END ELEVATION



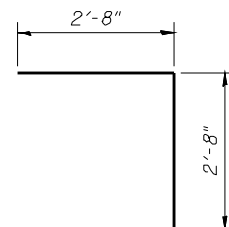
HALF SIDE SECTION



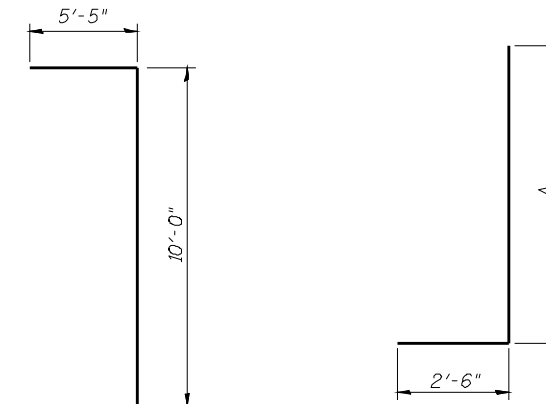
PLAN



BAR h(E)



BAR d(E)



BARS v(E) THRU v5(E)

*** BILL OF MATERIAL**

(2-End Sections)

Bar	No.	Size	Length	Shape
b(E)	4	#4	26'-3"	—
b1(E)	2	#4	24'-0"	—
b2(E)	2	#4	21'-2"	—
b3(E)	2	#4	18'-4"	—
b4(E)	2	#4	15'-6"	—
b5(E)	2	#4	12'-8"	—
b6(E)	2	#4	9'-10"	—
d(E)	34	#4	5'-4"	└
h(E)	4	#5	18'-1"	└
h1(E)	16	#5	12'-3"	—
u(E)	8	#4	20'-10"	└
v(E)	8	#5	11'-6"	└
v1(E)	8	#5	10'-9"	└
v2(E)	8	#5	10'-0"	└
v3(E)	8	#5	9'-3"	└
v4(E)	8	#5	8'-6"	└
v5(E)	8	#5	7'-9"	└
Class SI Concrete			Cu. Yd.	26.3
Reinforcement Bars, Epoxy Coated			Pound	1200

* For Information only

Bar	A
v(E)	9'-0"
v1(E)	8'-3"
v2(E)	7'-6"
v3(E)	6'-9"
v4(E)	6'-0"
v5(E)	5'-3"

* Cut or bend to fit

**CULVERT DETAILS
STATION 56+57.70**

Lin Engineering, Ltd.
Consulting Engineers
Chatham, Illinois

Designed By: ADB
Checked By: MTH
Date: 12/2008

File: 069-7030.dgn

Drawn By: TBP

SHEET NO. 2
3 SHEETS

S.B.I. RTE.	SECTION	COUNTY	TOTAL SHEETS	SHEET NO.
16A	(21[FR#1])ACB	MONTGOMERY	20	14
CONTRACT NO. 72B73				
FED. ROAD DIST. NO.		ILLINOIS	FED. AID PROJECT	

STATE OF ILLINOIS
DEPARTMENT OF TRANSPORTATION



SOIL BORING LOG

Page 1 of 1

ROUTE SH 16A DESCRIPTION SH 16A (Old IL 18, Cross Circle) over a Tributary to Great Creek LOGGED BY M. Tappan Date 4/2008

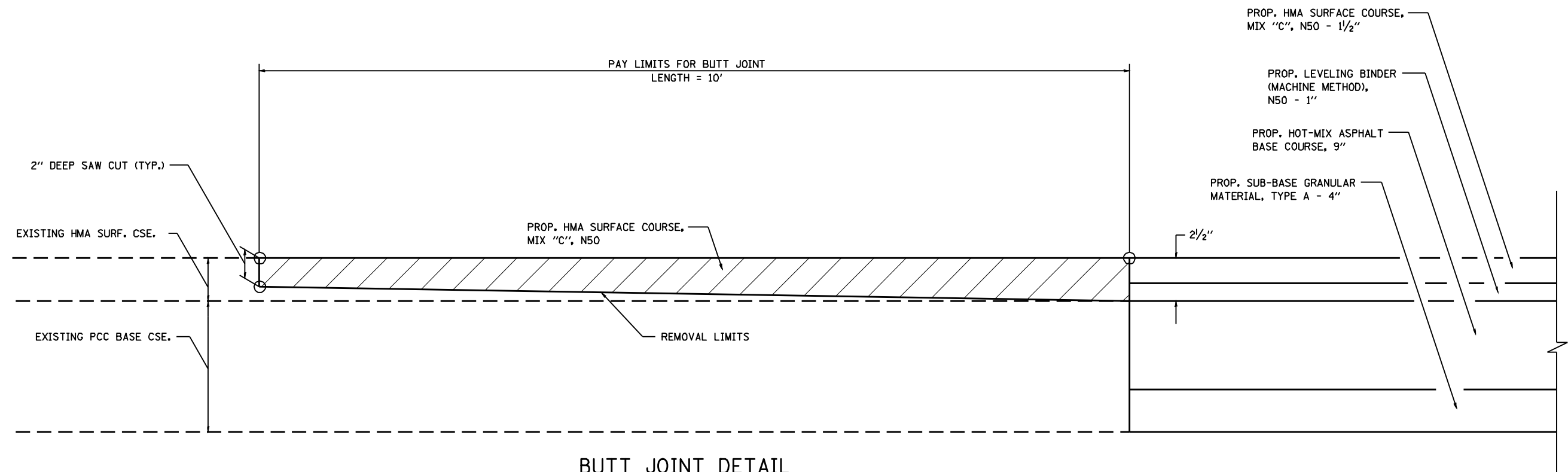
SECTION NE 14, SEC. 8, TWP. 2 S N, R. 4 W, S 30M

COUNTY Montgomery DRILLING METHOD EHA HAMMER TYPE 140# Auto

STRUCT. NO.	Station	D	B	U	M	Surface Water Elev.	D	B	U	M
068-7080 Pr	56+88 +/-					648.2 ft				
						Stream Bed Elev.				
						648.2 ft				
BORING NO.	1 SE Corner					Groundwater Elev.:				
Station	56+88					<input checked="" type="checkbox"/> First Encounter	No Encounter			
Office	14.08.14					<input checked="" type="checkbox"/> Upon Completion	Dry			
Ground Surface Elev.	668.5 ft	(D)	(B)	(U)	(M)	<input checked="" type="checkbox"/> After	First	Plugged		
Light Brown and Gray Moist SILTY LOAM to Grayish Brown Moist SILTY CLAY		1				Light Blue Gray and Brown Moist CLAY (Till) (continued)				
		2	1.1	17						
		3	B							
	668.80									
Grayish Brown Moist CLAY LOAM (Till)		4								
		5	1.2	14						
		6	S-10							
	668.80					Boring Completed				
		1				Refer STA to P.C. 65+30.30				
		5	2.2	17		STA increases to West				
		6	B			Refer Elevation to BM T&M2, Chained Square on NE Headwall				
						BM T&M2=669.2'				
		1								
		3	1.0	13						
		4	B							
V. Moist		1								
		2	0.6	19						
		2	B							
	646.80									
Light Blue Gray and Brown Moist CLAY (Till)		4								
		6	4.6	17						
		10	S-12							
		1								
		4	4.2	16						
		9	B							
		2								
		5	4.0	16						
		10	B							

The Unconfined Compressive Strength (UCS) Failure Mode is indicated by (S-Beige, S-Shear, P-Penetrometer, E-Estimated)
 Abbreviations W.O.H - Sampler Advanced By Weight of Hammer, W.O.P - Advanced by Weight of Pipe, B.S. - Before Sealing
 The SPT (N value) is the sum of the last two blow values in each sampling zone (ASTM D 1586, from 137 (Rev. 8-99))

LIN ENGINEERING, LTD. Consulting Engineers Chatham, Illinois	SHEET NO. 3	S.B.I. RTE.	SECTION	COUNTY	TOTAL SHEETS	SHEET NO.
	3 SHEETS	16A	(21[FR#1])ACB	MONTGOMERY	20	15
		CONTRACT NO. 72B73				
		FED. ROAD DIST. NO. ILLINOIS FED. AID PROJECT				



BUTT JOINT DETAIL

STA. 56+25.00 TO STA. 56+35.00
 STA. 56+80.00 TO STA. 56+90.00

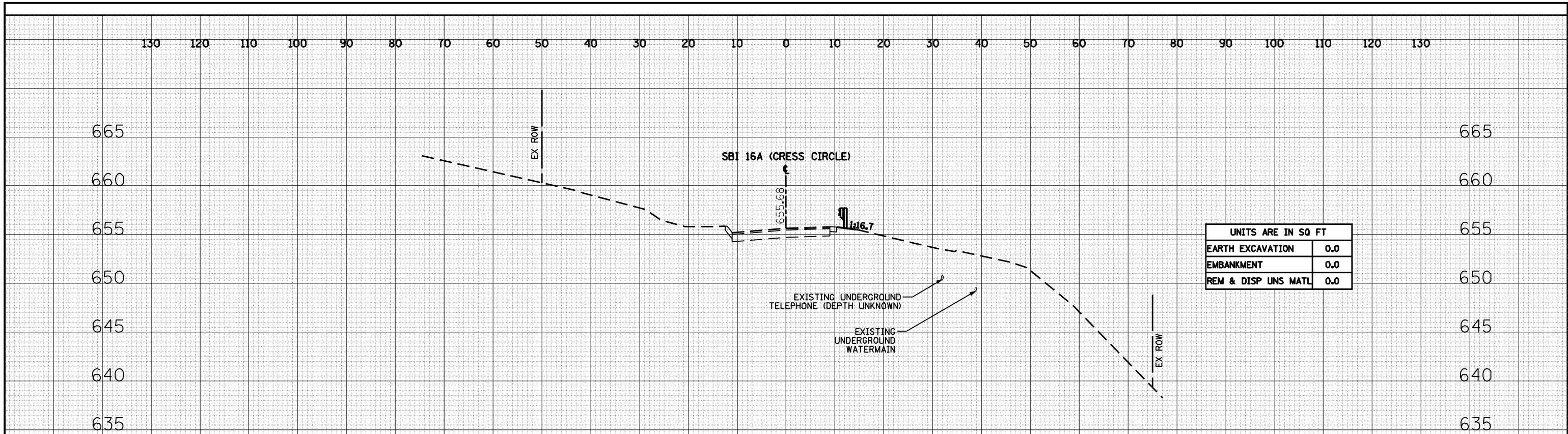
NOTES FOR BUTT JOINT:

1. THE WORK SHALL BE DONE IN ACCORDANCE WITH ARTICLE 406.08.
2. SURFACE REMOVAL FOR BUTT JOINTS WILL BE PAID FOR AT THE CONTRACT UNIT PRICE PER SQUARE YARD FOR HOT-MIX ASPHALT SURFACE REMOVAL - BUTT JOINT. THE WORK SHALL BE PERFORMED IN ACCORDANCE WITH THE APPLICABLE PORTIONS OF SECTION 406.
3. THE SAW CUT JOINT AND THE BASE SHALL BE PRIMED JUST PRIOR TO THE PLACING OF HOT MIX ASPHALT MATERIAL. THE WORK WILL BE IN ACCORDANCE WITH THE APPLICABLE PORTIONS OF ARTICLE 406.06. THE HOT-MIX ASPHALT SURFACE REMOVAL - BUTT JOINT PAY ITEM INCLUDES BOTH THE SAW CUT & PRIME COAT.
4. THE PAVEMENT SURFACE TO BE REMOVED MAY BE EITHER HMA OR P.C. CONCRETE. THE WORK SHALL BE PERFORMED IN ACCORDANCE WITH ARTICLE 440.04.
5. TRANSITION PROPOSED PAVEMENT AND SHOULDER WIDTHS FROM STA. 56+25.00 TO STA. 56+35.00 AND FROM STA. 56+80.00 TO STA. 56+90.00.

FILE NAME =	USER NAME = laughlinr1	DESIGNED - DMM	REVISED -	STATE OF ILLINOIS DEPARTMENT OF TRANSPORTATION	BUTT JOINT DETAIL ROUTE SBI 16A (CRESS CIRCLE)			F.A.U. RTE.	SECTION	COUNTY	TOTAL SHEETS	SHEET NO.	
ca:\pwwork\pwwid001\LAUGHLINRL\0156219\0722873-sht-detail.dgn		DRAWN - DMM	REVISED -		SCALE: N.T.S.	SHEET NO.	OF SHEETS	STA.	TO STA.	(21IFR*1)ACB	MONTGOMERY	20	16
PLOT SCALE = 100.0000' / IN.		CHECKED - FML	REVISED -										
PLOT DATE = Jul-24-2009 10:39:31AM		DATE - 01/2009	REVISED -										
										CONTRACT NO. 72B73			
										FED. ROAD DIST. NO. ILLINOIS FED. AID PROJECT			

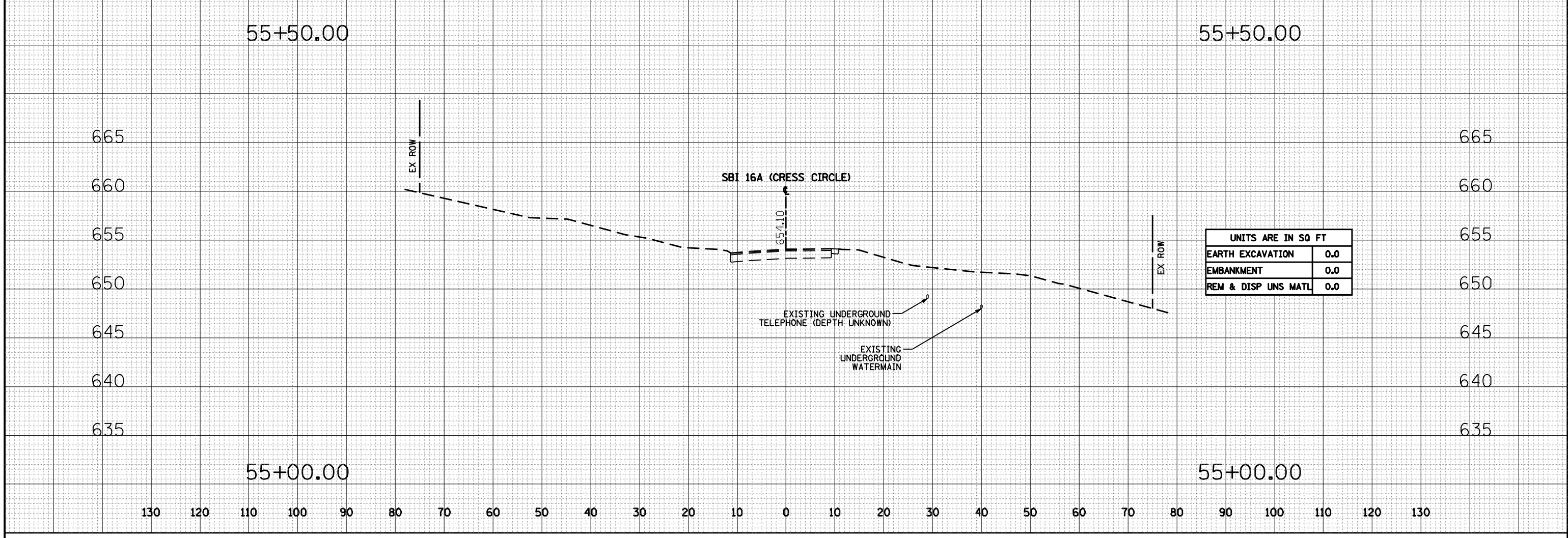
DATE	
BY	
FINAL SURVEY NO.	
SPRINKLED PLOTTED AREAS CHECKED	
NOTE BOOK NO.	
TEMPLATE AREAS CHECKED	

DATE	
BY	
ORIGINAL SURVEY NO.	
SPRINKLED PLOTTED AREAS CHECKED	
NOTE BOOK NO.	
TEMPLATE AREAS CHECKED	



55+50.00

55+50.00



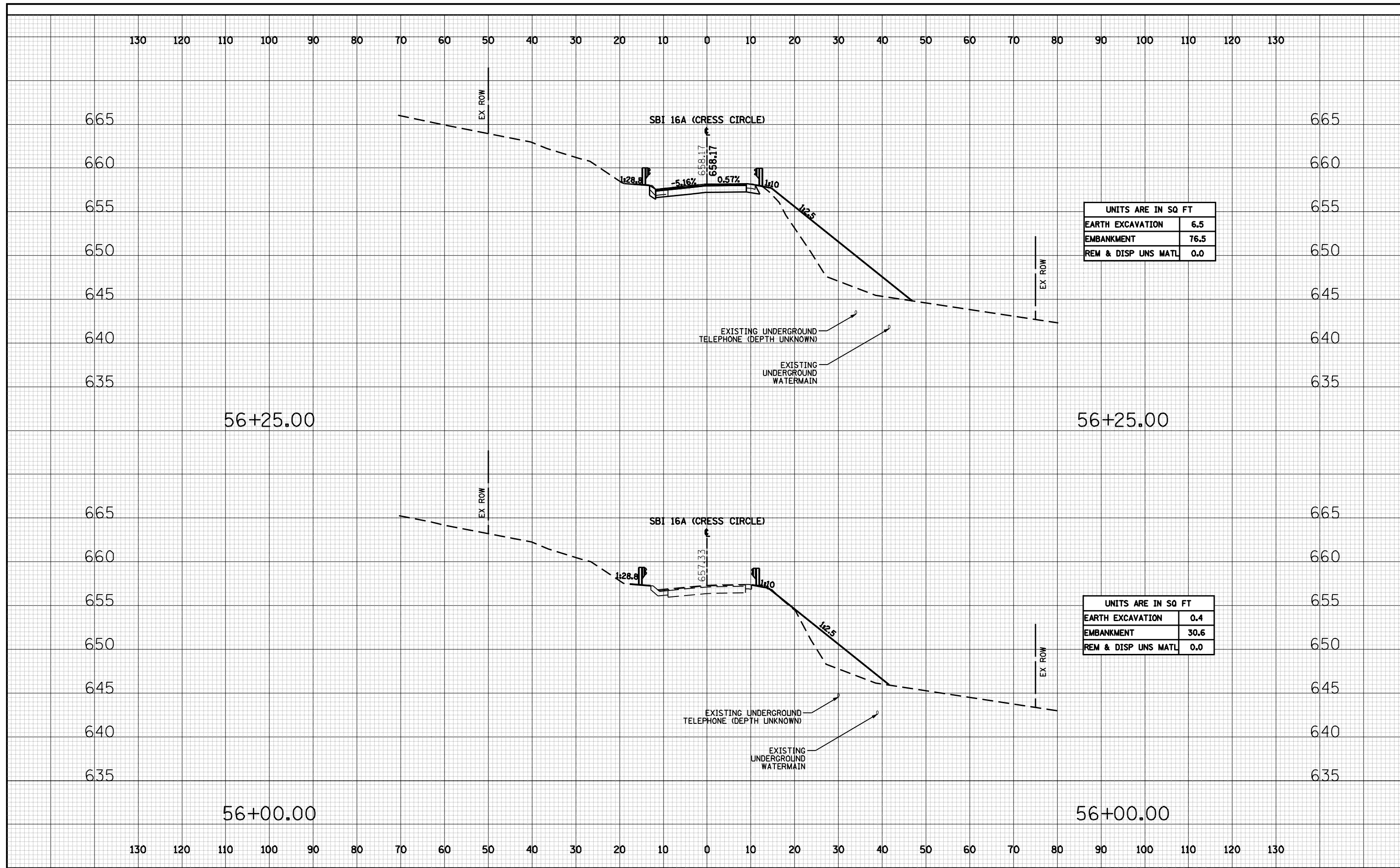
55+00.00

55+00.00

FILE NAME =	USER NAME = laughlinr1	DESIGNED - DMM	REVISED -	STATE OF ILLINOIS DEPARTMENT OF TRANSPORTATION	CROSS SECTIONS ROUTE SBI 16A (CRESS CIRCLE)			F.A. RTE.	SECTION	COUNTY	TOTAL SHEETS	SHEET NO.	
of:\pwork\pwidot\LAUGHLINR1\0156219\0672873-ght-xshwdgn		DRAWN - DMM	REVISED -		SCALE: H1"=10', V1"=5'	SHEET NO.	OF	SHEETS	STA. 55+00.00 TO STA. 55+50.00	(21[FR*1])ACB	MONTGOMERY	20	17
PLOT SCALE = 20.0000" / IN.		CHECKED - FL	REVISED -							CONTRACT NO. 72B73			
PLOT DATE = Jul-24-2009 10:39:33AM		DATE - 10/2008	REVISED -							FED. ROAD DIST. NO.	ILLINOIS FED. AID PROJECT		

DATE	
BY	
FINAL SURVEY NO.	
SPRINKLED PLOTTED AREAS CHECKED	
NOTE BOOK NO.	
TEMPLATE AREAS CHECKED	

DATE	
BY	
ORIGINAL SURVEY NO.	
SPRINKLED PLOTTED AREAS CHECKED	
NOTE BOOK NO.	
TEMPLATE AREAS CHECKED	

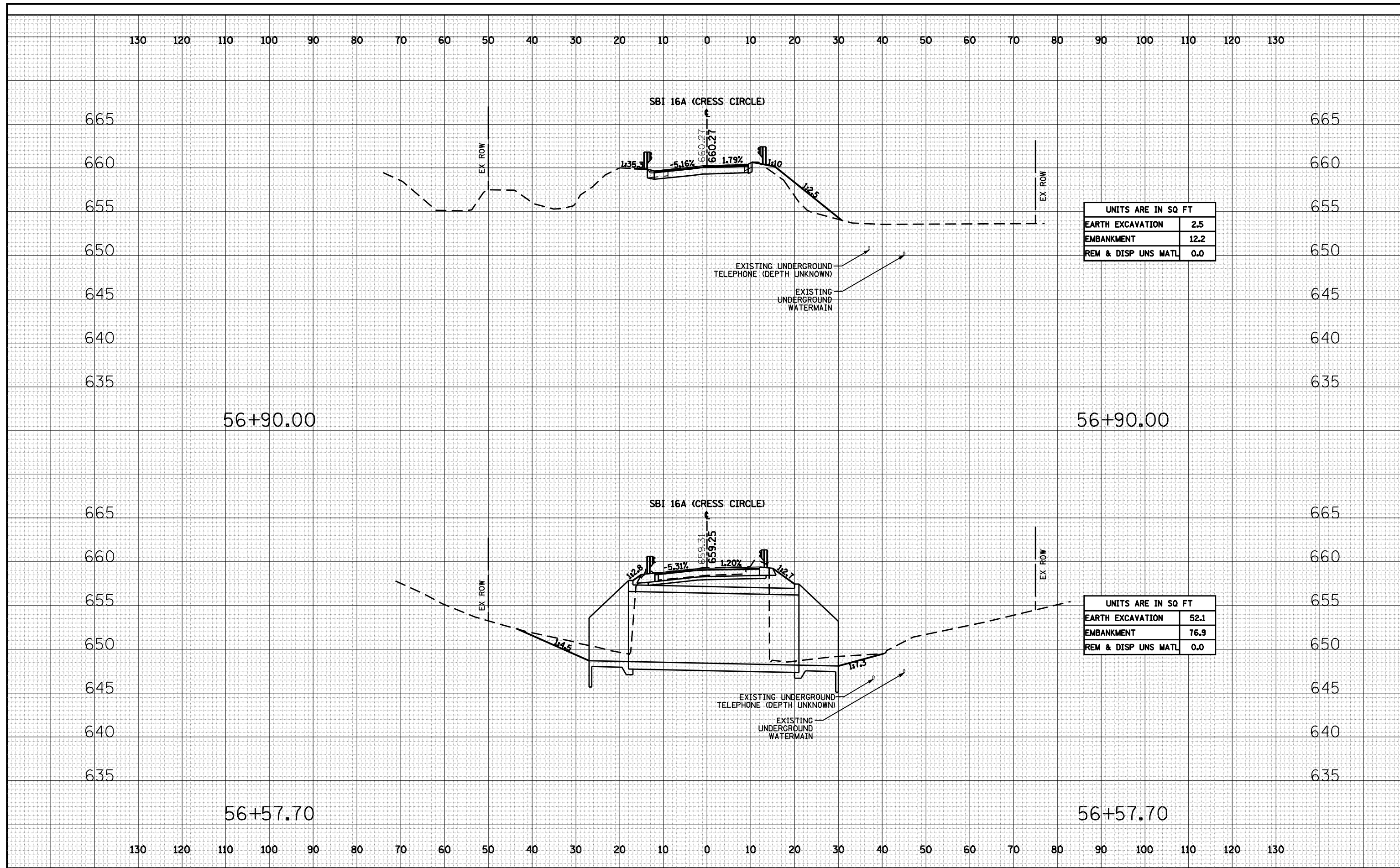


UNITS ARE IN SQ FT	
EARTH EXCAVATION	6.5
EMBANKMENT	76.5
REM & DISP UNS MATL	0.0

UNITS ARE IN SQ FT	
EARTH EXCAVATION	0.4
EMBANKMENT	30.6
REM & DISP UNS MATL	0.0

DATE	
BY	
FINAL SURVEY NO.	
SPRINKLED PLOTTED AREAS CHECKED	
NOTE BOOK NO.	
TEMPLATE AREAS CHECKED	

DATE	
BY	
ORIGINAL SURVEY NO.	
SPRINKLED PLOTTED AREAS CHECKED	
NOTE BOOK NO.	
TEMPLATE AREAS CHECKED	

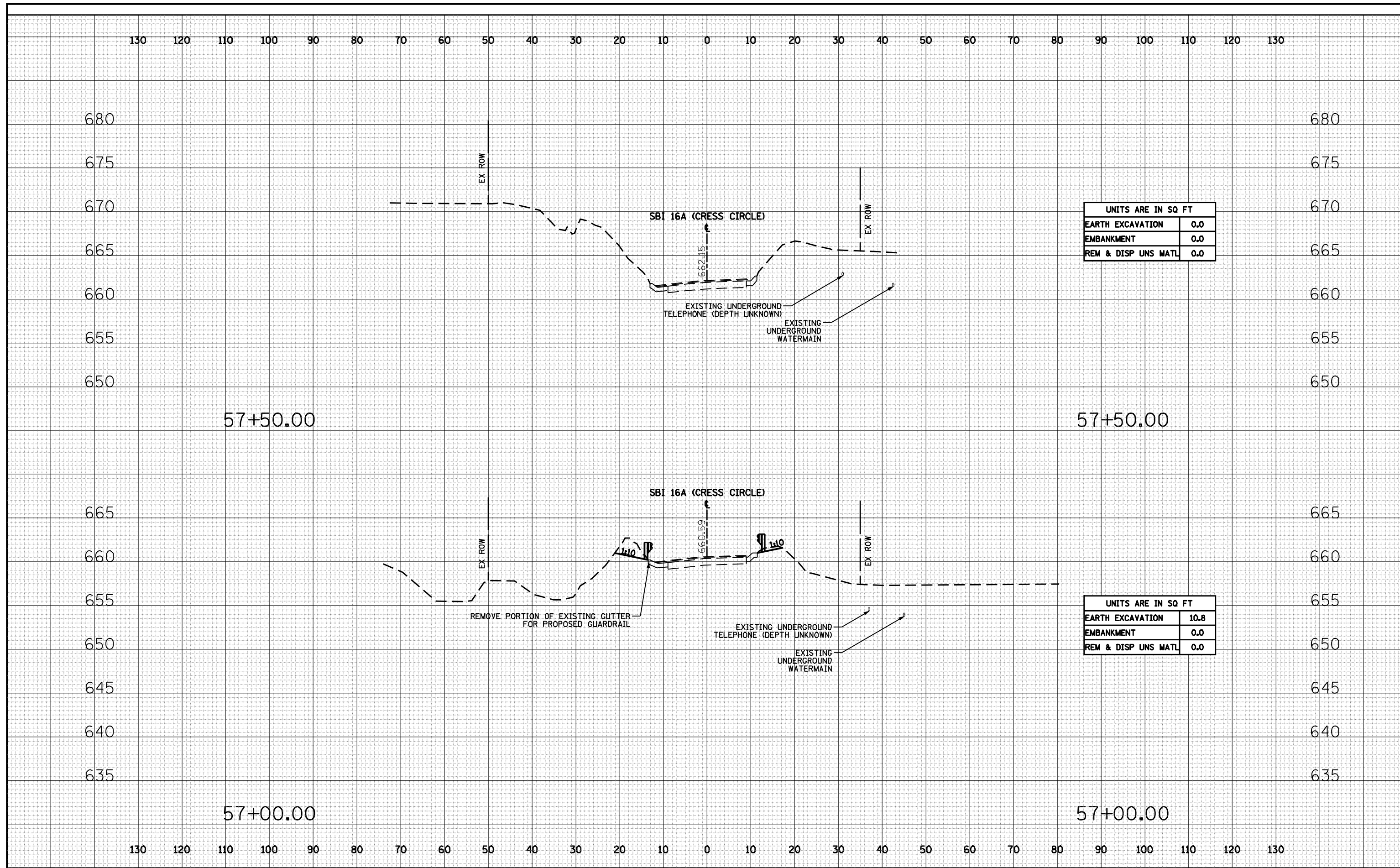


UNITS ARE IN SQ FT	
EARTH EXCAVATION	2.5
EMBANKMENT	12.2
REM & DISP UNS MATL	0.0

UNITS ARE IN SQ FT	
EARTH EXCAVATION	52.1
EMBANKMENT	76.9
REM & DISP UNS MATL	0.0

DATE	
BY	
FINAL SURVEY NO.	
SPRINKLED PLOTTED	
TEMPLATE AREAS CHECKED	
NOTE BOOK NO.	

DATE	
BY	
ORIGINAL SURVEY NO.	
SPRINKLED PLOTTED	
TEMPLATE AREAS CHECKED	
NOTE BOOK NO.	



UNITS ARE IN SQ FT	
EARTH EXCAVATION	0.0
EMBANKMENT	0.0
REM & DISP UNS MATL	0.0

UNITS ARE IN SQ FT	
EARTH EXCAVATION	10.8
EMBANKMENT	0.0
REM & DISP UNS MATL	0.0