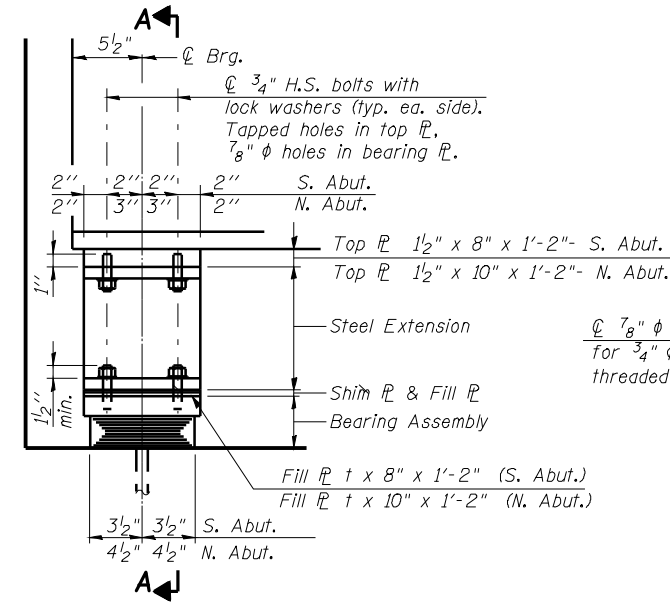
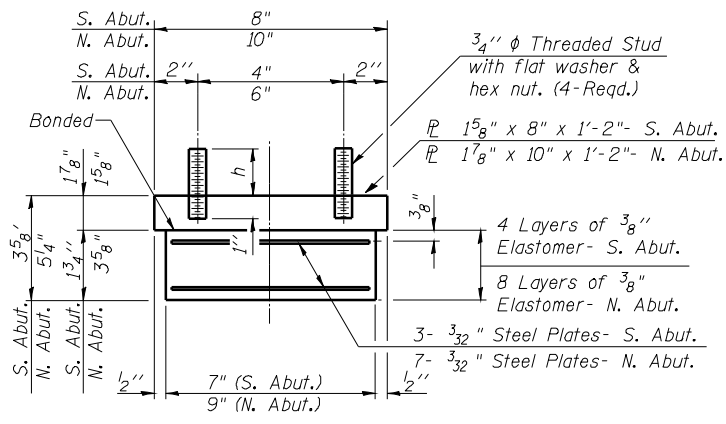


STATE OF ILLINOIS
DEPARTMENT OF TRANSPORTATION

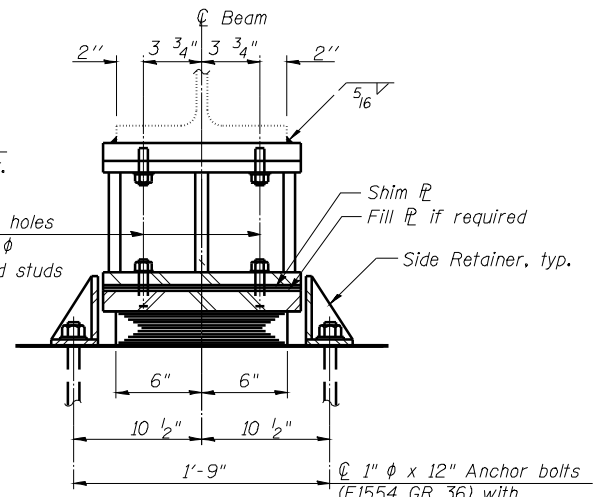


ELEVATION AT ABUT.

TYPE I ELASTOMERIC EXP. BRG.



BEARING ASSEMBLY



SECTION A-A

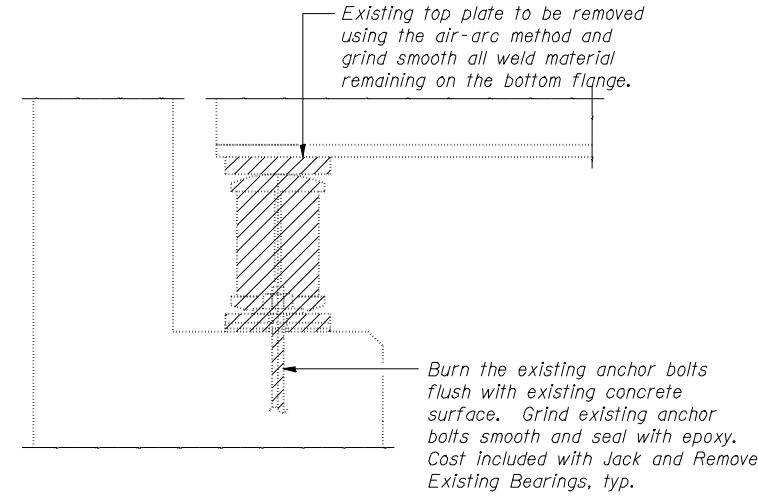
Notes:
Anchor bolts shall be ASTM F1554 all-thread (or an Engineer-approved alternate material) of the grade(s) and diameter(s) specified. ASTM A307 Grade C anchor bolts may be used in lieu of ASTM F1554 Grade 36 (Fy=36ksi). The corresponding specified grade of AASHTO M314 anchor bolts may be used in lieu of ASTM F1554.
Anchor bolts at fixed bearings may be either cast in place or installed in holes drilled after the supported member is in place.
Anchor bolts for side retainers may be cast in place or installed in holes drilled before or after members are in place.
Drilled and set anchor bolts shall be installed according to Article 521.06 of the Standard Specifications.
Side retainers and other steel members required for the bearing assembly shall be included in the cost of Elastomeric Bearing Assembly, Type I.
Two 1/8 in. adjusting shims shall be provided for each bearing in addition to all other plates or shims and placed as shown on bearing details.

"t" Dimensions

Location (Beam No.)	S. Abut.	N. Abut.
1	0	1/2'
2	3/8"	0
3	3/4"	3/4"
4	5/8"	1 1/4"
5	0	3/8"
6	0	3/8"

"h" Dimensions

Location (Beam No.)	S. Abut.	N. Abut.
1	2 3/4"	3 1/4"
2	3"	2 3/4"
3	3 1/2"	2 5/8"
4	3 3/8"	4'
5	2 5/8"	2 1/8"
6	2 3/4"	2 1/8"



EXISTING ABUTMENT BEARING REMOVAL

JACK AND REMOVE EXISTING BEARING PROCEDURE

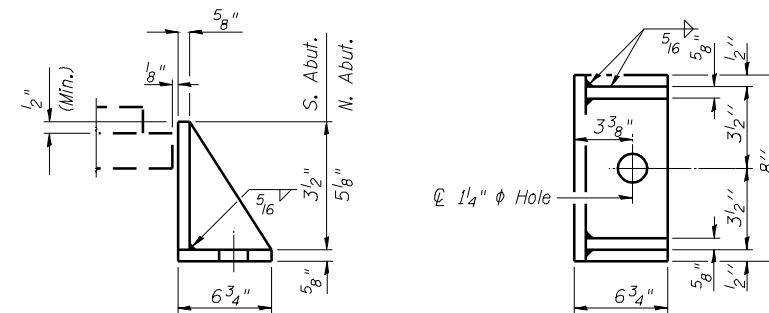
(North and South Abutments)

1. The Contractor shall submit for approval by the Engineer, plans for jacking existing beams and installing new bearings prior to commencing any related work.
2. Jacking and removing existing bearings shall be done after existing concrete deck is removed and prior to pouring the concrete deck.
3. Prior to ordering any material, the Contractor shall verify steel extension height and shim plate thickness required at each bearing so that total height of new bearing, steel extension and fill matches height of existing bearing and shim.
4. There shall be at least one jack per bearing, and the Jack shall be placed close to the bearings.
5. For limitations on lift amounts, see Special Provisions.
6. The maximum dead load reaction per beam (weight of steel only) at South and North Abutments is 3.2 kips. Minimum Jack capacity is 5 Kips for South and North Abutments.
7. The new bearing and steel extensions shall be in place and the jacks shall be lowered before the new concrete deck is poured.
8. Jacking against diaphragms is prohibited.

Note:

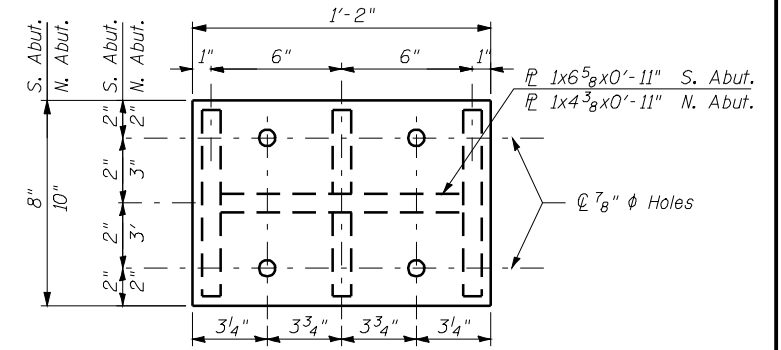
Shim plates shall not be placed under Bearing Assembly.

Prior to ordering any material, the Contractor shall verify in the field all bearing height and shim thickness dimensions.

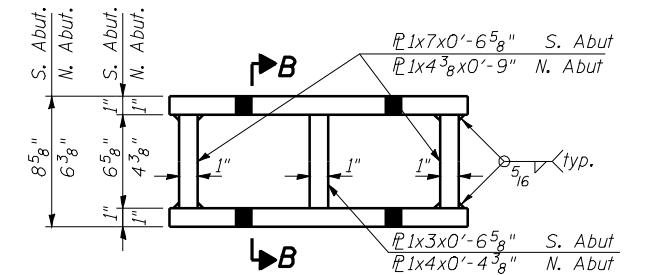


SIDE RETAINER

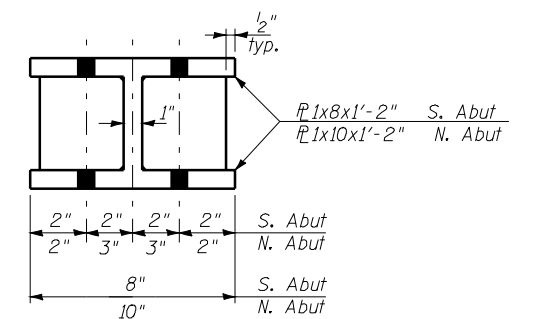
Equivalent rolled angle with stiffeners will be allowed in lieu of welded plates.



PLAN TOP AND BOTTOM PLATE



STEEL EXTENSION DETAIL



SECTION B-B

BILL OF MATERIAL

Item	Unit	Total
Elastomeric Bearing Assembly Type 1	Each	12
Jack and Remove Existing Bearings	Each	12
Anchor Bolts, 1"	Each	24

BEARING DETAILS
STRUCTURE NO. 085-0001

DESIGNED	CMW
CHECKED	JSA
DRAWN	TJW
CHECKED	CMW

HOELSCHER ENGINEERING

11 Executive Drive Suite 12
Fairview Heights, Illinois 62208
(618) 624-8610
(618) 624-8611 (fax)

2501 Chatham Road, Suite 120
Springfield, Illinois 62704
(217) 698-8610
(217) 698-8608 (fax)

115 North Neil Street, Suite 105
Champaign, Illinois 61820
(217) 351-8610
(217) 351-8611 (fax)

SHEET NO. 16	F.A. RTE. 310 (US 67)	SECTION (87B) BR	COUNTY SCHUYLER	TOTAL SHEETS 80	SHEET NO. 57
20 SHEETS	CONTRACT NO. 72B95		ILLINOIS FED. AID PROJECT		