

STATE OF ILLINOIS
DEPARTMENT OF TRANSPORTATION
DIVISION OF HIGHWAYS

**PROPOSED
HIGHWAY PLANS**

FAP ROUTE 658 (IL 29)
SECTION D6 RUMBLE STRIP, MRKING 2010

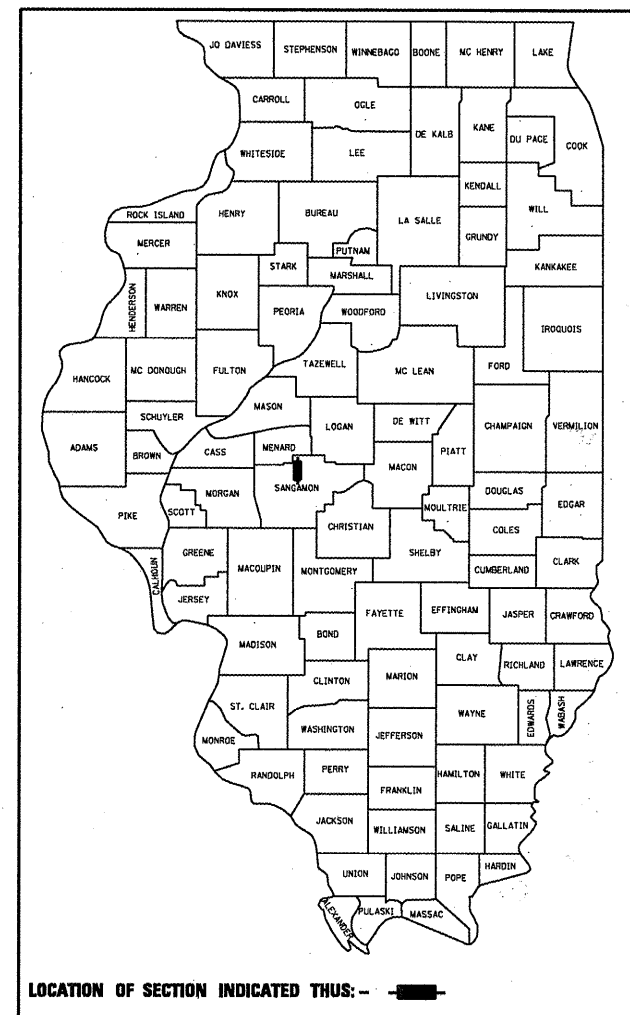
SANGAMON COUNTY

C-96-123-10

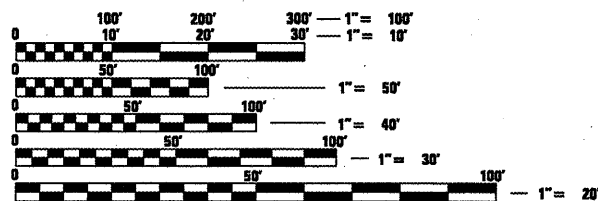
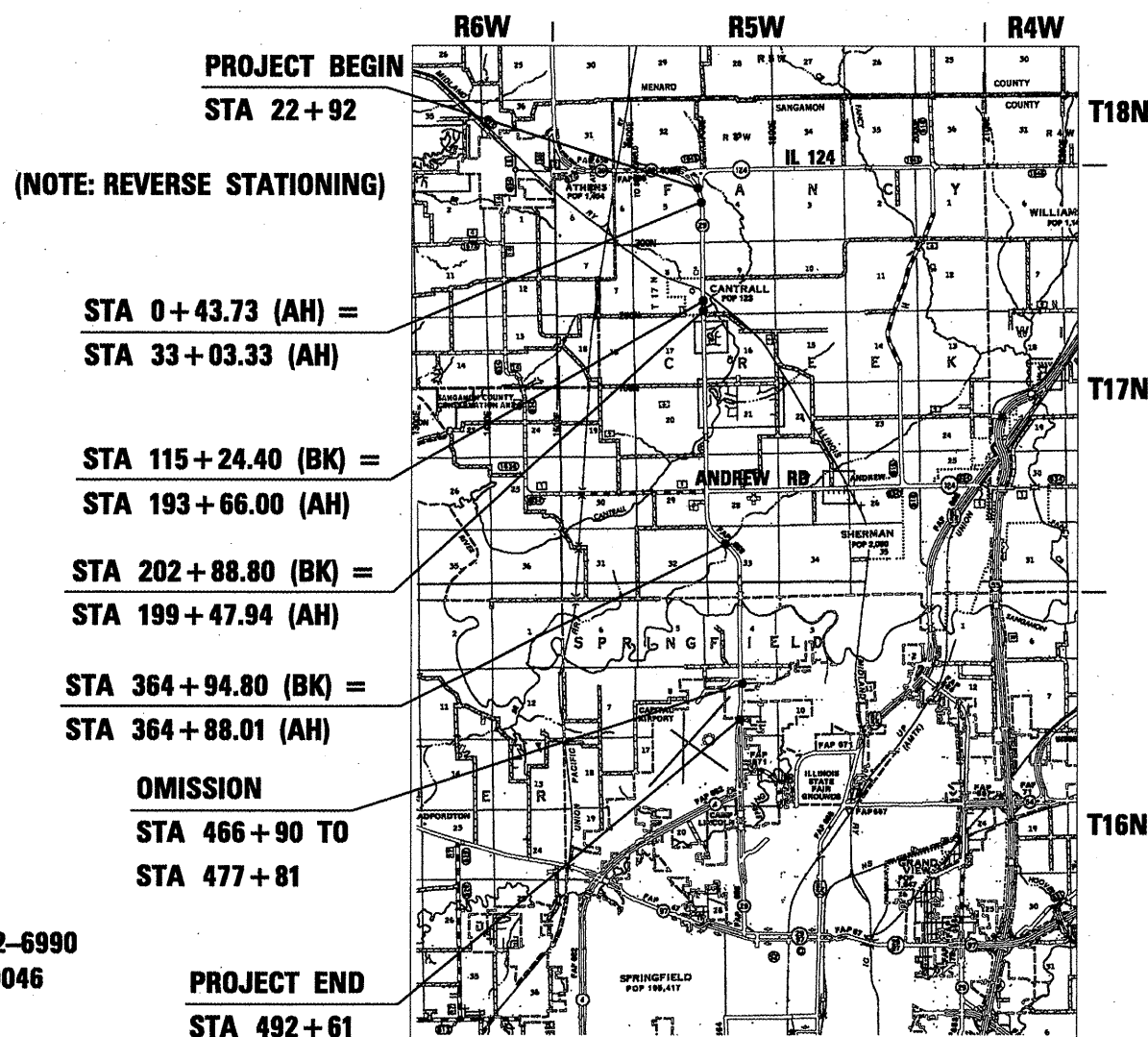
F.A.P. RTE.	SECTION	COUNTY	TOTAL SHEETS	SHEET NO.
658	.	.	16	1
		ILLINOIS	CONTRACT NO. 72D19	

* D6 RUMBLESTRIP, MRKING 2010
SANGAMON

D-96-123-10



FOR INDEX OF SHEETS, SEE SHEET NO. 02



FULL SIZE PLANS HAVE BEEN PREPARED USING STANDARD ENGINEERING SCALES. REDUCED SIZED PLANS WILL NOT CONFORM TO STANDARD SCALES. IN MAKING MEASUREMENTS ON REDUCED PLANS, THE ABOVE SCALES MAY BE USED.

J.U.L.I.E.
JOINT UTILITY LOCATION INFORMATION FOR EXCAVATION
1-800-892-0123
OR 811

PROJECT ENGINEER JOHN NEGANGARD 217-782-6990
PROJECT MANAGER VINCE MADONIA 217-785-9046

CONTRACT NO. 72D19

GROSS LENGTH = 40,712 FT. = 7.71 MILE
NET LENGTH = 39,921 FT. = 7.50 MILE

STATE OF ILLINOIS
DEPARTMENT OF TRANSPORTATION
DIVISION OF HIGHWAYS

SUBMITTED August 31, 2009
Rosa D. O'Neil
DEPUTY DIRECTOR OF HIGHWAYS, REGION ENGINEER

October 2, 2009
Charles J. Ingwersoll
ENGINEER OF DESIGN AND ENVIRONMENT

October 2, 2009
Christine M. Reed
DIRECTOR OF HIGHWAYS, CHIEF ENGINEER

**PRINTED BY THE AUTHORITY
OF THE STATE OF ILLINOIS**

GENERAL NOTES AND COMMENTS

1. ALL ENTRANCES CURRENTLY IN USE SHALL REMAIN ACCESSIBLE BOTH DURING AND AFTER CONSTRUCTION.
2. NO LANE CLOSURES WILL BE ALLOWED WITHOUT FLAGGER PROTECTION AND NO WORK OR LANE CLOSURES PRIOR TO 9:00 AM OR AFTER 3:30 PM
3. FIELD/RESIDENT ENGINEER SHALL COORDINATE WITH OPERATION TO VERIFY NO PASSING ZONES, BUT SHALL CONTACT STUDIES & PLANS CONCERNING COMMITMENTS AND REASONS FOR PROPOSED CHANGES IN NO PASSING ZONES FROM PREVIOUS PAVEMENT MARKINGS.
4. THERE SHALL BE NO LANE CLOSURES WITHIN THE LIMITS OF THIS PROJECT DURING THE ILLINOIS STATE FAIR.

COMMITMENTS

THE FIELD/RESIDENT ENGINEER SHALL CONTACT STUDIES AND PLANS CONCERNING ANY MAJOR PLAN CHANGES TO MAKE SURE NO PREVIOUS COMMITMENTS (NOT LISTED) WERE MADE AFFECTING THE DESIGN, AND ALLOW AN IMPROVED DESIGN FOR FUTURE PROJECTS.

EXPERIMENTAL FEATURES - CENTERLINE RUMBLE STRIPS & SHOULDER RUMBLE STRIPS ON TWO-LANE RURAL HIGHWAY.

PROPOSED SCOPE OF WORK - REP. POE.

INDEX OF SHEETS

- 1 COVER SHEET
- 2 GENERAL NOTES
- 3 SUMMARY OF QUANTITIES
- 4-5 SCHEDULES
- 6-13 LINE DIAGRAM
- 14-15 INTERSECTION MARKING DETAILS
- 16 RUMBLE STRIP DETAILS

LIST OF STANDARDS

- 701001-02
- 701006-03
- 701011-02
- 701301-03
- 701306-02
- 701311-03
- 701901-01
- 780001-02
- 781001-03

DISTRICT SIX	
EXAMINED <u>Aug 28</u>	20 <u>09</u>
<i>Bonnie Hooper</i>	
OPERATIONS ENGINEER	
EXAMINED <u>Aug 27</u>	20 <u>09</u>
<i>Bonnie Hooper</i>	
PROGRAM IMPLEMENTATION ENGINEER	
EXAMINED <u>August 27</u>	20 <u>09</u>
<i>ARML</i>	
PROGRAM DEVELOPMENT ENGINEER	

• D6 RUMBLESTRIP, MRKING 2010

FILE NAME =	USER NAME = bej	DESIGNED -	REVISED -	STATE OF ILLINOIS DEPARTMENT OF TRANSPORTATION	GENERAL NOTES	F.A.U. RTE.	SECTION	COUNTY	TOTAL SHEETS	SHEET NO.	
at\pwwork\pwwid01\BAJ\d0157369\0672019	shh-gennote.dgn	DRAWN -	REVISED -			658	*	SANGAMON	16	2	
	PLOT SCALE = 100.0000' / IN.	CHECKED -	REVISED -			CONTRACT NO. 72D19					
	PLOT DATE = Aug-28-2009 09:40:05AM	DATE -	REVISED -			ILLINOIS FED. AID PROJECT					
				SCALE:		SHEET NO. OF SHEETS		STA. TO STA.			

100%
STATE

SANGAMON
COUNTY

PAY CODE	DESCRIPTION	UNIT	TOTAL	SFTY-1D
X0326697	CENTER LINE - RUMBLE STRIP - 8"	FOOT	16,888	16,888
X0326698	CENTER LINE - RUMBLE STRIP - 20"	FOOT	18,355	18,355
X7800620	URETHANE PAVEMENT MARKING - LINE 5"	FOOT	114,600	114,600
20100210	TREE REMOVAL (OVER 15 UNITS DIAMETER)	UNIT	23	23
67100100	MOBILIZATION	L SUM	1	1
70100460	TRAFFIC CONTROL AND PROTECTION, STANDARD 701306	L SUM	1	1
* 72400100	REMOVE SIGN PANEL ASSEMBLY - TYPE A	EACH	5	5
* 72400500	RELOCATE SIGN PANEL ASSEMBLY - TYPE A	EACH	1	1
78000300	THERMOPLASTIC PAVEMENT MARKING - LINE 5"	FOOT	7,529	7,529
78000400	THERMOPLASTIC PAVEMENT MARKING - LINE 6"	FOOT	224	224
78000500	THERMOPLASTIC PAVEMENT MARKING - LINE 8"	FOOT	138	138
78000600	THERMOPLASTIC PAVEMENT MARKING - LINE 12"	FOOT	290	290
78003100	PREFORMED PLASTIC PAVEMENT MARKING, TYPE B - LETTERS AND SYMBOLS	SQ FT	62.4	62.4
78003180	PREFORMED PLASTIC PAVEMENT MARKING, TYPE B - LINE 24"	FOOT	128	128
78300100	PAVEMENT MARKING REMOVAL	SQ FT	3,950	3,950

* Specialty Hems

SECTION D6 RUMBLESTRIPS, MRKING 2010

FILE NAME =	USER NAME = laughtlr1	DESIGNED -	REVISED -	STATE OF ILLINOIS DEPARTMENT OF TRANSPORTATION	SUMMARY OF QUANTITIES				F.A.P RTE.	SECTION	COUNTY	TOTAL SHEETS	SHEET NO.	
ei:\pwork\PWIDOT\LAUGHLINRL\0157369\	72019-sh+aoq.dgn	DRAWN -	REVISED -		SCALE:	SHEET NO.	OF	SHEETS	STA.	TO STA.	658	SANGAMON	16	3
	PLOT SCALE = 100.0000 ' / IN.	CHECKED -	REVISED -		CONTRACT NO. 72019									
	PLOT DATE = Aug-20-2009 02:43:48PM	DATE -	REVISED -		ILLINOIS FED. AID PROJECT									

Urethane Pavement Marking - Line 5"

Location	Sta.	Sta.	Pass (ft)	DBL NP (ft)	NBNP (ft)	SBNP (ft)
	492+61	487+06				555
	487+06	477+81		925		
Omission	477+81	466+90				Buckhorn / Estill turn lanes - Omission
	466+90	459+39		751		
	461+07	444+89			1618	
	444+89	443+32		157		
	443+32	433+55				977
	433+55	364+88	6867			
Sta Eq (Ah)	364+88					
Sta Eq (Bk)	364+95					
	364+95	363+31	164			
	363+31	355+18			813	
	355+18	344+59		1059		
	344+59	333+82				1077
	333+82	328+82		500		
Andrew Rd - Thermo	328+82	315+30				Thermo - see schedule
	315+30	310+30				500
	310+30	296+49	1381			
	296+49	286+04		1045		
	286+04	280+20				584
	280+20	265+96	1424			
	265+96	258+68			728	
	258+68	241+19		1749		
	241+19	233+04	815			
	233+04	222+96			1008	
	222+96	199+48		2348		
Sta. Eq (AH)	199+48					
Sta. Eq (BK)	202+89					
	202+89	193+66		923		
Sta. Eq (AH)	193+66					
Sta. Eq (BK)	115+24					
	115+24	80+00		3524		
	80+00	33+03	4697			
Sta Reverses	33+03					
Sta Reverses	+44					
	+44	17+92	1748			
	17+92	22+92			500	
			17096	12981	4667	3693
Note: Add extra 2x quantity for edge lines			x2.25	x4	x3.25	x3.25
			38466	51924	15168	12002

Total = 117,560

-2960

Final = 114,600

Note: No EOP markings between 492+61 to 477+81 (deduct 2960')

White = 73,914

Yellow = 40,686

Center Line Rumble Strips

Location	Sta	to	Sta	8" Length (ft)	20" Length (ft)
	492+61		477+81		1480
Buckhorn/Estill Omission	477+81		466+90		
	466+90		433+55		3335
	433+55		364+88	6867	
Sta Eq (Ah)	364+88				
Sta Eq (Bk)	364+95				
	364+95	363+31		164	
	363+31	328+82			3449
Andrew Rd Omission	328+82		315+30		
	315+30		310+30		500
	310+30		296+49	1381	
	296+49		280+20		1629
	280+20		265+96	1424	
	265+96		241+19		2477
	241+19		233+04	815	
	233+04		199+48		3356
Sta Eq (Ah)	199+48				
Sta Eq (Bk)	202+89				
	202+89		193+66		923
Sta Eq (Ah)	193+66				
Sta Eq (Bk)	115+24				
	115+24		108+18		706
Cantrall Omission	108+18		77+92		
	77+92		33+03	4489	
Sta Reverses	33+03				
Sta Reverses	+44				
	+44		17+92	1748	
	17+92		22+92		500
				1	18355

* D6 RUMBLESTRIP, MRKING 2010

Thermoplastic and Preformed Plastic Pavement Marking

Sta	to	Sta	Thermoplastic				Preformed			
			5"	5"	6"	8"	12"	12"	Letter &	24"
			White (ft)	Yellow (ft)	White (ft)	White (ft)	White (ft)	Yellow (ft)	Symbols (sq ft)	White (ft)
<u>IL 29</u>										
328+82		315+30	2414	4494	224			230	62.4	83
<u>Andrew Rd</u>										
100' East		100' West	427	194		138	60			45
			2841	4688	224	138	60	230	62.4	128

Pavement Marking Removal

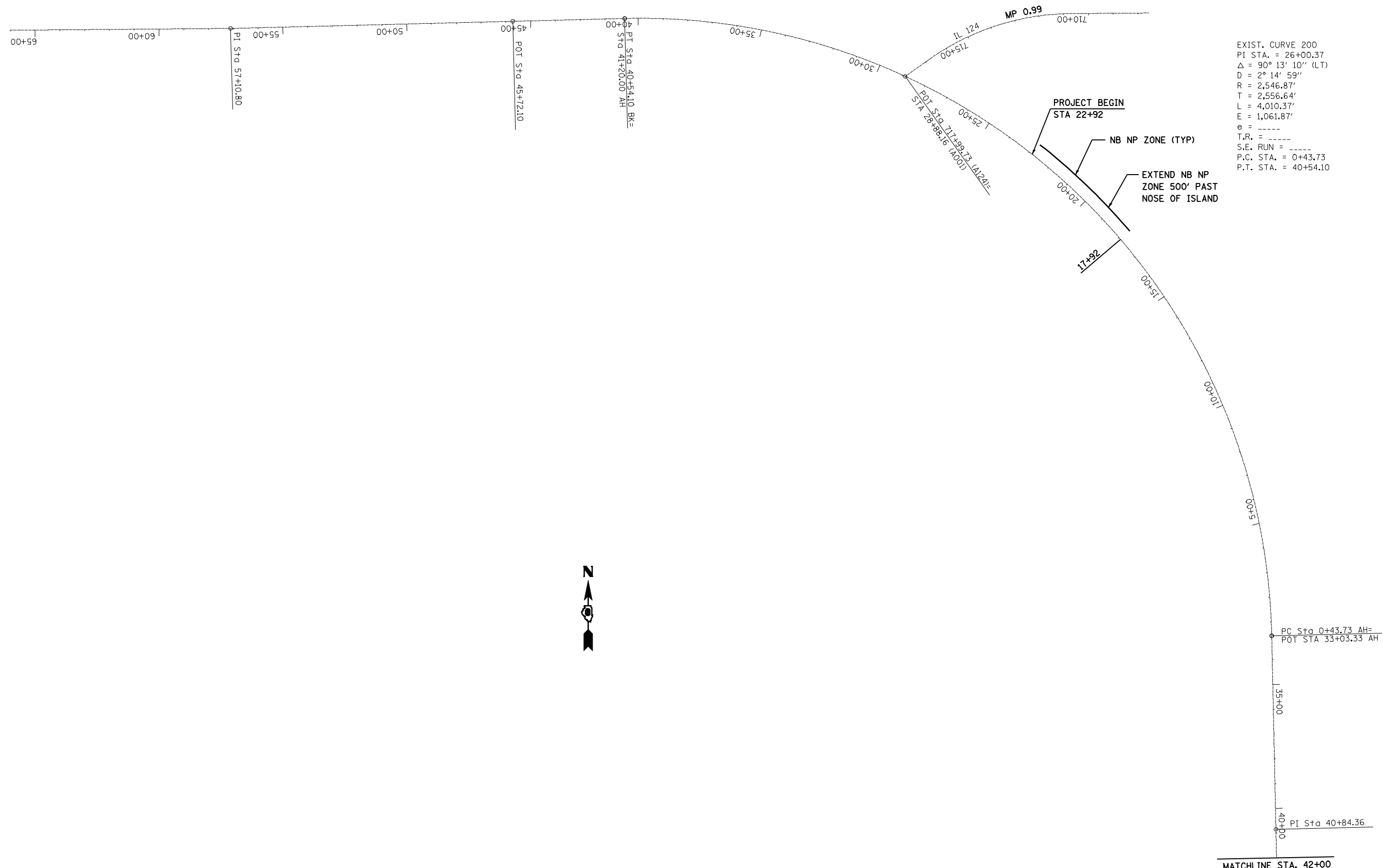
Location	(sq ft)	(sq ft)	(sq ft)	(sq ft)	(sq ft)	(sq ft)	(sq ft)	(sq ft)
IL 29 and Andrew Rd	2841	4688	224	138	60	230		128
	x5/12	x5/12	x6/12	x8/12	x12/12	x12/12		x2
	1184	1953	112	92	60	230	62.4	256

Total = 3950 sq ft

Remove Sign Panel Assy A, Relocate Sign Panel Assy A

Location	Quantity	Location	Quantity
Remove	(EA)	Relocate	(EA)
108+18 - SBL	1		
203+87 - NBL	1		
207+33 - SBL	1		
295+00 - NBL	1	296+49 - NBL	1
336+19 - SBL	1		
	5 total		1 total

* D6 RUMBLESTRIP, MRKING 2010



EXIST. CURVE 200
 PI STA. = 26+00.37
 $\Delta = 90^\circ 13' 10''$ (LT)
 $D = 2^\circ 14' 59''$
 $R = 2,546.87'$
 $T = 2,556.64'$
 $L = 4,010.37'$
 $E = 1,061.87'$
 $e = \text{-----}$
 $T.R. = \text{-----}$
 $S.E. \text{ RUN} = \text{-----}$
 $P.C. \text{ STA.} = 0+43.73$
 $P.T. \text{ STA.} = 40+54.10$



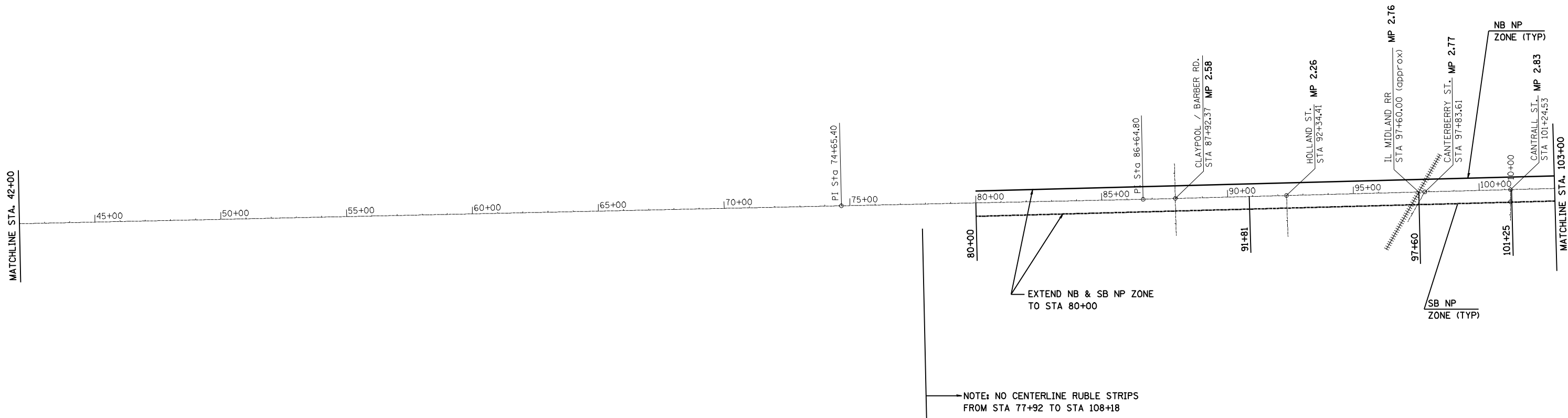
• D6 RUMBLESTRIP, MRKING 2010

FILE NAME =	USER NAME = laughlinr1	DESIGNED -	REVISED -
e:\pwork\PWIDOT\LAUGHLINRL\0157369\0672019-sht-linediagram.dgn		DRAWN -	REVISED -
	PLOT SCALE = 400.0000' / IN.	CHECKED -	REVISED -
	PLOT DATE = Aug-28-2009 02:47:33PM	DATE -	REVISED -

**STATE OF ILLINOIS
 DEPARTMENT OF TRANSPORTATION**

LINE DIAGRAM			
SCALE:	SHEET NO.	OF SHEETS	STA. TO STA.

F.A.P. RTE.	SECTION	COUNTY	TOTAL SHEETS	SHEET NO.
658	*	SANGAMON	16	6
CONTRACT NO. 72019				
ILLINOIS FED. AID PROJECT				



• D6 RUMBLESTRIP, MRKING 2010

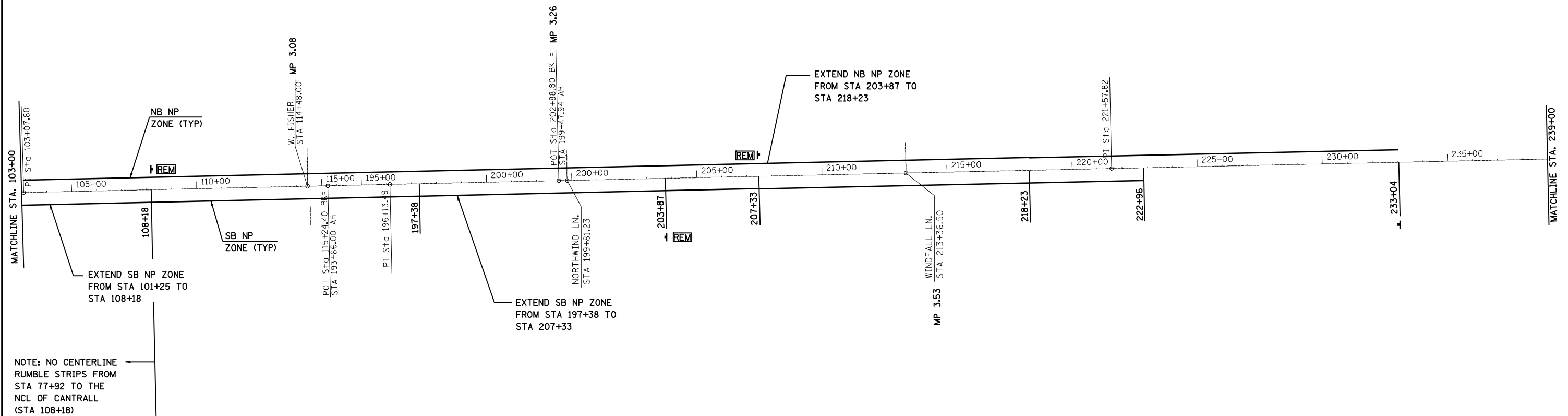
FILE NAME =	USER NAME = laughlinr1	DESIGNED -	REVISED -
e:\pwork\pwidot\LAUGHLINRL\0157369\0672019-ast-linediagram.dgn		DRAWN -	REVISED -
PLOT SCALE = 400.0000' / IN.		CHECKED -	REVISED -
PLOT DATE = Aug-28-2009 02:47:35PM		DATE -	REVISED -

**STATE OF ILLINOIS
DEPARTMENT OF TRANSPORTATION**

LINE DIAGRAM

SCALE: SHEET NO. OF SHEETS STA. TO STA.

F.A.P. RTE.	SECTION	COUNTY	TOTAL SHEETS	SHEET NO.
658	*	SANGAMON	16	7
CONTRACT NO. 72D19				
ILLINOIS FED. AID PROJECT				



NOTE: NO CENTERLINE RUMBLE STRIPS FROM STA 77+92 TO THE NCL OF CANTRALL (STA 108+18)

• D6 RUMBLESTRIP, MRKING 2010

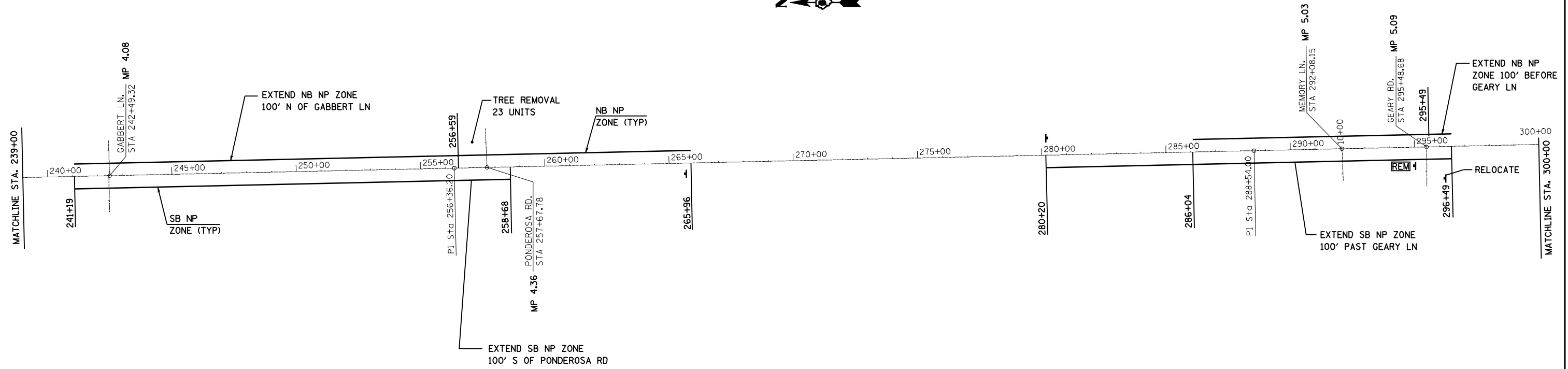
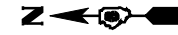
FILE NAME =	USER NAME = laughlinr1	DESIGNED -	REVISED -
e:\pwork\pwidot\LAUGHLINRL\0157369\0672019-ah-t-linediagram.dgn		DRAWN -	REVISED -
	PLOT SCALE = 400.0000' / IN.	CHECKED -	REVISED -
	PLOT DATE = Aug-28-2009 02:47:37PM	DATE -	REVISED -

**STATE OF ILLINOIS
DEPARTMENT OF TRANSPORTATION**

LINE DIAGRAM

SCALE: SHEET NO. OF SHEETS STA. TO STA.

F.A.P. RTE.	SECTION	COUNTY	TOTAL SHEETS	SHEET NO.
658	*	SANGAMON	16	8
CONTRACT NO. 72D19				
ILLINOIS FED. AID PROJECT				



• D6 RUMBLESTRIP, MRKING 2010

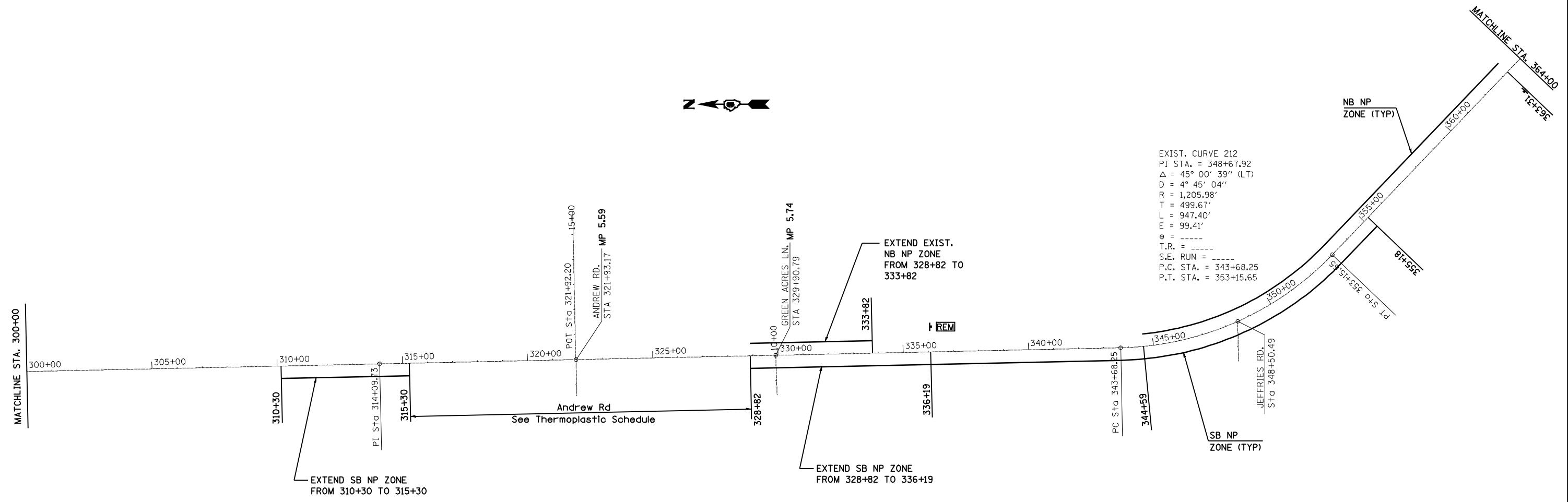
FILE NAME =	USER NAME = laughlinr1	DESIGNED -	REVISED -
e:\pwork\pwidot\LAUGHLINRL\0157369\0672019-ast-linediagram.dgn		DRAWN -	REVISED -
	PLOT SCALE = 400.0000' / IN.	CHECKED -	REVISED -
	PLOT DATE = Aug-28-2009 02:47:39PM	DATE -	REVISED -

**STATE OF ILLINOIS
DEPARTMENT OF TRANSPORTATION**

LINE DIAGRAM

SCALE: SHEET NO. OF SHEETS STA. TO STA.

F.A.P. RTE.	SECTION	COUNTY	TOTAL SHEETS	SHEET NO.
658	•	SANGAMON	16	9
CONTRACT NO. 72D19				
ILLINOIS FED. AID PROJECT				



FILE NAME =	USER NAME = laughlinr1	DESIGNED -	REVISED -
es:\pwork\PWIDOT\LAUGHLINRL\0157369\0672019-sht-linediagram.dgn		DRAWN -	REVISED -
PLOT SCALE = 400.0000' / IN.		CHECKED -	REVISED -
PLOT DATE = Aug-28-2009 02:47:41PM		DATE -	REVISED -

**STATE OF ILLINOIS
 DEPARTMENT OF TRANSPORTATION**

LINE DIAGRAM

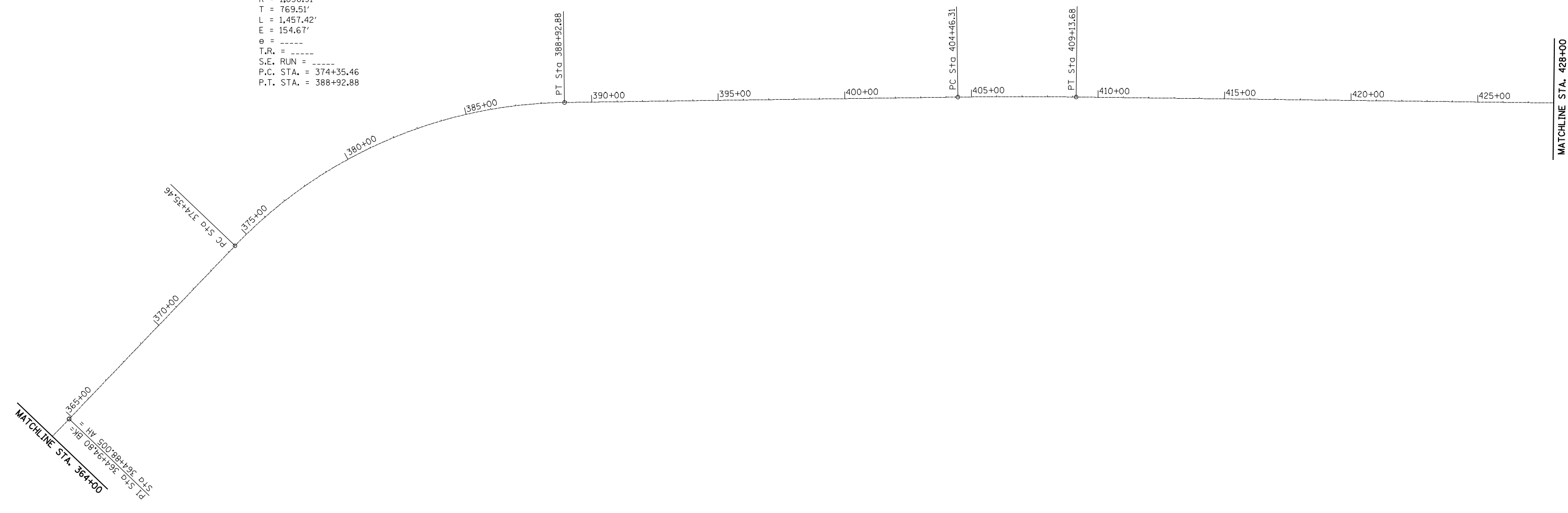
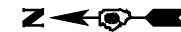
SCALE:	SHEET NO.	OF	SHEETS	STA.	TO	STA.
--------	-----------	----	--------	------	----	------

F.A.P. RTE.	SECTION	COUNTY	TOTAL SHEETS	SHEET NO.
658	*	SANGAMON	16	10
CONTRACT NO. 72D19				
ILLINOIS FED. AID PROJECT				

• D6 RUMBLESTRIP, MRKING 2010

EXIST. CURVE TA201
 PI STA. = 382+04.97
 Δ = 45° 27' 33" (RT)
 D = 3° 07' 09"
 R = 1,836.91'
 T = 769.51'
 L = 1,457.42'
 E = 154.67'
 e = -----
 T.R. = -----
 S.E. RUN = -----
 P.C. STA. = 374+35.46
 P.T. STA. = 388+92.88

EXIST. CURVE TA202
 PI STA. = 406+80.01
 Δ = 1° 29' 36" (RT)
 D = 0° 19' 10"
 R = 17,930.50'
 T = 233.70'
 L = 467.37'
 E = 1.52'
 e = -----
 T.R. = -----
 S.E. RUN = -----
 P.C. STA. = 404+46.31
 P.T. STA. = 409+13.68



• D6 RUMBLESTRIP, MRKING 2010

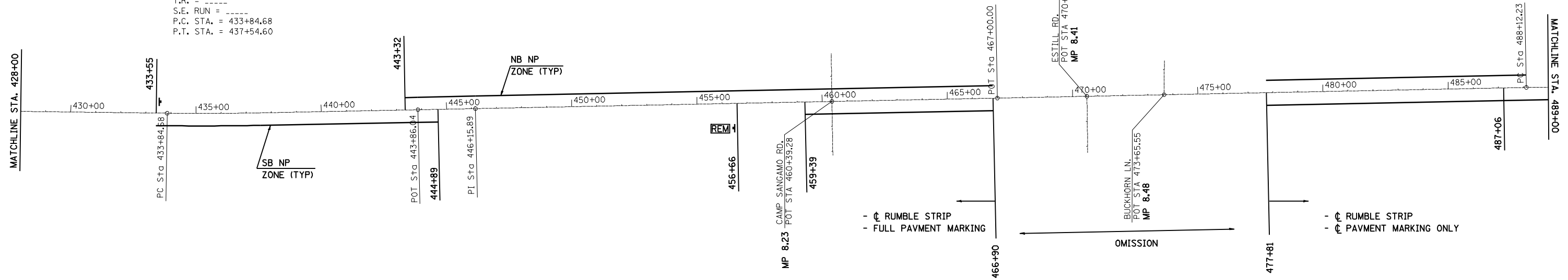
FILE NAME = e:\pwork\PWIDOT\LAUGHLINRL\0157369\0672019-sht-1\linediagram.dgn	USER NAME = laughlinr1	DESIGNED -	REVISED -
	PLOT SCALE = 400.0000' / IN.	DRAWN -	REVISED -
	PLOT DATE = Aug-28-2009 02:47:43PM	CHECKED -	REVISED -
		DATE -	REVISED -

**STATE OF ILLINOIS
 DEPARTMENT OF TRANSPORTATION**

LINE DIAGRAM			
SCALE:	SHEET NO.	OF SHEETS	STA. TO STA.

F.A.P. RTE.	SECTION	COUNTY	TOTAL SHEETS	SHEET NO.
658	*	SANGAMON	16	11
CONTRACT NO. 72D19				
ILLINOIS FED. AID PROJECT				

EXIST. CURVE TA203
 PI STA. = 435+69.65
 $\Delta = 1^\circ 50' 07''$ (LT)
 $D = 0^\circ 29' 46''$
 $R = 11,548.22'$
 $T = 184.97'$
 $L = 369.91'$
 $E = 1.48'$
 $e = \text{-----}$
 $T.R. = \text{-----}$
 $S.E. \text{ RUN} = \text{-----}$
 P.C. STA. = 433+84.68
 P.T. STA. = 437+54.60



• D6 RUMBLESTRIP, MRKING 2010

FILE NAME =	USER NAME = laughlinr1	DESIGNED -	REVISED -
e:\pwork\pwidot\LAUGHLINRL\0157369\0672019-ast-linediagram.dgn		DRAWN -	REVISED -
	PLOT SCALE = 400.0000' / IN.	CHECKED -	REVISED -
	PLOT DATE = Aug-28-2009 02:47:45PM	DATE -	REVISED -

**STATE OF ILLINOIS
 DEPARTMENT OF TRANSPORTATION**

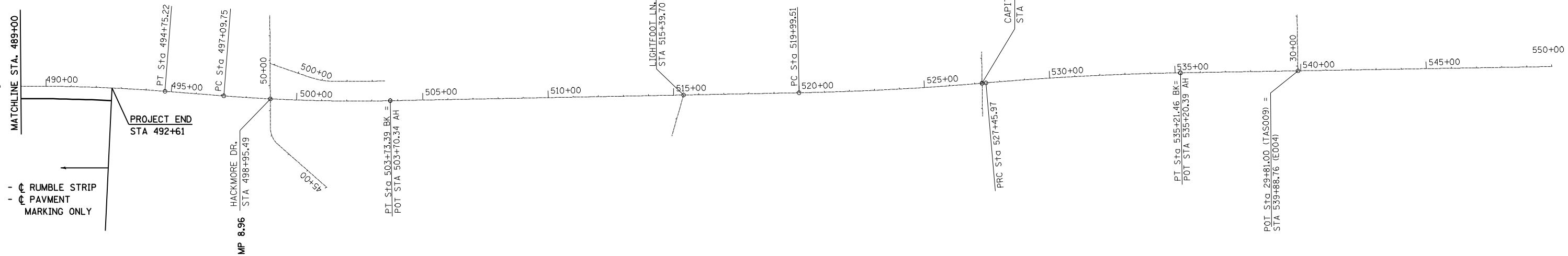
LINE DIAGRAM

SCALE: SHEET NO. OF SHEETS STA. TO STA.

F.A.P. RTE.	SECTION	COUNTY	TOTAL SHEETS	SHEET NO.
658	•	SANGAMON	16	12
CONTRACT NO. 72D19				
ILLINOIS FED. AID PROJECT				

EXIST. CURVE 206
 PI STA. = 491+43.99
 Δ = 5° 36' 41" (RT)
 D = 0° 50' 47"
 R = 6,769.50'
 T = 331.76'
 L = 663.00'
 E = 8.12'
 e = -----
 T.R. = -----
 S.E. RUN = -----
 P.C. STA. = 488+12.23
 P.T. STA. = 494+75.22

EXIST. CURVE 209
 PI STA. = 531+33.87
 Δ = 3° 59' 12" (RT)
 D = 0° 30' 51"
 R = 11,145.20'
 T = 387.90'
 L = 775.49'
 E = 6.75'
 e = -----
 T.R. = -----
 S.E. RUN = -----
 P.C. STA. = 527+45.97
 P.T. STA. = 535+21.46



- C RUMBLE STRIP
 - C PAVMENT
 MARKING ONLY

• D6 RUMBLESTRIP, MRKING 2010

FILE NAME =	USER NAME = laughlinr1	DESIGNED -	REVISED -	STATE OF ILLINOIS DEPARTMENT OF TRANSPORTATION	LINE DIAGRAM				F.A.P. RTE.	SECTION	COUNTY	TOTAL SHEETS	SHEET NO.
e:\pwork\pwidot\LAUGHLINRL\0157369\0672019-sht-linediagram.dgn		DRAWN -	REVISED -		658	•	SANGAMON	16	13				
PLOT SCALE = 400.0000' / IN.		CHECKED -	REVISED -		CONTRACT NO. 72D19								
PLOT DATE = Aug-28-2009 02:47:48PM		DATE -	REVISED -		SCALE:	SHEET NO.	OF SHEETS	STA.	TO STA.	ILLINOIS FED. AID PROJECT			

307+47.95

313+47.95

310+00

THERMOPLASTIC	
(A)	EX & PR PAVEMENT MARKING - LINE - 5" WHITE (SOLID)
(B)	EX & PR PAVEMENT MARKING - LINE - 5" DOUBLE YELLOW (SOLID)
(C)	EX & PR PAVEMENT MARKING - LINE - 6" WHITE (SOLID)
(D)	EX & PR PAVEMENT MARKING - LINE - 8" WHITE (SOLID)
(E)	EX & PR PAVEMENT MARKING - LINE - 12" WHITE (SOLID)
PREFORMED PLASTIC	
(F)	EX PAVEMENT MARKING TY B INLAID - LETTERS & SYMBOLS - WHITE (SOLID) (PR THERMOPLASTIC)
(G)	EX PAVEMENT MARKING TY B INLAID - LINE - 24" WHITE (SOLID) (PR THERMOPLASTIC)



BEGIN THERMOPLASTIC PAVEMENT MARKING

313+47.95

319+47.95

315+00

(A)

(B)

FILE NAME =	USER NAME = laughlinr1	DESIGNED -	REVISED -
er:\pwork\PWIDOT\LAUGHLINRL\0157369\0672019-sht-IntPaveMark.dgn		DRAWN -	REVISED -
	PLOT SCALE = 40.0000' / IN.	CHECKED -	REVISED -
	PLOT DATE = Aug-28-2009 02:47:50PM	DATE -	REVISED -

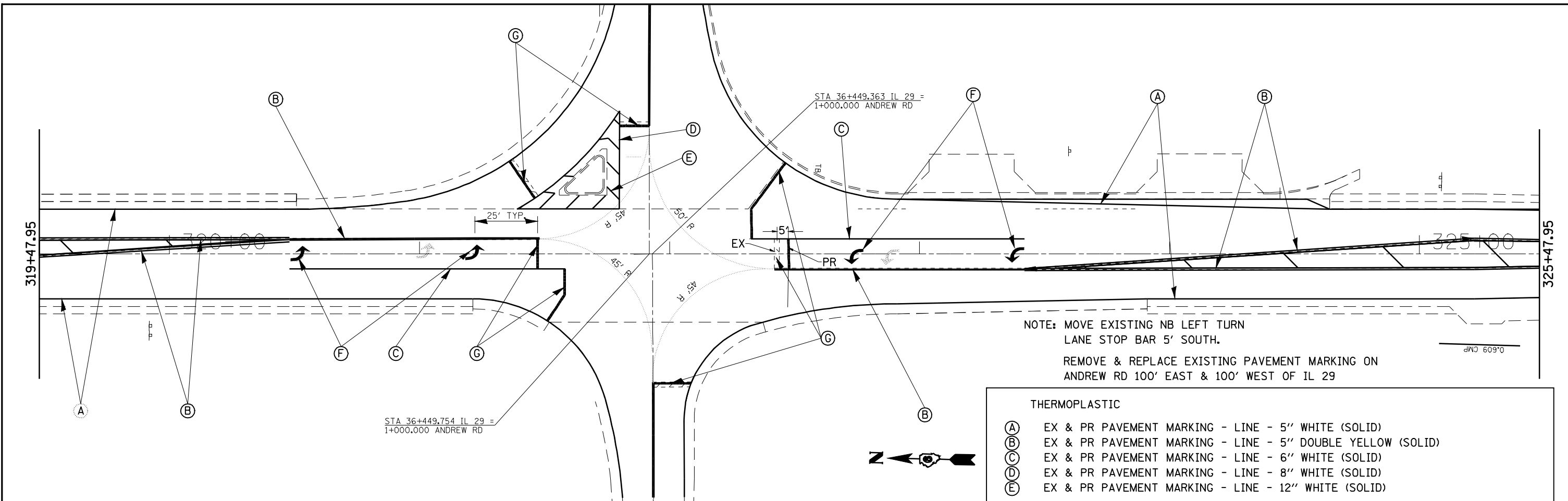
STATE OF ILLINOIS
DEPARTMENT OF TRANSPORTATION

PAVEMENT MARKING PLAN

SCALE: SHEET NO. OF SHEETS STA. TO STA.

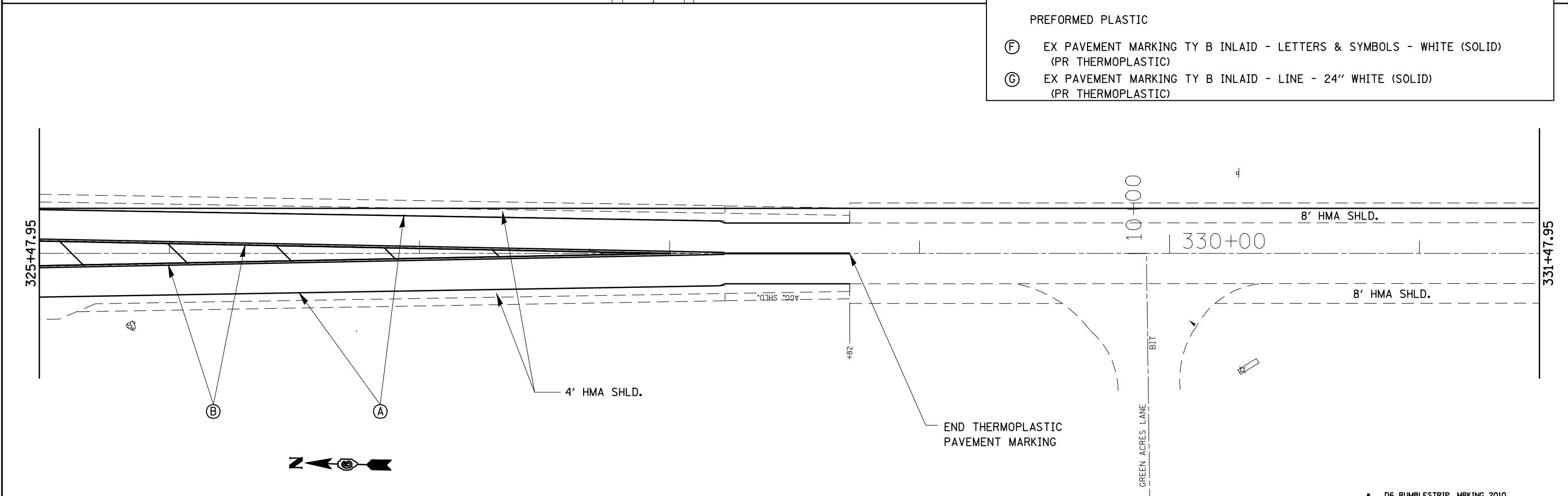
F.A.P. RTE.	SECTION	COUNTY	TOTAL SHEETS	SHEET NO.
658	*	SANGAMON	16	14
CONTRACT NO. 72D19				
ILLINOIS FED. AID PROJECT				

* D6 RUMBLESTRIP, MRKING 2010

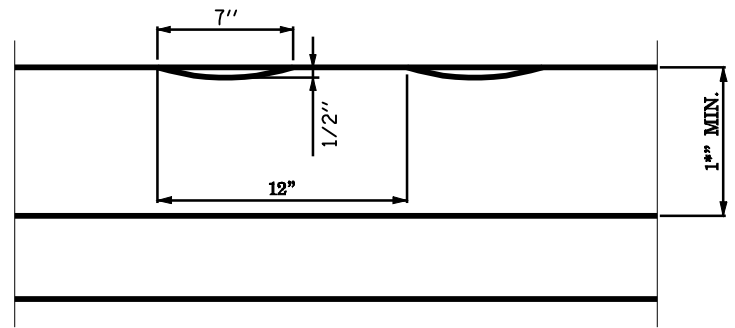
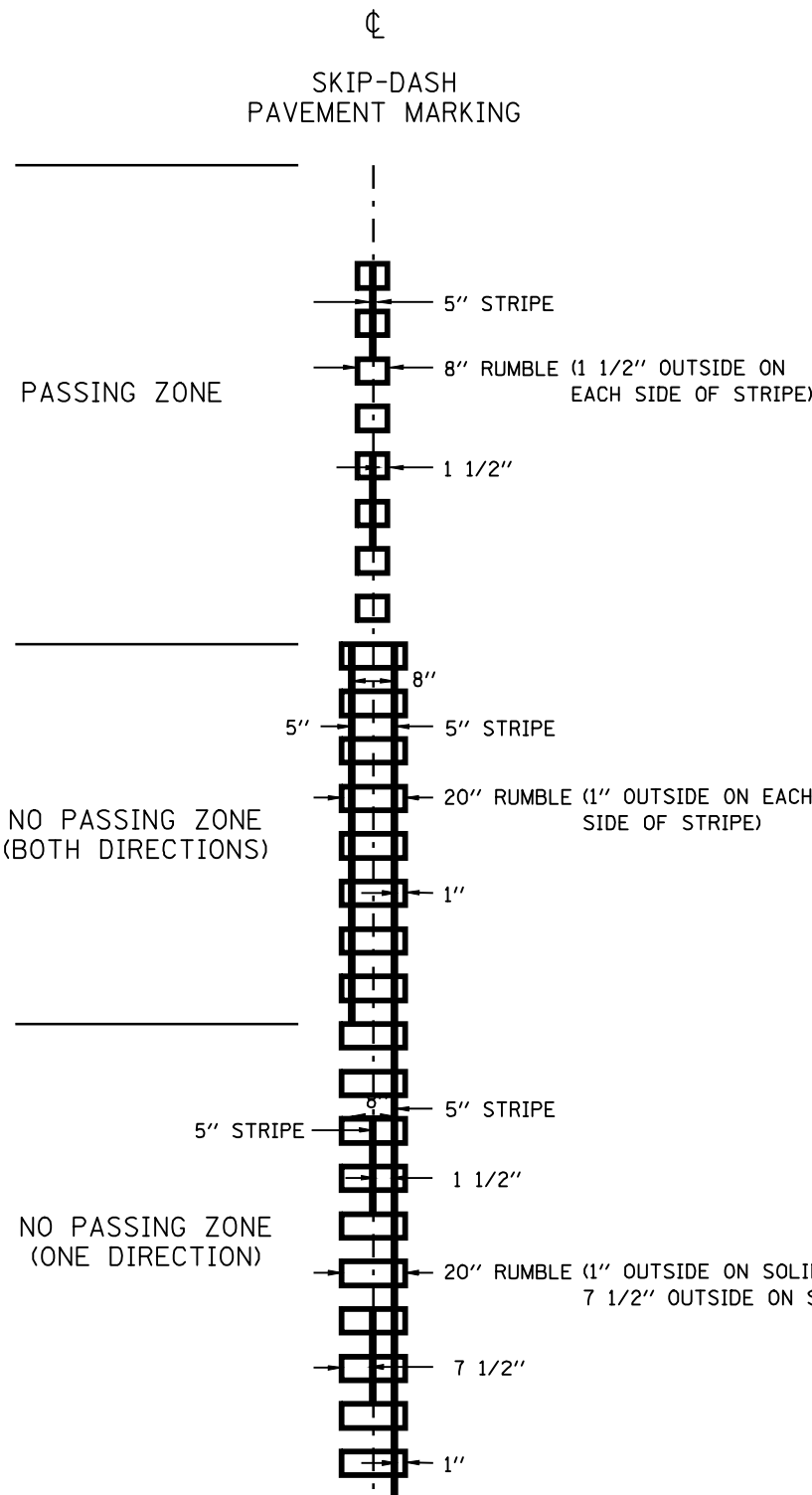


NOTE: MOVE EXISTING NB LEFT TURN LANE STOP BAR 5' SOUTH.
 REMOVE & REPLACE EXISTING PAVEMENT MARKING ON ANDREW RD 100' EAST & 100' WEST OF IL 29

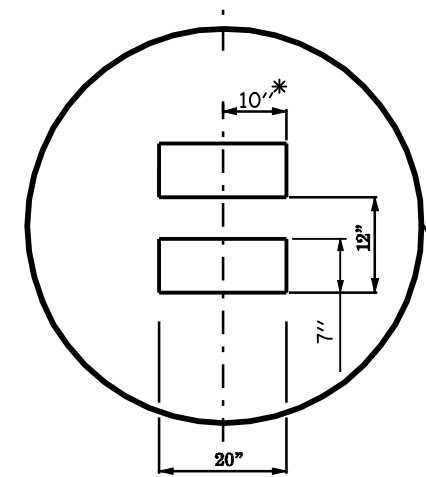
- THERMOPLASTIC**
- (A) EX & PR PAVEMENT MARKING - LINE - 5" WHITE (SOLID)
 - (B) EX & PR PAVEMENT MARKING - LINE - 5" DOUBLE YELLOW (SOLID)
 - (C) EX & PR PAVEMENT MARKING - LINE - 6" WHITE (SOLID)
 - (D) EX & PR PAVEMENT MARKING - LINE - 8" WHITE (SOLID)
 - (E) EX & PR PAVEMENT MARKING - LINE - 12" WHITE (SOLID)
- PREFORMED PLASTIC**
- (F) EX PAVEMENT MARKING TY B INLAID - LETTERS & SYMBOLS - WHITE (SOLID) (PR THERMOPLASTIC)
 - (G) EX PAVEMENT MARKING TY B INLAID - LINE - 24" WHITE (SOLID) (PR THERMOPLASTIC)



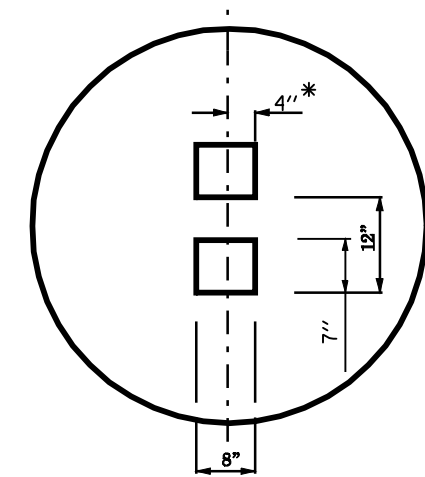
FILE NAME =	USER NAME = laughlinr1	DESIGNED -	REVISED -	STATE OF ILLINOIS DEPARTMENT OF TRANSPORTATION	PAVEMENT MARKING PLAN				F.A.P. RTE.	SECTION	COUNTY	TOTAL SHEETS	SHEET NO.
er:\pwork\PWIDOT\LAUGHLINRL\0157369\0672019-sht-IntPaveMark.dgn		DRAWN -	REVISED -		658	.	SANGAMON	16	15				
PLOT SCALE = 40.0000' / IN.		CHECKED -	REVISED -		CONTRACT NO. 72019				ILLINOIS FED. AID PROJECT				
PLOT DATE = Aug-28-2009 02:47:53PM		DATE -	REVISED -		SCALE:	SHEET NO.	OF SHEETS	STA.	TO STA.				



SECTION C-C

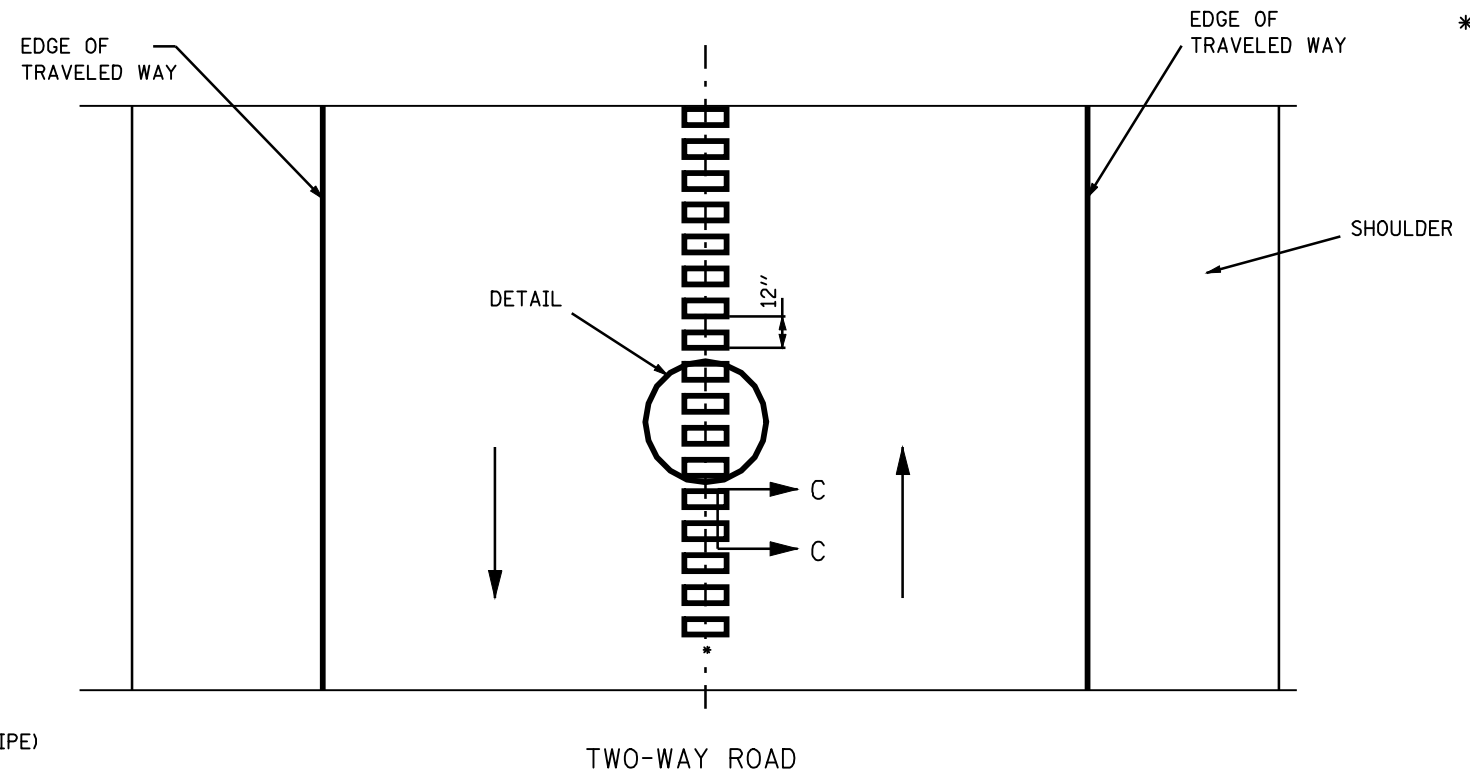


DETAIL
12" WIDE
NP ZONES



DETAIL
8" WIDE
PASS ZONES

* = LATERAL DEVIATION SHALL NOT EXCEED ONE INCH IN 100 FEET.



TWO-WAY ROAD

GENERAL NOTES:
 SKIP OVER EXISTING (4' GAP, 2' ON EACH SIDE) RAISED REFLECTIVE PAVEMENT MARKERS
 RUMBLE STRIPS SHALL NOT BE PLACED ON BRIDGES.
 ALL RUMBLE STRIPS SHALL BE MILLED.
 CENTERLINE RUMBLE STRIPS SHALL NOT BE CONTINUOUS THROUGH CONNECTIONS OF SIDEROADS WITH NO LEFT TURN LANES.
 DISCONTINUE CENTERLINE RUMBLE STRIPS THROUGH THE LIMITS OF ALL LEFT TURN LANES, INCLUDING ANY LANE TAPER SECTIONS.

FILE NAME =	USER NAME = laughlinr1	DESIGNED -	REVISED -
er:\pwork\pwidot\LAUGHLINRL\0157369\0672019-ahh-detail.dgn		DRAWN -	REVISED -
PLOT SCALE = 200.0000' / IN.		CHECKED -	REVISED -
PLOT DATE = Aug-28-2009 02:47:55PM		DATE -	REVISED -

**STATE OF ILLINOIS
DEPARTMENT OF TRANSPORTATION**

RUMBLE STRIPS CENTERLINE DETAIL			
SCALE:	SHEET NO.	OF SHEETS	STA. TO STA.

F.A.P. RTE.	SECTION	COUNTY	TOTAL SHEETS	SHEET NO.
658	.	**	16	16
CONTRACT NO. 72D19				
ILLINOIS FED. AID PROJECT				