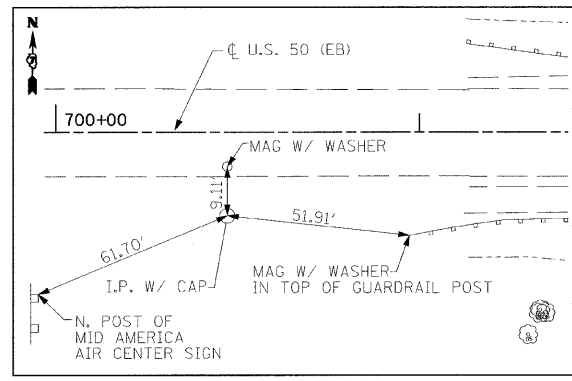
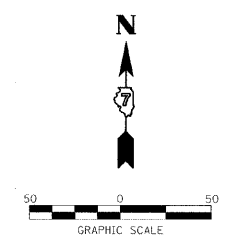
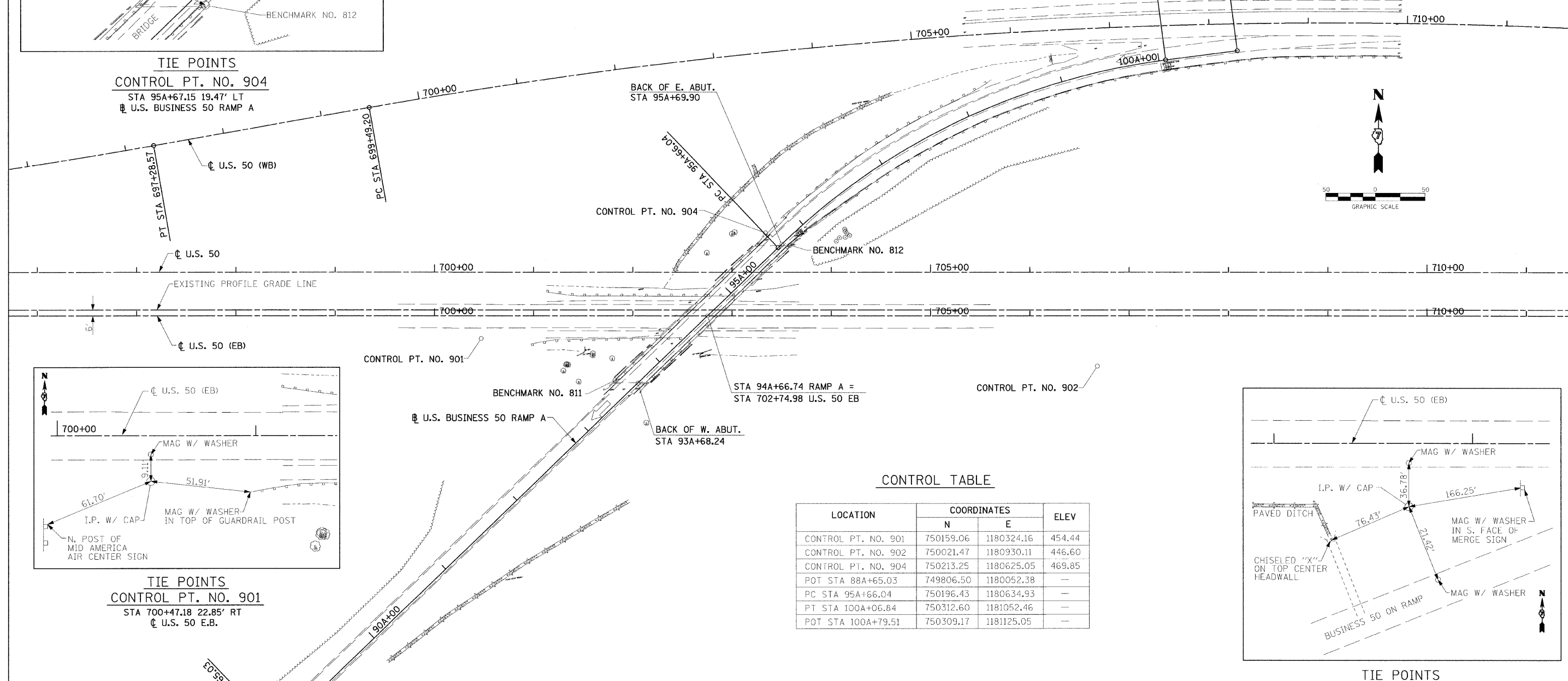


TIE POINTS
CONTROL PT. NO. 904
 STA 95A+67.15 19.47' LT
 U.S. BUSINESS 50 RAMP A

SEE BRIDGE PLANS GENERAL DATA SHEET FOR SE TRANSITION DETAILS

CURVE DATA

Δ = 36°-29'-50" (RT)
 D = 8°-16'-47"
 T = 228.17'
 L = 440.80'
 E = 36.65'
 R = 692.00'
 SE = 0.080'/FT.
 PC STA = 95A+66.04
 PT STA = 100A+06.84
 PI STA = 97A+94.21
 SE TRANS. = 435'
 SE ATTAINED STA 92A+65.00 TO STA 97A+00.00
 NC = 3/16 "/FT.



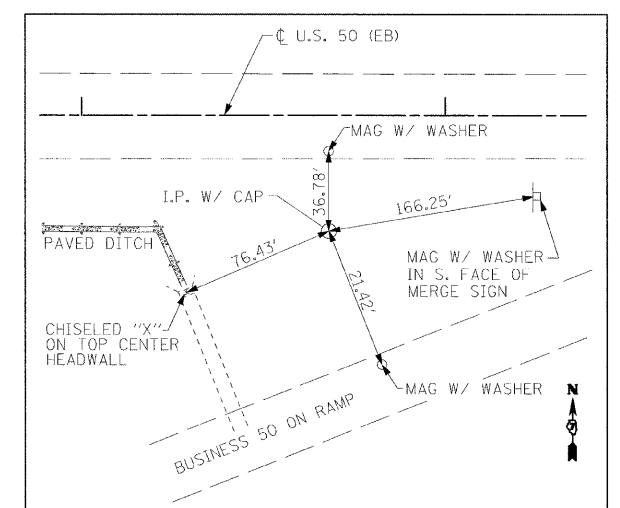
TIE POINTS
CONTROL PT. NO. 901
 STA 700+47.18 22.85' RT
 U.S. 50 E.B.

CONTROL TABLE

LOCATION	COORDINATES		ELEV
	N	E	
CONTROL PT. NO. 901	750159.06	1180324.16	454.44
CONTROL PT. NO. 902	750021.47	1180930.11	446.60
CONTROL PT. NO. 904	750213.25	1180625.05	469.85
POT STA 88A+65.03	749806.50	1180052.38	—
PC STA 95A+66.04	750196.43	1180634.93	—
PT STA 100A+06.84	750312.60	1181052.46	—
POT STA 100A+79.51	750309.17	1181125.05	—

BENCHMARK INFO

LOCATION	DESCRIPTION	ELEV
BENCHMARK NO. 811	CHISELED SQUARE AT SW CORNER OF U.S. 50 BUSINESS RAMP A BRIDGE OVER U.S. 50 EB - 17.4' LT STA 93A+53.35	474.31
BENCHMARK NO. 812	CHISELED SQUARE AT NE CORNER OF U.S. 50 BUSINESS RAMP A BRIDGE OVER U.S. 50 EB - 7.4' RT STA 95A+74.76	469.50



TIE POINTS
CONTROL PT. NO. 902
 STA 706+67.92 50.94' RT
 U.S. 50 E.B.

FILE NAME = #FILE#	USER NAME = #USER#	DESIGNED - SMK	REVISED -	STATE OF ILLINOIS DEPARTMENT OF TRANSPORTATION	ALIGNMENT, TIES AND BENCHMARKS		F.A.S. RTE. 1807	SECTION (51-23HB)-6B-1	COUNTY LAWRENCE	TOTAL SHEETS 60	SHEET NO. 10			
	PLOT SCALE = #SCALE#	DRAWN - SRS	REVISED -				SCALE: 1"=50'	SHEET NO. 1 OF 1 SHEETS	STA TO STA	CONTRACT NO. 74115				
	PLOT DATE = #DATE#	CHECKED -	REVISED -				FED. ROAD DIST. NO. ILLINOIS FED. AID PROJECT							
		DATE -	REVISED -											