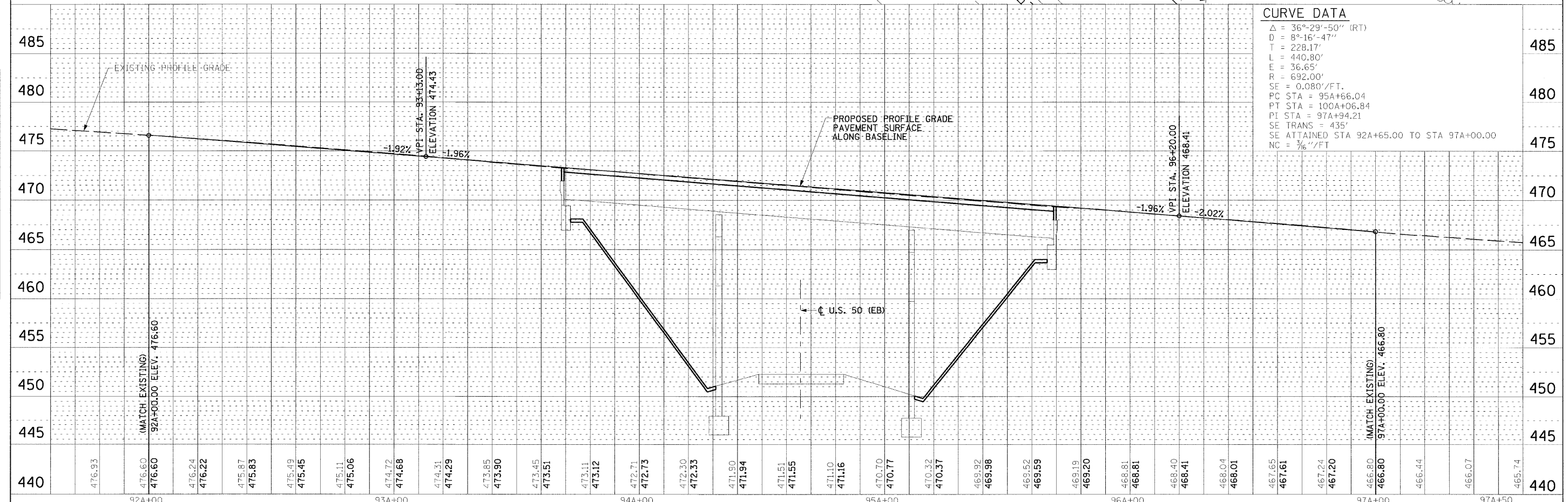
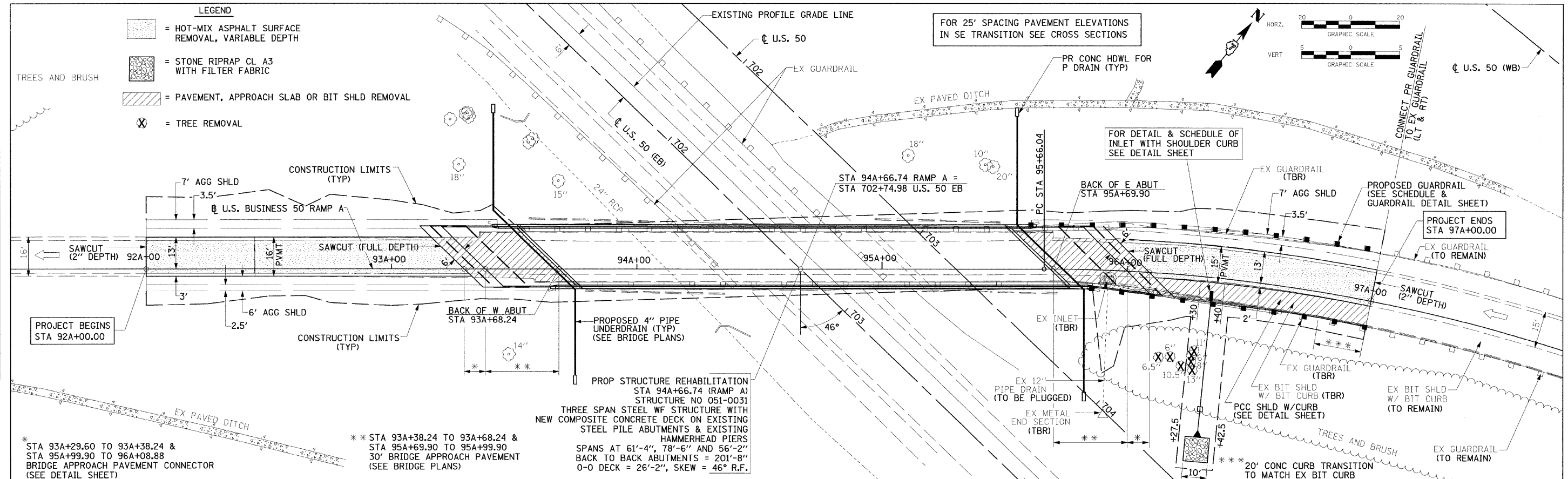


- LEGEND**
- = HOT-MIX ASPHALT SURFACE REMOVAL, VARIABLE DEPTH
 - = STONE RIPRAP CL A3 WITH FILTER FABRIC
 - = PAVEMENT, APPROACH SLAB OR BIT SHLD REMOVAL
 - = TREE REMOVAL



CURVE DATA

Δ = 36°-29'-50" (RT)
D = 8°-16'-47"
T = 228.17'
L = 440.80'
E = 36.65'
R = 692.00'
SE = 0.080'/FT.
PC STA = 95A+66.04
PT STA = 100A+06.84
PI STA = 97A+94.21
SE TRANS = 435'
SE ATTAINED STA 92A+65.00 TO STA 97A+00.00
NC = 3/6"/FT

PLAN

DATE	
BY	
REVISIONS	
PLOTTED	
ALIGNMENT CHECKED	
NOTE BOOK NO.	
PAID FILE NAME	

PROFILE

DATE	
BY	
REVISIONS	
PLOTTED	
GRADES CHECKED	
NOTE BOOK NO.	
STRUCTURE NO.	
NOTATION	

FILE NAME =	USER NAME = #USER#	DESIGNED - SMK	REVISED -	STATE OF ILLINOIS DEPARTMENT OF TRANSPORTATION	PLAN AND PROFILE U.S. BUSINESS 50 RAMP A STA 92A+00 TO STA 97A+50		F.A.S. R/L	SECTION	COUNTY	TOTAL SHEETS	SHEET NO.		
#FILE#		DRAWN - SRS	REVISED -		SCALE: 1"=20'	SHEET NO. 1	OF 1	SHEETS	STA. 92A+00	TO STA. 97A+50	LAWRENCE	60	11
		CHECKED -	REVISED -								CONTRACT NO. 74115		
		DATE -	REVISED -										