

STATE OF ILLINOIS  
DEPARTMENT OF TRANSPORTATION

NORTH CURB LINE

Location	Station	Offset	Theoretical Grade Elevations
End W. Appr. Slab	93A+20.72	-16.92	474.36
A	93A+30.72	-16.92	474.20
B	93A+40.72	-16.92	474.04
Beg. W. Appr. Slab	93A+51.15	-16.50	473.88

NORTH EDGE OF TRAFFIC LANE

Location	Station	Offset	Theoretical Grade Elevations
End W. Appr. Slab	93A+25.81	-12.00	474.28
A	93A+35.81	-12.00	474.11
B	93A+45.81	-12.00	473.94
Beg. W. Appr. Slab	93A+55.81	-12.00	473.76

RAMP B AND PROFILE GRADE LINE

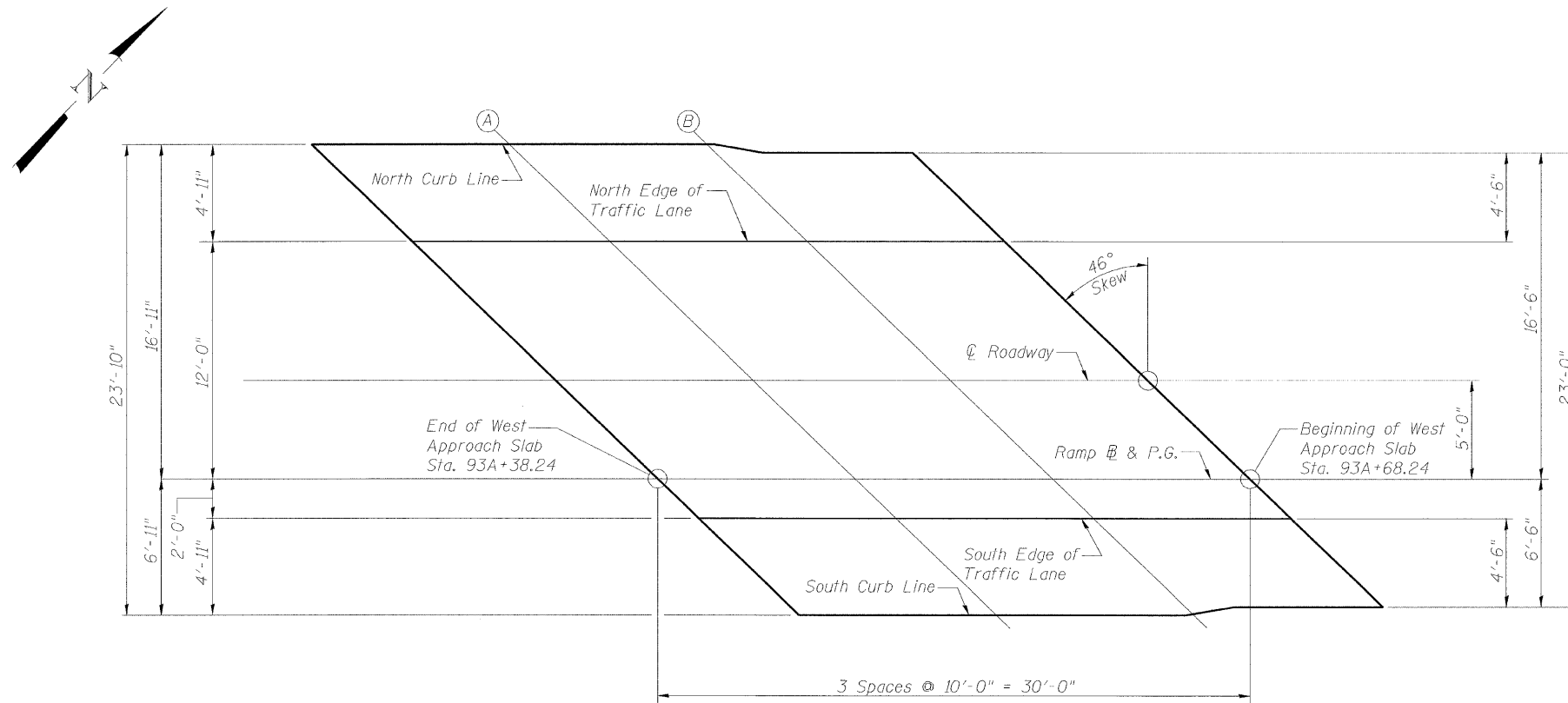
Location	Station	Offset	Theoretical Grade Elevations
End W. Appr. Slab	93A+38.24	0.00	473.94
A	93A+48.24	0.00	473.74
B	93A+58.24	0.00	473.54
Beg. W. Appr. Slab	93A+68.24	0.00	473.35

SOUTH EDGE OF TRAFFIC LANE

Location	Station	Offset	Theoretical Grade Elevations
End W. Appr. Slab	93A+40.31	2.00	473.86
A	93A+50.31	2.00	473.66
B	93A+60.31	2.00	473.46
Beg. W. Appr. Slab	93A+70.31	2.00	473.26

SOUTH CURB LINE

Location	Station	Offset	Theoretical Grade Elevations
End W. Appr. Slab	93A+45.40	6.92	473.65
A	93A+55.40	6.92	473.44
B	93A+65.33	6.85	473.24
Beg. W. Appr. Slab	93A+74.97	6.50	473.05



PLAN - WEST APPROACH

TOP OF WEST APPROACH SLAB ELEVATIONS  
FAS ROUTE 1807 SECTION (51-23HB)-6B-1  
LAWRENCE COUNTY  
STATION 94A+66.74  
STRUCTURE NO. 051-0031

DESIGNED -	MJP
CHECKED -	KWB
DRAWN -	REZ
CHECKED -	TDN

**URS**

345 E. ASH AVE., SUITE B  
DECATUR, IL, 62526  
TEL. 217-875-4800

SHEET NO. 6	F.A.S. RTE.	SECTION	COUNTY	TOTAL SHEETS	SHEET NO.
	1807	(51-23HB)-6B-1	LAWRENCE	60	22
24 SHEETS	CONTRACT NO. 74115				
FED. ROAD DIST. NO. _ ILLINOIS FED. AID PROJECT					