

STATE OF ILLINOIS
DEPARTMENT OF TRANSPORTATION

NORTH CURB LINE

Location	Station	Offset	Theoretical Grade Elevations
Beg. E. Appr. Slab	95A+52.80	-16.50	470.58
T	95A+62.33	-16.83	470.41
U	95A+71.81	-16.94	470.26
End E. Appr. Slab	95A+81.80	-17.10	470.09

NORTH EDGE OF TRAFFIC LANE

Location	Station	Offset	Theoretical Grade Elevations
Beg. E. Appr. Slab	95A+57.46	-12.00	470.27
T	95A+67.31	-12.00	470.10
U	95A+76.94	-12.00	469.94
End E. Appr. Slab	95A+87.05	-12.00	469.76

RAMP @ AND PROFILE GRADE LINE

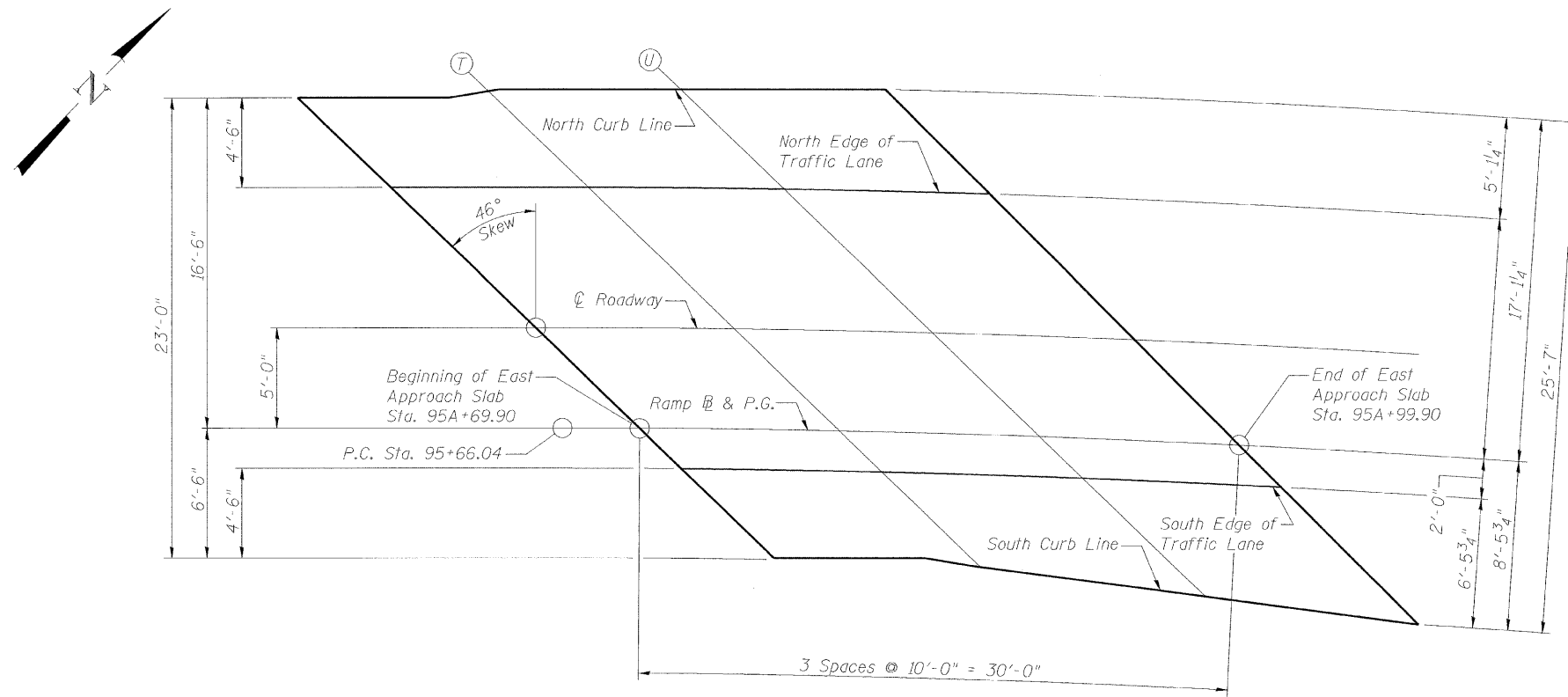
Location	Station	Offset	Theoretical Grade Elevations
Beg. E. Appr. Slab	95A+69.90	0.00	469.40
T	95A+79.90	0.00	469.20
U	95A+89.90	0.00	469.00
End E. Appr. Slab	95A+99.90	0.00	468.81

SOUTH EDGE OF TRAFFIC LANE

Location	Station	Offset	Theoretical Grade Elevations
Beg. E. Appr. Slab	95A+72.00	2.00	469.24
T	95A+82.07	2.00	469.04
U	95A+92.13	2.00	468.84
End E. Appr. Slab	96A+02.11	2.00	468.64

SOUTH CURB LINE

Location	Station	Offset	Theoretical Grade Elevations
Beg. E. Appr. Slab	95A+76.72	6.42	468.88
T	95A+87.16	6.63	468.65
U	95A+98.56	7.67	468.35
End E. Appr. Slab	96A+09.41	8.48	468.07



TOP OF EAST APPROACH SLAB ELEVATIONS
FAS ROUTE 1807 SECTION (51-23HB)-6B-1
LAWRENCE COUNTY
STATION 94A+66.74
STRUCTURE NO. 051-0031

DESIGNED -	MJP
CHECKED -	KWB
DRAWN -	REZ
CHECKED -	TDN

URS

345 E. ASH AVE., SUITE B
DECATUR, IL. 62526
TEL. 217-875-4800

SHEET NO. /	F.A.S. RTE.	SECTION	COUNTY	TOTAL SHEETS	SHEET NO.
24 SHEETS	1807	(51-23HB)-6B-1	LAWRENCE	60	23
			CONTRACT NO. 74115		
FED. ROAD DIST. NO. 1		ILLINOIS FED. AID PROJECT			