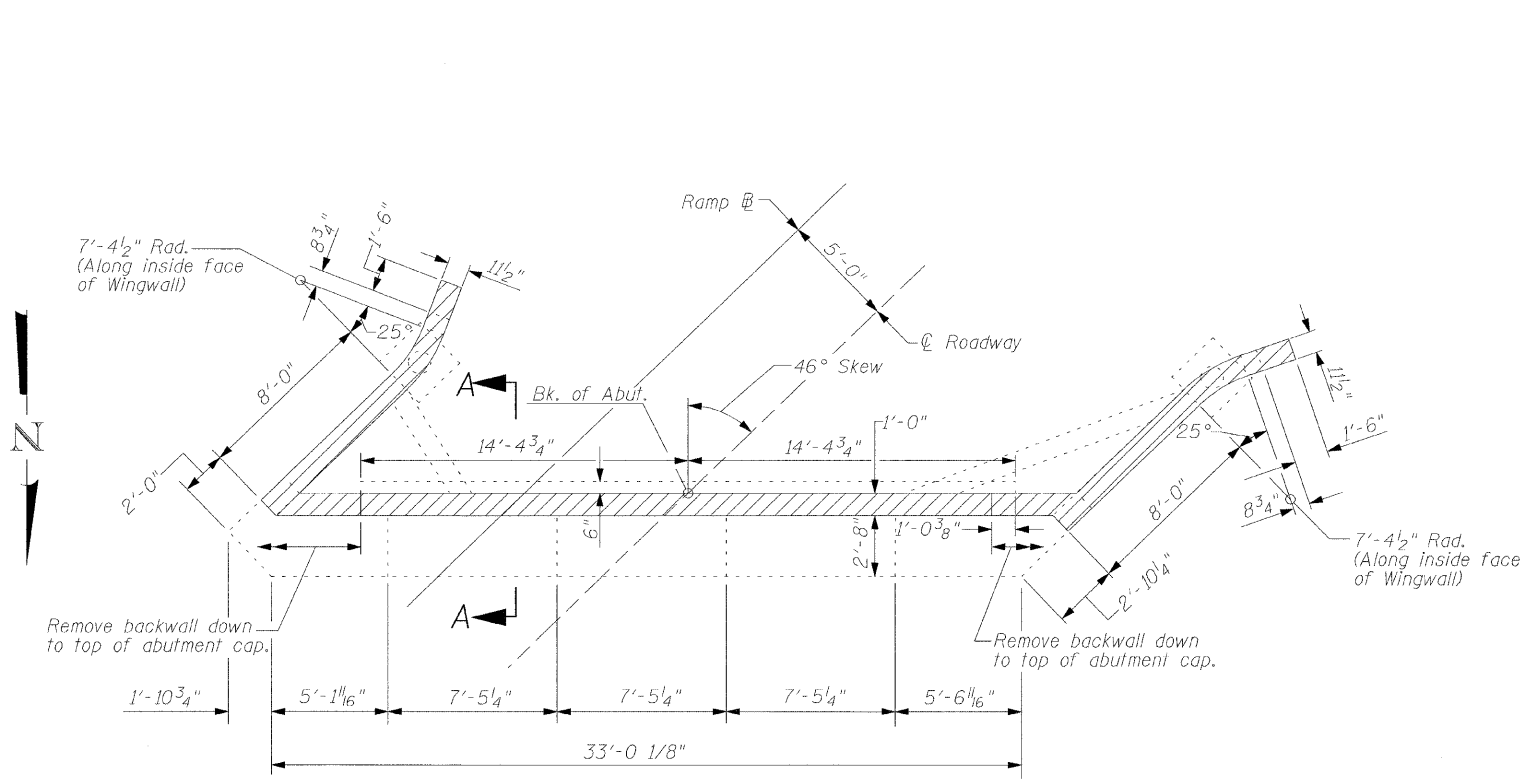
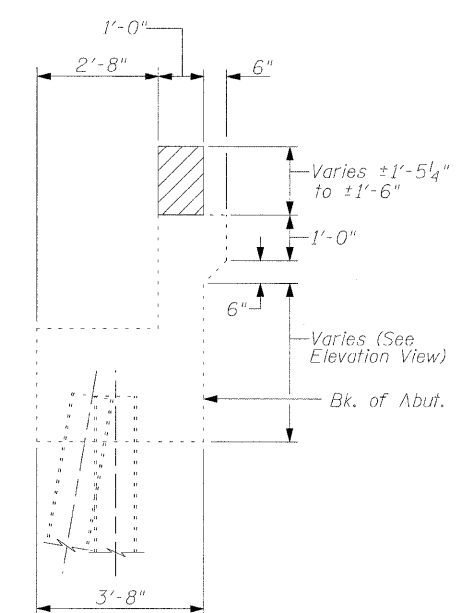


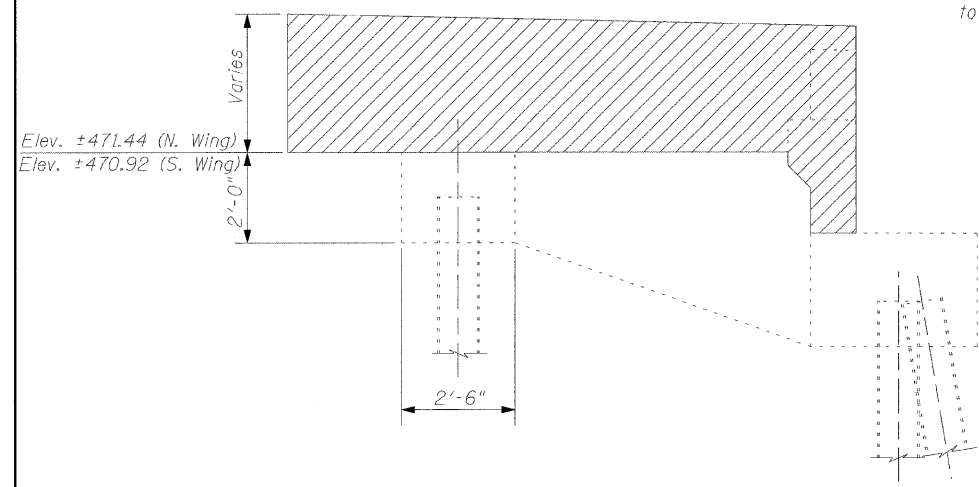
STATE OF ILLINOIS  
DEPARTMENT OF TRANSPORTATION



PLAN - WEST ABUTMENT

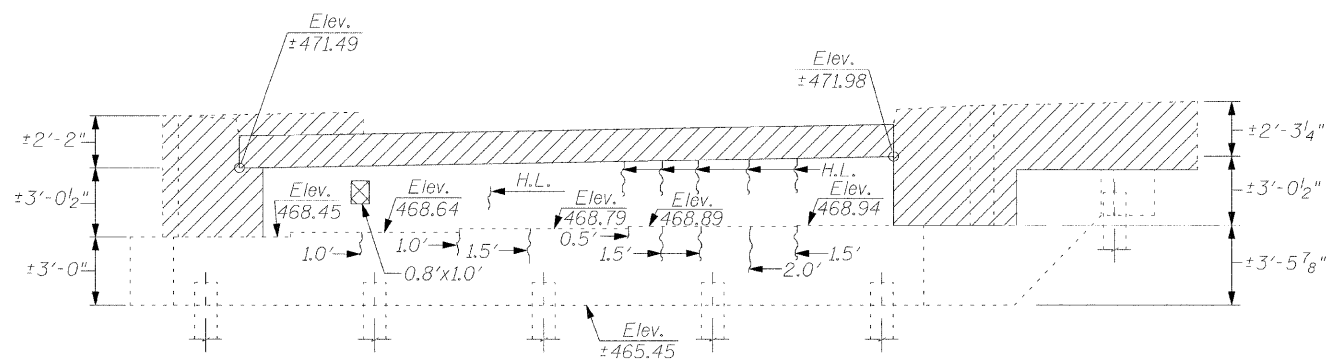


SECTION A-A



WINGWALL ELEVATION

- LEGEND**
- 2.0' Epoxy Crack Injection
  - H.L. Hairline Crack - Not To Be Sealed
  - Concrete Removal
  - Structural Repair of Concrete



ELEVATION - WEST ABUTMENT  
(Looking West)

**NOTES**

Remove upper portion of backwall between inside face of existing wingwalls to top of corbel as shown. Existing reinforcement extending into new concrete shall be cleaned, straightened, and incorporated into new construction. Cost included with "Concrete Removal".

Remove existing wingwalls to top of existing wingwall pile cap. Cost for removal of railing is included in "Concrete Removal".

**WEST ABUTMENT REPAIR  
BILL OF MATERIAL**

Item	Unit	Total
Structural Repair of Concrete (Depth Equal To or Less Than 5")	Sq. Ft.	1
Epoxy Crack Injection	Foot	11
Concrete Removal	Cu. Yd.	4.9

**CONCRETE REMOVAL & REPAIR DETAILS - WEST ABUTMENT  
FAS ROUTE 1807 SECTION (51-23HB)-6B-1  
LAWRENCE COUNTY  
STATION 94A+66.74  
STRUCTURE NO. 051-0031**

DESIGNED -	MJP
CHECKED -	KWB
DRAWN -	REZ
CHECKED -	TDN

**URS**  
345 E. ASH AVE., SUITE B  
DECATUR, IL. 62526  
TEL. 217-875-4800

SHEET NO. 17 24 SHEETS	F.A.S. RTE.	SECTION	COUNTY	TOTAL SHEETS	SHEET NO.
	1807	(51-23HB)-6B-1	LAWRENCE	60	33
CONTRACT NO. 74115					
FED. ROAD DIST. NO. _ ILLINOIS FED. AID PROJECT					