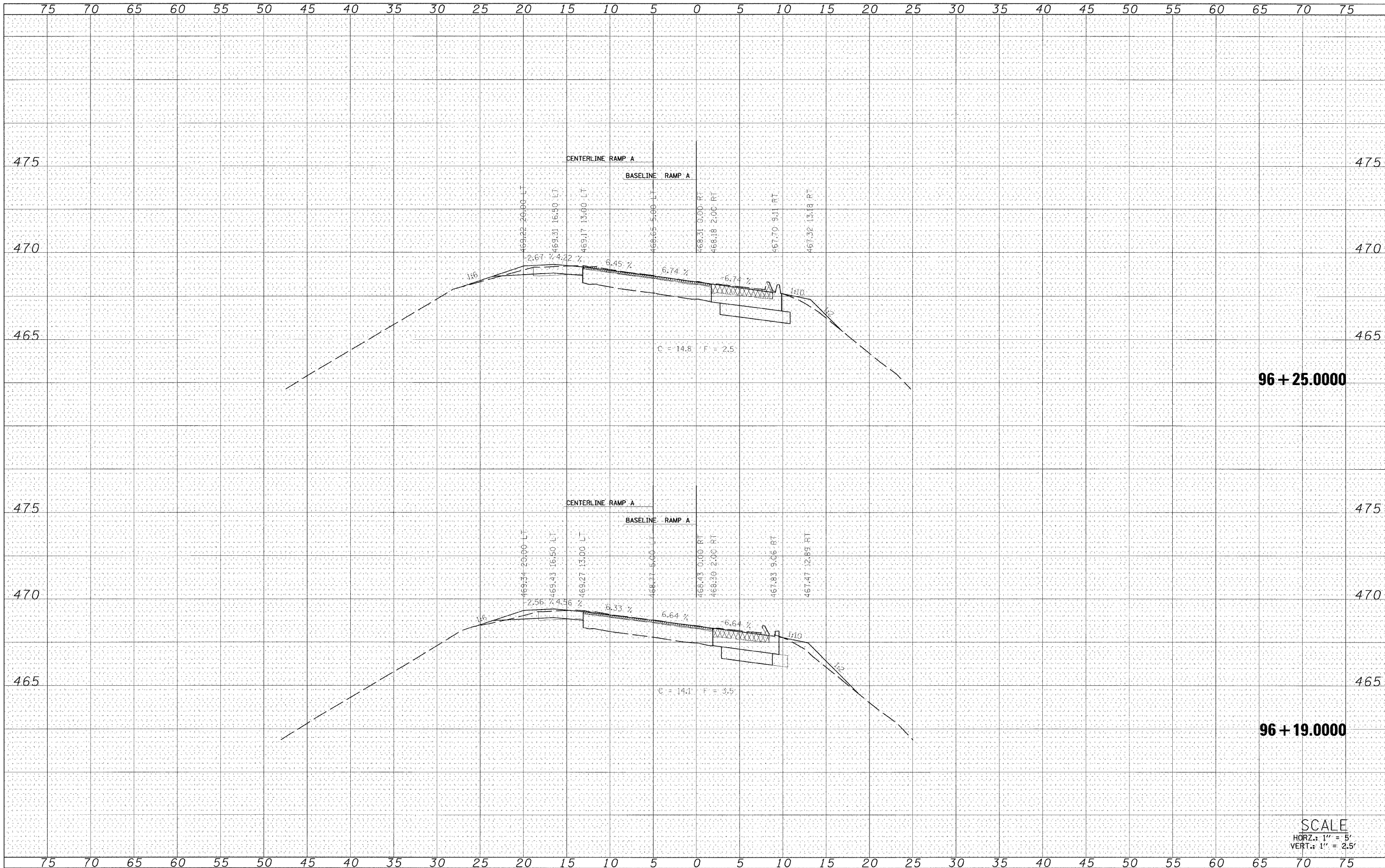


FINAL SURVEY
 DATE
 BY
 SIGNED
 SURVEY
 NOTE BOOK
 TEMPLATE
 AREAS CHECKED

ORIGINAL SURVEY
 DATE
 BY
 SIGNED
 SURVEY
 NOTE BOOK
 TEMPLATE
 AREAS CHECKED



96 + 25.0000

96 + 19.0000

SCALE
 HORZ.: 1" = 5'
 VERT.: 1" = 2.5'

FILE NAME =	USER NAME = #USCT#	DESIGNED - SMK	REVISED -	STATE OF ILLINOIS DEPARTMENT OF TRANSPORTATION	U.S. BUSINESS 50 RAMP A	F.A.S. RTE.	SECTION	COUNTY	TOTAL SHEETS	SHEET NO.	
#FILEL#		DRAWN - SRS	REVISED -			1807	(51-23HB)-6B-1	LAWRENCE	60	56	
		CHECKED -	REVISED -			CONTRACT NO. 74115					
		DATE -	REVISED -			FED. ROAD DIST. NO. ILLINOIS FED. AID PROJECT					

SCALE: SHEET NO. 16 OF 20 SHEETS STA. 96+19.0000 TO STA. 96+25.0000