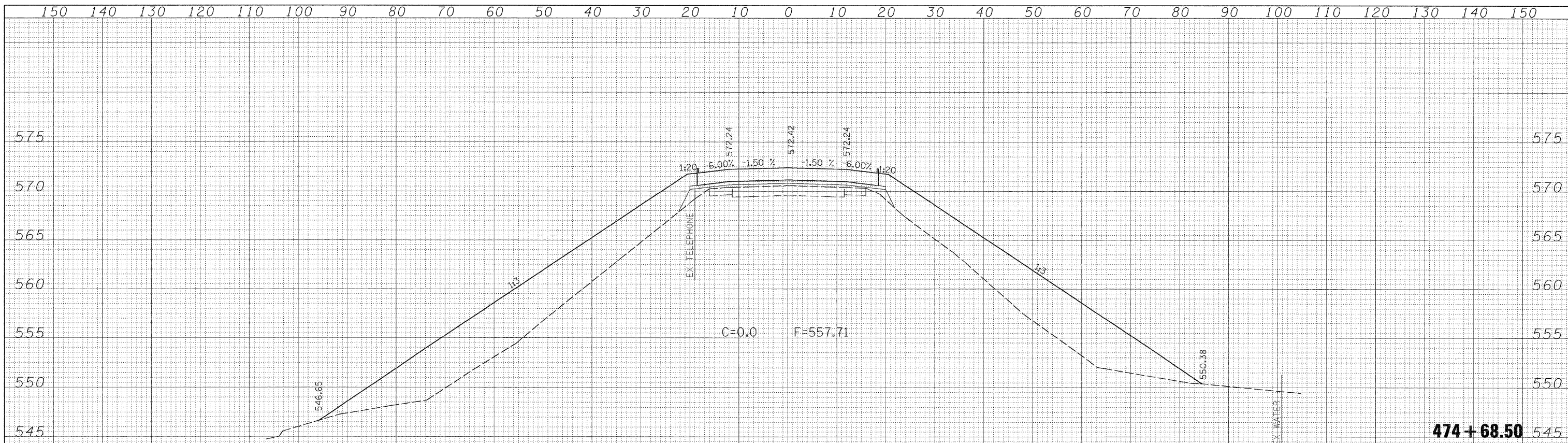
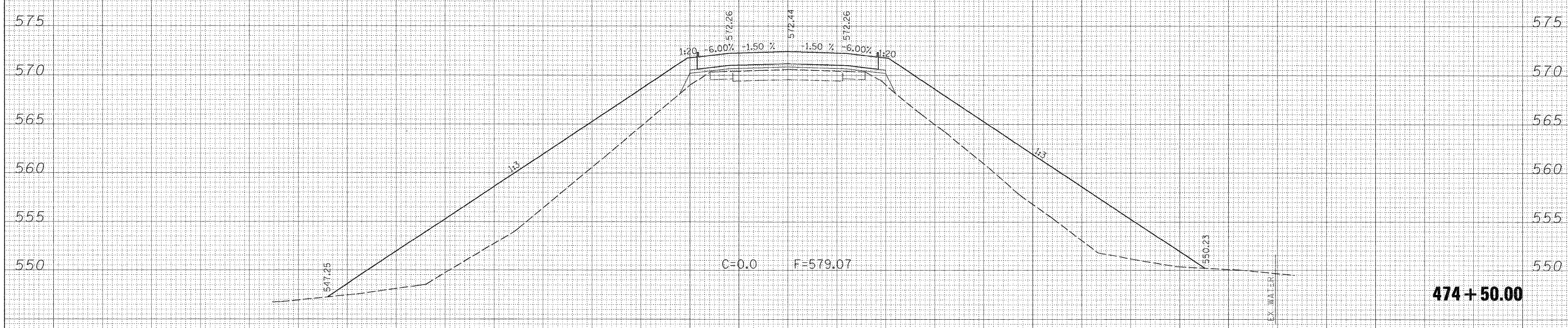


DATE	
BY	
SURVEYED	
PLOTTED	
TEMPLATE	
NOTE BOOK	
AREAS	
CHECKED	
NO.	

DATE	
BY	
SURVEYED	
PLOTTED	
TEMPLATE	
NOTE BOOK	
AREAS	
CHECKED	
NO.	



474 + 68.50



474 + 50.00

FILE NAME =	USER NAME = paul	DESIGNED - JLS	REVISED -	STATE OF ILLINOIS DEPARTMENT OF TRANSPORTATION	CROSS SECTIONS - KINMUNDY/LOUISVILLE ROAD (FAS 2703)			F.A.S. RTE. 2703	SECTION (9-VBR)R	COUNTY CLAY	TOTAL SHEETS 65	SHEET NO. 52
2:\Projects\407-0008_080 Dist 1 Various\WG 2 Kinmundy over 10\rdgn\cshh_NRMUNDY.dgn	PLLOT SCALE = 10.0000' / IN.	DRAWN - MAB	REVISED -		SCALE: 1"=10'	SHEET NO. 8 OF 21 SHEETS	STA. 474+50.00 TO STA. 474+68.50	FED. ROAD DIST. NO.	ILLINOIS FED. AID PROJECT	CONTRACT NO. 74136		
PLLOT DATE = 12/3/2008	DATE - 5-20-08	CHECKED - BRM	REVISED -									
		REVISIED -	REVISED -									