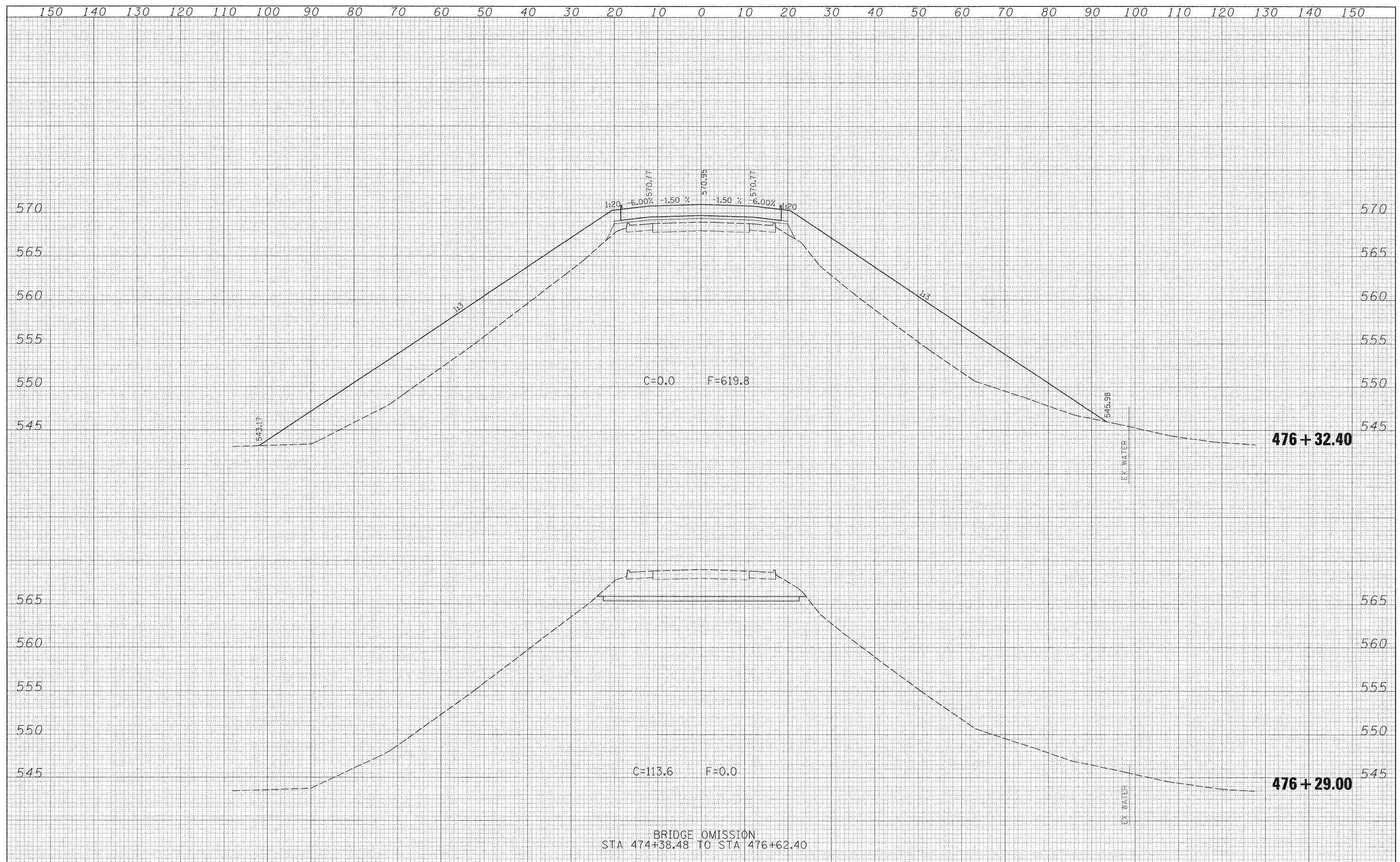


FINAL SURVEY	SURVEYED	DATE
NOTE BOOK NO.	PLOTTED	BY
AREAS CHECKED	TEMPLATE	
	AREAS	
	CHECKED	

ORIGINAL SURVEY	SURVEYED	DATE
NOTE BOOK NO.	PLOTTED	BY
AREAS CHECKED	TEMPLATE	
	AREAS	
	CHECKED	



FILE NAME =	USER NAME = paul	DESIGNED - JLS	REVISED -	<b>STATE OF ILLINOIS</b> <b>DEPARTMENT OF TRANSPORTATION</b>	<b>CROSS SECTIONS - KINMUNDY/LOUISVILLE ROAD (FAS 2703)</b>	F.A.S. RTE. 2703	SECTION (9-VBR)R	COUNTY CLAY	TOTAL SHEETS 65	SHEET NO. 55	
SCALE: 1"=10'	SHEET NO. 11 OF 21 SHEETS	STA. 476+29.00 TO STA. 476+32.40	FED. ROAD DIST. NO.			ILLINOIS FED. AID PROJECT					
PLOT SCALE = 10,000' / IN.		CHECKED - BRM	REVISED -			CONTRACT NO. 74136					
PLOT DATE = 12/3/2008		DATE - 5-20-08	REVISED -								