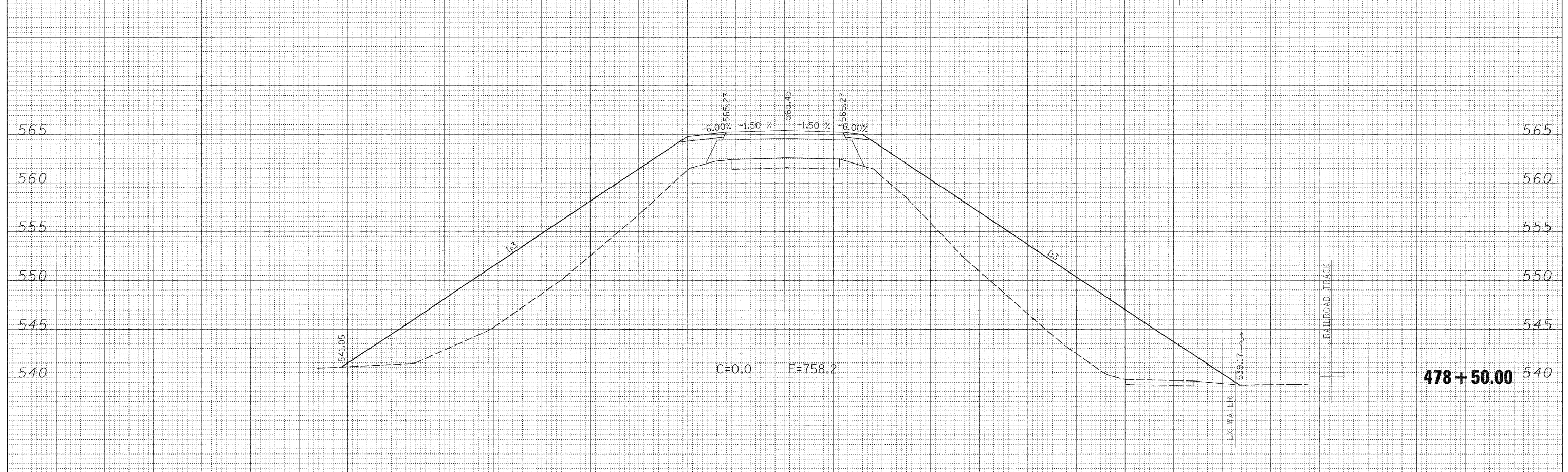
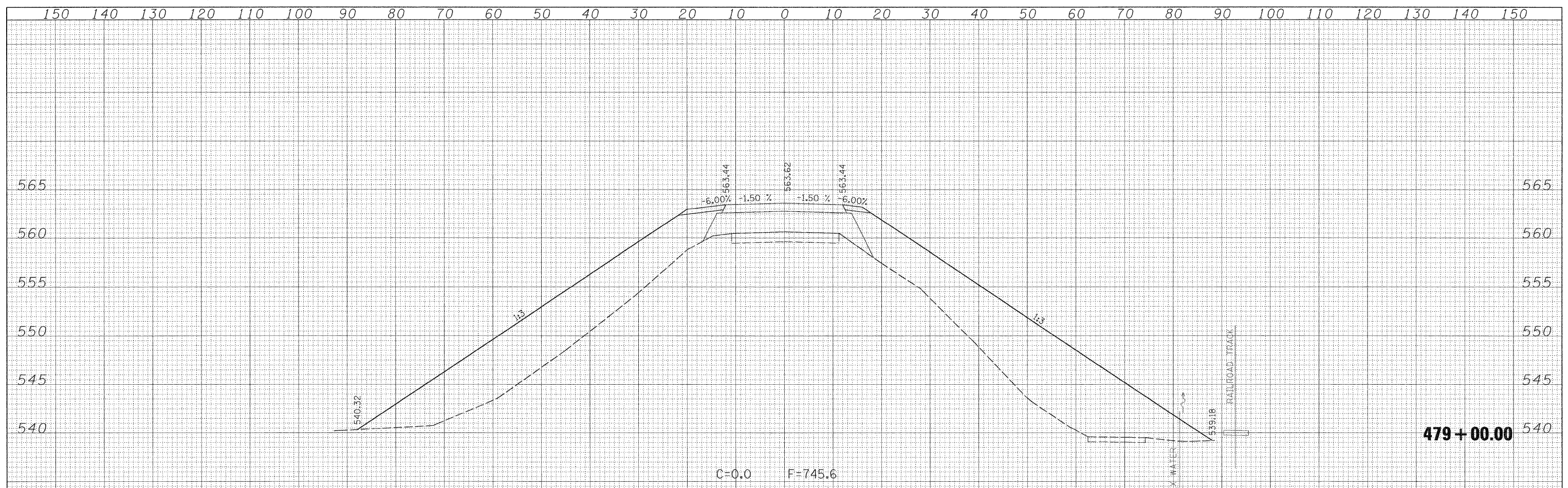


DATE	
BY	
FINAL SURVEY	SURVEYED
NOTE BOOK	PLOTTED
NO.	TEMPLATE
	AREAS
	CHECKED

DATE	
BY	
ORIGINAL SURVEY	SURVEYED
NOTE BOOK	PLOTTED
NO.	TEMPLATE
	AREAS
	CHECKED



FILE NAME =	USER NAME = paul	DESIGNED - JLS	REVISED -	STATE OF ILLINOIS DEPARTMENT OF TRANSPORTATION	CROSS SECTIONS - KINMUNDY/LOUISVILLE ROAD (FAS 2703)				F.A.S. RTE. 2703	SECTION (9-VBR)R	COUNTY CLAY	TOTAL SHEETS 65	SHEET NO. 58
SCALE: 1"=10'	SHEET NO. 14 OF 21 SHEETS	STA. 478+50.00 TO STA. 479+00.00	FED. ROAD DIST. NO.		ILLINOIS FED. AID PROJECT				CONTRACT NO. 74136				
DRAWN - MAB	CHECKED - BRM	DATE - 5-20-08	REVISED -										
REVISED -	REVISED -	REVISED -											