

CONSTRUCTION PROJECT MANAGER : RICK ANDERSON (309) 693-7615

SEE SHEET 2 FOR INDEX OF SHEETS AND LIST OF STANDARDS

# STATE OF ILLINOIS DEPARTMENT OF TRANSPORTATION DIVISION OF HIGHWAYS PROPOSED HIGHWAY PLANS

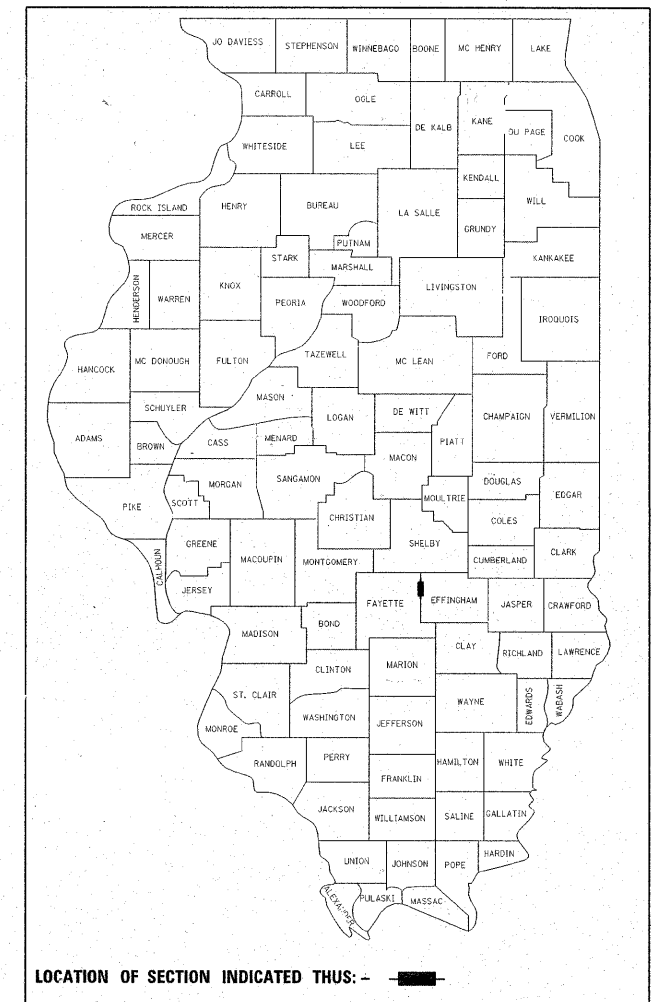
F.A.S. ROUTE 2801 (IL. RTE. 128)  
SECTION (102B)B-1  
PROJECT: *ACRS-2801(101)*  
EFFINGHAM COUNTY  
C-97-034-07

IL. RTE. 128 OVER WOLF CREEK  
BRIDGE REPLACEMENT

F.A.S. RTE.	SECTION	COJNTY	TOTAL SHEETS	SHEET NO.
2801	(102B)B-1	EFFINGHAM	51	1
FED. ROAD DIST. NO. 7	ILLINOIS	CO. TRACT NO. 74232		

\*51+4=55

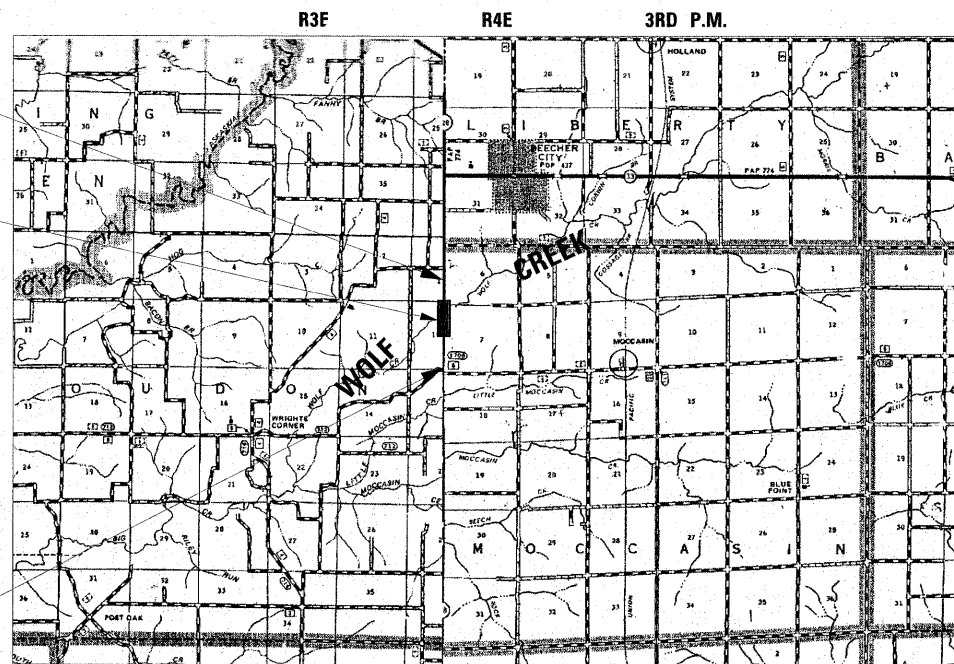
D-97-020-07



BEGIN IMPROVEMENTS  
STA. 968 + 50.00

PROJECT LOCATION:  
SECTION (102B)B-1  
REMOVE AND REPLACE  
BRIDGE CARRYING IL 128  
OVER WOLF CREEK  
EX. S.N. 025-0046  
PR. S.N. 025-0105  
STA. 974 + 76.00

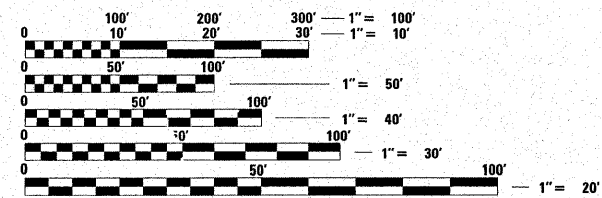
END IMPROVEMENTS  
STA. 980 + 50.00



LOCATION MAP

GROSS LENGTH OF IMPROVEMENT = 1200 FEET = 0.23 MILES  
NET LENGTH OF IMPROVEMENT = 1200 FEET = 0.23 MILES

ADT = 1550  
TOWNSHIPS:  
MOCCASIN IN EFFINGHAM COUNTY  
LOUDON IN FAYETTE COUNTY



FULL SIZE PLANS HAVE BEEN PREPARED USING STANDARD ENGINEERING SCALES. REDUCED SIZED PLANS WILL NOT CONFORM TO STANDARD SCALES. IN MAKING MEASUREMENTS ON REDUCED PLANS, THE ABOVE SCALES MAY BE USED.

J.U.L.I.E.  
JOINT UTILITY LOCATION INFORMATION FOR EXCAVATION  
1-800-892-0123  
OR 811

PREPARED BY:



7615 NORTH HARKER DRIVE  
PEOP A, ILLINOIS 616 5  
TEL 309-693-7615  
FAX 309-693-7616

CONTRACT NO. 74232

STATE OF ILLINOIS  
DEPARTMENT OF TRANSPORTATION  
DIVISION OF HIGHWAYS

SUBMITTED December 12 20 08

Roger L. Driskell  
DEPUTY DIRECTOR OF HIGHWAYS, REGION ENGINEER

January 30, 20 09  
Charles G. Jansoll  
ENGINEER OF DESIGN AND ENVIRONMENT

January 30, 20 09  
Christine M. Reed  
DIRECTOR OF HIGHWAYS, CHIEF ENGINEER

PRINTED BY THE AUTHORITY  
OF THE STATE OF ILLINOIS

PROJECT ENGINEER: TOM ROMAN (217) 342-8320  
SQUAD LEADER: JENNIFER WENTHE (217) 342-8361