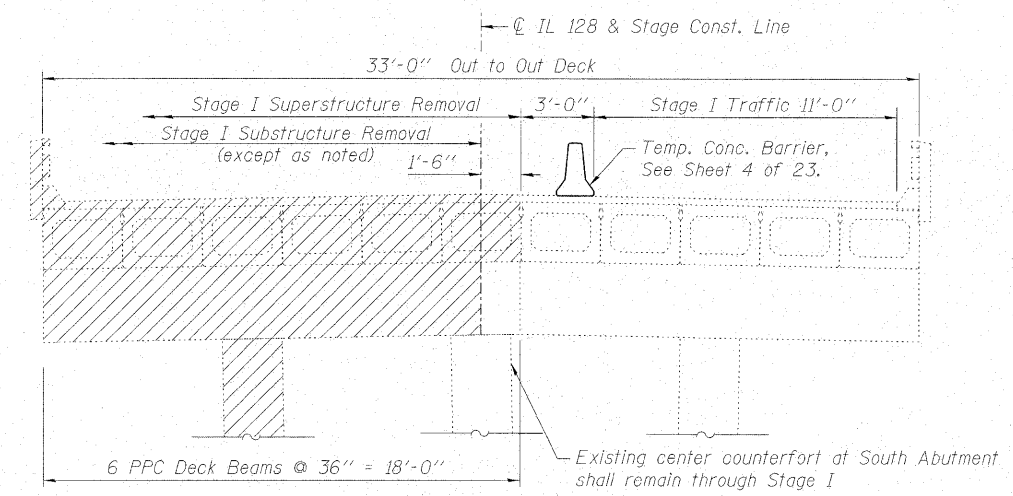


STATE OF ILLINOIS
DEPARTMENT OF TRANSPORTATION

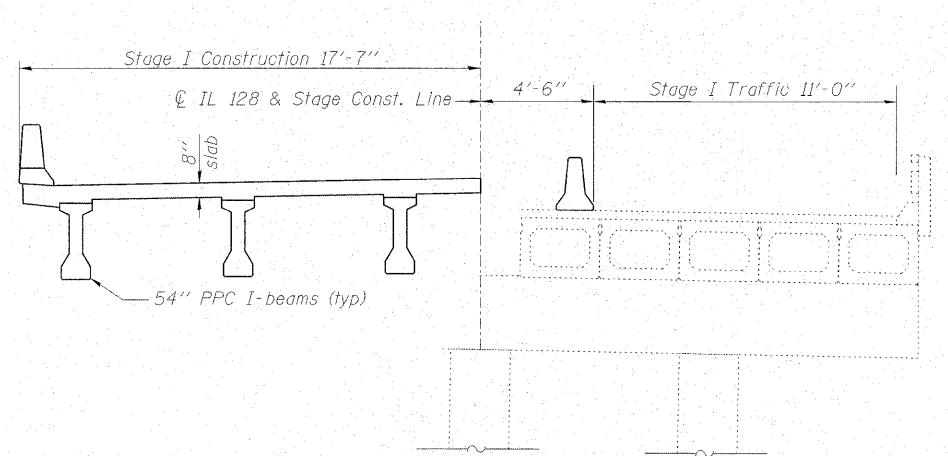
ROUTE NO.	SECTION	COUNTY	TOTAL SHEETS	SHEET NO.
FAS 2801 IL 128	(102B) B-1	EFFINGHAM	51	25
FED. ROAD DIST. NO. 7		ILLINOIS	FED. AID PROJECT	

SHEET NO. 3
23 SHEETS

Contract # 74232

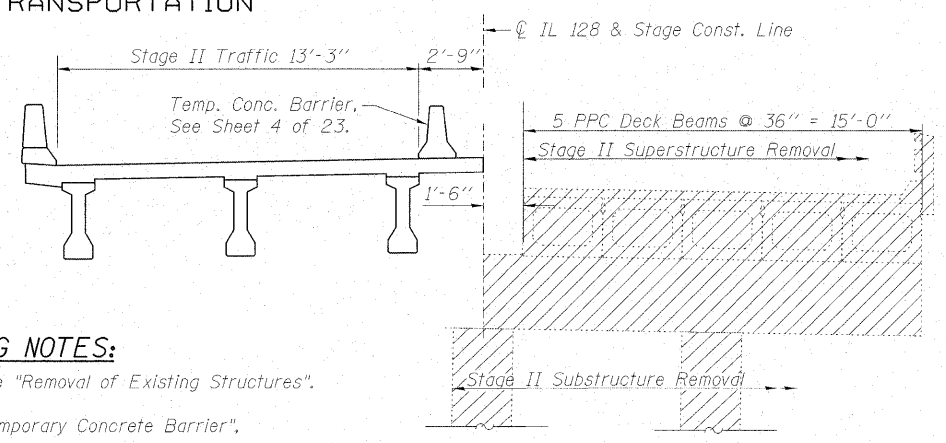


STAGE I REMOVAL
(Looking South)

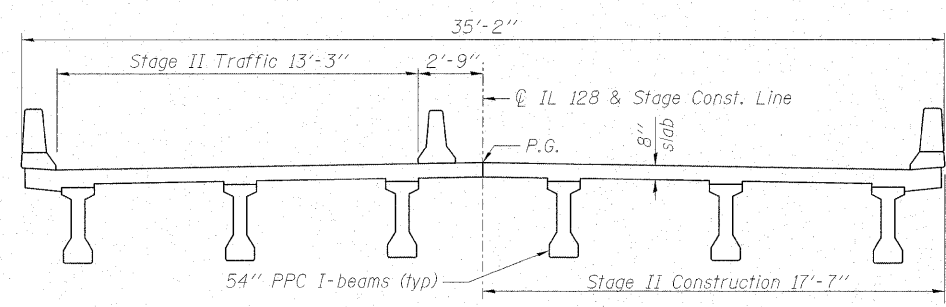


STAGE I CONSTRUCTION
(Looking South)

- STAGING NOTES:**
- Hatched areas indicate "Removal of Existing Structures".
 - For quantities of "Temporary Concrete Barrier", see Roadway Plans.

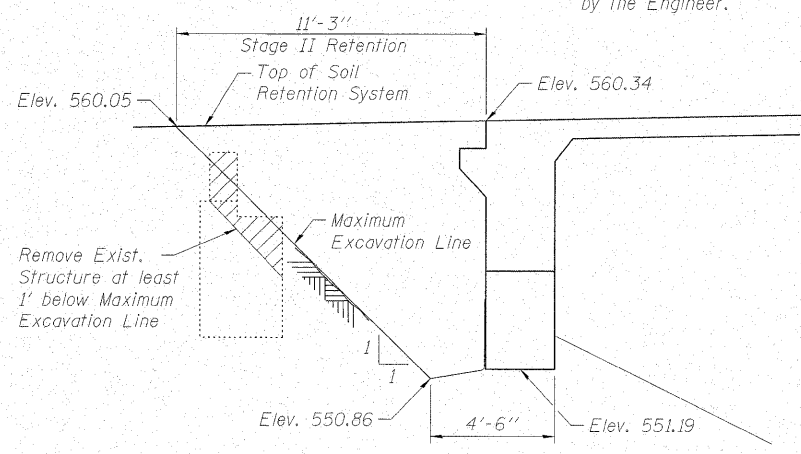


STAGE II REMOVAL
(Looking South)

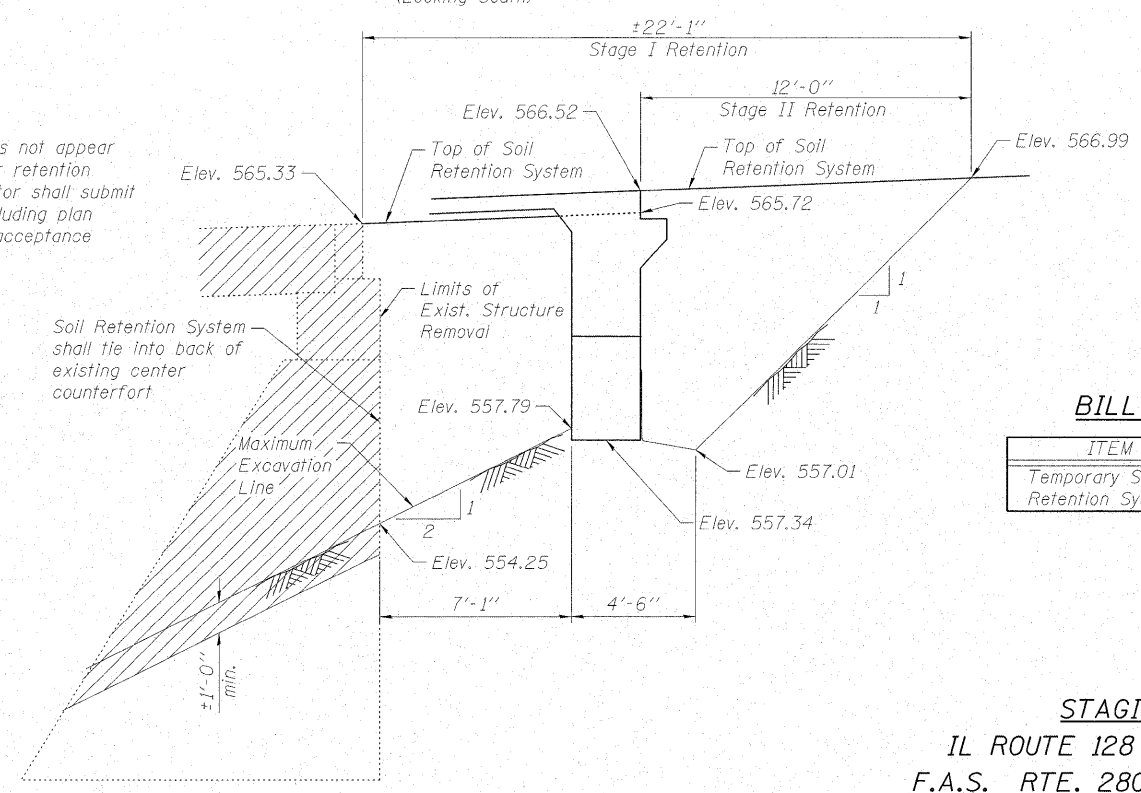


STAGE II CONSTRUCTION
(Looking South)

Note:
A cantilevered sheet piling design does not appear feasible and additional members or other retention systems may be necessary. The contractor shall submit a temporary retention system design including plan details and calculations for review and acceptance by the Engineer.



TEMPORARY SOIL RETENTION SYSTEM
(North Abutment)



TEMPORARY SOIL RETENTION SYSTEM
(South Abutment)

BILL OF MATERIAL

ITEM	UNIT	TOTAL
Temporary Soil Retention System	Sq. Ft.	218

STAGING DETAILS
IL ROUTE 128 OVER WOLF CREEK
F.A.S. RTE. 2801 - SECTION (102B)B-1
EFFINGHAM COUNTY
STATION 974+76.00
STRUCTURE NO. 025-0105

MAURER & STUTZ, INC.
ENGINEERS ARCHITECTS

DESIGNED -	BAS
CHECKED -	KEF
DRAWN -	LAD
CHECKED -	RJA