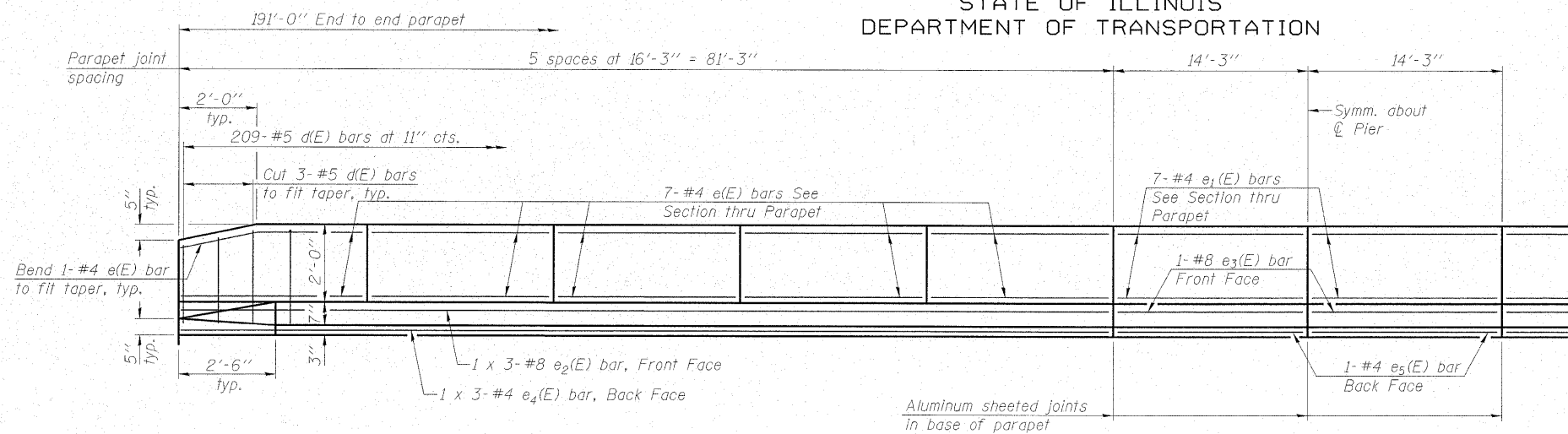


STATE OF ILLINOIS
DEPARTMENT OF TRANSPORTATION

ROUTE NO.	SECTION	COUNTY	TOTAL SHEETS	SHEET NO.
FAS 2801 IL 128	(102B) B-1	EFFINGHAM	51	33
FED. ROAD DIST. NO. 7		ILLINOIS	FED. AID PROJECT-	

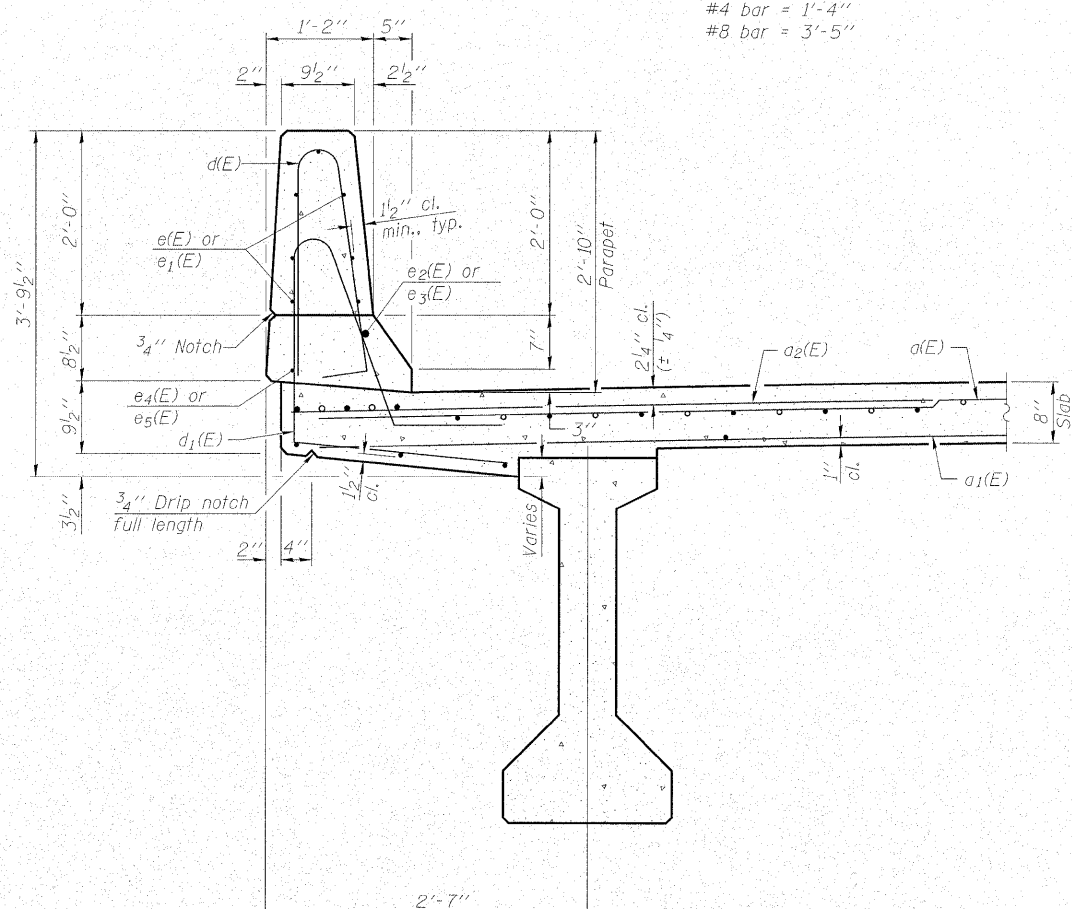
SHEET NO. 11
23 SHEETS

Contract # 74232

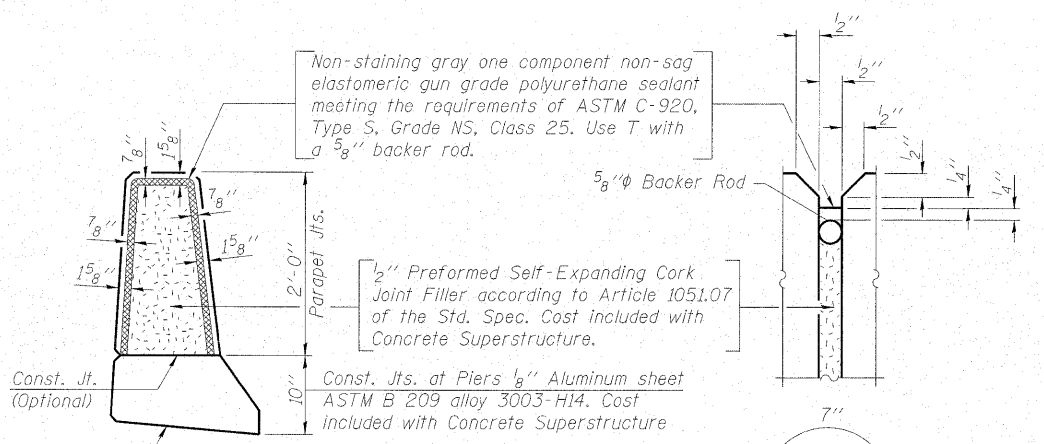


INSIDE ELEVATION OF PARAPET

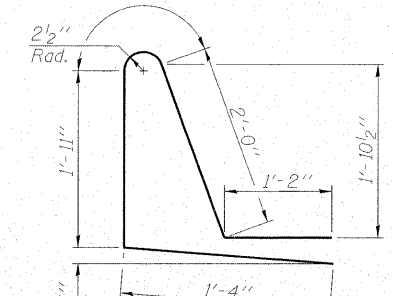
MINIMUM BAR LAP
(Parapet)
#4 bar = 1'-4"
#8 bar = 3'-5"



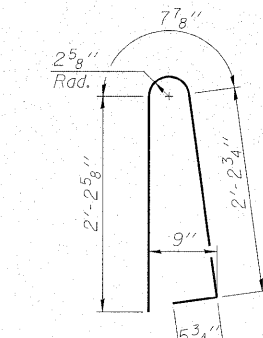
SECTION THRU PARAPET



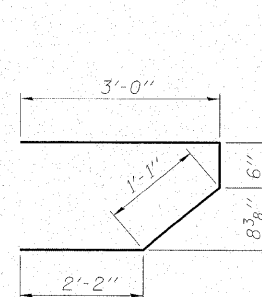
PARAPET JOINT DETAILS



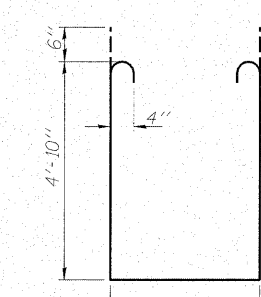
BAR d1(E)



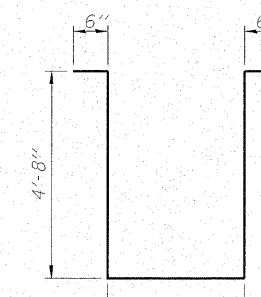
BAR d(E)



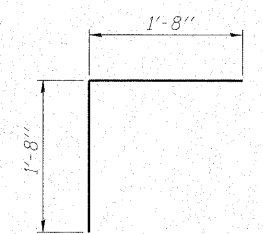
BAR s(E)



BAR s1(E)



BAR s2(E)



BAR v(E)

**SUPERSTRUCTURE
BILL OF MATERIAL**

Bar	No.	Size	Length	Shape
d(E)	574	#5	17'-1"	—
a1(E)	460	#5	16'-9"	—
a2(E)	574	#6	6'-0"	—
b(E)	350	#5	28'-8"	—
b1(E)	92	#6	46'-0"	—
b2(E)	256	#5	25'-4"	—
d(E)	418	#5	5'-7"	⌒
d1(E)	418	#5	7'-0"	⌒
e(E)	140	#4	15'-11"	—
e1(E)	28	#4	13'-11"	—
e2(E)	12	#8	29'-4"	—
e3(E)	4	#8	13'-11"	—
e4(E)	12	#4	27'-11"	—
e5(E)	4	#4	13'-11"	—
m(E)	8	#6	16'-4"	—
m1(E)	12	#6	17'-3"	—
m2(E)	24	#6	7'-8"	—
m3(E)	16	#6	3'-10"	—
m4(E)	4	#6	1'-4"	—
m5(E)	8	#6	1'-10"	—
m6(E)	6	#8	5'-10"	—
m7(E)	16	#4	5'-2"	—
m8(E)	8	#4	2'-5"	—
s(E)	72	#5	6'-9"	⌒
s1(E)	64	#4	12'-10"	⌒
s2(E)	26	#4	12'-2"	⌒
v(E)	68	#5	3'-4"	⌒
Reinforcement Bars, Epoxy Coated		Pound		58180
Concrete Superstructure		Cu. Yd.		258.6

Bars indicated thus 1 x 2-#5 etc. indicates 1 line of bars with 2 lengths per line.

SUPERSTRUCTURE DETAILS
IL ROUTE 128 OVER WOLF CREEK
F.A.S. RTE. 2801 - SECTION (102B)B-1
EFFINGHAM COUNTY
STATION 974+76.00
STRUCTURE NO. 025-0105

MAURER STUTZ, INC.
ENGINEERS

DESIGNED -	BAS
CHECKED -	KEF
DRAWN -	LAD
CHECKED -	RJA