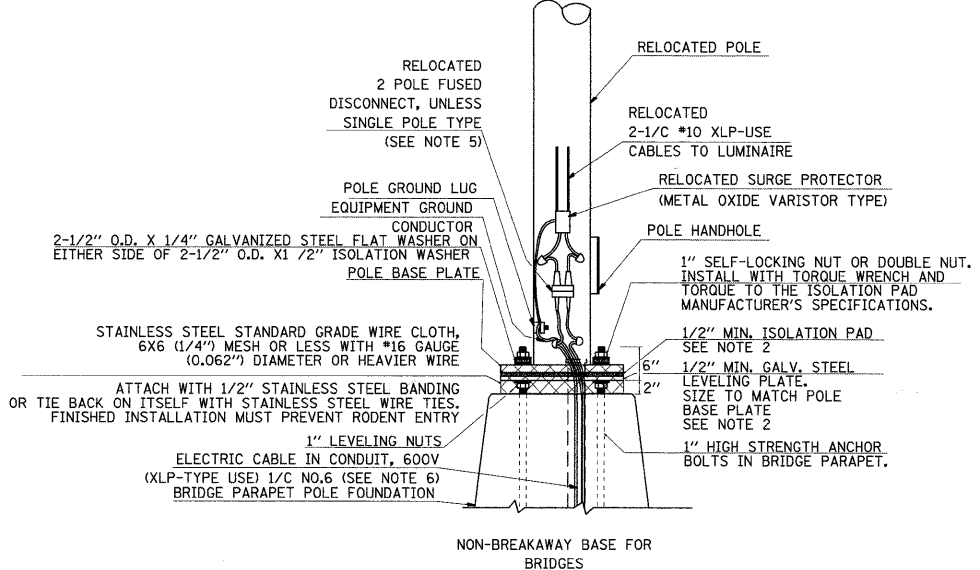
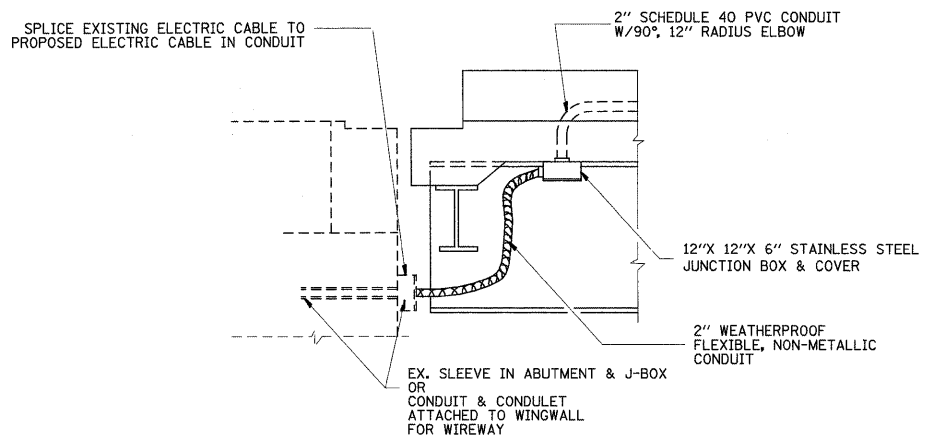


SCHEDULE OF QUANTITIES			TOTAL QUANTITIES
CODE NO	ITEM	UNIT	
81300550	JUNCTION BOX, STAINLESS STEEL, ATTACHED TO STRUCTURE, 12" x 12" x 6"	EACH	2
81702130	ELECTRIC CABLE IN CONDUIT, 600V (XLP-TYPE USE) 1/C NO. 6	FOOT	1760
X8440N6	RELOCATE EXISTING LIGHTING UNIT, SPECIAL	EACH	3



POLE BASE MOUNTING & WIRING

- NOTES
- LOCATE POLES OVER BRIDGE PIERS WHERE POSSIBLE.
 - THE VIBRATION ISOLATION PAD AND LEVELING PLATE SHALL MATCH THE FOOTPRINT OF THE POLE BASE PLATE.
 - THICKNESS OF ISOLATION PAD AND WASHERS SHALL BE ACCORDING TO THE ISOLATION PAD MANUFACTURER'S RECOMMENDATIONS BASED UPON POLE HEIGHT AND LOADING.
 - SHOULD THE LENGTH OF THE EXPOSED ANCHOR BOLTS BE TOO SHORT ON AN EXISTING BRIDGE TO MOUNT THE POLES AS SHOWN, THEN THE LEVELING PLATE SHALL BE MOUNTED DIRECTLY ON THE CONCRETE AND LEVELED WITH STAINLESS STEEL WASHERS. REMOVE CONCRETE AS DIRECTED BY THE ENGINEER TO FULLY THREAD THE TOP NUT.
 - CABLE SPLICES ACCORDINGLY TO ART. 1066.06 WITH COMPRESSION CONNECTORS APPROPRIATELY TAPED.
 - 2-1/C NO.6 & 1/C NO.6 GROUND.



SECTION AT ABUTMENTS