

F.A.I. RTE.	SECTION	COUNTY	TOTAL SHEETS	SHEET NO.
64	82-2VB-2	ST. CLAIR	153	1
FED. ROAD DIST. NO.	ILLINOIS	CONTRACT NO. 76867		

STATE OF ILLINOIS
DEPARTMENT OF TRANSPORTATION
DIVISION OF HIGHWAYS
PROPOSED
HIGHWAY PLANS

F.A.I. ROUTE 64 (I-64 OVER METROLINK)
SECTION 82-2VB-2
PROJECT ACBHI-064-1(123)002
SUPERSTRUCTURE REPLACEMENT
ST. CLAIR COUNTY
C-98-035-05

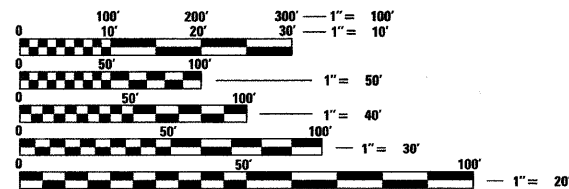
INDEX OF SHEETS

- 1 COVER SHEET
- 2 GENERAL NOTES, HIGHWAY STANDARDS, & COMMITMENTS
- 3 SUMMARY OF QUANTITIES
- 4 - 5 TYPICAL SECTIONS
- 6 - 11 SCHEDULE OF QUANTITIES
- 12 ALIGNMENT, TIES, AND BENCHMARKS
- 13 - 15 REMOVAL PLAN SHEETS
- 16 - 18 PLAN AND PROFILE SHEETS
- 19 EXISTING SITE PLAN
- 20 - 41 TRAFFIC CONTROL PLAN (STAGE I, II, & III)
- 42 - 44 EROSION AND SEDIMENT CONTROL SHEETS
- 45 - 46 DRAINAGE PLAN AND PROFILE SHEETS
- 47 - 50 PLAT OF HIGHWAYS
- 51 - 54 PAVEMENT MARKING PLAN SHEETS
- 55 LIGHTING DETAILS
- 56 - 114 BRIDGE PLANS
- 115 - 130 MISCELLANEOUS DETAILS
- 131 - 153 CROSS SECTIONS

D-98-017-05

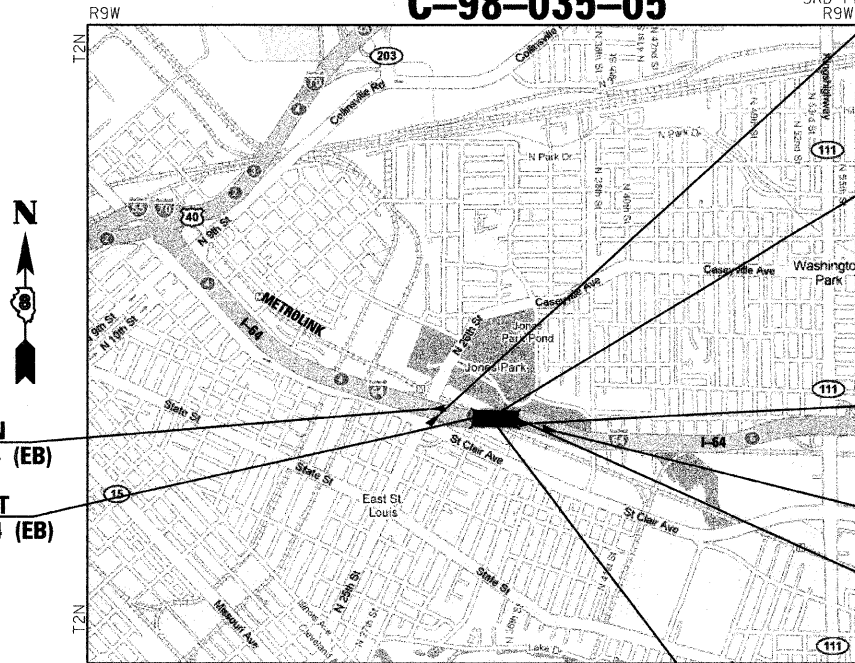


PROJECT ENGINEER - PATTI LEBEAU (618) 346-3179
PROJECT MANAGER - ART MUEHLFELD (618) 346-3209



FULL SIZE PLANS HAVE BEEN PREPARED USING STANDARD ENGINEERING SCALES. REDUCED SIZED PLANS WILL NOT CONFORM TO STANDARD SCALES. IN MAKING MEASUREMENTS ON REDUCED PLANS, THE ABOVE SCALES MAY BE USED.

J.U.L.I.E.
JOINT UTILITY LOCATION INFORMATION FOR EXCAVATION
1-800-892-0123
OR 811



BEGIN SECTION
STA. 121 + 95.44 (EB)

BEGIN PROJECT
STA. 134 + 03.44 (EB)

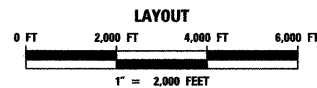
STATION EQUATION
STA. 124 + 65.72(BK) =
STA. 124 + 65.39(AH)

PROP. SN 082-0163 (WB)
BRIDGE SECTION 82-2VB-2
STA. 135 + 02.71
486' - 0 1/4" BACK TO BACK

STATION EQUATION
STA. 145 + 63.92(BK) =
STA. 145 + 64.48(AH)

END SECTION
STA. 151 + 87.48 (EB)

END PROJECT
STA. 138 + 89.46 (EB)



PROP. SN 082-0162 (EB)
BRIDGE SECTION 82-2VB-2
STA. 136 + 46.45
486' - 0 1/4" BACK TO BACK

GROSS LENGTH = 486.02' (0.092 MILES)
NET LENGTH = 486.02' (0.092 MILES)

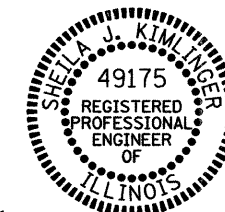
DESIGN DESIGNATION NA

	PRESENT (2009)	FUTURE (2029)
ADT	78,342	95,592
% SU	3.0%	3.0%
% MU	10.5%	10.5%

**THOUVENOT,
WADE &
MOERCHEN, INC.**

CORPORATE OFFICE
4940 Old Collinsville Road
Swansea, Illinois 62226
Tel: 618.624.4488
Fax: 618.624.6688

SWANSEA • WATERLOO • EDWARDSVILLE • CARBONDALE • ST. CHARLES



Sheila J. Kimlinger 8/7/09
SHEILA J. KIMLINGER, P.E. EXPIRATION DATE
LICENSE NO. 062-049175 11-30-2009

STATE OF ILLINOIS
DEPARTMENT OF TRANSPORTATION
DIVISION OF HIGHWAYS

SUBMITTED August 12 20 09
Mark C. James
DEPUTY DIRECTOR OF HIGHWAYS, REGION 5 ENGINEER

October 2, 20 09
Charles G. Ingersoll
ENGINEER OF DESIGN AND ENVIRONMENT

October 2, 20 09
Christine M. Reed
DIRECTOR OF HIGHWAYS, CHIEF ENGINEER

**PRINTED BY THE AUTHORITY
OF THE STATE OF ILLINOIS**

CONTRACT NO. 76867