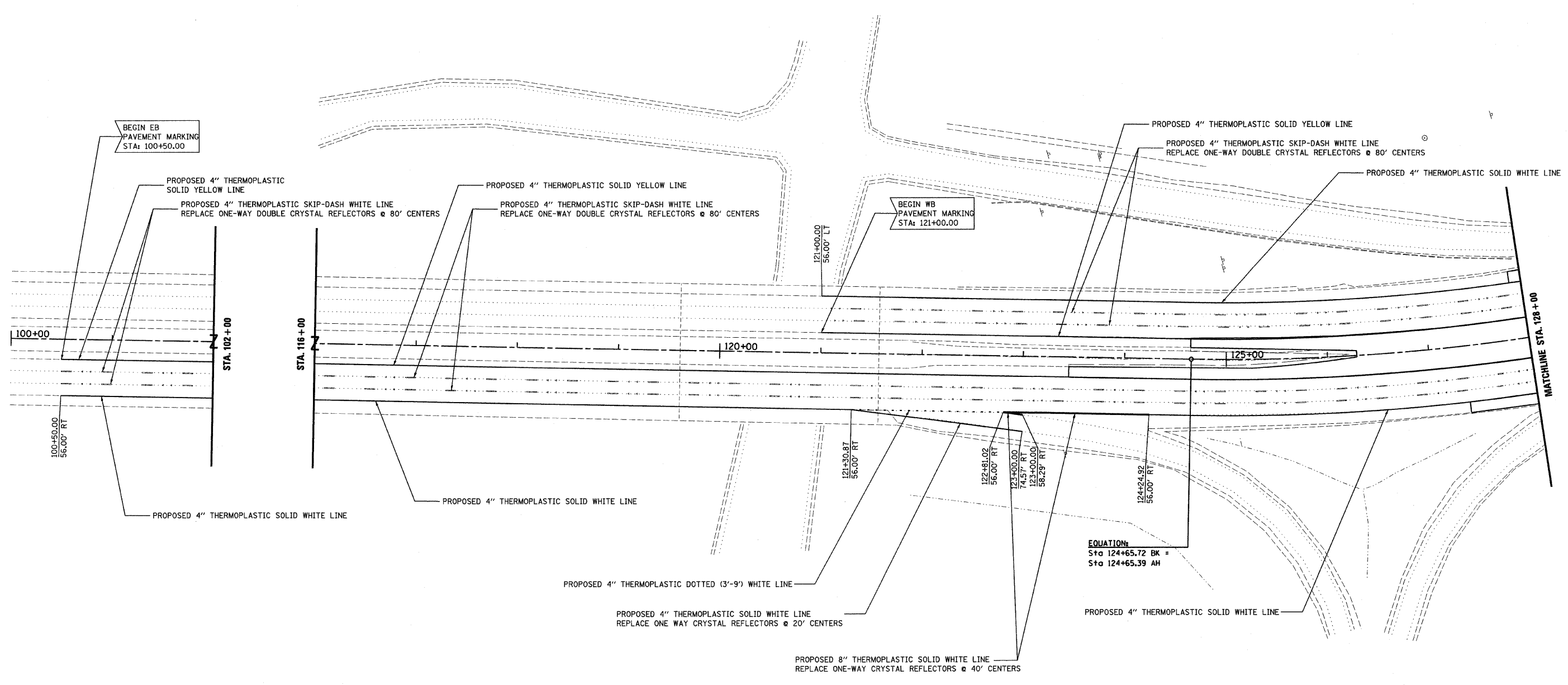
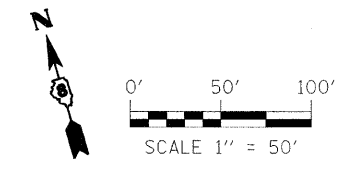


NOTE:  
 SIGNAGE TO REMAIN IN PLACE UNLESS OTHERWISE NOTED  
 PAVEMENT MARKING TO BE PLACED AS INDICATED IN STANDARD 780001.  
 RAISED REFLECTIVE PAVEMENT MARKERS TO BE PLACED AS INDICATED IN STANDARD 781001.



EQUATION:  
 Sta 124+65.72 BK =  
 Sta 124+65.39 AH



FILE NAME =	USER NAME = mschwier.john	DESIGNED - DRB	REVISED -	<b>STATE OF ILLINOIS DEPARTMENT OF TRANSPORTATION</b>	<b>PAVEMENT MARKING PLAN</b>	F.A.I. RTE.	SECTION	COUNTY	TOTAL SHEETS	SHEET NO.
P:\0606015\dgn\CADD Sheets\0876876-shr-bnk-001.dgn	DRAWN - MLS	REVISED -	64			82-2VB-2	ST. CLAIR	153	51	
PLOT SCALE = 50.0000' / IN.	CHECKED - SJK	REVISED -	CONTRACT NO. 76867							
PLOT DATE = 8/7/2009	DATE -	REVISED -	FED. ROAD DIST. NO. 8 ILLINOIS FED. AID PROJECT							
SCALE: SHEET NO. 1 OF 4 SHEETS STA. 100+50.00 TO STA. 128+00.00										