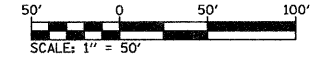
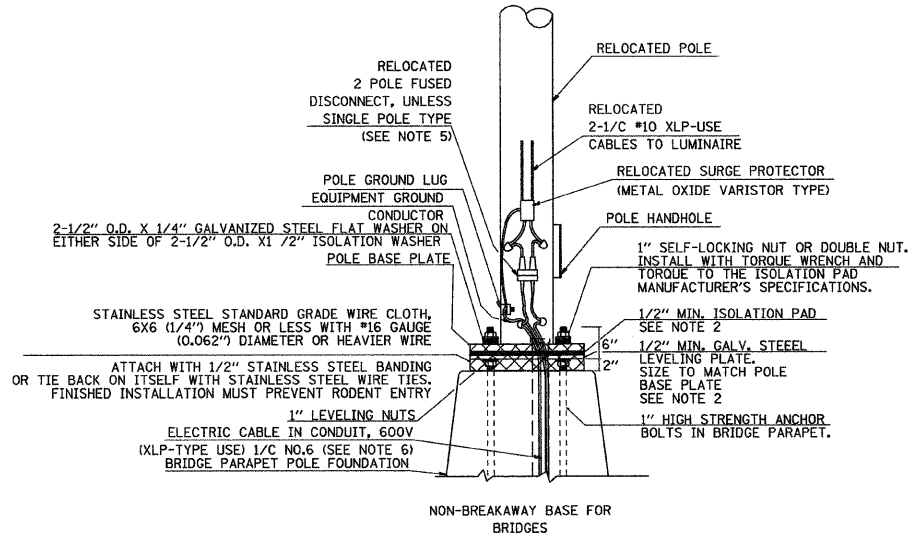


NOTES:
 1. SEE BRIDGE PLANS FOR STATION/OFFSET OF RELOCATED LIGHTING UNIT, SPECIAL LOCATIONS.
 2. 2" SCHEDULE 40 PVC CONDUIT EMBEDDED IN STRUCTURE SHALL BE INCLUDED IN THE "CONCRETE SUPERSTRUCTURE" PAY ITEM.
 3. CONTRACTOR SHALL PROVIDE STORAGE FOR ALL REMOVED LIGHTING UNITS SUCH THAT NO DAMAGE IS SUSTAINED.
 4. ALL EXISTING LIGHTING UNITS LOCATED ON THE BRIDGE SHALL REMAIN OPERATIONAL DURING STAGE I CONSTRUCTION. DURING STAGE II CONSTRUCTION, LIGHTING UNITS NO. 97 AND NO. 98 SHALL BE REMOVED AND STORED, AND LIGHTING UNIT NO.96 SHALL REMAIN OPERATIONAL. LIGHTING UNITS NO. 97 AND NO. 98 SHALL BE REINSTALLED AND MADE FULLY OPERATIONAL, TO THE SATISFACTION OF THE ENGINEER, BEFORE STAGE III CONSTRUCTION IS TO BEGIN. LIGHTING UNIT NO. 96 SHALL BE REMOVED AND REINSTALLED, TO THE SATISFACTION OF THE ENGINEER, DURING STAGE III CONSTRUCTION.

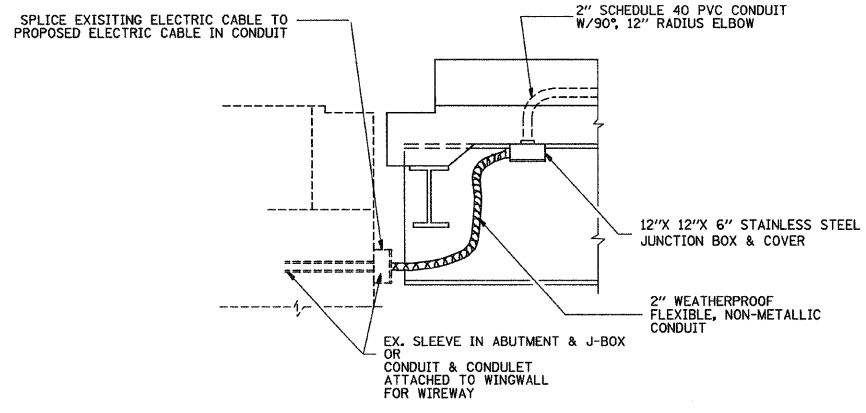


SCHEDULE OF QUANTITIES			TOTAL QUANTITIES
CODE NO	ITEM	UNIT	
81300550	JUNCTION BOX, STAINLESS STEEL, ATTACHED TO STRUCTURE, 12" x 12" x 6"	EACH	2
81702150	ELECTRIC CABLE IN CONDUIT, 600V (XLP-TYPE USE) 1/C NO. 6	FOOT	1760
X844016	RELOCATE EXISTING LIGHTING UNIT, SPECIAL	EACH	3



POLE BASE MOUNTING & WIRING

- NOTES
- LOCATE POLES OVER BRIDGE PIERS WHERE POSSIBLE.
 - THE VIBRATION ISOLATION PAD AND LEVELING PLATE SHALL MATCH THE FOOTPRINT OF THE POLE BASE PLATE.
 - THICKNESS OF ISOLATION PAD AND WASHERS SHALL BE ACCORDING TO THE ISOLATION PAD MANUFACTURER'S RECOMMENDATIONS BASED UPON POLE HEIGHT AND LOADING.
 - SHOULD THE LENGTH OF THE EXPOSED ANCHOR BOLTS BE TOO SHORT ON AN EXISTING BRIDGE TO MOUNT THE POLES AS SHOWN, THEN THE LEVELING PLATE SHALL BE MOUNTED DIRECTLY ON THE CONCRETE AND LEVELLED WITH STAINLESS STEEL WASHERS. REMOVE CONCRETE AS DIRECTED BY THE ENGINEER TO FULLY THREAD THE TOP NUT.
 - CABLE SPLICES ACCORDINGLY TO ART. 1066.06 WITH COMPRESSION CONNECTORS APPROPRIATELY TAPED.
 - 2-1/C NO.6 & 1/C NO.6 GROUND.



SECTION AT ABUTMENTS