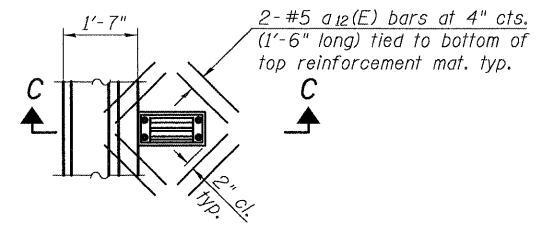
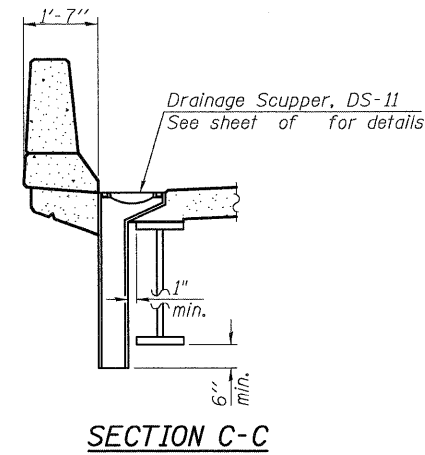


*Order a₂(E) and a₃(E) bars full length cut to fit skew and use remainder of bars in opposite end.
**See Section B-B.

Notes:
See Sheet 25 of 59 for superstructure details, Bill of Material and Section B-B.
See Sheet 24 of 59 for parapet reinforcement.
See Sheet 28 of 59 for Scupper Details.
Bars indicated thus 20 x 3-#5 etc. indicates 20 lines of bars with 3 lengths per line.

HALF PLAN
(spans 2 & 3)

MIN. BAR LAP
#5 bars = 1'-8"
#6 bars = 2'-0"
#9 bars = 5'-9"



Cut longitudinal reinforcement to clear drainage scuppers.
Scuppers shall be located clear of all cross frames.

EDGE BEAMS BAR SPLICER (E) SCHEDULE

| No. Req'd. | Spliced Bar | Location |
|------------|--------------------|----------|
| 8 | a ₅ (E) | Top |
| 2 | a ₇ (E) | Bottom |
| 6 | *** | Bottom |

***Bar splicer stands alone in Stage I.
See sheet 59 of 59 for detail.

| | | | | |
|--|--|---------------------------|--|----------------------------------|
| COOMBE-BLOXDORF P.C. Engineers / Land Surveyors Springfield, Illinois Design Firm License No. 184-002703 | PROJECT NO. 07004 SCALE DATE 12/11/08 DRAWN BY TFG CHECKED BY RM/MCB | SHEET NO. 21 59 SHEETS | F.A.I. RTE. 64 SECTION 82-2VB COUNTY ST. CLAIR CONTRACT NO. 76867 | TOTAL SHEETS 153 SHEET NO. 76 |
| | FED. ROAD DIST. NO. 7 ILLINOIS FED. AID PROJECT | | | |

USER NAME = CFC