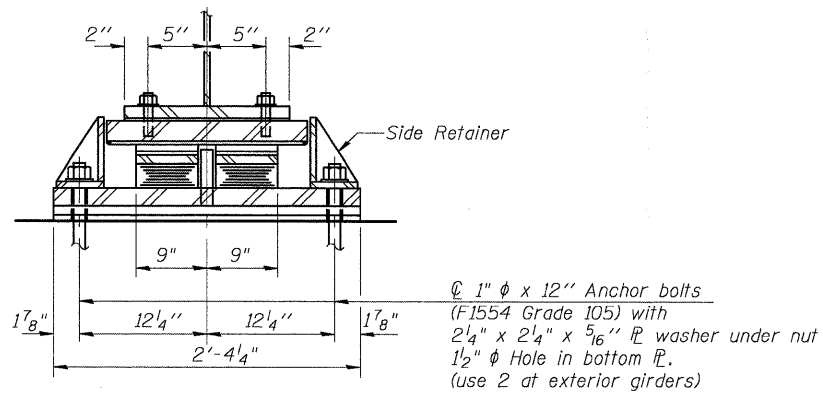
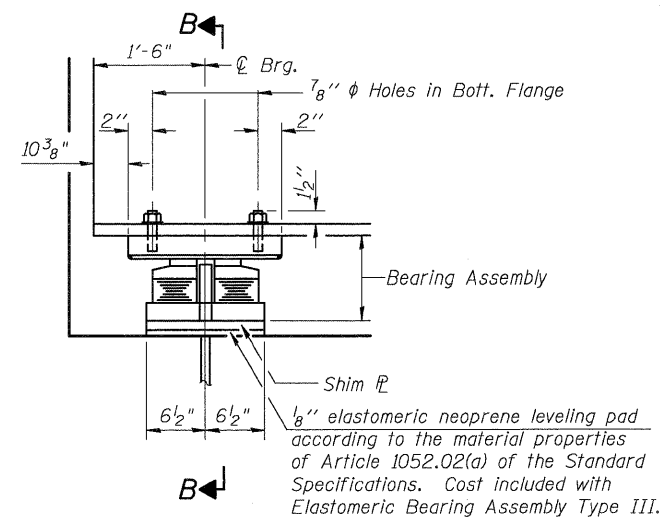


ELEVATION AT EAST ABUT. WB

TYPE III ELASTOMERIC EXP. BRG.

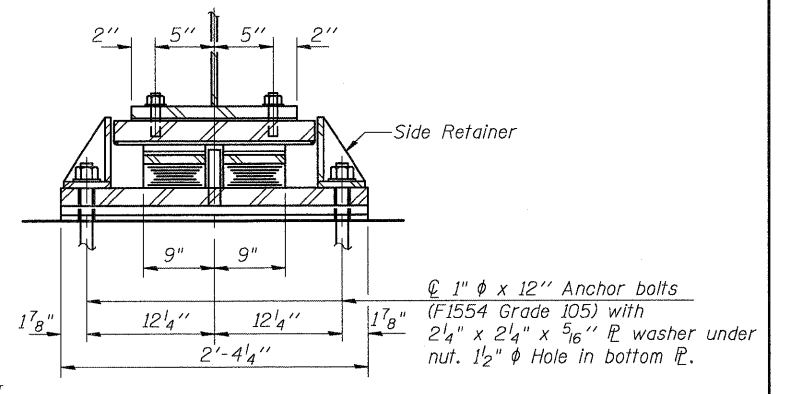


SECTION A-A

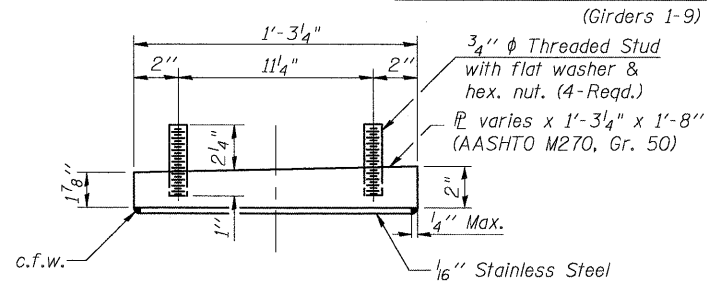


ELEVATION AT EAST ABUT. EB

TYPE III ELASTOMERIC EXP. BRG.

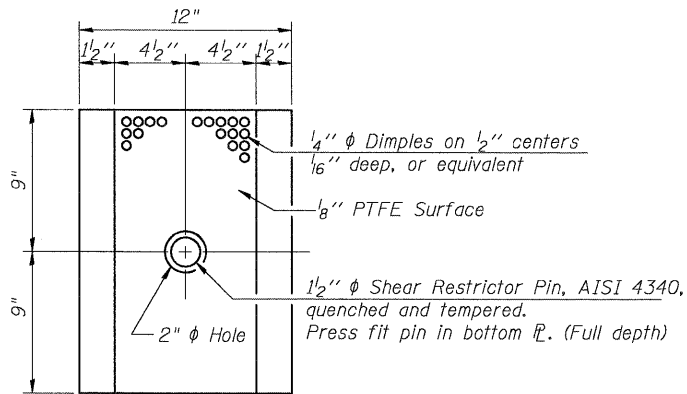


SECTION B-B

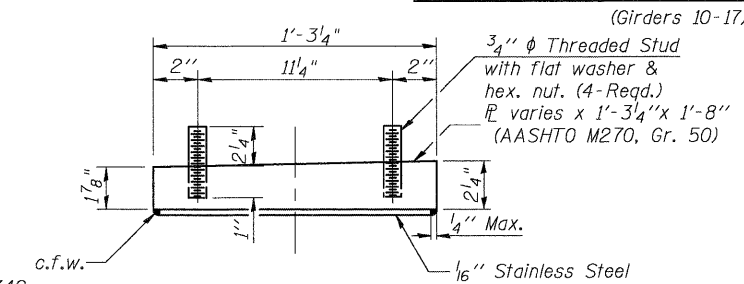


TOP BEARING ASSEMBLY WB

(Looking South)

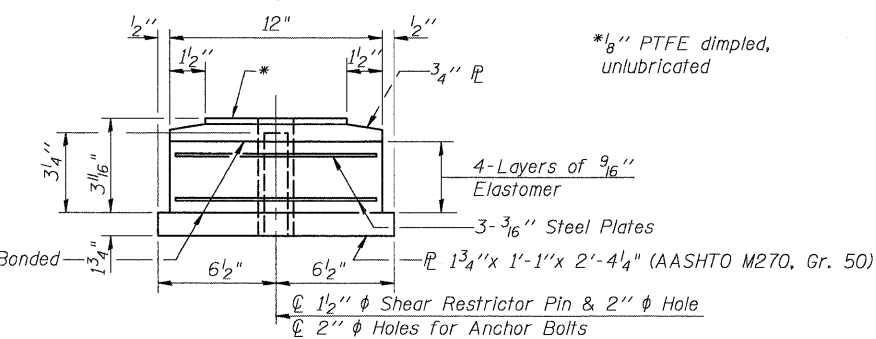


PLAN-PTFE ELASTOMERIC BRG.



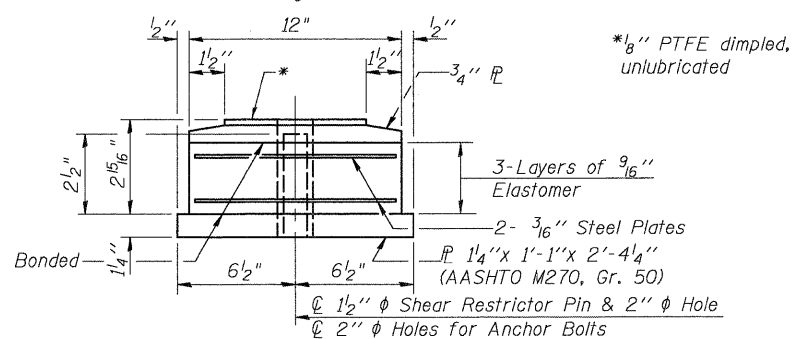
TOP BEARING ASSEMBLY EB

(Looking South)



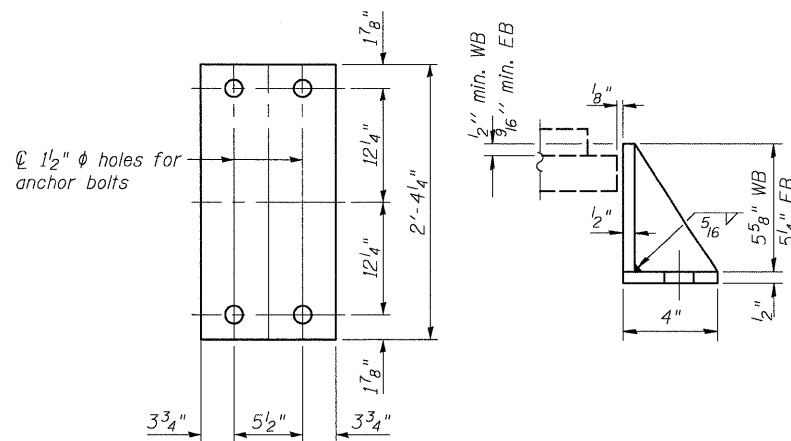
BOTTOM BEARING ASSEMBLY WB

INTERIOR GIRDER SHOWN. SEE DETAIL FOR EXTERIOR GIRDERS



BOTTOM BEARING ASSEMBLY EB

INTERIOR GIRDER SHOWN. SEE DETAIL FOR EXTERIOR GIRDERS

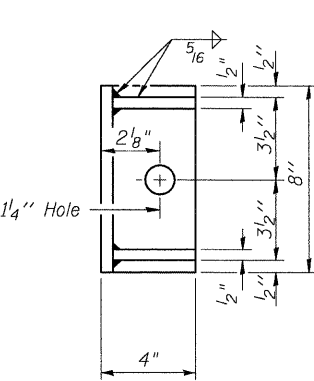


DETAIL SHOWING BOTTOM PLATE

AT EXTERIOR GIRDERS

I-2E-3 10-1-08

SECTION THRU PTFE

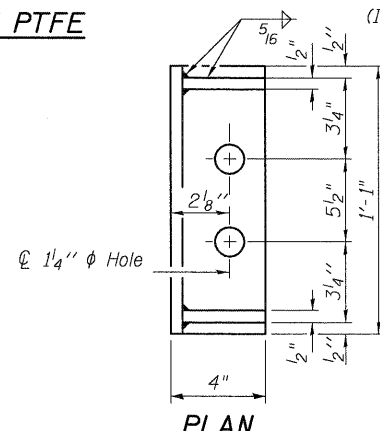


PLAN

(Interior Girders) (26 req'd.)

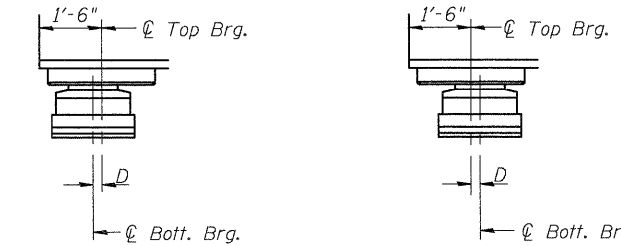
SIDE RETAINER

Equivalent rolled angle with stiffeners will be allowed in lieu of welded plates.



PLAN

(Exterior Girders) (8 req'd.)



SETTING ANCHOR BOLTS AT EXP. BRG.

BELOW 50° F. ABOVE 50° F. (Move bottom brg. away from fixed brg.) (Move bottom brg. toward fixed brg.)

SETTING ANCHOR BOLTS AT EXP. BRG.

D=9/16" per each 100' of expansion for every 15° temp. change from the normal temp. of 50° F.

Notes:
Anchor bolts shall be ASTM F1554 all-thread (or an Engineer-approved alternate material) of the grade(s) and diameter(s) specified. ASTM A307 Grade C anchor bolts may be used in lieu of ASTM F1554 Grade 36 (Fy=36ksi). The corresponding specified grade of AASHTO M314 anchor bolts may be used in lieu of ASTM F1554.

Anchor bolts at fixed bearings may be either cast in place or installed in holes drilled after the supported member is in place.

Anchor bolts for Type III bearings shall be placed in holes drilled in the concrete through holes in the bottom bearing plate after members are in place. Side retainers shall be placed after bolts are installed.

Drilled and set anchor bolts shall be installed according to Article 521.06 of the Standard Specifications.

Side retainers and other steel members required for the bearing assembly shall be included in the cost of Elastomeric Bearing Assembly, Type III.

The 1/8" PTFE sheet shall be bonded directly to the top steel plate with a two-component, medium viscosity epoxy resin, conforming to the requirements of the Federal Specification MMM-A-134, Type I. The bond agent shall be applied on the full area of the contact surfaces.

Bonding of 1/8" PTFE sheet during vulcanizing process will be permitted provided the process and method of adjusting assembly height is approved by the Engineer.

Two 1/8 in. adjusting shims shall be provided for each bearing in addition to all other plates or shims and placed as shown on bearing details.

BILL OF MATERIAL

Item	Unit	Total
Elastomeric Bearing Assembly Type III	Each	17
Anchor Bolts, 1"	Each	42

BEARING DETAILS
STRUCTURE NO. 082-0162(E.B.)
STRUCTURE NO. 082-0163 (W.B.)

COOMBE-BLOXDORF P.C. Engineers / Land Surveyors Springfield, Illinois Design Firm License No. 184-002703	PROJECT NO. 07004	SHEET NO. 36	F.A.I. RTE.	SECTION	COUNTY	TOTAL SHEETS	SHEET NO.
	SCALE		64	82-2VB	ST. CLAIR	153	91
	DATE 5/12/09	59 SHEETS	CONTRACT NO. 76867				
	DRAWN BY TFC CHECKED BY RM/MCB		FED. ROAD DIST. NO. 7 ILLINOIS FED. AID PROJECT				