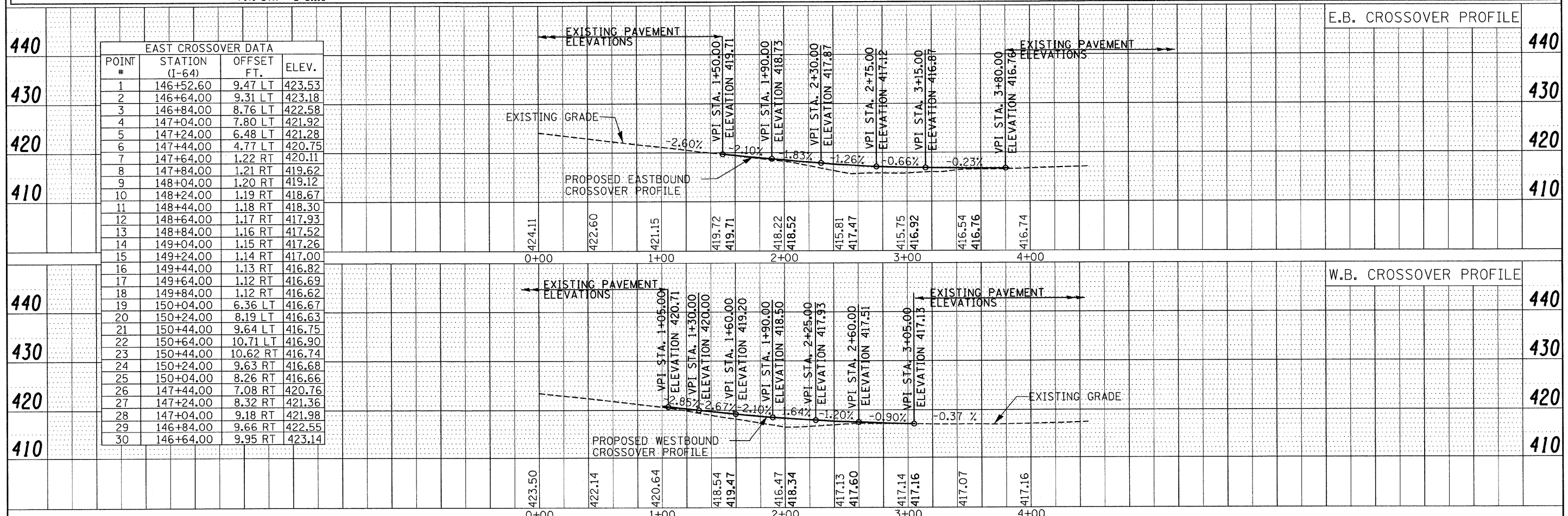
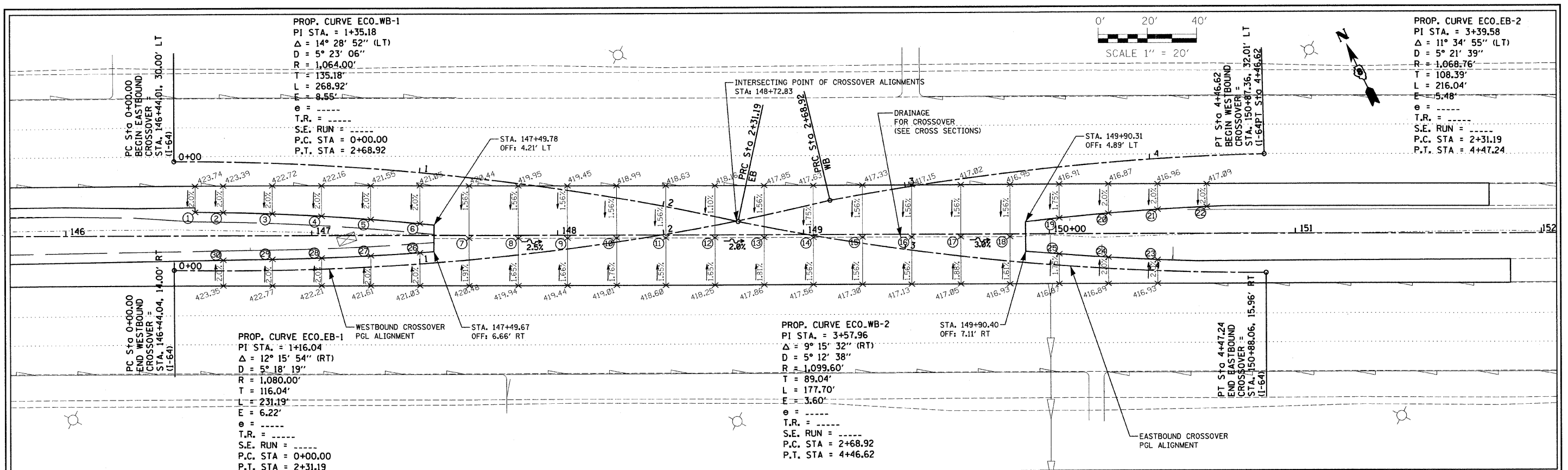


DATE: \_\_\_\_\_ BY: \_\_\_\_\_  
 SURVEYED: \_\_\_\_\_  
 PLOTTED: \_\_\_\_\_  
 CHECKED: \_\_\_\_\_  
 RT. OF WAY CHECKED: \_\_\_\_\_  
 NO. \_\_\_\_\_  
 CADD FILE NAME: \_\_\_\_\_

DATE: \_\_\_\_\_ BY: \_\_\_\_\_  
 SURVEYED: \_\_\_\_\_  
 PLOTTED: \_\_\_\_\_  
 CHECKED: \_\_\_\_\_  
 RT. OF WAY CHECKED: \_\_\_\_\_  
 NO. \_\_\_\_\_  
 CADD FILE NAME: \_\_\_\_\_



EAST CROSSOVER DATA			
POINT #	STATION (I-64)	OFFSET FT.	ELEV.
1	146+52.60	9.47 LT	423.53
2	146+64.00	8.31 LT	423.18
3	146+84.00	7.76 LT	422.58
4	147+04.00	7.80 LT	421.92
5	147+24.00	6.48 LT	421.28
6	147+44.00	4.77 LT	420.75
7	147+64.00	1.22 RT	420.11
8	147+84.00	1.21 RT	419.62
9	148+04.00	1.20 RT	419.12
10	148+24.00	1.19 RT	418.67
11	148+44.00	1.18 RT	418.30
12	148+64.00	1.17 RT	417.93
13	148+84.00	1.16 RT	417.52
14	149+04.00	1.15 RT	417.26
15	149+24.00	1.14 RT	417.00
16	149+44.00	1.13 RT	416.82
17	149+64.00	1.12 RT	416.69
18	149+84.00	1.12 RT	416.62
19	150+04.00	6.36 LT	416.67
20	150+24.00	8.19 LT	416.63
21	150+44.00	9.64 LT	416.75
22	150+64.00	10.71 LT	416.90
23	150+84.00	10.62 RT	416.74
24	150+24.00	9.63 RT	416.68
25	150+04.00	8.26 RT	416.66
26	147+44.00	7.08 RT	420.76
27	147+24.00	8.32 RT	421.36
28	147+04.00	9.18 RT	421.98
29	146+84.00	9.66 RT	422.55
30	146+64.00	9.95 RT	423.14