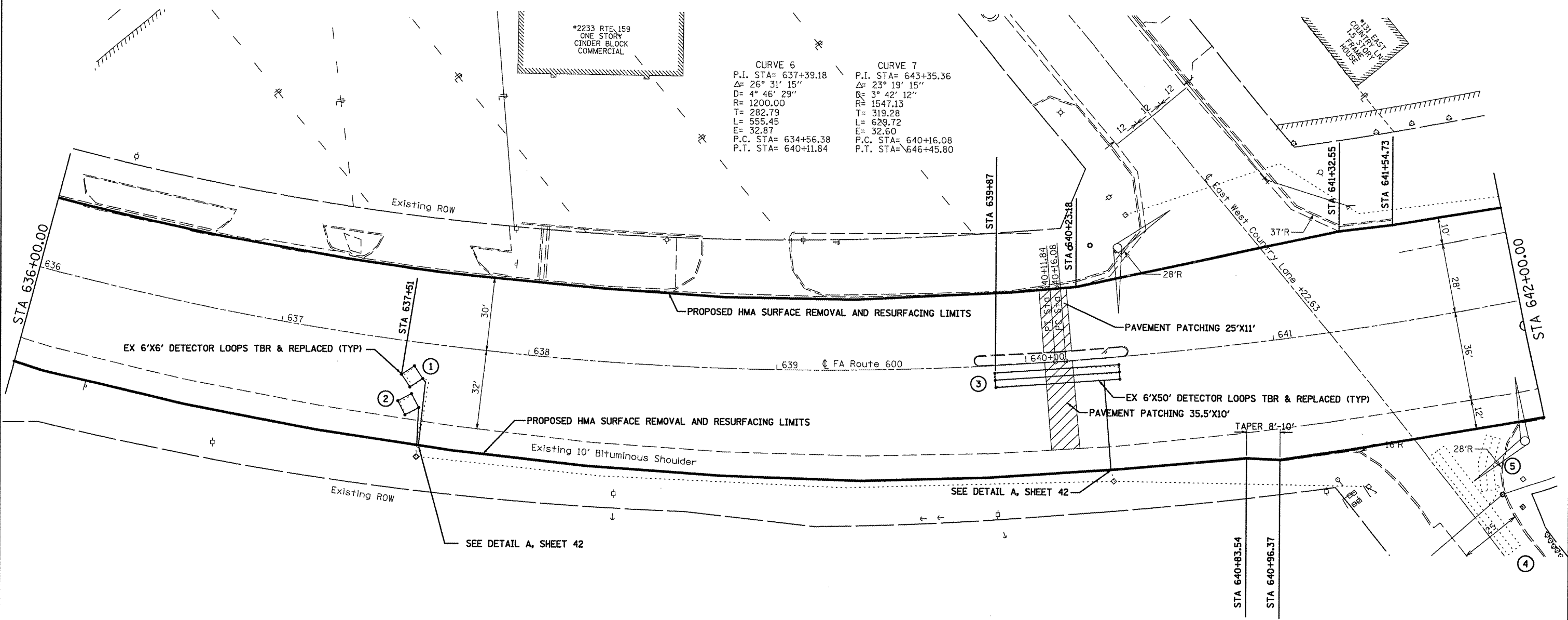


CURVE 6
 P.I. STA= 637+39.18
 Δ = 26° 31' 15"
 D= 4° 46' 29"
 R= 1200.00
 T= 282.79
 L= 555.45
 E= 32.87
 P.C. STA= 634+56.38
 P.T. STA= 640+11.84

CURVE 7
 P.I. STA= 643+35.36
 Δ = 23° 19' 15"
 D= 3° 42' 12"
 R= 1547.13
 T= 319.28
 L= 629.72
 E= 32.60
 P.C. STA= 640+16.08
 P.T. STA= 646+45.80



FILE NAME =	USER NAME = #USER#	DESIGNED - AAB	REVISED -
#FILE#		DRAWN - MNR	REVISED -
		CHECKED - AAA	REVISED -
		DATE - MAY 12, 2009	REVISED -

**STATE OF ILLINOIS
 DEPARTMENT OF TRANSPORTATION**

PLAN VIEW SHEETS

SCALE: 1" = 20' SHEET NO. 10 OF 16 SHEETS STA. 636+00.00 TO STA. 642+00.00

F.A. RTE.	SECTION	COUNTY	TOTAL SHEETS	SHEET NO.
600	60-(30,31,128)-2	MADISON	42	17
CONTRACT NO. 76B87			ILLINOIS FED. AID PROJECT	