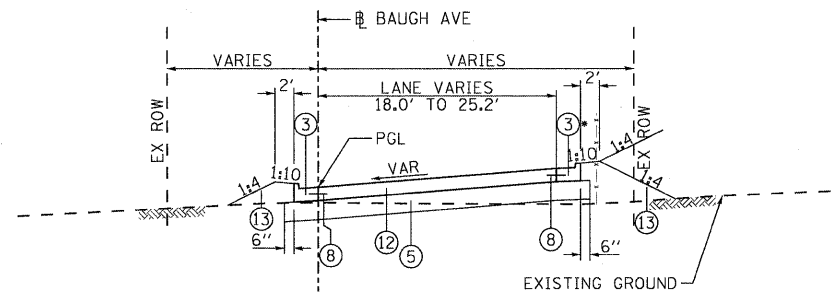
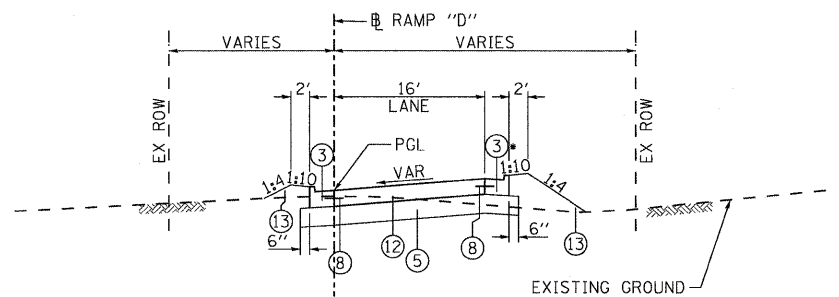


EXISTING BAUGH AVENUE



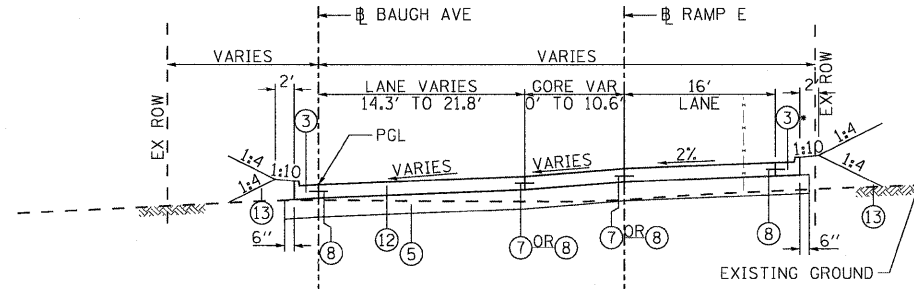
PROPOSED BAUGH AVENUE

STA 11+11.28 TO 11+65.98
 STA 12+54.64 TO STA 13+47.59
 • REVERSE GUTTER PAN SLOPE
 TO MATCH ADJACENT ROADWAY SLOPE



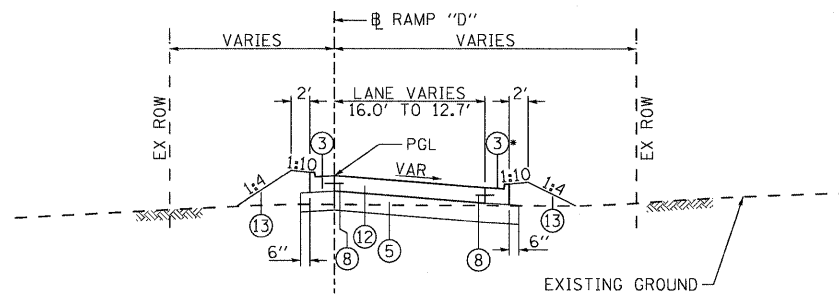
PROPOSED RAMP "D"

STA 400+00.00 TO STA 401+52.52
 • REVERSE GUTTER PAN SLOPE TO
 MATCH ADJACENT ROADWAY SLOPE
 STA 400+00 RT TO 400+95 RT



PROPOSED BAUGH AVENUE

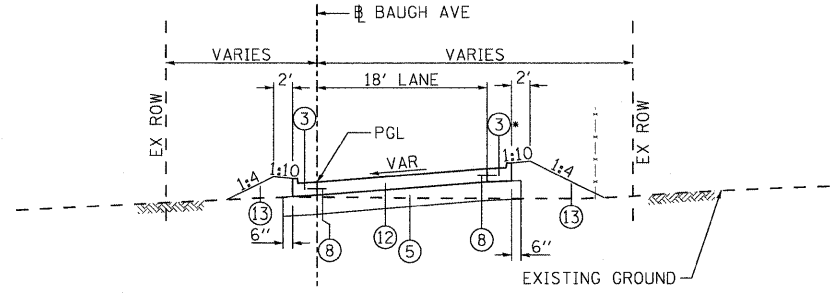
STA 11+65.98 TO 12+54.64
 • REVERSE GUTTER PAN SLOPE
 TO MATCH ADJACENT ROADWAY SLOPE



PROPOSED RAMP "D"

STA 401+52.52 TO STA 403+60.00
 • COMBINATION CONCRETE CURB AND GUTTER TYPE B-6.24
 ENDS AT STA 403+18.50. COMBINATION CONCRETE CURB
 AND GUTTER B-6.12 BEGINS AT STA 403+18.50.
 TRANSITION CURB AND GUTTER PAID FOR AS TYPE B-6.24.

SUPERELEVATION DATA	
SLOPE	STATION
TRANS. (1.2% LT TO 2% LT)	400+27.22 TO 400+61.81
FULL SUPER (2% LT)	400+61.81 TO 401+02.52
TRANS. (2% LT TO 0%)	401+02.52 TO 401+52.52
TRANS. (0% TO 2% RT)	401+52.52 TO 402+02.52
FULL SUPER (2% RT)	402+02.52 TO 403+52.41



PROPOSED BAUGH AVENUE

STA 13+47.59 TO STA 15+00.00
 • REVERSE GUTTER PAN SLOPE
 TO MATCH ADJACENT ROADWAY SLOPE

SUPERELEVATION DATA	
SLOPE	STATION
FULL SUPER (2% LT)	11+31.28 TO 11+65.98
TRANS. (2% LT TO 3% LT)	11+65.98 TO 12+00.00
FULL SUPER (3% LT)	12+00.00 TO 12+27.31
TRANS. (3% LT TO 2% LT)	12+27.31 TO 12+54.64
FULL SUPER (2% LT)	12+54.64 TO 14+48.57
TRANS. (2% LT TO 1% LT)	14+48.57 TO 14+90.95

EXISTING LEGEND:

- (A) PORTLAND CEMENT CONCRETE SIDEWALK - 4"±
- (B) SUB-BASE GRANULAR MATERIAL, TYPE A - 4"±
- (C) PORTLAND CEMENT CONCRETE PAVEMENT - 10"±
- (D) CONCRETE CURB
- (E) HMA SURFACE COURSE - 1"±
- (F) HMA BINDER COURSE - 1"±
- (G) COMBINATION CURB AND GUTTER TYPE B-6.24
- (H) CONCRETE MEDIAN SURFACE
- (I) COARSE AGGREGATE
- (J) PORTLAND CEMENT CONCRETE JOINTS
- (K) COMBINATION CURB AND GUTTER TYPE B-6.12

PROPOSED LEGEND:

- (1) HMA SURFACE COURSE, MIX "D" N70 - 1 1/4"
- (2) HMA LEVELING BINDER, (MACHINE METHOD) N70 - 1" MINIMUM AND VARIES
- (3) COMBINATION CONCRETE CURB AND GUTTER TYPE B-6.24
- (4) CONCRETE CURB TYPE B-6.12
- (5) AGGREGATE BASE COURSE, TYPE A - 12"
- (6) PORTLAND CEMENT CONCRETE BASE COURSE - 10"
- (7) #6 TIE BARS, 30" LONG AT 30" C-C
(INCLUDED IN BID PRICE FOR VARIOUS PCC ITEMS)
- (8) #6 TIE BARS, 30" LONG AT 24" C-C
(INCLUDED IN BID PRICE FOR VARIOUS PCC ITEMS)
- (9) COARSE AGGREGATE
- (10) CONCRETE MEDIAN SURFACE - 4"
- (11) LONGITUDINAL JOINT
- (12) PORTLAND CEMENT CONCRETE PAVEMENT - 10" (JOINTED)
- (13) SEEDING AND MULCHING (SEE NOTE 1)
- (14) PORTLAND CEMENT CONCRETE SIDEWALK - 4"
- (15) HMA SURFACE REMOVAL - VARIABLE DEPTH
- (16) BITUMINOUS MATERIALS (PRIME COAT)
- (17) AGGREGATE (PRIME COAT)

NOTES:

1. SEEDING, CLASS 1B AND MULCH, METHOD 2 SHALL BE USED ON ALL SIDE SLOPES.
2. FOR LIMITS OF CHAIN LINK FENCE, SEE PLAN AND PROFILE SHEETS. LOCATE FENCE POSTS TO AVOID ALL EXISTING UTILITIES.
3. SEE LANDSCAPING PLAN SHEETS FOR MEDIAN PLANTING DETAILS FOR STA. 202+88.20 TO STA. 204+80.77.

STATE OF ILLINOIS
 DEPARTMENT OF TRANSPORTATION

TYPICAL SECTIONS
 BAUGH AVENUE & RAMP "D"

F.A.U. RTE.	SECTION	COUNTY	TOTAL SHEETS	SHEET NO.
9166/9180	82-1-10N	ST. CLAIR	68	8
FED. ROAD DIST. NO.		ILLINOIS FED. AID PROJECT		

SCALE: NONE SHEET NO. 2 OF 4 SHEETS STA. ----- TO STA. -----

FILE NAME = DBTRI-76C38-sht-typical101-04.dgn
 USER NAME = jdf
 MODEL NAME = DBTRI-76C38-SHT-TYPICAL-02
 PLOT SCALE = 1:10
 PLOT DATE = 8/13/2009

DESIGNED - LDC
 DRAWN - JDF
 CHECKED - GEB
 DATE - 08/14/09

REVISED -
 REVISED -
 REVISED -
 REVISED -

8/13/2009 1:01:35:54 AM

P:\08-0030 CTE TRILEVEL\900_CAD\901_DRAWINGS\04_CONTRACT\SHEET\CVL\GENERAL\DBTRI-76C38-SHT-TYPICAL101-04.DGN