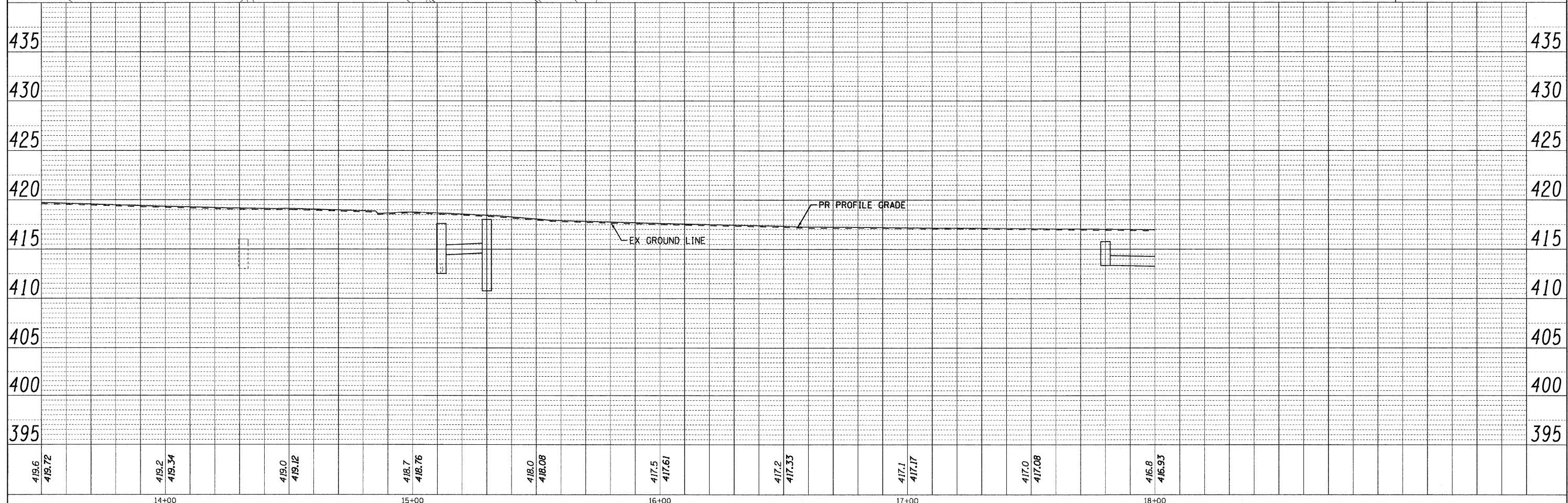
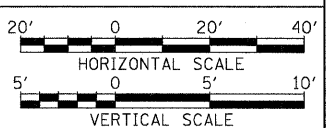
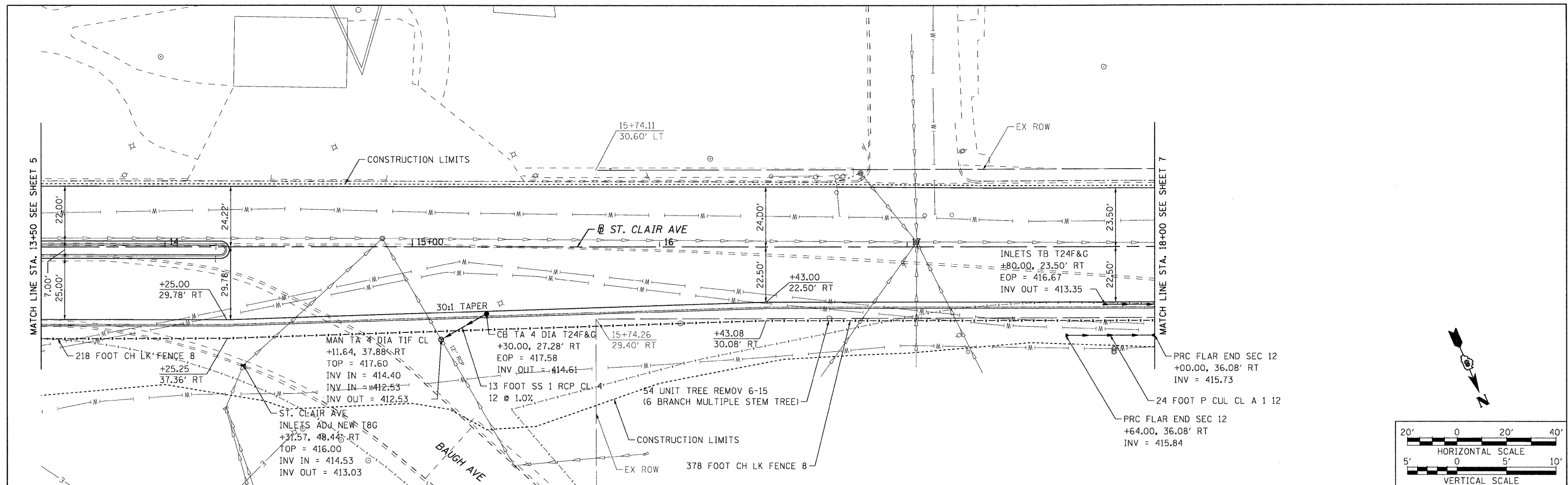


PLAN SURVEYED BY DATE
 PLOTTED BY
 CHECKED BY
 RT. OF WAY CHECKED BY
 NO. CAD FILE NAME

PROFILE SURVEYED BY DATE
 PLOTTED BY
 CHECKED BY
 RT. OF WAY CHECKED BY
 NO. STRUCTURE NOTATIONS CIVAD



FILE NAME = DBTRI-76C38-sht-plnpro-01-08.dgn	USER NAME = jdf	DESIGNED - LDC	REVISED -	STATE OF ILLINOIS DEPARTMENT OF TRANSPORTATION	PLAN AND PROFILE	F.A.U. RTE. = 9166/9180	SECTION = 82-1-10N	COUNTY = ST. CLAIR	TOTAL SHEETS = 68	SHEET NO. = 25
PLOT SCALE = 1:20	CHECKED - GEB	REVISED -	SCALE: 1"=20'			SHEET NO. 6 OF 8 SHEETS	STA. 13+50.00 TO STA. 18+00.00	FED. ROAD DIST. NO. = ILLINOIS FED. AID PROJECT	CONTRACT NO. = 76C38	
PLOT DATE = 8/13/2009	DATE = 08/14/09	REVISED -								

8/13/2009 10:37:55 AM P:\08-0030 CTE TRI LEVEL 900 CAD\901 DRAWINGS\04 CONTRACT\SHEET\CI\ROADWAY\PLANS\DBTRI-76C38-SHT-PLNPRO-01-08.DGN