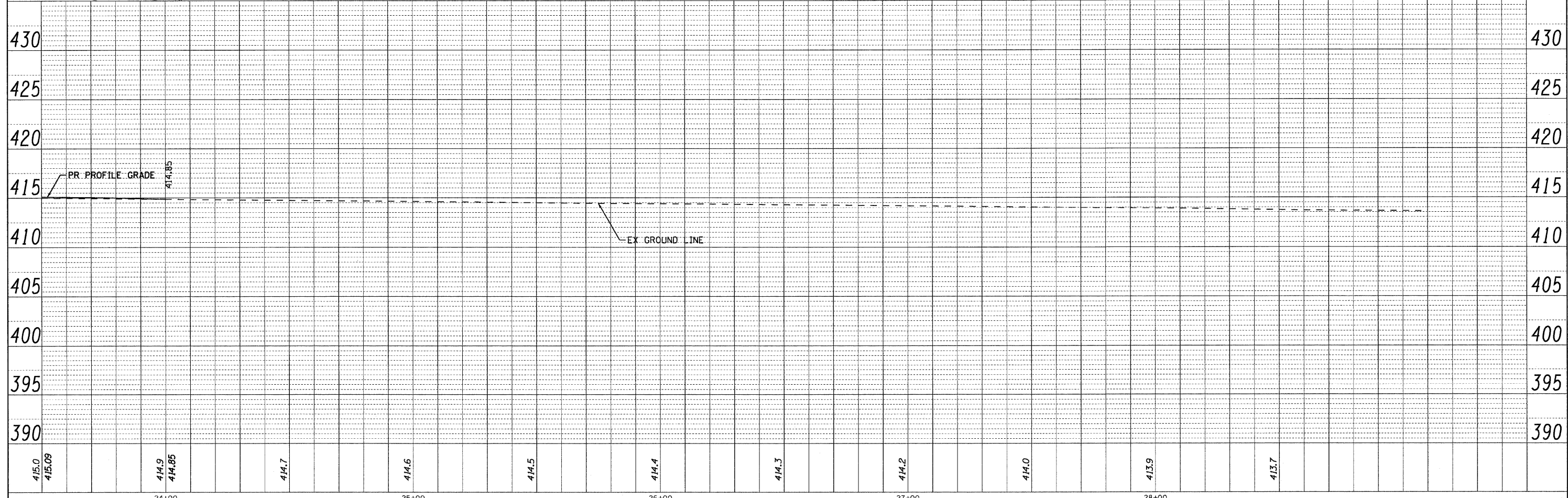
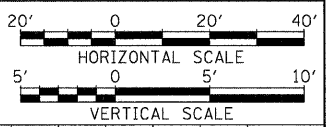
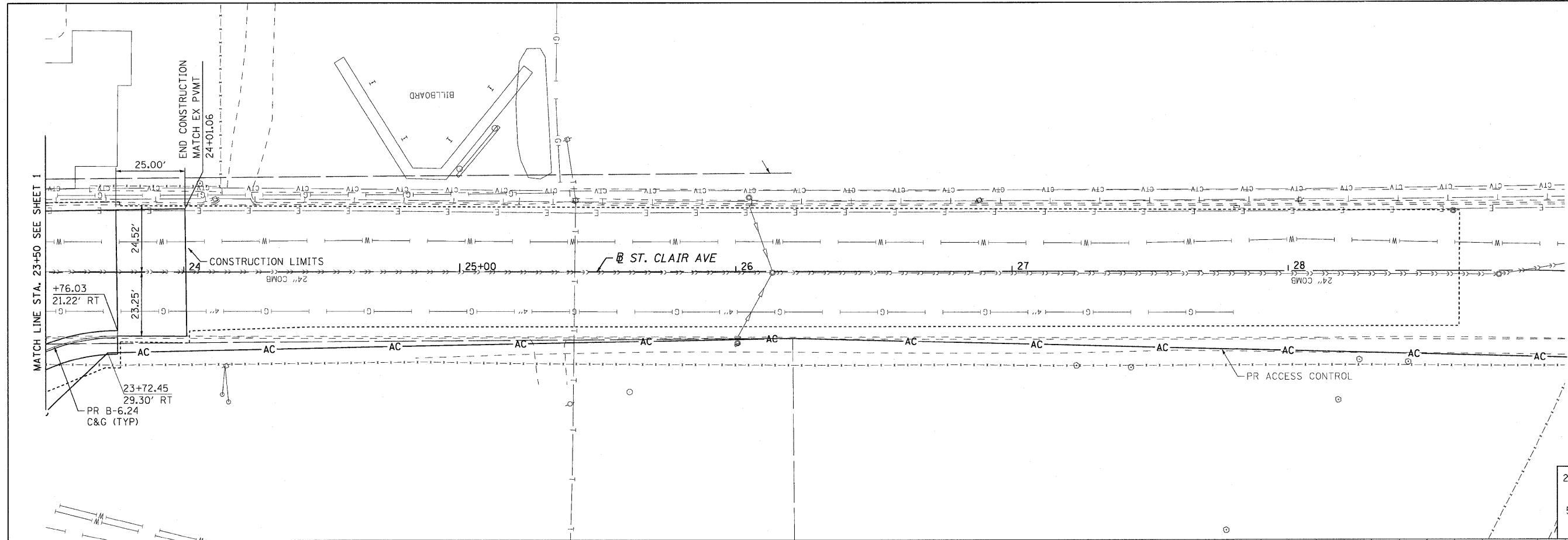


PLAN SURVEYED, PLOTTED, CHECKED, PRINTED, FILED, DATE, BY, NOTE BOOK NO., OF WAY CHECKED, CADD FILE NAME

PROFILE SURVEYED, PLOTTED, CHECKED, PRINTED, FILED, DATE, BY, NOTE BOOK NO., STRUCTURE NOTATIONS CHK'D



FILE NAME = DBTRI-76C38-sht-plnpro-01-08.dgn	USER NAME = jdf	DESIGNED - LDC	REVISED -	<p align="center"><b>STATE OF ILLINOIS</b> <b>DEPARTMENT OF TRANSPORTATION</b></p> <p align="center"><b>PLAN AND PROFILE</b></p>	F.A.U. RTE. = 82-1-10N	COUNTY = ST. CLAIR	TOTAL SHEETS = 68	SHEET NO. = 27
MODEL NAME = DBTRI-76C38-sht-plnpro-08	DRAWN - JDF	CHECKED - GEB	REVISED -		9166/9180	CONTRACT NO. 76C38		
PLOT SCALE = 1:20	CHECKED - GEB	DATE - 08/14/09	REVISED -		FED. ROAD DIST. NO. ILLINOIS FED. AID PROJECT			
PLOT DATE = 8/13/2009	DATE - 08/14/09	REVISED -	SCALE: 1"=20'		SHEET NO. 8 OF 8 SHEETS		STA. 23+50.00 TO STA. 28+61.00	

P:\08-0030 CTE TRILEVEL\00 CAD\901 DRAWINGS\04 CONTRACT\SHEET\CI VLL ROADWAY PLANS\DBTRI-76C38-SHT-PLNPRO-01-08.DGN