

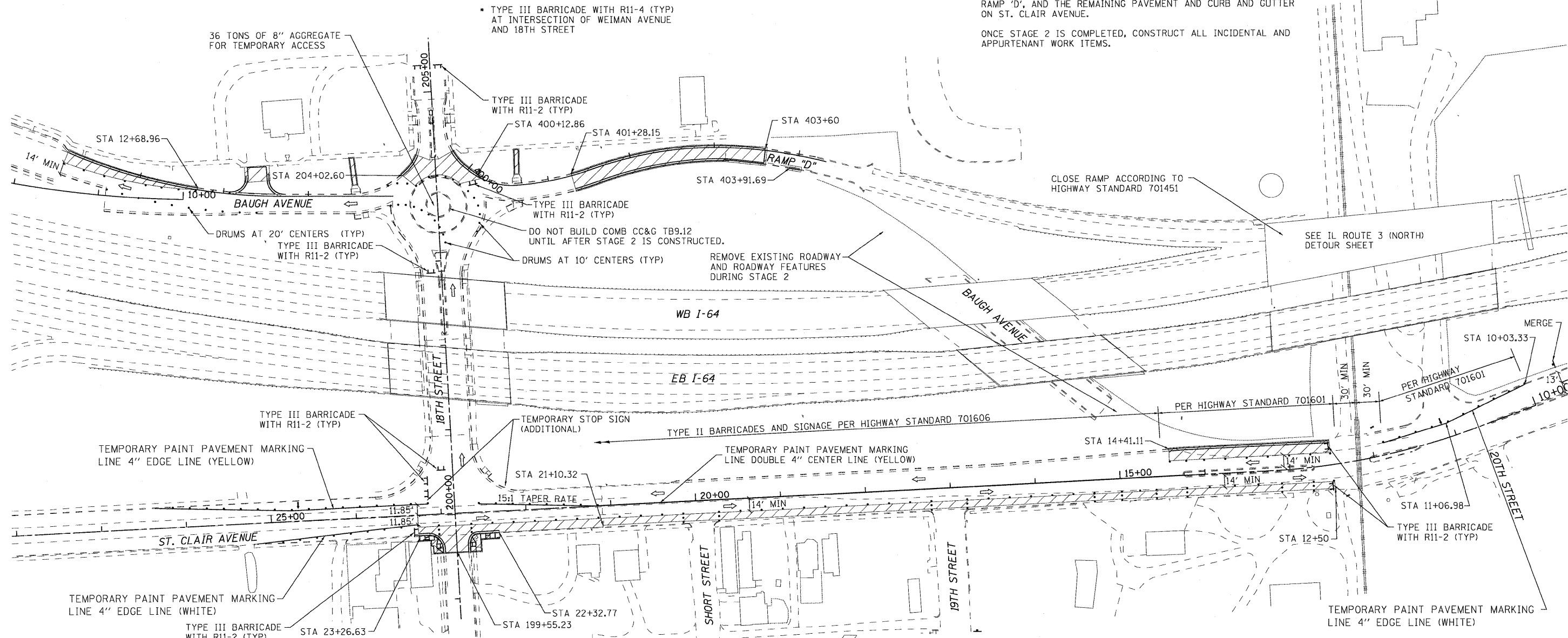
STAGE 2

OPEN ST. CLAIR AVENUE TO TWO WAY TRAFFIC FROM THE RAILROAD TO 18TH STREET. ERECT ALL WAY STOP AT 18TH STREET AND ST. CLAIR AVENUE. CLOSE RAMP 'D' AND CLOSE NORTHBOUND 18TH STREET AT BAUGH AVENUE AND SOUTHBOUND 18TH STREET FROM BAUGH AVENUE TO ST. CLAIR AVENUE.

RAMP 'D' SHALL NOT BE CLOSED FOR MORE THAN 15 CALENDAR DAYS.

CONSTRUCT THE REMAINING PORTIONS OF THE ROUNDABOUT, RAMP 'D', AND THE REMAINING PAVEMENT AND CURB AND GUTTER ON ST. CLAIR AVENUE.

ONCE STAGE 2 IS COMPLETED, CONSTRUCT ALL INCIDENTAL AND APPURTENANT WORK ITEMS.

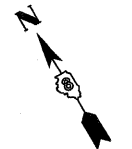


NOTES:

- TYPE III BARRICADES AND ROAD CLOSURE SIGNS SHALL BE POSITIONED AS SHOWN, ACCORDING TO HIGHWAY STANDARD 701901 AND AS DIRECTED BY THE ENGINEER.
- TYPE A LOW INTENSITY FLASHING WARNING LIGHTS SHALL BE USED ON EACH SIGN IN ADVANCE OF THE WORK DURING HOURS OF DARKNESS.
- ALL WARNING SIGNS SHALL BE A MINIMUM OF 48" x 48" AND HAVE A BLACK LEGEND AND BORDER ON A FLUORESCENT ORANGE REFLECTORIZED BACKGROUND.
- THE CONTRACTOR SHALL MAINTAIN ACCESS TO ENTRANCES AT ALL TIMES.
- LONGITUDINAL DISTANCES MAY BE ADJUSTED TO FIT FIELD CONDITION.
- ALL TYPE III BARRICADES UTILIZED FOR ROAD CLOSURES SHALL HAVE TWO LOW INTENSITY FLASHING LIGHTS MOUNTED ON TOP OF EACH BARRICADE.
- EXACT LOCATION OF ALL WARNING SIGNS AND BARRICADES SHALL BE STAKED IN THE FIELD FOR APPROVAL BY THE ENGINEER PRIOR TO INSTALLATION.
- ALL BUSINESSES AND RESIDENTS FRONTING THE PROJECT SHALL BE NOTIFIED AT LEAST 48 HOURS PRIOR TO ROAD CLOSURES AFFECTING THEIR ACCESS.
- TYPE III BARRICADES SHOWN FOR LOCATION ONLY. LOCATION AND NUMBER REQUIRED TO BE DETERMINED BY ENGINEER IN THE FIELD.
- REMOVE ALL PAVEMENT MARKINGS THAT CONFLICT WITH THE TRAFFIC CONTROL PAVEMENT MARKINGS.

LEGEND

- SIGN
- ARROW BOARD
- TYPE III BARRICADE
- TYPE II BARRICADE OR DRUM
- DIRECTIONAL ARROW (FOR INFORMATION ONLY. DO NOT PAINT ON ROADWAY.)
- ROAD CLOSED
- ROAD CLOSED TO THRU TRAFFIC
- WORK ASSOCIATED WITH THIS STAGE



FILE NAME = DBTRI-76C38-sh2-staging-01-03.dgn USER NAME = jdf MODEL NAME = DBTRI-76C38-sh2-staging-03 DRAWN - MBB CHECKED - GEB DATE - 08/14/09 DESIGNED - LDT REVISED - REVISIONS:	STATE OF ILLINOIS DEPARTMENT OF TRANSPORTATION		SUGGESTED STAGES OF CONSTRUCTION AND TRAFFIC CONTROL - STAGE 2		F.A.U. RTE. 82-1-10N COUNTY ST. CLAIR TOTAL SHEETS 68 SHEET NO. 31
	PLOT SCALE = 1:60 PLOT DATE = 8/13/2009 SCALE: 1"=60' SHEET NO. 3 OF 3 SHEETS STA. TO STA.	CONTRACT NO. 76C38		FED. ROAD DIST. NO. ILLINOIS FED. AID PROJECT	

8/13/2009 10:41:23 AM

P:\08-0030 CTE TRI LEVEL 900 CAD\901 DRAWINGS\04 CONTRACT\SHEET\CVL\MDT\DBTRI-76C38-SH2-STAGING-01-03.DGN