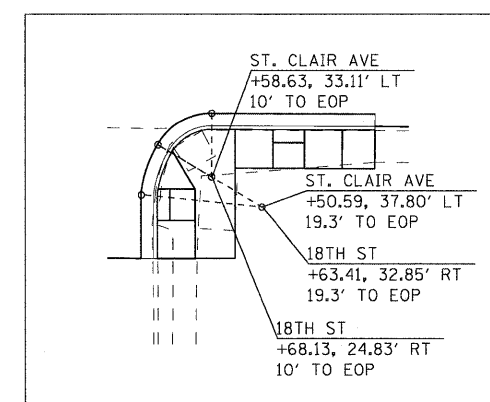
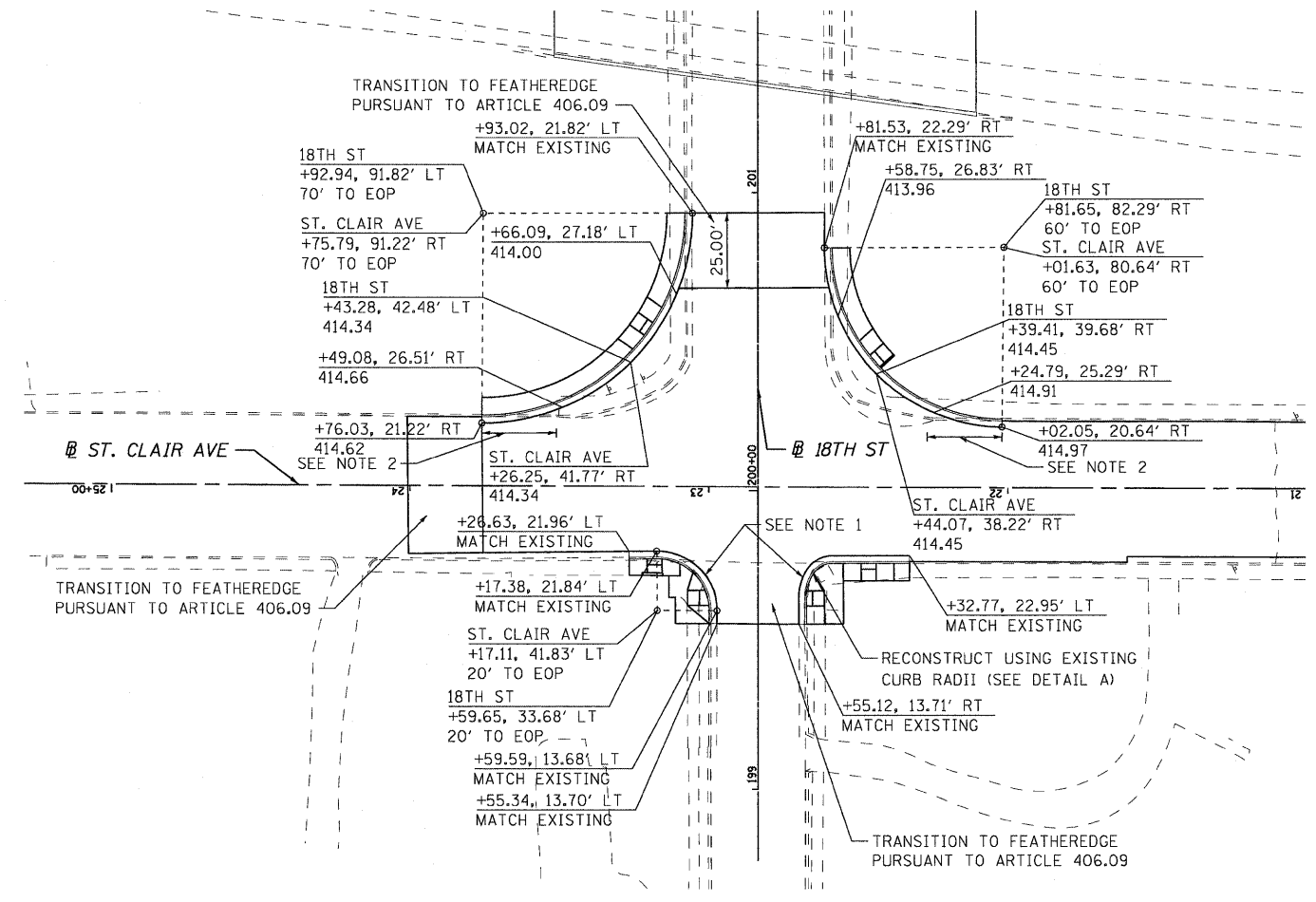


NOTE:

1. CONTRACTOR SHALL ENSURE PROPOSED CURB AND GUTTER DRAINS
2. TRANSITION MILLING AT EDGE OF PAVEMENT FROM 1 1/4" TO 0" OVER 25'. MAINTAIN 1 1/4" RESURFACING THICKNESS THROUGH INTERSECTION.



DETAIL A
SCALE 1"=10'

| | | | | | | | | | |
|---|-----------------|----------|---|---------------------------------|--|--------------------|--------------------|-------------------|----------------|
| 8/13/2009 1:06:35:01 AM FILE NAME = DBTRI-76C38-sht-intersect-01-06.dgn USER NAME = jdf MODEL NAME = DBTRI-76C38-sht-intersect-01 PLOT SCALE = 1:30 PLOT DATE = 8/13/2009 | DESIGNED - LDT | REVISD - | STATE OF ILLINOIS DEPARTMENT OF TRANSPORTATION | INTERSECTION DETAIL PLAN | F.A.U. RTE. = | SECTION = 82-1-10N | COUNTY = ST. CLAIR | TOTAL SHEETS = 68 | SHEET NO. = 33 |
| | DRAWN - SMS | REVISD - | | | 9166/9180 | CONTRACT NO. 76C38 | | | |
| | CHECKED - GEB | REVISD - | | | FED. ROAD DIST. NO. [ILLINOIS] FED. AID PROJECT | | | | |
| | DATE - 08/14/09 | REVISD - | | | SCALE: 1"=30' SHEET NO. 1 OF 3 SHEETS STA. ----- TO STA. ----- | | | | |