

STATE OF ILLINOIS
DEPARTMENT OF TRANSPORTATION
DIVISION OF HIGHWAYS

**PROPOSED
HIGHWAY PLANS**

FAP ROUTE 998 (I-70)
SECTION 82-1DM-1

ST. CLAIR COUNTY
C-98-053-09

**PROPOSED I-70 CORRIDOR
FROM CAHOKIA CANAL R.O.W. TO PACKERS AVENUE
SITE CLEARING, DEMOLITION AND
UTILITY RELOCATION**

FOR INDEX OF SHEETS, SEE SHEET NO. 2

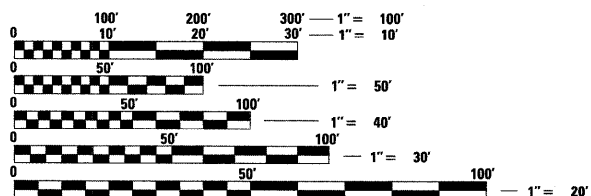
INTERSTATE 70
ADT = 59,940 (2030)
DESIGN SPEED = 60 MPH
POSTED SPEED = 55 MPH

IL ROUTE 3 (ST. CLAIR AVE.)
ADT = 6,400 (2008), 7,900 (2030)
DESIGN SPEED = 40 MPH (S. OF PACKERS AVE.)
DESIGN SPEED = 50 MPH (N. OF PACKERS AVE.)
POSTED SPEED = 35 MPH (S. OF PACKERS AVE.)
POSTED SPEED = 45 MPH (N. OF PACKERS AVE.)

1ST STREET
ADT = 1,350 (2008), 1,700 (2030)
DESIGN SPEED = 35 MPH
POSTED SPEED = 30 MPH

PROJECT LOCATED IN FAIRMONT CITY, ILLINOIS

PLANS 1" = 50'
PROFILES 1" = 5'
X-SECTIONS 1" = 10' H
1" = 5' V

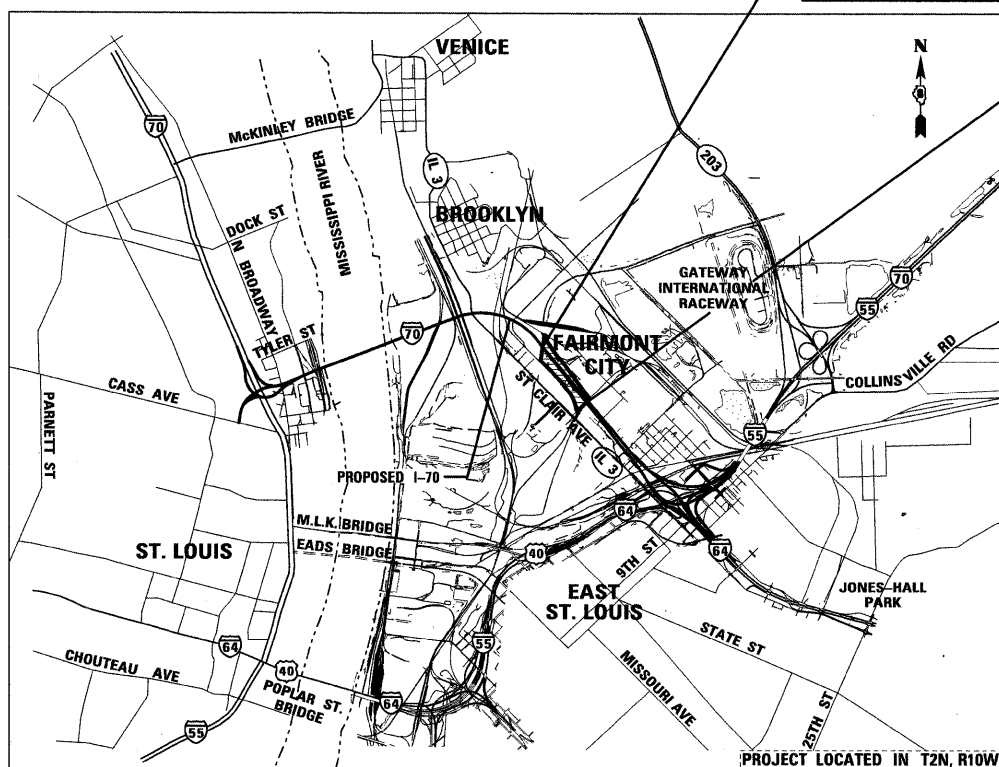


FULL SIZE PLANS HAVE BEEN PREPARED USING STANDARD ENGINEERING SCALES. REDUCED SIZED PLANS WILL NOT CONFORM TO STANDARD SCALES. IN MAKING MEASUREMENTS ON REDUCED PLANS, THE ABOVE SCALES MAY BE USED.

J.U.L.I.E.
JOINT UTILITY LOCATION INFORMATION FOR EXCAVATION
1-800-892-0123
OR 811

PROJECT ENGINEER : MICHAEL D. PRITCHETT (618) 346-3180
PROJECT MANAGER : JANE CHASTAIN MERCER (618) 346-3206

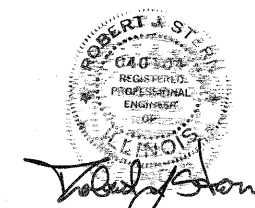
CONTRACT NO. 76C68



GROSS LENGTH OF PROJECT:
2,118.06'
NET LENGTH OF PROJECT:
2,118.06'

BEGIN IMPROVEMENT
CAHOKIA CANAL R.O.W.
STA. 152 + 28.01 (I-70)

END IMPROVEMENT
PACKERS AVENUE
STA. 173 + 46.07 (I-70)



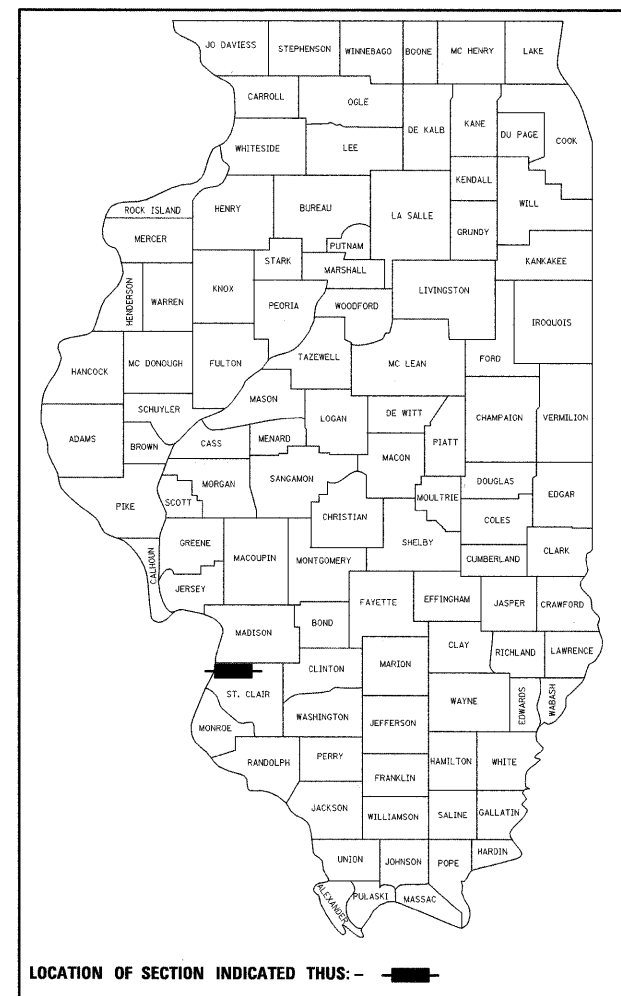
EXPIRES: 11/30/09
DATE: 4/30/09
FOR SHEETS 1 TO 19

TENG

TENG & ASSOCIATES, INC.
ENGINEERS/ARCHITECTS/PLANNERS
205 N. MICHIGAN AVE. CHICAGO, IL 60601
TELEPHONE: 12616-0000

F.A.P. SHEETS	SECTION	COUNTY	TOTAL SHEETS	SHEET NO.
998	82-1DM-1	ST. CLAIR	25	1
FED. ROAD DIST. NO.	ILLINOIS	CONTRACT NO. 76C68		

D-98-053-09



STATE OF ILLINOIS
DEPARTMENT OF TRANSPORTATION
DIVISION OF HIGHWAYS

SUBMITTED May 5, 2009
Deputy Director of Highways, Region Engineer
October 2, 2009
Charles J. Ingersoll, P.E.
ENGINEER OF DESIGN AND ENVIRONMENT
October 2, 2009
Christine M. Reed, P.E.
DIRECTOR OF HIGHWAYS, CHIEF ENGINEER

**PRINTED BY THE AUTHORITY
OF THE STATE OF ILLINOIS**