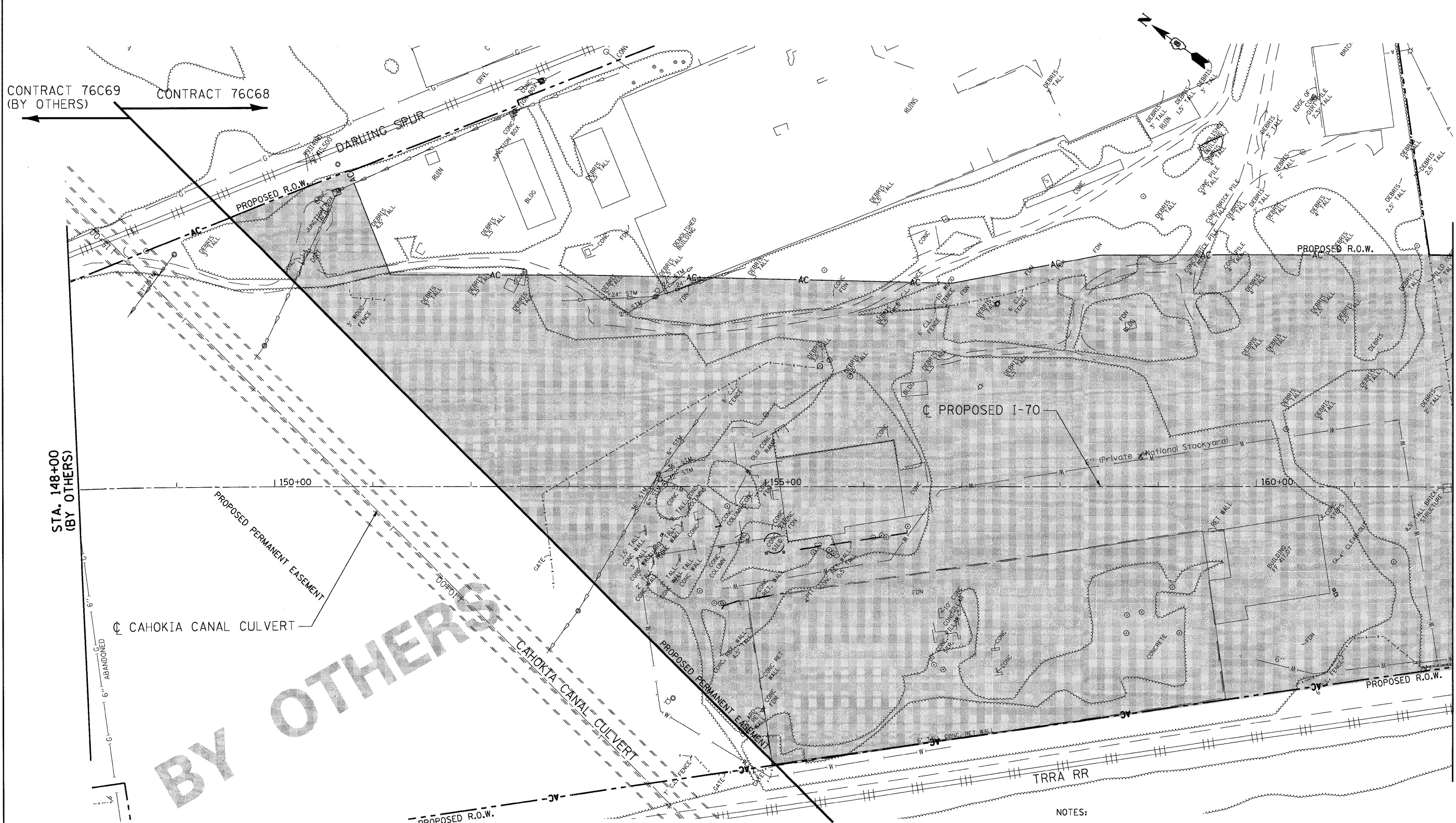


CONTRACT 76C69 (BY OTHERS) ← → CONTRACT 76C68



MATCH LINE STA. 162+00
SEE SHEET 16

MAINTENANCE OF TRAFFIC LEGEND

- WORK ZONE
- EXISTING SIGN
- PROPOSED SIGN
- TRAFFIC CONTROL SIGN W/ STEADY BURNING LIGHT
- TRAFFIC FLOW
- BARRICADE, TYPE III
- BARRICADES, TYPE II W/ FLASHING LIGHTS
- TYPE II BARRICADES OR DRUMS W/ STEADY BURNING LIGHT
- FLAGGERS

NOTES:

1. ALL ROADWAYS AND ALL LANES WITHIN THE PROJECT LIMITS SHALL REMAIN OPEN TO TRAFFIC DURING CONSTRUCTION. THE CONTRACTOR WILL NOT BE ALLOWED TO CLOSE OR REDUCE THE NUMBER OF LANES EXCEPT AS NOTED IN THE PLANS OR AS DIRECTED BY THE ENGINEER.
2. THE CONTRACTOR SHALL PROVIDE ALL SIGNS, BARRICADES, DRUMS AND NECESSARY TRAFFIC CONTROL DEVICES AS SHOWN ON THE PLANS OR AS DIRECTED BY THE ENGINEER. ALL TRAFFIC CONTROL DEVICES SHALL BE INSTALLED TO THE SATISFACTION OF THE ENGINEER PRIOR TO THE START OF CONSTRUCTION ACTIVITIES. THE CONTRACTOR SHALL COORDINATE THE MAINTENANCE OF TRAFFIC WITH THE ADJACENT CONTRACTS (76C39 AND 76C69).

FILE NAME =
\$FILEL\$

USER NAME = #USER#
PLOT SCALE = #SCALE#
PLOT DATE = #DATE#

DESIGNED - JB
DRAWN - JB
CHECKED - ACL
DATE - 08/07/09

REVISED -
REVISED -
REVISED -
REVISED -

**STATE OF ILLINOIS
DEPARTMENT OF TRANSPORTATION**

I-70 CONNECTION

**MAINTENANCE OF TRAFFIC PLAN
STA. 148+00 TO STA. 162+00**

SCALE: 1"=50' SHEET NO. OF SHEETS STA. TO STA.

F.A.P. RTE.	SECTION	COUNTY	TOTAL SHEETS	SHEET NO.
998	82-1DM-1	ST. CLAIR	25	15
CONTRACT NO. 76C68				
FED. ROAD DIST. NO. [ILLINOIS] FED. AID PROJECT				

\DBCCONN-99-MOTIF.LDGN, \DBCCONN-28-BRDRLDGN, \DBCCONN-99-LAYOUT.LDGN, \DBCCONN-28-STAGING.LDGN, \DBCCONN-28-2809, 174214
 \DBCCONN-99-MOTIF.LDGN, \DBCCONN-28-BRDRLDGN, \DBCCONN-99-LAYOUT.LDGN, \DBCCONN-28-STAGING.LDGN, \DBCCONN-28-2809, 174214
 \DBCCONN-99-MOTIF.LDGN, \DBCCONN-28-BRDRLDGN, \DBCCONN-99-LAYOUT.LDGN, \DBCCONN-28-STAGING.LDGN, \DBCCONN-28-2809, 174214
 \DBCCONN-99-MOTIF.LDGN, \DBCCONN-28-BRDRLDGN, \DBCCONN-99-LAYOUT.LDGN, \DBCCONN-28-STAGING.LDGN, \DBCCONN-28-2809, 174214



TENG & ASSOCIATES, INC.
ENGINEERS/ARCHITECTS/PLANNERS
CHICAGO, ILLINOIS